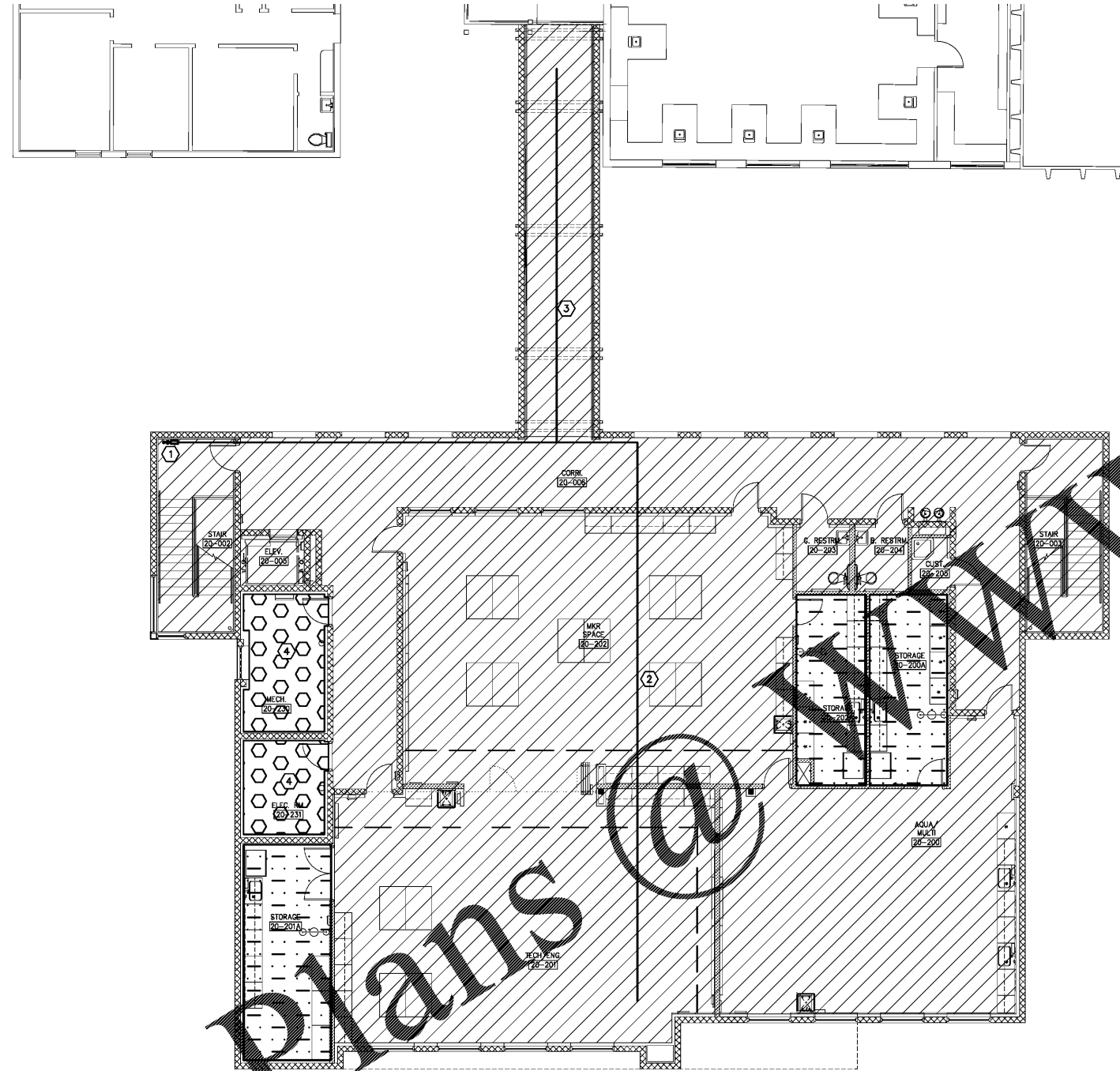


This information is intended for the professional use of the user only. It is not to be used for any other purpose. The user hereby represents and warrants that it will be used in accordance with the intended purpose of the information.



FIRE PROTECTION LEGEND	
PATTERN	DESIGNATION
[Diagonal lines pattern]	THIS AREA SHALL BE DESIGNED TO ORDINARY HAZARD GROUP II, 0.20 GPM/SQ.FT. DENSITY. 250 GPM HOSE.
[Hexagonal pattern]	THIS AREA SHALL BE DESIGNED TO ORDINARY HAZARD GROUP I, 0.15 GPM/SQ.FT. DENSITY. 250 GPM HOSE.
[Horizontal lines pattern]	THIS AREA SHALL BE DESIGNED TO LIGHT HAZARD OCCUPANCY, 0.10 GPM/SQ.FT. DENSITY. 100 GPM HOSE.

SECOND FLOOR SPRINKLER LEGEND						
SYSTEM TYPE	HEAD TYPE	ESTIMATE QUANTITY	ORIFICE AND K-FACTOR	HAZARD CLASSIFICATION	HEAD SPACING	SIN #
WET	SIDEWALL	-	1/2", K = 5.6	LIGHT	225 SQUARE FEET PER HEAD	VK302
WET	SEMI RECESSED PENDANT	36	1/2", K = 5.6	LIGHT	225 SQUARE FEET PER HEAD	VK302
WET	SEMI RECESSED PENDANT	2	1/2", K = 5.6	ORDINARY GROUP 1	130 SQUARE FEET PER HEAD	VK302
WET	UPRIGHT BRASS	2	1/2", K = 5.6	ORDINARY GROUP 1	130 SQUARE FEET PER HEAD	VK302
WET	SEMI RECESSED PENDANT	8	1/2", K = 5.6	ORDINARY GROUP 2	130 SQUARE FEET PER HEAD	VK302

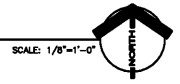
**GENERAL NOTES**

1. THE FIRE PROTECTION CONTRACTOR SHALL COORDINATE THE LOCATION AND ELEVATION OF ALL SPRINKLER PIPING WITH DIVISION 23 AND 26. NO FIRE PROTECTION PIPING SHALL BE INSTALLED WITHOUT COORDINATED SHOP DRAWINGS. CONFLICTS DUE TO INSTALLATION SHALL BE IDENTIFIED AND CORRECTIONS DURING THE SHOP DRAWINGS PROCESS.

**PLAN NOTES**

- 1 FLOOR CONTROL VALVE WITH TAMPER AND FLOW SWITCH AT EACH FLOOR. SEE DETAIL.
- 2 FIRE MAIN ROUTED ABOVE CEILING. COORDINATE WITH DIVISION 23 AND 26 CONTRACTOR.
- 3 FIRE PROTECTION PIPING EXPOSED TO OUTSIDE ELEMENTS SHALL BE GALVANIZED. SPRINKLER HEADS SHALL BE COATED GALVANIZED HEADS.
- 4 UPRIGHT HEADS REQUIRED

1 SECOND FLOOR FIRE PROTECTION PLAN  
FP1.2



Order Plans @ WWW.LDILine.com

**HARVARD • JOLLY ARCHITECTURE**  
2047 VISTA PARKWAY, SUITE 100 | WEST PALM BEACH, FL 33411 | 561-478-4467 | www.harvardjolly.com | AAC000119

**JLD**  
JOHNSON, LEVINSON  
RAGAN, DAVILA, INC.  
CONSTRUCTION DOCUMENTS  
1450 Centrepark Boulevard, Suite 350  
West Palm Beach, Florida 33401  
(561) 689-2303 (561) 689-2302 Fax  
www.jld.com  
Certification Number 6059  
Michael P. Landrum, P.E. 50594  
Charles C. Chalkers, P.E. 51936

**STEM BUILDING  
THE BENJAMIN SCHOOL - LOWER/MIDDLE SCHOOL**  
11000 Ellison Wilson Road, North Palm Beach, FL 33408  
CONSTRUCTION DOCUMENTS

Contract No:	16117.00	
Job No:	117030	
Date:	10-23-17	
Drawn:	BAR	
Revisions		
No.	Date	Note

TO THE BEST OF MY KNOWLEDGE, THE PLANS AND SPECIFICATIONS COMPLY WITH THE MINIMUM BUILDING CODES.

© 2017 HARVARD JOLLY, INC.

JLD Project #117030

**FP1.2**