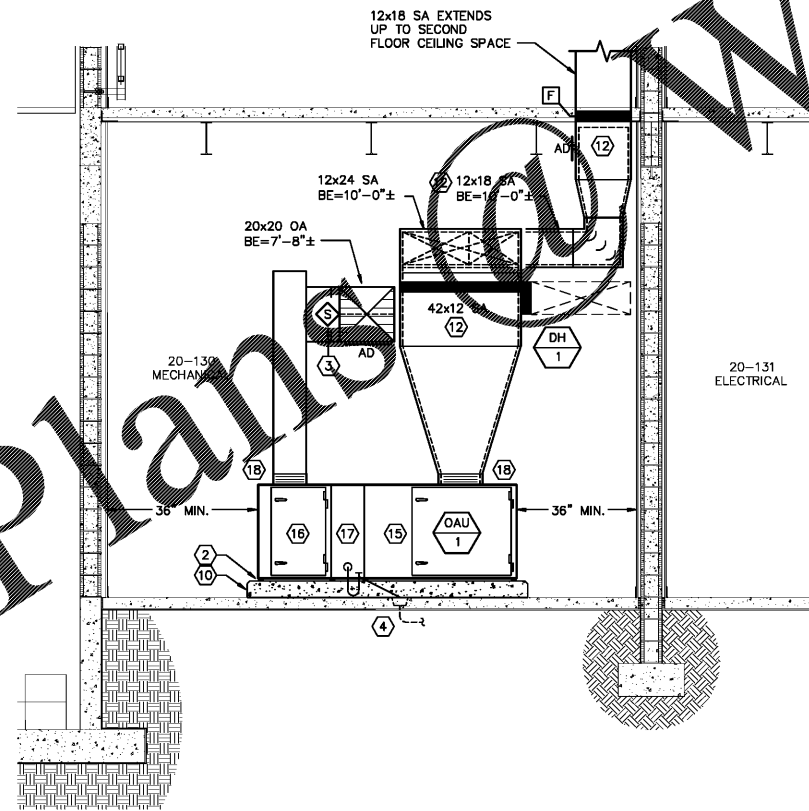
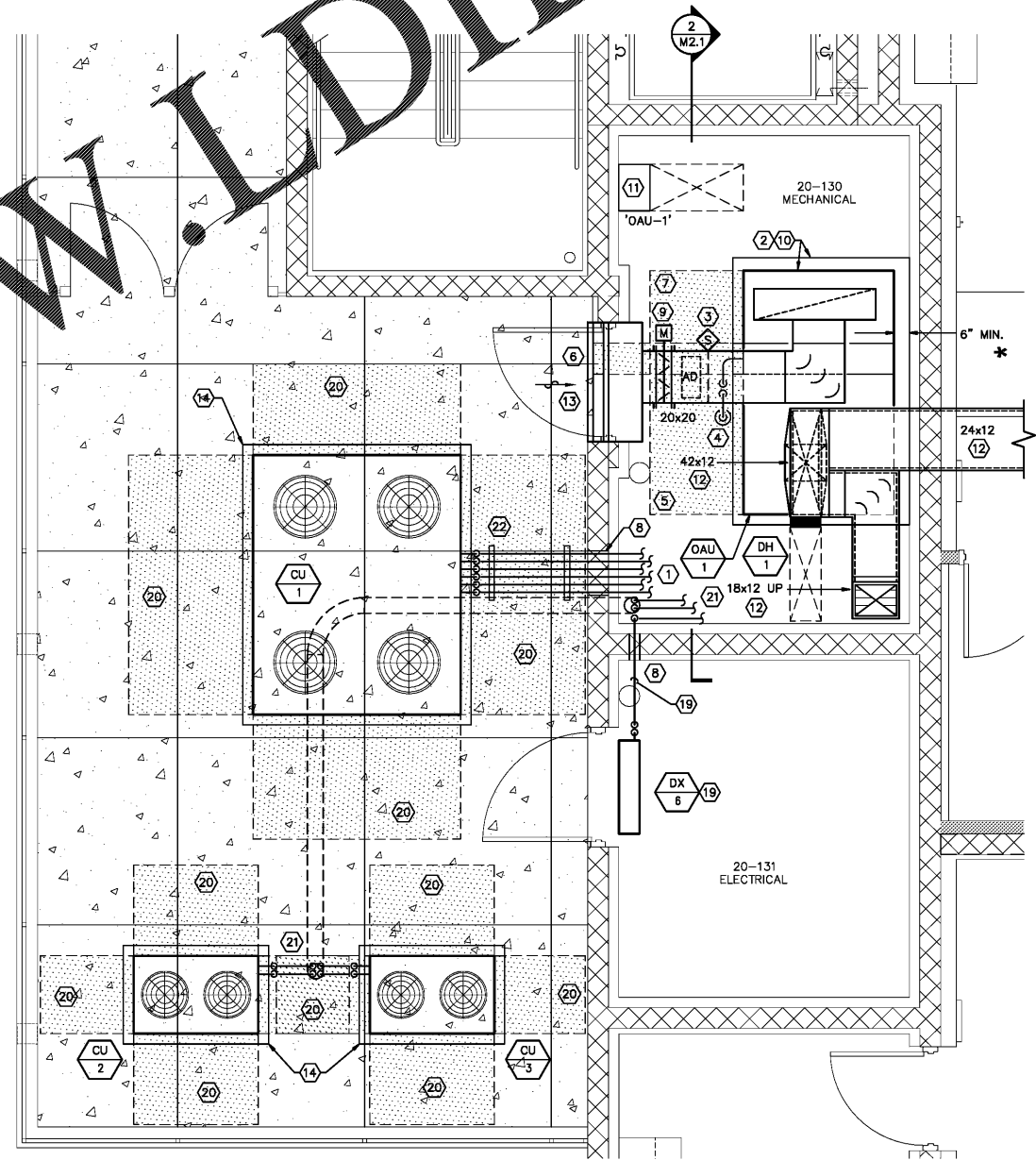


MECHANICAL ROOM AND SECTION PLAN NOTES

- ① INSULATED REFRIGERANT PIPING, LIQUID, SUCTION AND HOT GAS REHEAT, TO AHU. SEE COIL PIPING SCHEMATIC. INSTALL REFRIGERANT PIPING TO AHU COILS CLEAR OF UNIT FILTERS, FAN MOTORS AND ACCESS DOORS. SIZE AS NOTED.
- ② NEOPRENE PADS UNDER AHU WITH INTERNAL ISOLATORS. PROVIDE AT ALL AHU MODULE MOUNTING POINTS AND SIZE PER MANUFACTURERS RECOMMENDATIONS.
- ③ SMOKE DETECTOR LOCATED IN THE OUTSIDE AIR DUCT FOR OUTSIDE AIR HANDLING UNIT. SMOKE DETECTOR TO BE PROVIDED AND WIRED UNDER DIVISION 26, AND MOUNTED UNDER DIVISION 23. WIRE TO ACTIVATE FIRE ALARM SYSTEM UPON DETECTION OF SMOKE. THE FAN SHALL SHUT DOWN UPON ACTIVATION OF ANY STATION OF THE FIRE ALARM SYSTEM.
- ④ TYPICAL CONDENSATE DRAIN LINE WITH TRAP. SEE DETAIL. RUN FULL SIZE TO HUB DRAIN. COORDINATE LOCATION WITH PLUMBING DRAWINGS.
- ⑤ FAN MOTOR, DRIVE AND BEARING ACCESS AREA.
- ⑥ COIL PULL ACCESS AND SERVICE AREA.
- ⑦ FILTER REMOVAL AND ACCESS AREA.
- ⑧ PROVIDE PIPE SLEEVE WHERE PIPES PENETRATE WALLS AND FLOORS. SEE DETAIL.
- ⑨ AUTOMATIC MOTORIZED DAMPER, RUSKIN MODEL CD-50 OR APPROVED EQUAL DAMPER NORMALLY CLOSED; ENERGIZE OPEN WHEN OAU-1 IS ENERGIZED.
- ⑩ CONCRETE HOUSEKEEPING PAD HEIGHT SHALL BE AS REQUIRED TO PROVIDE PROPER CONDENSATE TRAP DEPTH, 6" TALL MINIMUM, 4" LARGER THAN UNIT FOOTPRINT IN EACH DIMENSION.
- ⑪ VARIABLE FREQUENCY DRIVE.
- ⑫ DOUBLE WALL PRE-INSULATED DUCT.
- ⑬ 36x24 OA LOUVER, RUSKIN MODEL EHH-601D. PROVIDE WITH PLENUM ON BACK OF LOUVER. VERIFY COLOR WITH ARCHITECT PRIOR TO INSTALLATION. SEE DETAIL.
- ⑭ 6" HIGH CONCRETE HOUSEKEEPING PAD, 4" LARGER THAN UNIT FOOTPRINT ON ALL FOUR SIDES.
- ⑮ FAN SECTION WITH ACCESS DOOR
- ⑯ FILTER/MIXING BOX SECTION WITH ACCESS DOOR
- ⑰ DX COOLING COIL SECTION
- ⑱ FLEXIBLE DUCT CONNECTION DURO-DYNE "METAL-FAB" HEAVY DUTY EXCELON. INSULATE WITH FLEXIBLE DUCT WRAP.
- ⑲ DX UNIT MOUNTED ON WALL ABOVE DOOR PER MANUFACTURER'S RECOMMENDATIONS. ROUTE FULL SIZE INSULATED COPPER CONDENSATE DRAIN LINE INTO ADJACENT MECH ROOM AND TERMINATE OVER HUBDRAIN. KEEP AMOUNT OF DRAIN PIPING WITHIN ELEC ROOM TO A MINIMUM.
- ⑳ ACCESS AREA AS REQUIRED BY UNIT MANUFACTURER FOR AIRFLOW, ACCESS, MAINTENANCE, ETC.
- ㉑ INSULATED REFRIGERANT PIPING ROUTED BELOW GRADE THRU 8" PVC CONDUIT TO WITHIN MECH ROOM. PIPING CONTINUES TO FIRST AND SECOND FLOOR CEILING SPACE TO ASSOCIATED DX UNITS. SEE M1.3 AND M1.4 FOR CONTINUATION. SEAL OPENINGS TO CONDUIT WATER TIGHT WITH HARDENING EXPANDABLE FOAM.
- ㉒ INSULATED REFRIGERANT PIPING SECURED TO CONCRETE SLAB WITH GALVANIZED UNISTRUT. TYPICAL. ALL EXTERIOR PIPING INSULATION TO BE COATED WITH TWO (2) COATS OF UV INHIBITOR PAINT.



2 LARGE SCALE MECH ROOM PLAN
M2.1 SCALE: 3/8"=1'-0"



1 LARGE SCALE MECH ROOM PLAN
M2.1 SCALE: 3/8"=1'-0"

This information is provided for informational purposes only. It is not intended to be used as a substitute for professional engineering or architectural services. The user hereby represents and warrants that it will be used only for the intended purpose and that it will not be used for any other purpose without the prior written consent of the provider.

Order Plans @ www.WLDLine.com

HARVARD • JOLLY
ARCHITECTURE
2047 VISTA PARKWAY, SUITE 100 | WEST PALM BEACH, FL 33411 | www.harvardjolly.com | AAC000119

J L R D
JOHNSON, LEVINSON
RAJAN, DAVILA, INC.
1450 Centrepark Boulevard, Suite 350
West Palm Beach, Florida 33401
(561) 699-2103 (561) 699-2103 Fax
www.jldr.com
Certification Number 60399
Michael P. Landrum, P.E. 30594
Charles C. Chalkers, P.E. 31936

STEM BUILDING
THE BENJAMIN SCHOOL - LOWER MIDDLE SCHOOL
11000 Ellison Wilson Road, North Palm Beach, FL 33408
CONSTRUCTION DOCUMENTS

Contract No.	16117.00	
Job No.	117030	
Date	10-23-17	
Drawn	WLM	
Revisions		
No.	Date	Note

TO THE BEST OF MY KNOWLEDGE, THE PLANS AND SPECIFICATIONS COMPLY WITH THE MINIMUM BUILDING CODES.

© 2017 HARVARD JOLLY, INC.

JLRD Project #117030
M2.1