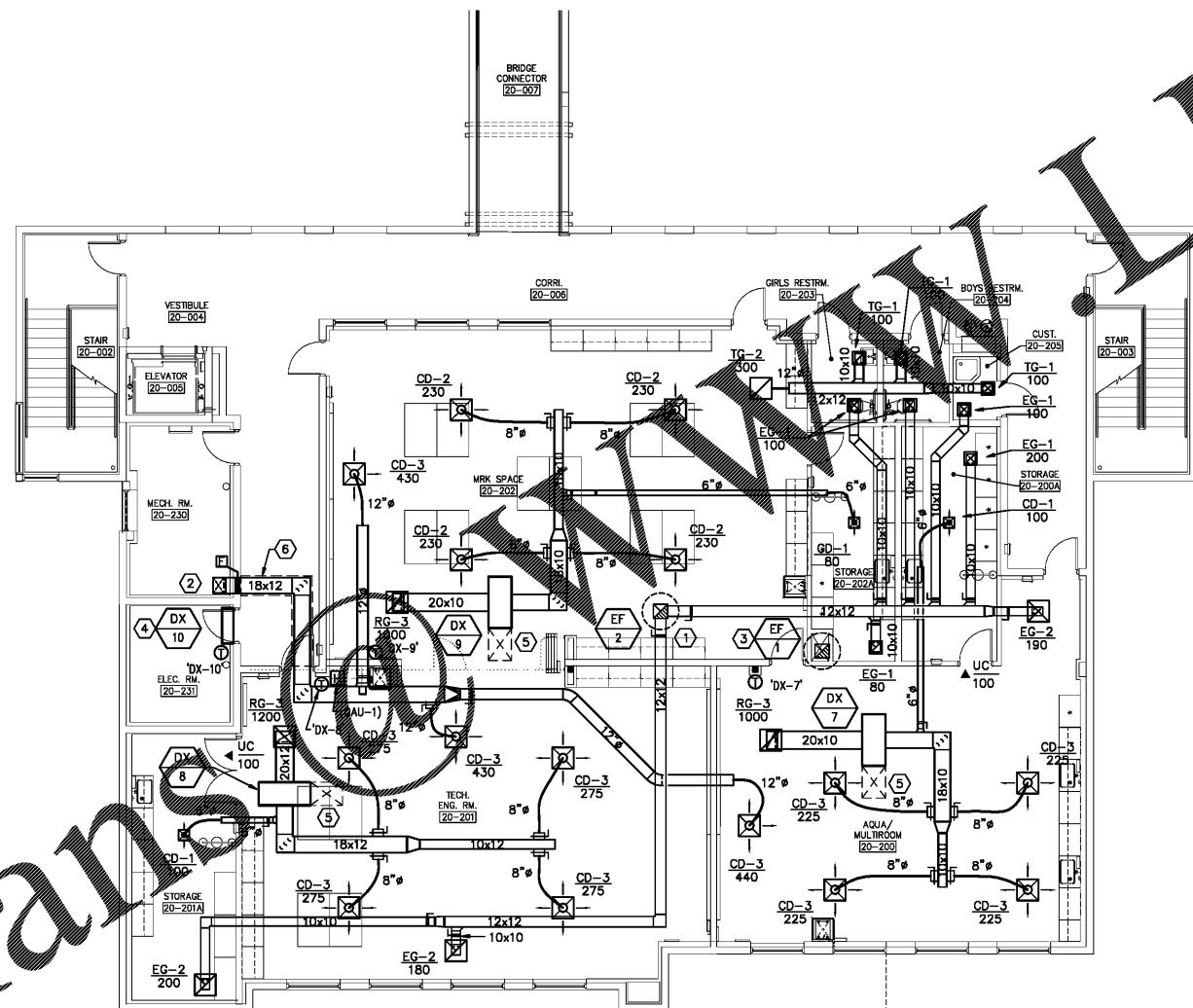


This information is intended for the professional use of the recipient and is not to be distributed, copied, or otherwise used in any way without the prior written consent of Harvard Jolly, Inc.

Order Plans



1 M1.2 2ND FLOOR MECHANICAL HVAC PLAN
 SCALE: 1/8"=1'-0"

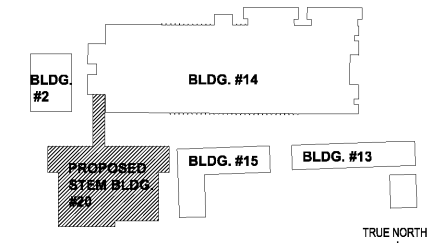
PLAN NOTES

- ① 16x16 EXHAUST AIR DUCT UP TO ROOF MOUNTED EXHAUST FAN. TWO (2) 12x12 EXHAUST AIR DUCTS TAP INTO 16x16 EXHAUST AIR DUCT (PLENUM).
- ② 18x12 SUPPLY AIR DUCT UP FROM MECHANICAL ROOM BELOW.
- ③ 16x16 EA DUCT UP FROM 1ST FLOOR CEILING SPACE, THRU CHASE, UP TO ROOF MOUNTED EXHAUST FAN (EF-1).
- ④ MOUNT DX UNIT ON WALL ABOVE DOOR PER MANUFACTURER'S RECOMMENDATIONS. PROVIDE WITH WALL MOUNTED, HARD WIRED T-STAT (ADJUSTABLE).
- ⑤ MAINTAIN MANUFACTURER REQUIRED CLEARANCE AT UNIT.
- ⑥ EXTERNALLY INSULATED WITH DUCTWRAP ABOVE UNCONDITIONED SPACES, PER SPECIFICATIONS.

OCCUPANCY SCHEDULE FOR BASIS OF VENTILATION AIR:

CLASSROOM	-----	23 PEOPLE
SYSTEM: OAU-1		
SUPPLY AIR	-----	1300 CFM
RETURN AIR	-----	0 CFM
OUTSIDE AIR	-----	1300 CFM
EXHAUST AIR	-----	780 CFM
RELIEF AIR	-----	370 CFM
EXFILTRATION	-----	150 CFM

VENTILATION BASED ON ASHRAE 62.1 - 2010.



KEY PLAN

HARVARD JOLLY ARCHITECTURE
 2047 VISTA PARKWAY, SUITE 100 | WEST PALM BEACH, FL 33411 | www.harvardjolly.com | AAC000119

J L R D
 JOHNSON, LEVINSON
 RAGAN, DAVILA, INC.
 1450 Centrepark Boulevard, Suite 350
 West Palm Beach, Florida 33401
 (561) 699-2303 (561) 699-2302 Fax
 www.jldr.com
 Certification Number 60399
 Michael P. Landrum, P.E. 30594
 Charles C. Chubberson, P.E. 31936

STEM BUILDING
THE BENJAMIN SCHOOL - LOWER/MIDDLE SCHOOL
 11000 Ellison Wilson Road, North Palm Beach, FL 33408
 CONSTRUCTION DOCUMENTS

Corr. No:	16117.00	
Job No:	117030	
Date:	10-23-17	
Drawn:	WLM	
Revisions		
No.	Date	Note

TO THE BEST OF MY KNOWLEDGE, THE PLANS AND SPECIFICATIONS COMPLY WITH THE MINIMUM BUILDING CODES.

© 2017 HARVARD JOLLY, INC.

JLRD Project #117030

M1.2