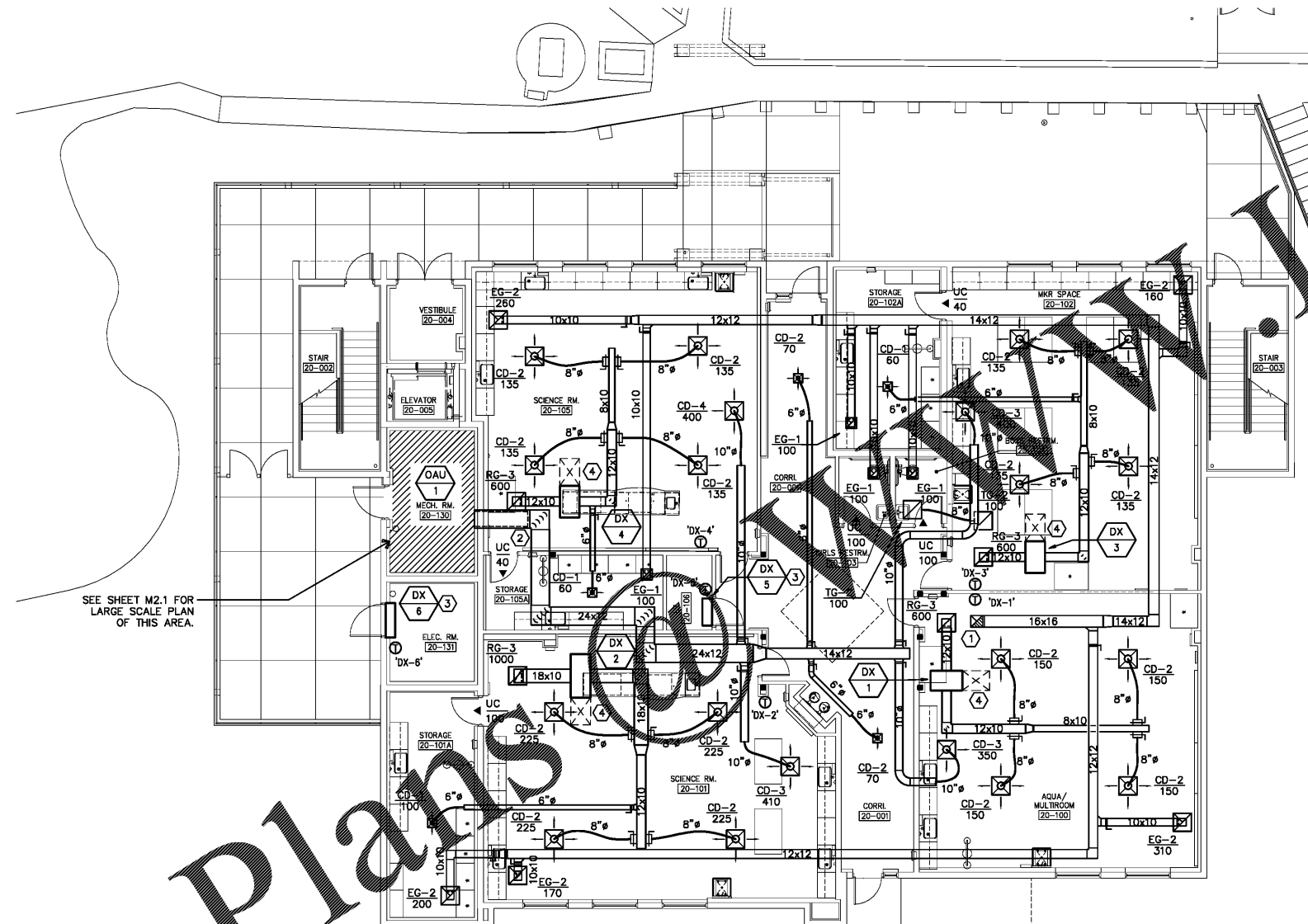


This information is intended for the professional use of the recipient only. It is not to be distributed, copied, or used for any other purpose without the prior written consent of Harvard Jolly, Inc. The user hereby agrees to hold Harvard Jolly, Inc. harmless for any and all claims, damages, or liabilities arising out of the use of this information.

# Order Plans



SEE SHEET M2.1 FOR  
LARGE SCALE PLAN  
OF THIS AREA.

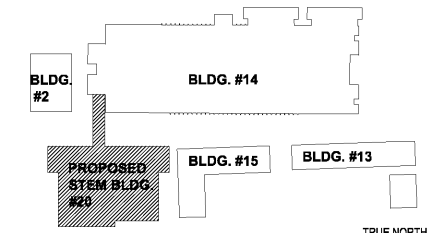
### PLAN NOTES

- ① 16x16 EXHAUST AIR DUCT UP THRU CHASE ABOVE. SEE SHEET M1.2 FOR CONTINUATION.
- ② DOUBLE WALL DUCT FROM THIS POINT BACK TO AHU.
- ③ MOUNT DX UNIT ON WALL ABOVE DOOR PER MANUFACTURER'S RECOMMENDATIONS. PROVIDE WITH WALL MOUNTED, HARD WIRED T-STAT (ADJUSTABLE).
- ④ MAINTAIN MANUFACTURER REQUIRED CLEARANCE AT UNIT.

### OCCUPANCY SCHEDULE FOR BASIS OF VENTILATION AIR:

CLASSROOM	-----	23 PEOPLE
SYSTEM: OAU-1		
SUPPLY AIR	-----	1700 CFM
RETURN AIR	-----	0 CFM
OUTSIDE AIR	-----	1700 CFM
EXHAUST AIR	-----	600 CFM
RELIEF AIR	-----	900 CFM
EXFILTRATION	-----	200 CFM

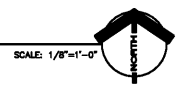
VENTILATION BASED ON ASHRAE 62.1 - 2010.



KEY PLAN

1 1ST FLOOR MECHANICAL HVAC PLAN

M1.1



SCALE: 1/8"=1'-0"

**HARVARD JOLLY**  
ARCHITECTURE

2047 VISTA PARKWAY, SUITE 100 | WEST PALM BEACH, FL 33411  
561-478-4457 | www.harvardjolly.com | AAC000119

**J L R D**  
JOHNSON, LEVINSON  
RAJAN, DAVIDA, INC.  
CONSTRUCTION DOCUMENTS

1450 Centrepark Boulevard, Suite 350  
West Palm Beach, Florida 33401  
(561) 699-2303 (561) 699-2302 Fax  
www.jldr.com

Certification Number 60399

Michael P. Landrum, P.E., 30594  
Charles C. Chalkers, P.E., 31936

STEM BUILDING  
THE BENJAMIN SCHOOL - LOWER MIDDLE SCHOOL  
11000 Ellison Wilson Road, North Palm Beach, FL 33408  
CONSTRUCTION DOCUMENTS

Corr. No:	16117.00	
Job No:	117030	
Date:	10-23-17	
Drawn:	WLM	
Revisions		
No.	Date	Note

TO THE BEST OF MY KNOWLEDGE, THE PLANS AND SPECIFICATIONS COMPLY WITH THE MINIMUM BUILDING CODES.

© 2017 HARVARD JOLLY, INC.

JLRD Project #117030

M1.1