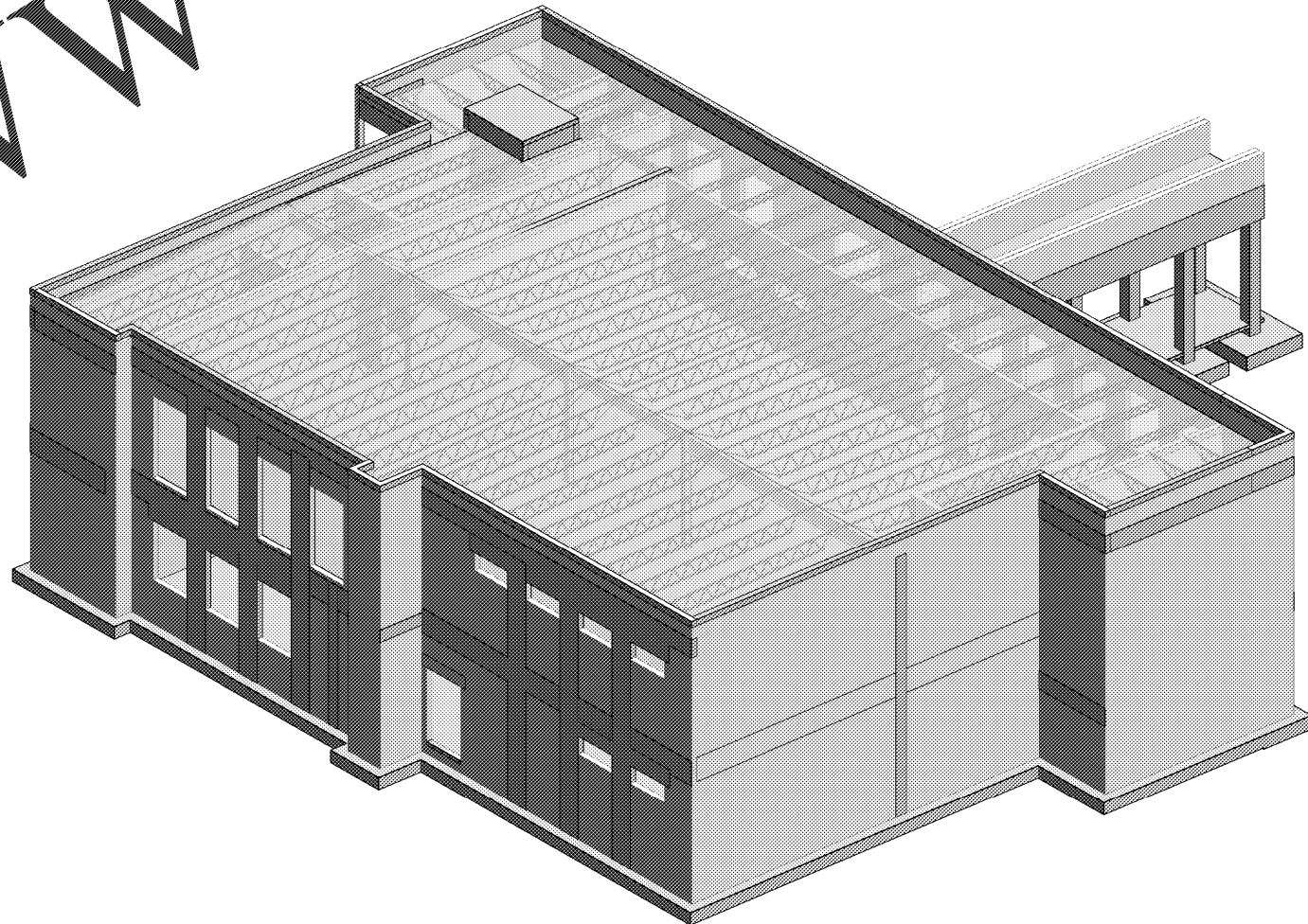


1 ISOMETRIC VIEW - 1
SCALE: S7.1



2 ISOMETRIC VIEW - 2
SCALE: S7.1

Order Plans @

WWW.LDILine.com

HARVARD • JOLLY
ARCHITECTURE
2714 Dr. MLK Jr. Street N. St. Petersburg, FL 33704 | 727-686-4611 | www.HarvardJolly.com | AA 0000119

MASTER CONSULTING ENGINEERS, INC.
11000 ELLISON WILSON ROAD, SUITE 307
BEACH, FLORIDA 33408
REGISTERED PROFESSIONAL ENGINEERS
STATE OF FLORIDA
PROFESSIONAL LICENSE NO. 1413130
CA 8426

**THE BENJAMIN SCHOOL -
LOWER/MIDDLE SCHOOL**
11000 Ellison Wilson Road, North Palm
Beach, FL 33408
CONSTRUCTION DOCUMENTS

Comm. No: Project Number

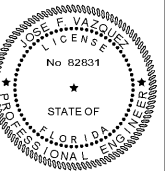
Date: Issue Date

Drawn: FR

Revisions

No.	Date	Note

DATE PLOTTED: 04/11/2023 10:45 AM
SCALE: S7.1



ISOMETRIC VIEWS

S7.1

TO THE BEST OF OUR KNOWLEDGE INFORMATION AND BELIEF, THESE STRUCTURAL PLANS CONFORM TO AND SATISFY, THE FLORIDA BUILDING CODE, 2014 EDITION, ACI 318-11 AND LOCAL CODES AS APPLICABLE