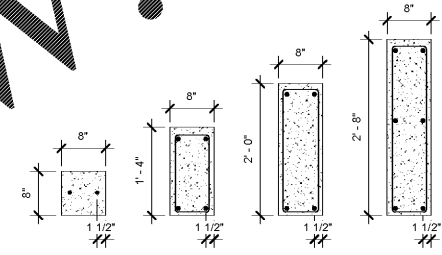


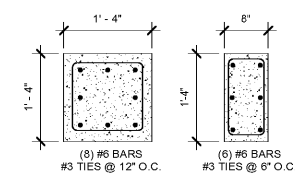
ROOF FRAMING PLAN																								ROOF FRAMING PLAN		
26' - 8"																								26' - 8"		
TICMU WALL																								TICMU WALL		
18' - 4"																								18' - 4"		
2ND FLOOR																								2ND FLOOR		
14' - 10"																								14' - 10"		
FOUNDATION																								FOUNDATION		
-1' - 4"	C1	C2	C3	C4	C5	C6	C7	C8	C9	C10	C11	C12	C13	C14	C15	C16	C17	C18	C19	C20	C21	C22	C23	-1' - 4"		
Column Locations	A-5	A(14' - 10 1/2")-5	A(29' - 1")-5	A(37' - 5")-5	A-6	A(14' - 10 1/2")-6	A(29' - 1")-6	A(37' - 5")-6	B-4(9' - 4 1/8")	B-5	B-5(6' - 4 1/8")	B(0' - 8 7/8")-5	B-6	B-7(3' - 2 3/8")	B-7(10' - 9 7/8")	B-7(18' - 6")	B-8(6' - 0")	B-8(15' - 8")	C-3	C(7' - 0 1/8")-6	D(2' - 2 7/8")-6	D(2' - 2 7/8")-6	D(2' - 2 7/8")-6	D(0' - 10")-8	D(11' - 7 1/2")-8	H-8

ROOF FRAMING PLAN								ROOF FRAMING PLAN
26' - 8"								26' - 8"
TICMU WALL								TICMU WALL
18' - 4"								18' - 4"
2ND FLOOR								2ND FLOOR
14' - 10"								14' - 10"
FOUNDATION								FOUNDATION
-1' - 4"	C26	C27	C28	C29	C30	C31	C32	-1' - 4"
Column Locations	K(3' - 0 1/8")-4(12' - 6")	K-7(16' - 2")	K(3' - 0 1/8")-7(-7' - 0")	1/8")-7(-11' - 10")	K(3' - 0 1/8")-7(-19' - 6")	K-8(-10' - 4")	K-8(-18' - 0")	

MARK	BEAM WIDTH	BEAM DEPTH	CONT. REINFORCING	REINFORCING	REMARKS
CB-1	8"	8"	(2) CENTERED	#3 @ 8" O.C.	
CB-2	8"	16"	(2) T&B CONT.	#3 @ 8" O.C.	
CB-3	8"	24"	(2) T&B CONT.	#3 @ 8" O.C.	
CB-4	8"	24"	(2) T&B	#3 @ 8" O.C.	
CB-5	16"	44"	(2) T&B	#3 @ 8" O.C.	



1 CONCRETE BEAMS DETAIL
SCALE: 3/4" = 1'-0"

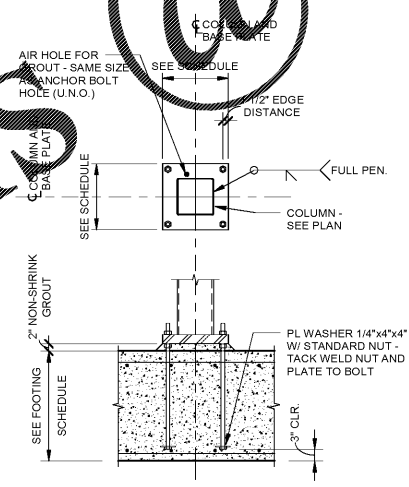


2 CONCRETE COLUMN DETAIL
SCALE: 3/4" = 1'-0"

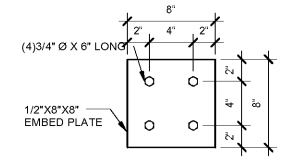
CONCRETE COLUMN SCHEDULE
SCALE: 1/8" = 1'-0"

ROOF FRAMING PLAN				ROOF FRAMING PLAN
26' - 8"				26' - 8"
2ND FLOOR FRAMING PLAN				2ND FLOOR FRAMING PLAN
14' - 5"				14' - 5"
FOUNDATION				FOUNDATION
-1' - 4"				-1' - 4"
Column Locations	H-3(7'8"-2(11'-4"))	H-7(11'-3")	H-7(7'-0")	
	BP-1	BP-1	BP-1	

STEEL COLUMN SCHEDULE
SCALE: 1/8" = 1'-0"



BP-1 BASE PLATE - BP1
SCALE: 1/2" = 1'-0"



3 HSS EMBED PLATE A
SCALE: 1/2" = 1'-0"

BASE PLATE	SIZE	ANCHOR BOLTS	REMARKS
BP-1	1-1/4"X14"X14"	(4) - 3/4"Ø	

HARVARD • JOLLY
ARCHITECTURE
2714 Dr. MLK Jr. Street N. St. Petersburg, FL 33704 | www.HarvardJolly.com | AA C000119

MASTER CONSULTING ENGINEERS
CONSISTERS, INC.
410 RAVENSWOOD RD., STE. 307
FT. LAUDERDALE, FL 33312
TEL: 954.776.1111 FAX: 954.776.1112
HARVARD • JOLLY ARCHITECTURE
2714 Dr. MLK Jr. Street N. St. Petersburg, FL 33704
www.HarvardJolly.com | AA C000119
CA: 8426 PROJ. NO. 1413-130

THE BENJAMIN SCHOOL -
LOWER/MIDDLE SCHOOL
11000 Ellison Wilson Road, North Palm
Beach, FL 33408
CONSTRUCTION DOCUMENTS

Comm. No.	Project Number	
Date:	Issue Date	
Drawn:	FR	
Revisions		
No.	Date	Note



SCHEDULES

S6.1

TO THE BEST OF OUR KNOWLEDGE INFORMATION AND BELIEF, THESE STRUCTURAL PLANS CONFORM TO AND SATISFY, THE FLORIDA BUILDING CODE, 2014 EDITION, ACI 318-11 AND LOCAL CODES AS APPLICABLE