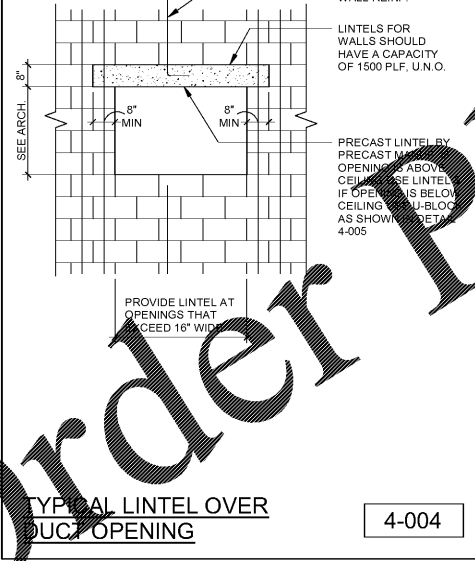
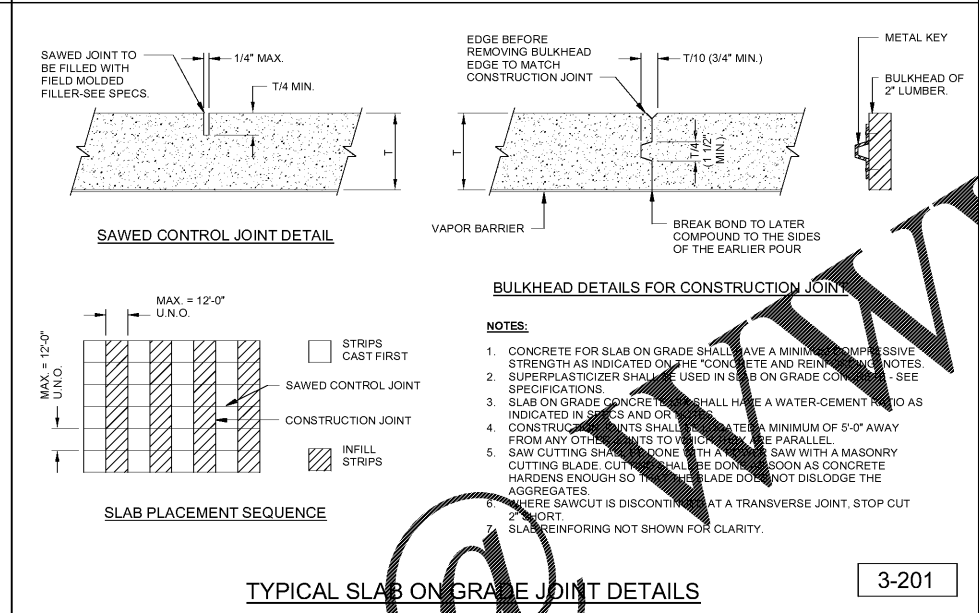


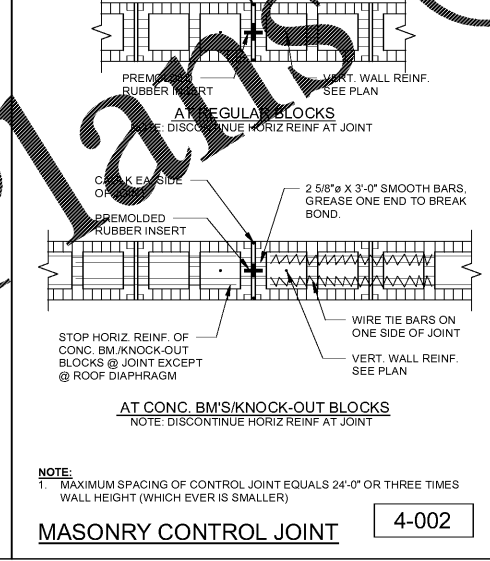
**CMU RETAINING WALL** 4-050



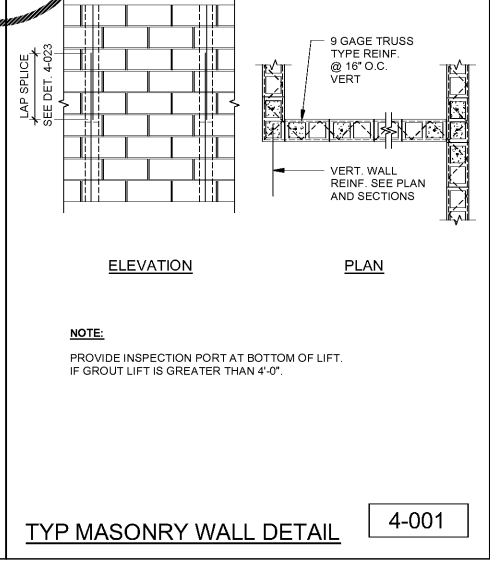
**TYPICAL LINTEL OVER DUCT OPENING** 4-004



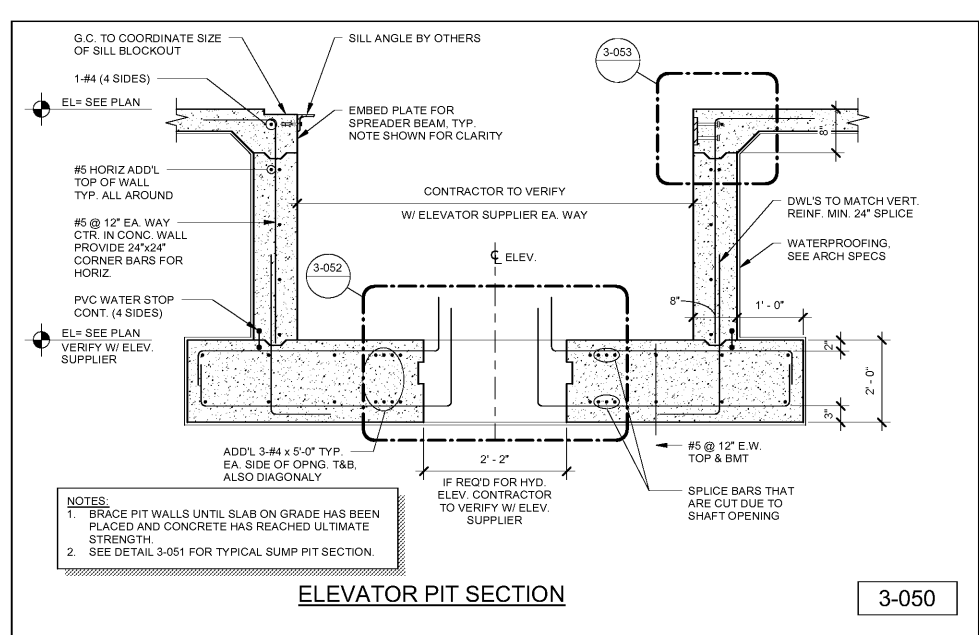
**TYPICAL SLAB ON GRADE JOINT DETAILS** 3-201



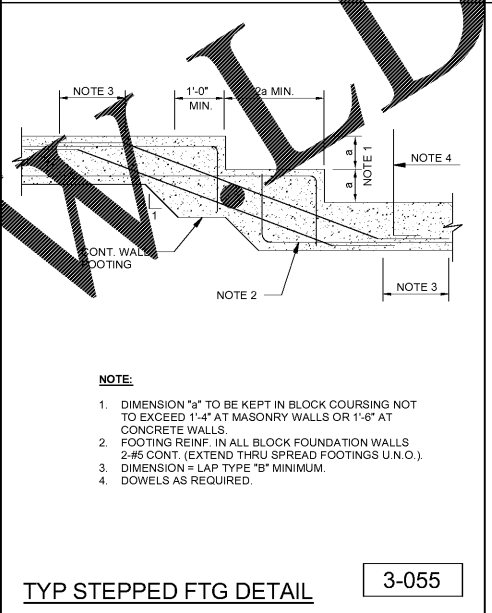
**MASONRY CONTROL JOINT** 4-002



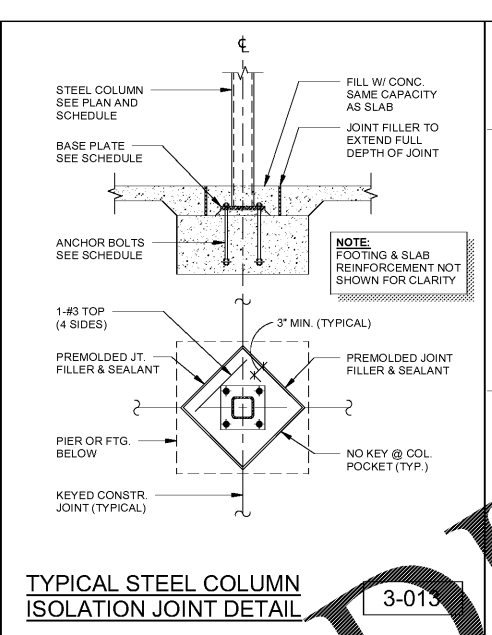
**TYP MASONRY WALL DETAIL** 4-001



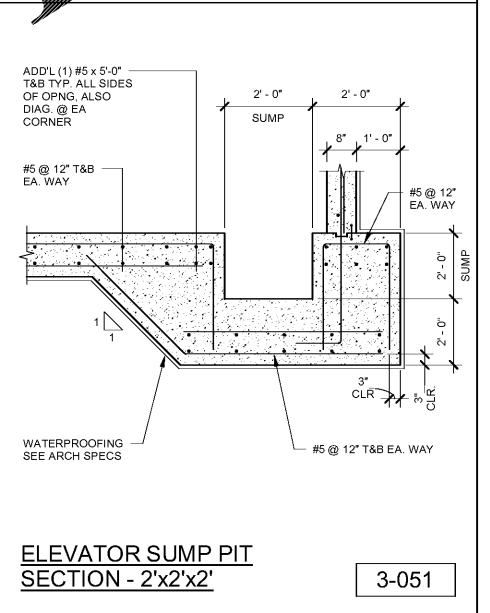
**ELEVATOR PIT SECTION** 3-050



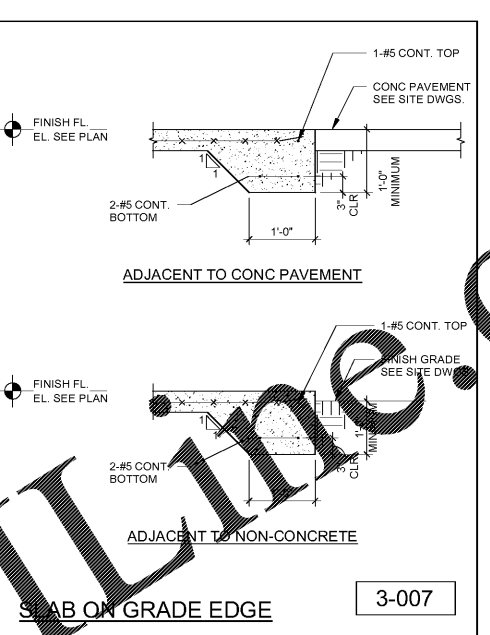
**TYP STEPPED FTG DETAIL** 3-055



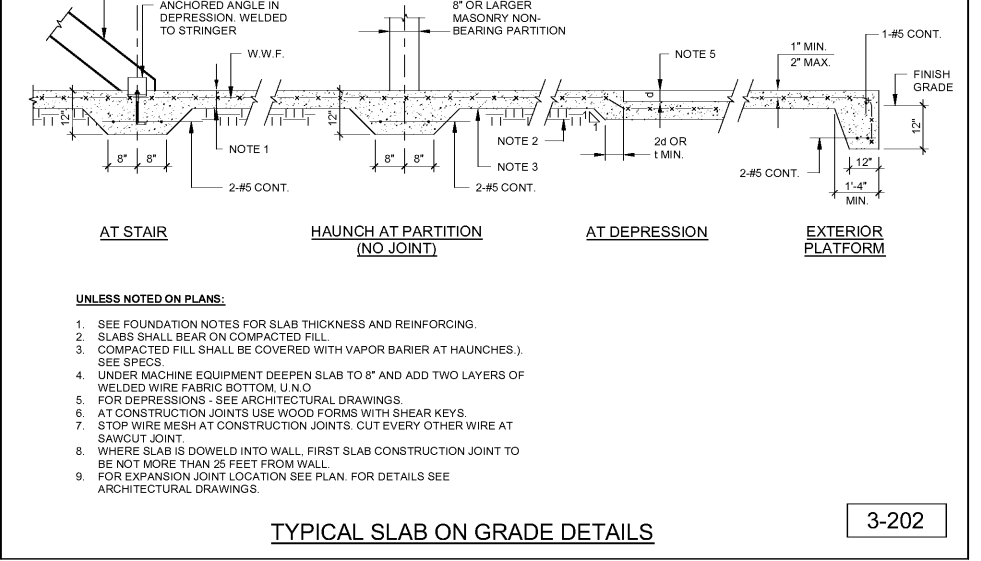
**TYPICAL STEEL COLUMN ISOLATION JOINT DETAIL** 3-013



**ELEVATOR SUMP PIT SECTION - 2'x2'x2'** 3-051



**SLAB ON GRADE EDGE** 3-007



**TYPICAL SLAB ON GRADE DETAILS** 3-202

**Order Plans @ www.onlinedrawings.com**

**HARVARD • JOLLY ARCHITECTURE**

2714 Dr. MLK Jr. Street N. St. Petersburg, FL 33704 | 727-696-4611 | www.HarvardJolly.com | AA 000119

PROJ. NO. 1413-130

THE BENJAMIN SCHOOL - LOWER/MIDDLE SCHOOL  
11000 Ellison Wilson Road, North Palm Beach, FL 33408  
CONSTRUCTION DOCUMENTS

CONSTRUCTION DOCUMENTS

Comm. No.	Project Number
Date:	Issue Date
Drawn:	FR

Revisions		
No.	Date	Note

NOTE: IN CASE OF CONFLICT BETWEEN INFORMATION SHOWN ON THIS DRAWING SET AND ARCHITECTURAL RECORD DRAWINGS, THE ARCHITECTURAL RECORD DRAWINGS SHALL PREVAIL. ORDER TO RECEIVE A CLARIFICATION BEFORE PROCEEDING TO WORK. DIMENSIONS OF REINFORCEMENT OF STRUCTURAL ELEMENTS SHOWN IN THIS DRAWING ARE MINIMUM TO BE USED UNLESS OTHERWISE (U.N.O.) IN PLANS.

NOTE: IN CASE OF CONFLICT BETWEEN INFORMATION SHOWN ON THIS DRAWING SET AND ARCHITECTURAL RECORD DRAWINGS, THE ARCHITECTURAL RECORD DRAWINGS SHALL PREVAIL. ORDER TO RECEIVE A CLARIFICATION BEFORE PROCEEDING TO WORK. DIMENSIONS OF REINFORCEMENT OF STRUCTURAL ELEMENTS SHOWN IN THIS DRAWING ARE MINIMUM TO BE USED UNLESS OTHERWISE (U.N.O.) IN PLANS.

NOTE: 1. SEE FOUNDATION NOTES FOR SLAB THICKNESS AND REINFORCING.  
2. SLABS SHALL BEAR ON COMPACTED FILL.  
3. COMPACTED FILL SHALL BE COVERED WITH VAPOR BARRIER AT HAUNCHES.  
4. UNDER MACHINE EQUIPMENT DEEPEN SLAB TO 8" AND ADD TWO LAYERS OF WELDED WIRE FABRIC BOTTOM, U.N.O.  
5. FOR DEPRESSIONS - SEE ARCHITECTURAL DRAWINGS.  
6. AT CONSTRUCTION JOINTS USE WOOD FORMS WITH SHEAR KEYS.  
7. STOP WIRE MESH AT CONSTRUCTION JOINTS. CUT EVERY OTHER WIRE AT SAWCUT JOINT.  
8. WHERE SLAB IS DOWELED INTO WALL, FIRST SLAB CONSTRUCTION JOINT TO BE NOT MORE THAN 25 FEET FROM WALL.  
9. FOR EXPANSION JOINT LOCATION SEE PLAN. FOR DETAILS SEE ARCHITECTURAL DRAWINGS.

NOTE: 1. MAXIMUM SPACING OF CONTROL JOINT EQUALS 24'-0" OR THREE TIMES WALL HEIGHT (WHICH EVER IS SMALLER)

NOTE: 1. CONCRETE FOR SLAB ON GRADE SHALL HAVE A MINIMUM COMPRESSIVE STRENGTH AS INDICATED ON THE "CONCRETE AND REINFORCING" NOTES.  
2. SUPERPLASTICIZER SHALL BE USED IN SLAB ON GRADE CONCRETE - SEE SPECIFICATIONS.  
3. SLAB ON GRADE CONCRETE SHALL HAVE A WATER-CEMENT RATIO AS INDICATED IN SPECS AND OR AT A MINIMUM OF 5'-0" AWAY FROM ANY OTHER JOINTS SHALL BE AT LEAST 5'-0" AWAY FROM ANY OTHER JOINTS TO VERTICAL JOINTS SHALL BE PARALLEL.  
4. CONSTRUCTION JOINTS SHALL BE AT LEAST 5'-0" AWAY FROM ANY OTHER JOINTS TO VERTICAL JOINTS SHALL BE PARALLEL.  
5. SAW CUTTING SHALL BE DONE WITH A MASONRY SAW WITH A MASONRY CUTTING BLADE. CUT SHALL BE DONE AS SOON AS CONCRETE HARDENS ENOUGH SO THAT THE BLADE DOES NOT DISLodge THE AGGREGATES.  
6. WHERE SAWCUT IS DISCONTINUED AT A TRANSVERSE JOINT, STOP CUT THROUGH JOINT.  
7. SLAB REINFORCING NOT SHOWN FOR CLARITY.

NOTE: 1. DIMENSION "a" TO BE KEPT IN BLOCK COURSE NOT TO EXCEED 1'-4" AT MASONRY WALLS OR 1'-6" AT CONCRETE WALLS.  
2. FOOTING REINF. IN ALL BLOCK FOUNDATION WALLS.  
3. DIMENSION "b" LAP TYPE "B" MINIMUM.  
4. DOWELS AS REQUIRED.

NOTE: 1. SEE ARCHITECTURAL DRAWINGS FOR ARCHITECTURAL RECORD DRAWINGS.  
2. SEE ARCHITECTURAL RECORD DRAWINGS FOR ARCHITECTURAL RECORD DRAWINGS.  
3. SEE ARCHITECTURAL RECORD DRAWINGS FOR ARCHITECTURAL RECORD DRAWINGS.  
4. SEE ARCHITECTURAL RECORD DRAWINGS FOR ARCHITECTURAL RECORD DRAWINGS.  
5. SEE ARCHITECTURAL RECORD DRAWINGS FOR ARCHITECTURAL RECORD DRAWINGS.  
6. SEE ARCHITECTURAL RECORD DRAWINGS FOR ARCHITECTURAL RECORD DRAWINGS.  
7. SEE ARCHITECTURAL RECORD DRAWINGS FOR ARCHITECTURAL RECORD DRAWINGS.  
8. SEE ARCHITECTURAL RECORD DRAWINGS FOR ARCHITECTURAL RECORD DRAWINGS.  
9. SEE ARCHITECTURAL RECORD DRAWINGS FOR ARCHITECTURAL RECORD DRAWINGS.