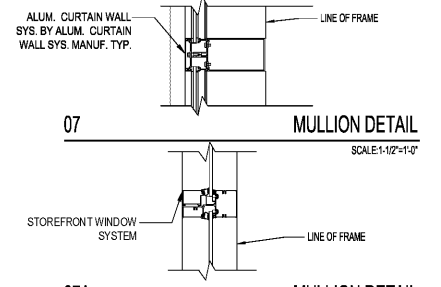
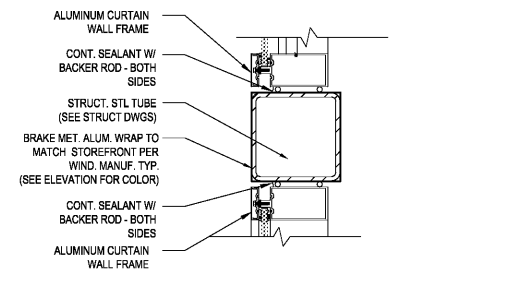


**06 JAMB DETAIL**  
SCALE: 1/12"=1'-0"

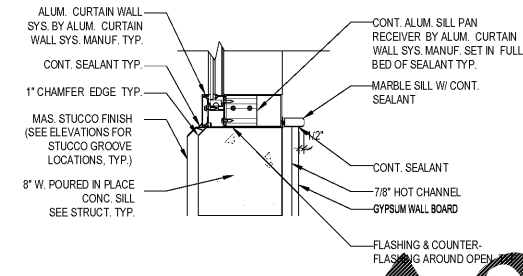


**07 MULLION DETAIL**  
SCALE: 1/12"=1'-0"

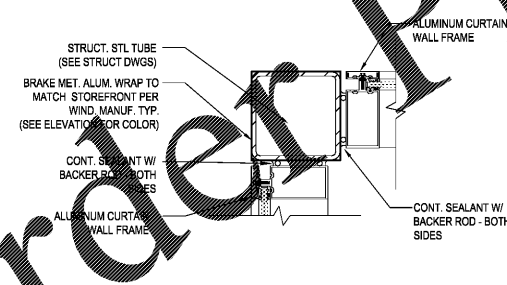
**07A MULLION DETAIL**  
SCALE: 1/12"=1'-0"



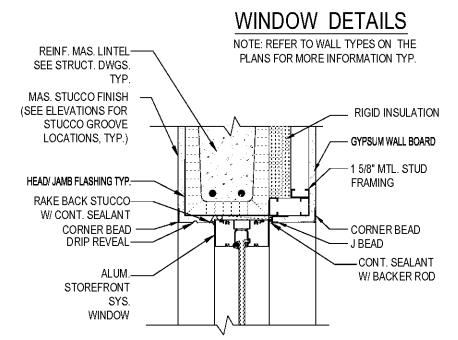
**08 MULLION DETAIL**  
SCALE: 1/12"=1'-0"



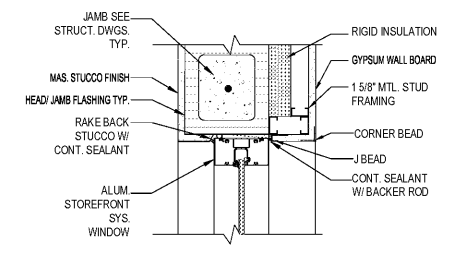
**09 SILL DETAIL**  
SCALE: 1/12"=1'-0"



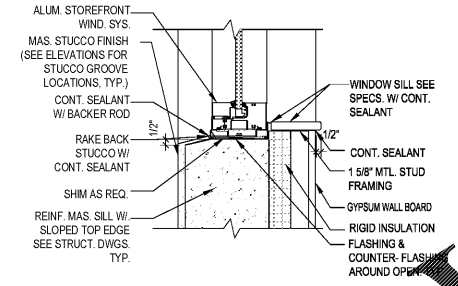
**10 JAMB DETAIL**  
SCALE: 1/12"=1'-0"



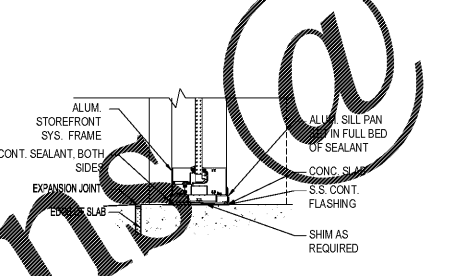
**01 HEAD DETAIL**  
SCALE: 1/12"=1'-0"



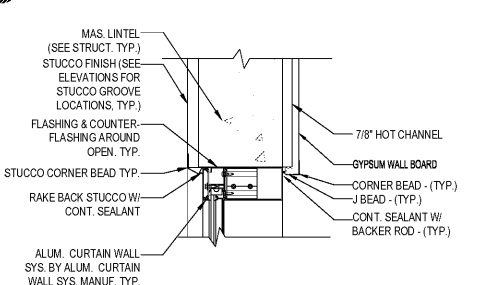
**02 SILL DETAIL**  
SCALE: 1/12"=1'-0"



**03 SILL DETAIL**  
SCALE: 1/12"=1'-0"



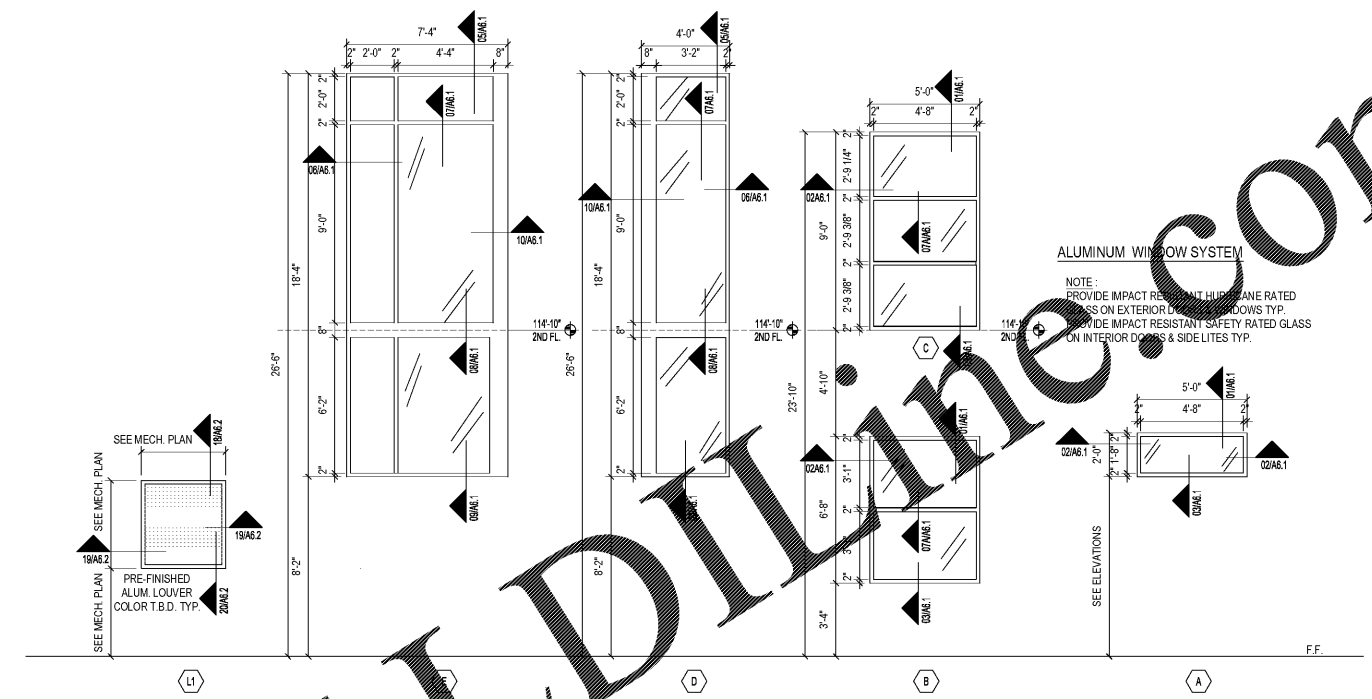
**SILL DETAIL**  
SCALE: 1/12"=1'-0"



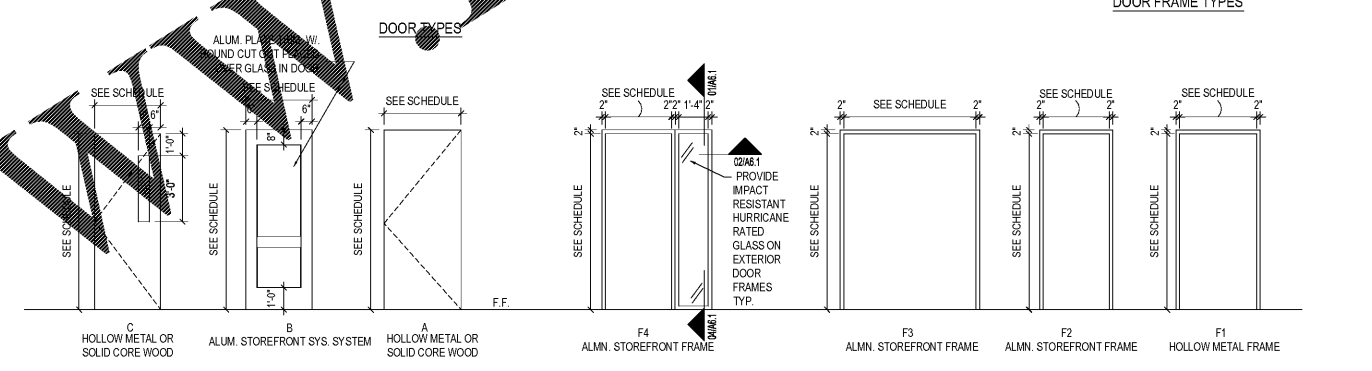
**05 HEAD DETAIL**  
SCALE: 1/12"=1'-0"

**WINDOW DETAILS**

NOTE: REFER TO WALL TYPES ON THE PLANS FOR MORE INFORMATION TYP.



**ALUMINUM WINDOW SYSTEM**  
NOTE: PROVIDE IMPACT RESISTANT HURRICANE RATED GLASS ON EXTERIOR DOORS & WINDOWS TYP. PROVIDE IMPACT RESISTANT SAFETY RATED GLASS ON INTERIOR DOORS & SIDE LITES TYP.



**WINDOW & DOOR ELEVATIONS**  
SCALE: 1/4"=1'-0"

Order Plans @ WWWWLDLINE.COM

**HARVARD JOLLY ARCHITECTURE**  
2047 VISTA PARKWAY, SUITE 100 | WEST PALM BEACH, FL 33411 | www.harvardjolly.com | 561-475-4457 | AAC000119

**STEM BUILDING THE BENJAMIN SCHOOL - LOWER/MIDDLE SCHOOL**  
11000 Ellison Wilson Road, North Palm Beach, FL 33408  
CONSTRUCTION DOCUMENTS

Comm. No: 16117.00  
Date: 10-23-17  
Drawn: me

Revisions		
No.	Date	Note

RENÉ TERCILLA AIA, REFP  
© 2017 HARVARD JOLLY, INC.  
**DETAILS**  
**A6.1**