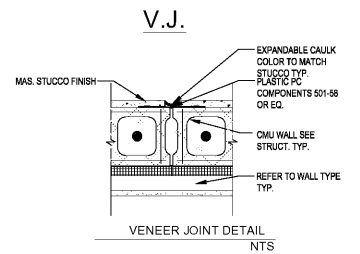
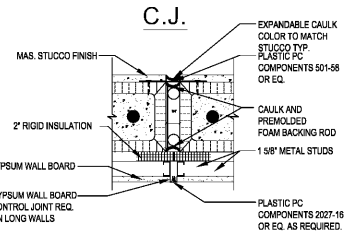


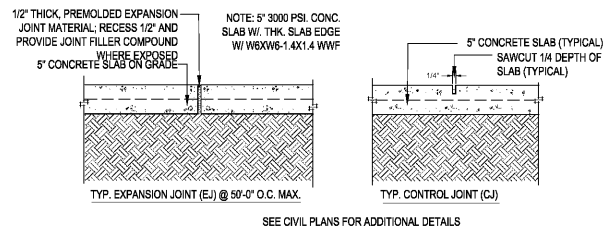
04 TYP. RIGID INSULATION TERMINATION DETAIL
SCALE: N.T.S.



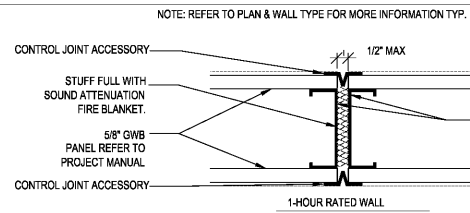
05 TYP. STUCCO VENEER JOINT DETAIL
SCALE: N.T.S.



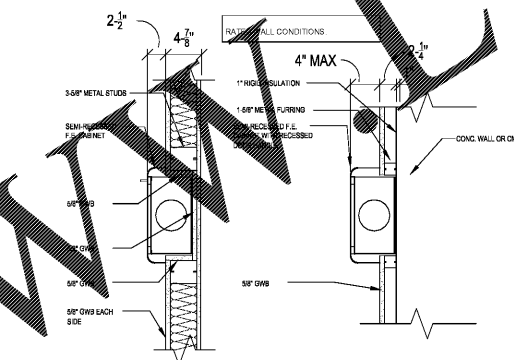
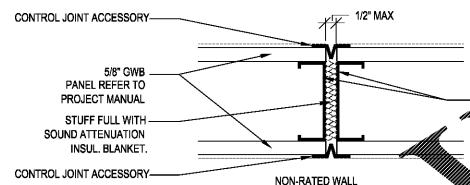
06 TYP. CONTROL JOINT DETAIL FOR MAS. WALLS
SCALE: N.T.S.



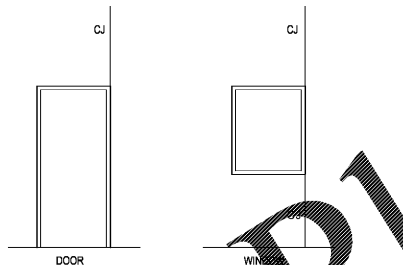
07 TYP. SIDEWALK DETAILS
SCALE: N.T.S.



08 TYP. INTERIOR C.J. DETAILS
SCALE: N.T.S.



09 TYP. F.E.C. DETAILS
SCALE: N.T.S.



10 TYP. INTERIOR C.J. DETAILS
SCALE: N.T.S.

SEE FINISH SCHEDULE FOR ALL FINISHES ON FLOORS, WALLS & CEILINGS.

GENERAL NOTES:

- ALL METAL STUDS SHALL BE 16" O.C. UNLESS OTHERWISE NOTED.
- ALL METAL STUDS UP TO 15'-0" AFF. SHALL BE 20 GA. TYPE "DWS".
- METAL STUDS HEIGHTS IN EXCESS OF 15'-0" AFF TO BE 6"-20 GA. TYPE "DWS" STUDS & MAY REQUIRE ADDITIONAL BRACING PER THE MTL. STD. MANUF.
- ALL METAL STUD WALLS ABOVE IN EXCESS OF 15'-0" WHICH ARE NOT ABUTTED BY A HARD CEILING ON ONE SIDE SHALL BE BRACED PER CONTRACTOR PROVIDED ENGINEERING DETAILS DETAILS.
- 20 GA. METAL BACKING PLATE IS TO BE INSTALLED AS A GENERAL MULTIPURPOSE FLAT STOCK THAT IS TO BE USED FOR ALL BACKER PLATES TO SUPPORT SHELVES CASWORK, FIXTURES OR HANDRAILS ETC. IN METAL STUD FRAMED WALLS.
- STC RATINGS INDICATED ARE TO BE CONSTRUCTED PER THE GYPSUM ASSOCIATION "FIRE RESISTANCE DESIGN MANUAL" 18TH EDITION.
- STC RATINGS INDICATED FOR MASONRY ARE TO BE CONSTRUCTED PER THE NATIONAL CONCRETE MASONRY ASSOCIATION TEK 13-1A 2000.
- PROVIDE ABUSE RESISTANT GWB TO 8'-0" AFF IN ALL CORRIDORS AND LATH.
- INSTALL MOISTURE RESISTANT GYPSUM WALLBOARD SUBSTRATE ON ALL WALL AREAS AND WALLS TO RECEIVE CERAMIC TILE.
- INSTALL CERAMIC TILE ON THE WALLS BEHIND & ON SIDES WALLS @ THE DRINKING FOUNTAIN & FLOOR SINK LOCATION WITH WIDTH OF THE DRINKING FOUNTAIN & FLOOR SINK AREA.
- HORIZONTAL BLINDS SHALL BE PROVIDED AT ALL EXTERIOR AND INTERIOR WINDOWS IN THE PROJECT SEE PLANS FOR WINDOW LOCATIONS, REFER SPECS.
- SEE LIFE SAFETY PLANS FOR WALL FIRE RATINGS AND SMOKE PARTITIONS.
- INSTALL CORNERGUARDS THROUGHOUT EACH BLDG ON ALL EXPOSED CORNERS. SEE SPECS. CONTRACTOR TO PROVIDE LOCATIONS AND QUANTITIES REQ.
- THE RIGID INSULATION BOARD ON THE WALL TYPES, REFER TO SPECS, COORDINATE ALL TYPES OF GWB TO BE USED ON EACH WALL TYPE WITH ROOM USE AND THE FINISH SCHEDULE. SEEN ALL CONDUITS & J-BOXES IN STUD OR AIR SPACE PROVIDED.
- THE FOLLOWING STC RATINGS ARE TO BE MET ON EACH NEW DOOR:
 - A. MECHANICAL ELECTRICAL DOORS TO THE CORRIDOR MUST MEET A 30 STC PROVIDE ACCORDINGLY TO MEET THE STC REQUIRED
 - B. MECHANICAL ELECTRICAL DOORS TO THE CORRIDOR MUST MEET A 30 STC PROVIDE ACCORDINGLY TO MEET THE STC REQUIRED
- GROUT FILL ALL CMU WALL CELLS AROUND MECH. & ELECTRICAL ROOMS TYP.
- GROUT FILL ALL CMU WALL CELLS AT WALLS WHERE INDICATED ON STRUCT. DWGS.
- GROUT FILL ALL CMU WALL CELLS AT WALLS TO SUPPORT ALUM. CANOPY.
- REFER TO ARCH. (THIS SHEET) & STRUCTURAL DWGS. FOR CMU CONTROL JOINT DETAILS.
- SOUND ATTENUATION BLANKETS REFERRED TO ON WALL TYPES ARE BASED ON THE JOHNS MANSVILLE SOUND CONTROL BATTS- FORMALDEHYDE-FREE FIBER GLASS SOUND CONTROL INSULATION OR APPROVED EQUAL TO MEET THE REQUIRED STC LEVELS TYP.
- FIRE EXTINGUISHERS- PROVIDE ACCORDINGLY FOR THE ROOMS SHOWN ON THE PLANS:
 - A. FLAMMABLE AREAS: (SODIUM BICARBONATE 40 BC)
 - BOILER ROOMS
 - AIR HANDLING UNIT ROOMS
 - FLAMMABLE LIQUID STORAGE AREAS
 - TEACHER LOUNGES
 - B. KITCHENS:
 - ALKALINE DRY CHEMICAL EXTINGUISHER (TYPE K) FOR SAPONIFICATION OF GREASES, WITHIN 15' OF COOKING EQUIPMENT
 - C. HAZARDOUS AREAS (4A-60BC):
 - ELECTRICAL ROOMS
 - D. LOW HAZARD AREAS (2A- 10BC):
 - CORRIDORS AND REMAINING ROOMS
 - CLASS A OR B FIRE AREAS

NOTES FOR ALL INTERIOR SOFFITS & CLGS.: STEEL FRAMING FOR SUSPENDED AND FURRED CEILINGS:

- PROVIDE COMPONENTS COMPLYING WITH ASTM C 754 FOR MATERIALS AND SIZES UNLESS OTHERWISE INDICATED.
- TIE WIRE AND HANGER WIRE: ASTM A641, CLASS 1 ZINC COATING, SOFT TEMPER OR OF A MATERIAL AND SIZE HAVING SUPERIOR CORROSION RESISTANCE AND EQUIVALENT STRENGTH TO THE GALVANIZED STEEL WIRE SPECIFIED.
- TIE WIRE SHALL BE 18 GAUGE GALVANIZED ANNEALED WIRE.
- HANGER WIRE SHALL BE 8 GAUGE GALVANIZED ANNEALED WIRE.
- CARRYING CHANNELS: SHALL BE 16 GAUGE GALVANIZED COLD ROLLED CHANNELS 1-1/2 INCHES DEEP OR AS INDICATED ON THE DWGS., WEIGHING A MINIMUM OF 475 POUNDS PER THOUSAND LINEAL FEET. PROTECTIVE COATING SHALL BE G40 HOT-DIP GALVANIZED COATING PER ASTM A525.
- STEEL RIGID FURRING CHANNELS: ASTM C645, HAT-SHAPED, DEPTH OF 7/8 INCH, AND 0.0179 INCH THICK, UNLESS OTHERWISE INDICATED. PROTECTIVE COATING SHALL BE G40 HOT-DIP GALVANIZED COATING PER ASTM A525.
- GRID SUSPENSION SYSTEM OF INTERIOR CEILINGS: ASTM C645, MANUFACTURER'S STANDARD DIRECTHUNG GRID SUSPENSION SYSTEM COMPOSED OF THE MAIN BEAMS AND CROSS FURRING MEMBERS THAT INTERLOCK TO FORM A MODULAR SUPPORTING NETWORK.

CONSTRUCTION REQUIREMENTS FOR BLDG#20 TYPE IIB:

- STRUCTURAL FRAME: 0 HR. RATING REQUIRED
- BEARING WALLS: 0 HR. RATING REQUIRED
- FLOOR: 0 HR. RATING REQUIRED
- FLOOR: 0 HR. RATING REQUIRED
- FULLY SPRINKLERED: BLDG#20

WALL TYPE NOTES:

- SEE FINISH SCHEDULE FOR ALL FINISHES ON WALLS
- FOR ALL FIRE RATED WALLS PROVIDE STENCILING ABOVE CLG. TILES STATING FIRE AND SMOKE BARRIER - PROTECT ALL OPENINGS.
- REFER TO LIFE SAFETY PLANS (LS1.0-LS1.2) FOR LOCATIONS OF RATED WALL ASSEMBLIES; CONTRACTOR SHALL BE RESPONSIBLE FOR MAINTAINING ALL NOTED RATINGS.
- WALL BOARD AND SURFACE FINISH MATERIAL SHALL EXTEND A MINIMUM OF 6" ABOVE NEAREST ADJACENT CEILING, UNLESS NOTED OTHERWISE.
- ALL PENETRATIONS OF RATED STEEL STUD PARTITION WALLS AND WALL EXTENSIONS, FLOOR AND ROOF SHALL BE CONSTRUCTED IN ACCORDANCE WITH ONE OF THE FOLLOWING UL SYSTEMS:
 - SYSTEM NO. C-AJ-2218
 - SYSTEM NO. W-L-1176
 - SYSTEM NO. C-AJ-1014
 - SYSTEM NO. W-L-2154
 - SYSTEM NO. W-L-1054
 - SYSTEM NO. W-L-2148
- ALTERNATE PENETRATION PROTECTION SYSTEMS MUST BE TEST CERTIFIED AND SUBMITTED FOR REVIEW.

GENERAL NOTES:

- CONTINUED
- HORIZONTAL BLINDS SHALL BE PROVIDED AT ALL EXTERIOR AND INTERIOR WINDOWS IN THE PROJECT SEE PLANS FOR WINDOW LOCATIONS, REFER TO SPECIFICATIONS.
 - INSTALL 6" HIGH CORNERGUARDS THROUGHOUT EACH BUILDING THAT IS PART OF THE PROJECT ON ALL EXPOSED CORNERS. SEE SPECIFICATIONS. CONTRACTOR TO PROVIDE LOCATIONS AND QUANTITIES REQUIRED.
 - SKIM COAT KNOCK-DOWN PLASTER FINISH ON ALL GWB WALLS & GWB WALLS TO HAVE A LEVEL 4 FINISH THROUGHOUT THE PROJECT.
 - IN ALL MECHANICAL ROOMS INSTALL TECTUM PANELS STARTING 18" AFF AND TO THE UNDERSIDE OF THE ROOF OR FLOOR DECK ABOVE ON EACH WALL LOCATED AROUND THE SPACE. CUT PANELS TO FIT AROUND EACH DUCT WALL PENETRATION. REFER TO SPECS FOR TECTUM PANEL INFORMATION.
 - ALL WINDOW & DOOR OPENING STUD FRAMING STUDS: COLD-FORMED GALVANIZED STEEL C-STUDS. MATERIAL: GALVANIZED STEEL MEETING OR EXCEEDING THE REQUIREMENTS OF ASTM A754-15 FOR CONDITIONS INDICATED BELOW. FLANGE LENGTH: 1.25" (32 MM) 125 FLANGE, WEB DEPTH 1-5/8" AND 3-5/8" AND AS INDICATED ON DRAWINGS.
 - MINIMUM MATERIAL THICKNESS: TRADITIONAL 18GA.
 - PUNCH OUTS: 12" (305 MM) FROM BASE AND EVERY 48" (1219 MM) THEREAFTER.
 - DOUBLE STUDS AT EACH JAMB, SILL & HEAD OF DOOR & WINDOW OPENINGS.

Comm. No: 16117.00

Date: 10-23-17

Drawn: ms

Revisions

No.	Date	Note

RENE TERCILLA AIA, REFP
© 2017 HARVARD JOLLY, INC.

Order Plans @