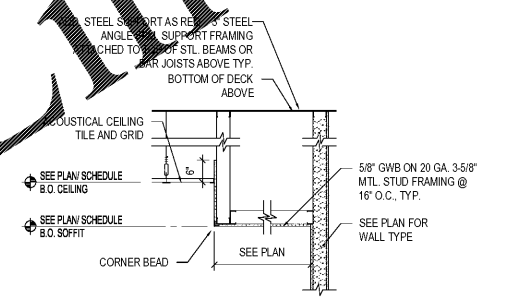


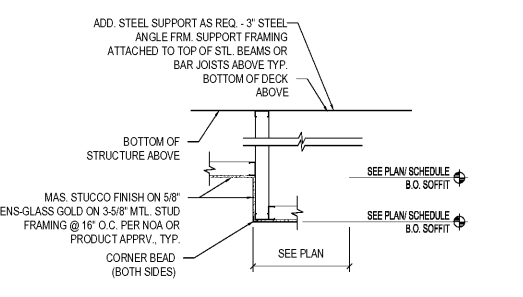
01 2ND FLOOR CEILING PLAN
SCALE: 1/8" = 1'-0" TRUE NORTH

CEILING LEGEND
REFER TO ELECTRICAL DWGS FOR FIXTURE SCHEDULE TYP.

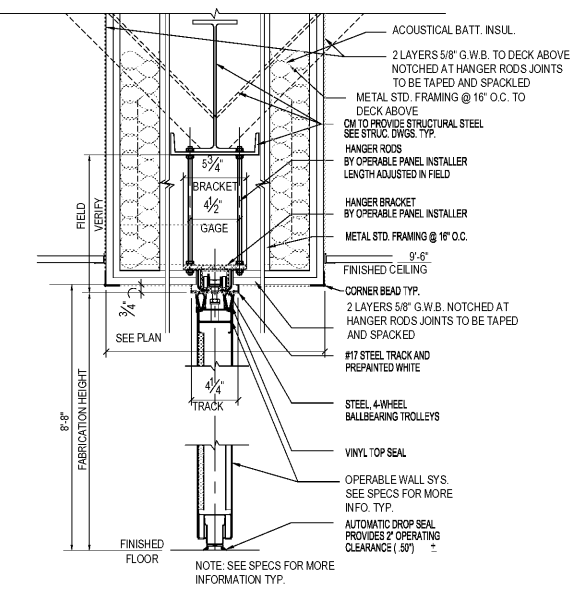
- GYP-SUM WALL BOARD CEILING, SOFFIT OR HEADER
- CEILING W/ GRID 2x2 LAY-IN ACOUSTICAL
- SUSPENDED STUCCO SYSTEM W/ (CJ) CONTROL JOINTS & NOA OR PRODUCT APPROVAL (SEE PLAN)
- LED FIXTURE TYPES REFER TO ELECTRICAL DWGS FOR INFO. TYP.
- SUPPLY DIFFUSER
- RETURN GRILLE
- CEILING EXHAUST FAN WITH INTEGRAL GRILLE. REFER TO MECH. DWGS.
- EMERGENCY LIGHT, REFER TO ELECTRICAL DRAWINGS
- EMERGENCY EXIT LIGHTS
- PROVIDE REVEAL DRYWALL TRIM AT ALL LOCATIONS WHERE GYPSUM WALL BOARD (GWB) ABUTS A DISSIMILAR MATERIAL TYPICAL UNLESS NOTED OTHERWISE.
- REFER TO FINISH SCHEDULE FOR CEILING HEIGHT FOR EACH ROOM.
- AREA NOT IN SCOPE OF PROJECT



02 CLG. DETAIL
SCALE: 1/2" = 1'-0"



03 CLG. DETAIL
SCALE: 1/2" = 1'-0"



04 OPERABLE PARTITION DETAIL
SCALE: 1/2" = 1'-0"

HARVARD JOLLY ARCHITECTURE
2047 VISTA PARKWAY, SUITE 100 | WEST PALM BEACH, FL 33411 | www.harvardjolly.com | 561-475-4457 | AAC000119

STEM BUILDING THE BENJAMIN SCHOOL - LOWER/MIDDLE SCHOOL
11000 Ellison Wilson Road, North Palm Beach, FL 33408
CONSTRUCTION DOCUMENTS

Comm. No: 16117.00
Date: 10-23-17
Drawn: ms

Revisions		
No.	Date	Note

RENÉ TERCILLA AIA, REFP
© 2017 HARVARD JOLLY, INC.

CLG. PLAN
A1.4

Order Plans

P:\18117_00_Benjamin Lower School New STEM Building\10_Project Development\11_Construction Documents\11.4_DWG\10-23-17_PCF.dwg, 10/23/2017 3:52:58 PM, DWG, 10-23-17_PCF.dwg