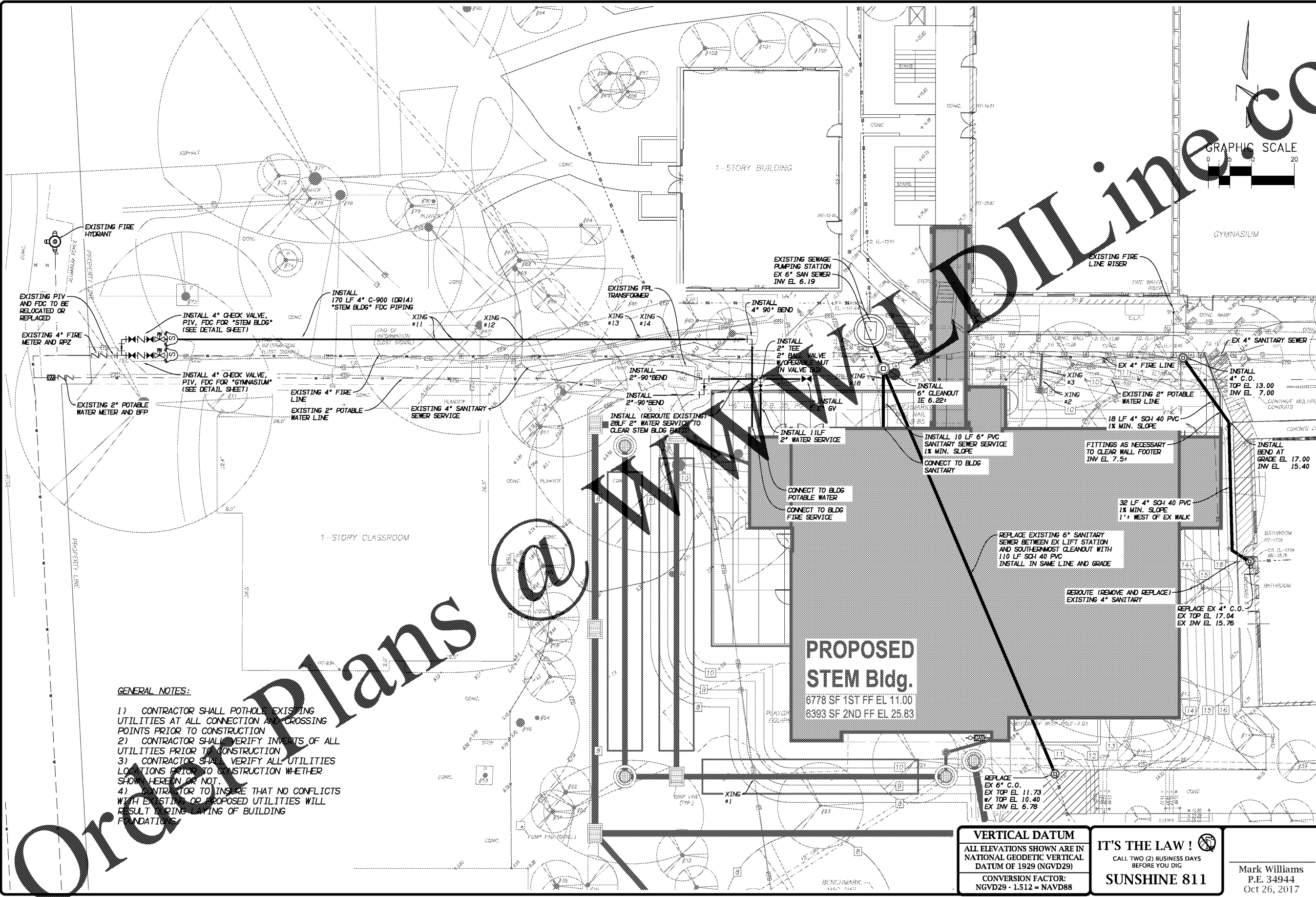


PLOT DATE: Oct 26, 2017 TIME: 3:02pm BY: agreen
 DRAWING: P:\161147 Benjamin School STEM Bldg\KA.DWG\CD4.161147.PLAN-WATR-SEWR.dwg LAYOUT: C04



GENERAL NOTES:

- 1) CONTRACTOR SHALL POTHOLE EXISTING UTILITIES AT ALL CONNECTION AND CROSSING POINTS PRIOR TO CONSTRUCTION
- 2) CONTRACTOR SHALL VERIFY INVERTS OF ALL UTILITIES PRIOR TO CONSTRUCTION
- 3) CONTRACTOR SHALL VERIFY ALL UTILITIES LOCATIONS PRIOR TO CONSTRUCTION WHETHER SHOWN HEREIN OR NOT.
- 4) CONTRACTOR TO INSURE THAT NO CONFLICTS WITH EXISTING OR PROPOSED UTILITIES WILL RESULT DURING LAYING OF BUILDING FOUNDATIONS

PROPOSED STEM Bldg.
 6778 SF 1ST FF EL 11.00
 6393 SF 2ND FF EL 25.83

VERTICAL DATUM
 ALL ELEVATIONS SHOWN ARE IN NATIONAL GEODETIC VERTICAL DATUM OF 1929 (NGVD29)
 CONVERSION FACTOR:
 NGVD29 - 1.512 = NAVD88

IT'S THE LAW!
 CALL TWO (2) BUSINESS DAYS BEFORE YOU DIG
SUNSHINE 811

Mark Williams
 P.E. 34944
 Oct 26, 2017

KESHAVARZ ASSOCIATES
 Civil Engineers • Landscape Architects
 711 North Dixie Highway, Suite 101
 West Palm Beach, Florida 33411
 Tel: (561) 689-8666
 Certificate of Authorization No. 6897

No.	Date	Description

WATER AND WASTEWATER PLAN

BENJAMIN SCHOOL STEM BUILDING
 PALM BEACH COUNTY, FLORIDA

PROJECT No.	16-1147
SHEET No.	C04