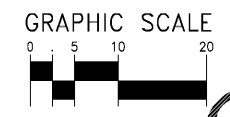
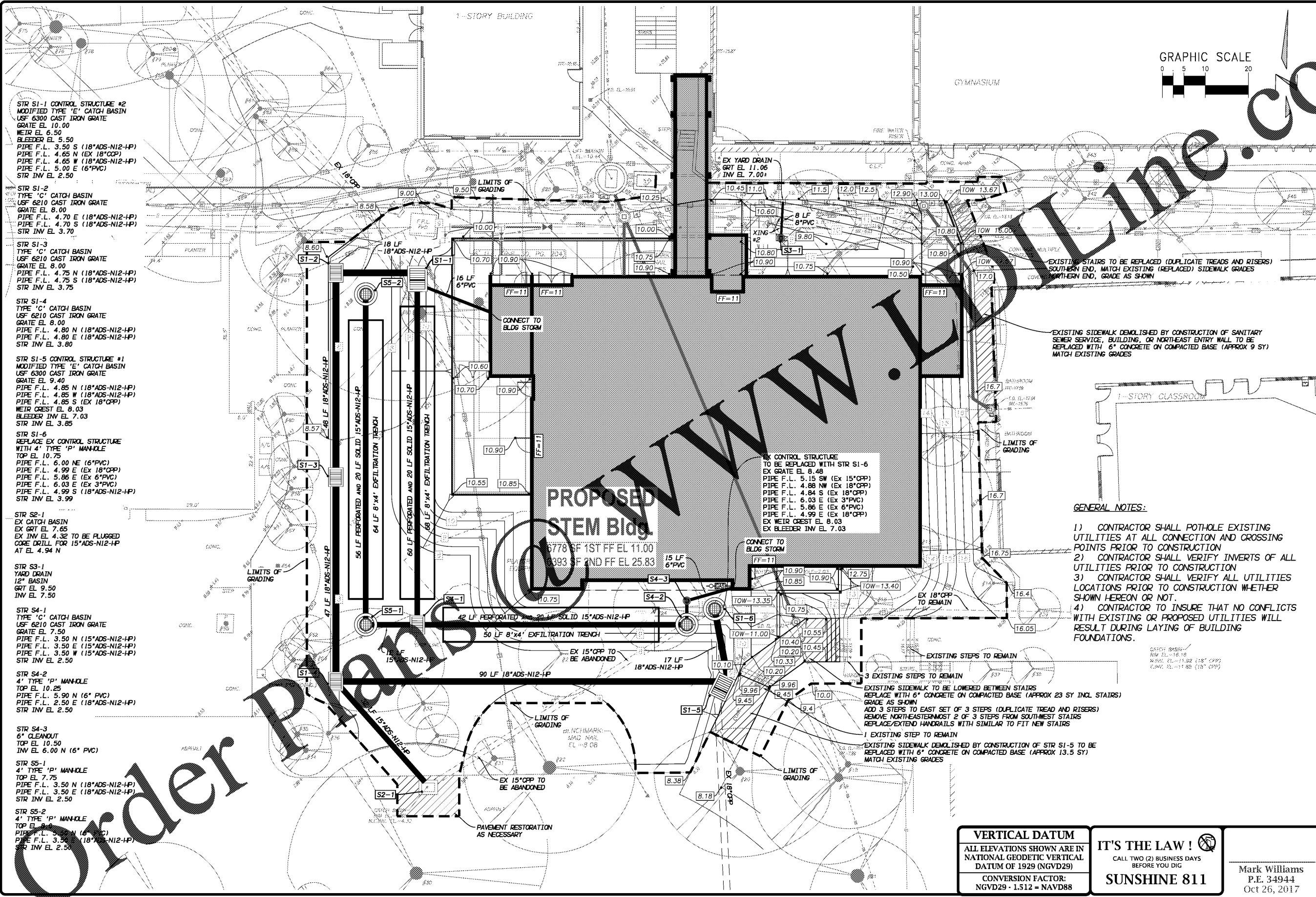


PLOT DATE: Oct 26, 2017 TIME: 3:02pm BY: agreeen
 DRAWING: P:\161147 Benjamin School STEM Bldg\KA DWG\C03_161147_PLAN-GPD.dwg LAYOUT: C03



- STR S1-1 CONTROL STRUCTURE #2
 MODIFIED TYPE 'E' CATCH BASIN
 USF 6300 CAST IRON GRATE
 GRATE EL. 10.00
 WEIR EL. 6.50
 BLEEDER EL. 5.50
 PIPE F.L. 3.50 S (18"ADS-N12-HP)
 PIPE F.L. 4.65 N (EX 18"OPP)
 PIPE F.L. 4.65 W (18"ADS-N12-HP)
 PIPE F.L. 5.00 E (6"PVC)
 STR INV EL. 2.50
- STR S1-2
 TYPE 'C' CATCH BASIN
 USF 6210 CAST IRON GRATE
 GRATE EL. 8.00
 PIPE F.L. 4.70 E (18"ADS-N12-HP)
 PIPE F.L. 4.70 S (18"ADS-N12-HP)
 STR INV EL. 3.70
- STR S1-3
 TYPE 'C' CATCH BASIN
 USF 6210 CAST IRON GRATE
 GRATE EL. 8.00
 PIPE F.L. 4.75 N (18"ADS-N12-HP)
 PIPE F.L. 4.75 S (18"ADS-N12-HP)
 STR INV EL. 3.75
- STR S1-4
 TYPE 'C' CATCH BASIN
 USF 6210 CAST IRON GRATE
 GRATE EL. 8.00
 PIPE F.L. 4.80 N (18"ADS-N12-HP)
 PIPE F.L. 4.80 E (18"ADS-N12-HP)
 STR INV EL. 3.80
- STR S1-5 CONTROL STRUCTURE #1
 MODIFIED TYPE 'E' CATCH BASIN
 USF 6300 CAST IRON GRATE
 GRATE EL. 9.40
 PIPE F.L. 4.85 N (18"ADS-N12-HP)
 PIPE F.L. 4.85 W (18"ADS-N12-HP)
 PIPE F.L. 4.85 S (EX 18"OPP)
 WEIR GRATE EL. 8.03
 BLEEDER INV EL. 7.03
 STR INV EL. 3.85
- STR S1-6
 REPLACE EX CONTROL STRUCTURE
 WITH 4" TYPE 'P' MANHOLE
 TOP EL. 10.75
 PIPE F.L. 6.00 NE (6"PVC)
 PIPE F.L. 4.99 E (EX 18"OPP)
 PIPE F.L. 5.86 E (EX 6"PVC)
 PIPE F.L. 6.03 E (EX 3"PVC)
 PIPE F.L. 4.99 S (18"ADS-N12-HP)
 STR INV EL. 3.99
- STR S2-1
 EX CATCH BASIN
 EX GRATE EL. 7.65
 EX INV EL. 4.32 TO BE PLUGGED
 CORE DRILL FOR 15"ADS-N12-HP
 AT EL. 4.94 N
- STR S3-1
 YARD DRAIN
 12" BASIN
 GRATE EL. 9.50
 INV EL. 7.50
- STR S4-1
 TYPE 'C' CATCH BASIN
 USF 6210 CAST IRON GRATE
 GRATE EL. 7.50
 PIPE F.L. 3.50 N (15"ADS-N12-HP)
 PIPE F.L. 3.50 E (15"ADS-N12-HP)
 PIPE F.L. 3.50 W (15"ADS-N12-HP)
 STR INV EL. 2.50
- STR S4-2
 4" TYPE 'P' MANHOLE
 TOP EL. 10.25
 PIPE F.L. 5.90 N (6" PVC)
 PIPE F.L. 2.50 E (18"ADS-N12-HP)
 STR INV EL. 2.50
- STR S4-3
 6" CLEANOUT
 TOP EL. 10.50
 INV EL. 6.00 N (6" PVC)
- STR S5-1
 4" TYPE 'P' MANHOLE
 TOP EL. 7.75
 PIPE F.L. 3.50 N (18"ADS-N12-HP)
 PIPE F.L. 3.50 E (18"ADS-N12-HP)
 STR INV EL. 2.50
- STR S5-2
 4" TYPE 'P' MANHOLE
 TOP EL. 7.75
 PIPE F.L. 3.50 N (18"ADS-N12-HP)
 PIPE F.L. 3.50 E (18"ADS-N12-HP)
 STR INV EL. 2.50

EXISTING STAIRS TO BE REPLACED (DUPLICATE TREADS AND RISERS)
 SOUTHERN END, MATCH EXISTING (REPLACED) SIDEWALK GRADES
 NORTHERN END, GRADE AS SHOWN

EXISTING SIDEWALK DEMOLISHED BY CONSTRUCTION OF SANITARY
 SEWER SERVICE, BUILDING, OR NORTH-EAST ENTRY WALL TO BE
 REPLACED WITH 6" CONCRETE ON COMPACTED BASE (APPROX 9 SY)
 MATCH EXISTING GRADES

- GENERAL NOTES:**
- 1) CONTRACTOR SHALL POTHOLE EXISTING UTILITIES AT ALL CONNECTION AND CROSSING POINTS PRIOR TO CONSTRUCTION
 - 2) CONTRACTOR SHALL VERIFY INVERTS OF ALL UTILITIES PRIOR TO CONSTRUCTION
 - 3) CONTRACTOR SHALL VERIFY ALL UTILITIES LOCATIONS PRIOR TO CONSTRUCTION WHETHER SHOWN HEREON OR NOT.
 - 4) CONTRACTOR TO INSURE THAT NO CONFLICTS WITH EXISTING OR PROPOSED UTILITIES WILL RESULT DURING LAYING OF BUILDING FOUNDATIONS.

VERTICAL DATUM
 ALL ELEVATIONS SHOWN ARE IN
 NATIONAL GEODETIC VERTICAL
 DATUM OF 1929 (NGVD29)
 CONVERSION FACTOR:
 NGVD29 - 1.512 = NAVD88

IT'S THE LAW!
 CALL TWO (2) BUSINESS DAYS
 BEFORE YOU DIG
SUNSHINE 811

Mark Williams
 P.E. 34944
 Oct 26, 2017

KESHAVARZ ASSOCIATES
 Civil Engineers • Landscape Architects
 711 North Dixie Highway, Suite 101
 West Palm Beach, Florida 33411
 Tel: (561) 689-8666 Fax: (561) 689-8667
 Certificate of Authorization No. 6897

No.	Date	Description

GRADING, PAVING AND DRAINAGE PLAN

BENJAMIN SCHOOL STEM BUILDING
 PALM BEACH COUNTY, FLORIDA

PROJECT No.	16-1147
SHEET No.	C03