

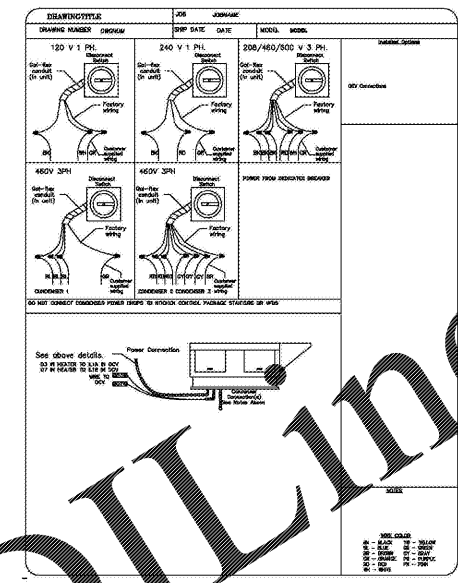
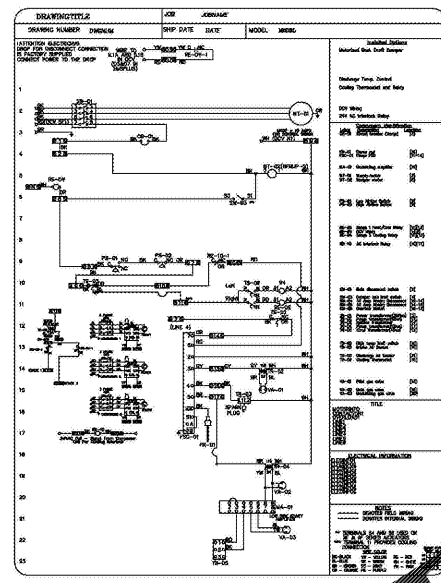
REVISIONS:

No.	Description	Date

PROJECT: 9202-169779
 DATE: 12/18
 DRAWN BY: CCO
 CHECKED BY: JCC

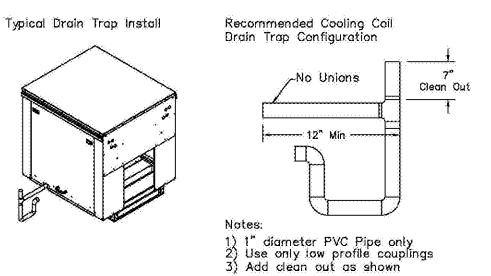
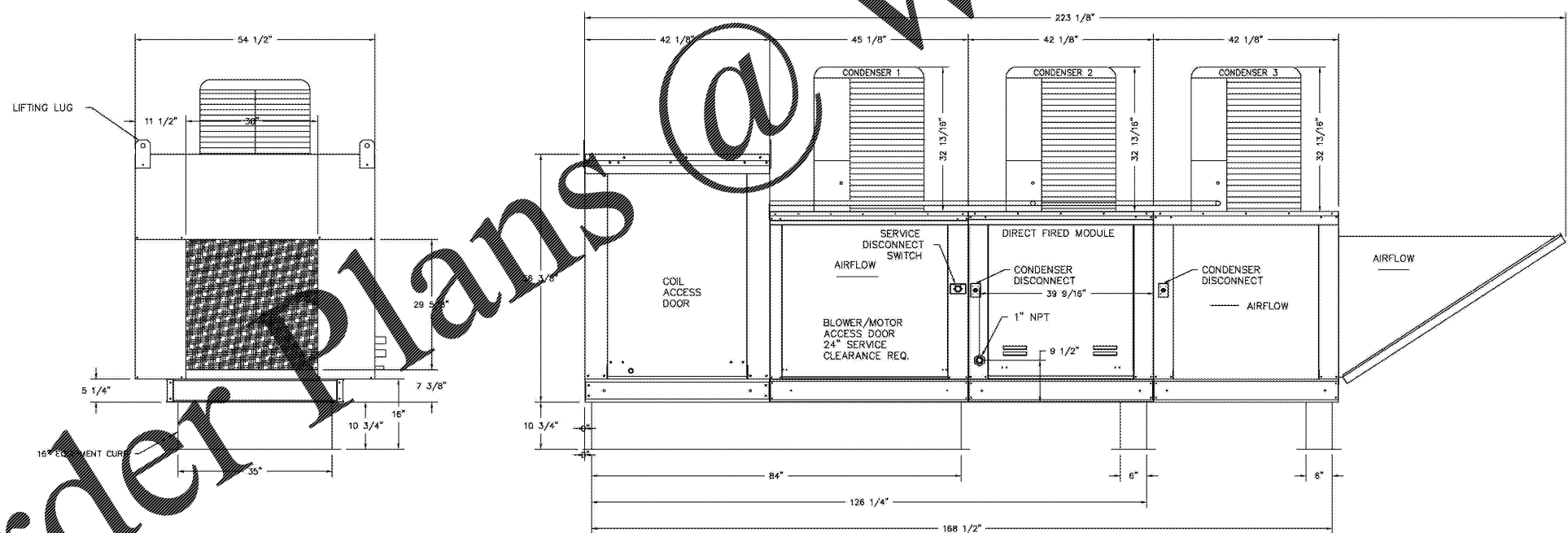
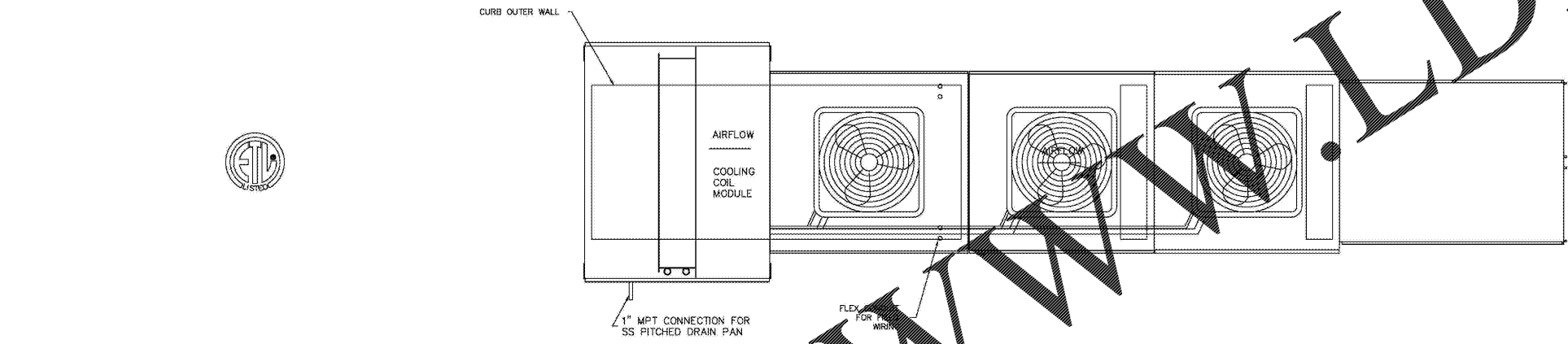
KITCHEN HOODS AND FANS

M-413



FANS #10 (#418 MUA) - A3-D-500-G18-MPU HEATER
 1. DIRECT GAS FIRED HEATED MAKE UP AIR UNIT WITH 18" BLOWER AND 12" BURNER.
 2. INTAKE HOOD WITH EZ FILTERS
 3. SIDE DISCHARGE - AIR FLOW RIGHT -> LEFT
 4. COOLING INTERLOCK RELAY, 24VAC COIL, 120V CONTACTS. LOCKS OUT BURNER CIRCUIT WHEN AC IS ENERGIZED.
 5. MOTORIZED BACK DRAFT DAMPER 30" X 30" FOR SIZE 3 STANDARD & MODULAR HEATER AND UNTEMPERED UNITS W/EXTENDED SHAFT, STANDARD GALVANIZED CONSTRUCTION, 3/4" REAR FLANGE, NPSB-S ACTUATOR INCLUDED
 6. LOW FIRE START, ALLOWS THE BURNER CIRCUIT TO ENERGIZE WHEN THE MODULATION CONTROL IS IN A LOW FIRE POSITION.
 7. GAS PRESSURE GAUGE, 0-35", 2.5" DIAMETER, 1/4" THREAD SIZE
 8. GAS PRESSURE GAUGE, -5 TO +15 INCHES WG, 2.5" DIAMETER, 1/4" THREAD SIZE
 9. 15 TON, 3 CIRCUIT (5/8/5) MODULAR PACKAGED COOLING OPTION FOR SIZE 3 MODULAR PACKAGED UNIT. INCLUDES CONDENSER, DX COIL, FILTER/DRYER KIT, HARD START KIT, THERMAL EXPANSION VALVE, R410A REFRIGERANT, AND REFRIGERANT PIPING (5,400 TO 7,000 CFM) NOT BUILT WITH OPPOSITE SIDE CONTROLS OR OPPOSITE AIRFLOW DIRECTION. CONDENSERS REQUIRE SEPARATE 460V, 3 PHASE POWER SUPPLY. COIL = 3E21002B
 10. FULL CRATING FOR COMMERCIAL HEATERS FOR SHIPPING
 11. SUPPORT SHELL FOR SIZE 3 MODULAR PACKAGE UNIT FOR THIRD CONDENSER. INCLUDES CONTROL VESTIBULE. INCLUDES CONDENSER SUPPORTS. DOES NOT INCLUDE RETURN AIR OR INLET AIR DAMPER.
 12. DX COOLING INTAKE AIR THERMOSTAT AND RELAYS MOUNTED IN UNIT - SET POINT FOR THERMOSTAT SHOULD BE 85F.
 13. SEPARATE 120VAC WIRING PACKAGE FOR MAKE-UP AIR UNITS. OPTION MUST BE SELECTED WHEN MOUNTING VFD IN FIREWIRE PANEL OR WITH DCV PACKAGE. PROVIDES SEPARATE 120VAC INPUT TO SUPPLY FAN. THIS 120V SIGNAL MUST BE RUN BY ELECTRICIAN FROM DCV TO MUA SWITCH.

SUPPLY SIDE HEATER INFORMATION:
 WINTER TEMPERATURE = 23F; TEMP. RISE = 52F.
 BTU's CALCULATED OFF STANDARD AIR DENSITY
 OUTPUT BTU's AT ALTITUDE OF 0.0 FT. = 388178
 INPUT BTU's AT ALTITUDE OF 0.0 FT. = 421933



NOTE: MECHANICAL CONTRACTOR SHALL PROVIDE AND INSTALL DUCTWORK, U.L. LISTED FIRE BLANKETS, EXHAUST FANS AND MAKEUP AIR UNITS. KITCHEN HOODS SHALL BE PROVIDED BY FOOD SERVICE EQUIPMENT CONTRACTOR.

C:\Users\shaw.MRW\Documents\17413_WILKES CC CULINARY LAB_JBWING_MP_2016_brown.rvt
 1/2/2018 1:59:10 PM

Order Plans @