



MEMBERS OF THE AMERICAN INSTITUTE OF ARCHITECTS

COPYRIGHT 2016 ALL RIGHTS RESERVED
 PRINTED OR ELECTRONIC DRAWINGS AND DOCUMENTATION MAY NOT BE REPRODUCED IN ANY FORM WITHOUT WRITTEN PERMISSION FROM LS3P ASSOCIATES LTD.

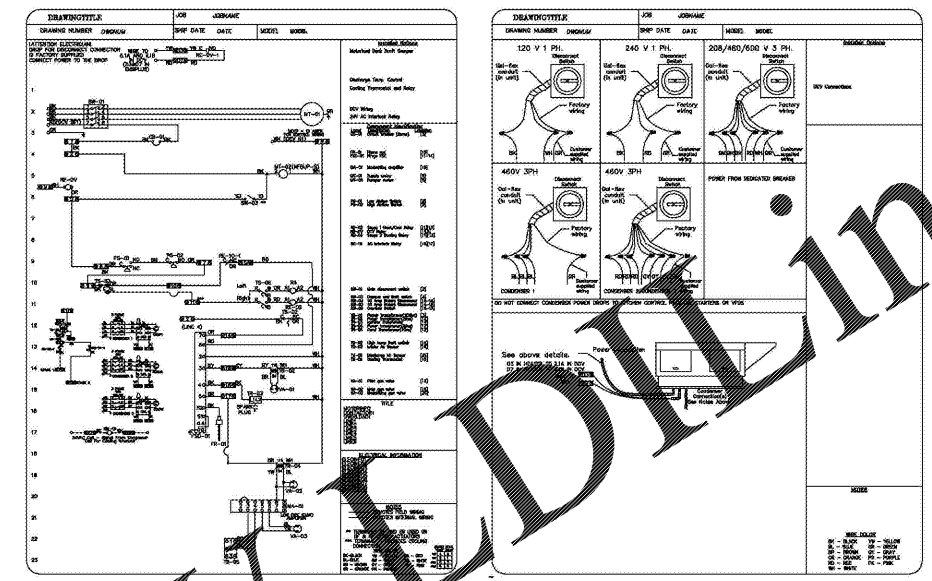
REVISIONS:

No.	Description	Date

PROJECT: 9202-169779
 DATE: 12/18
 DRAWN BY: CCO
 CHECKED BY: JCC

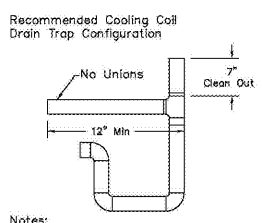
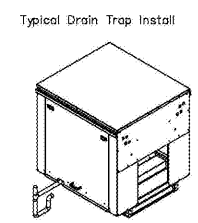
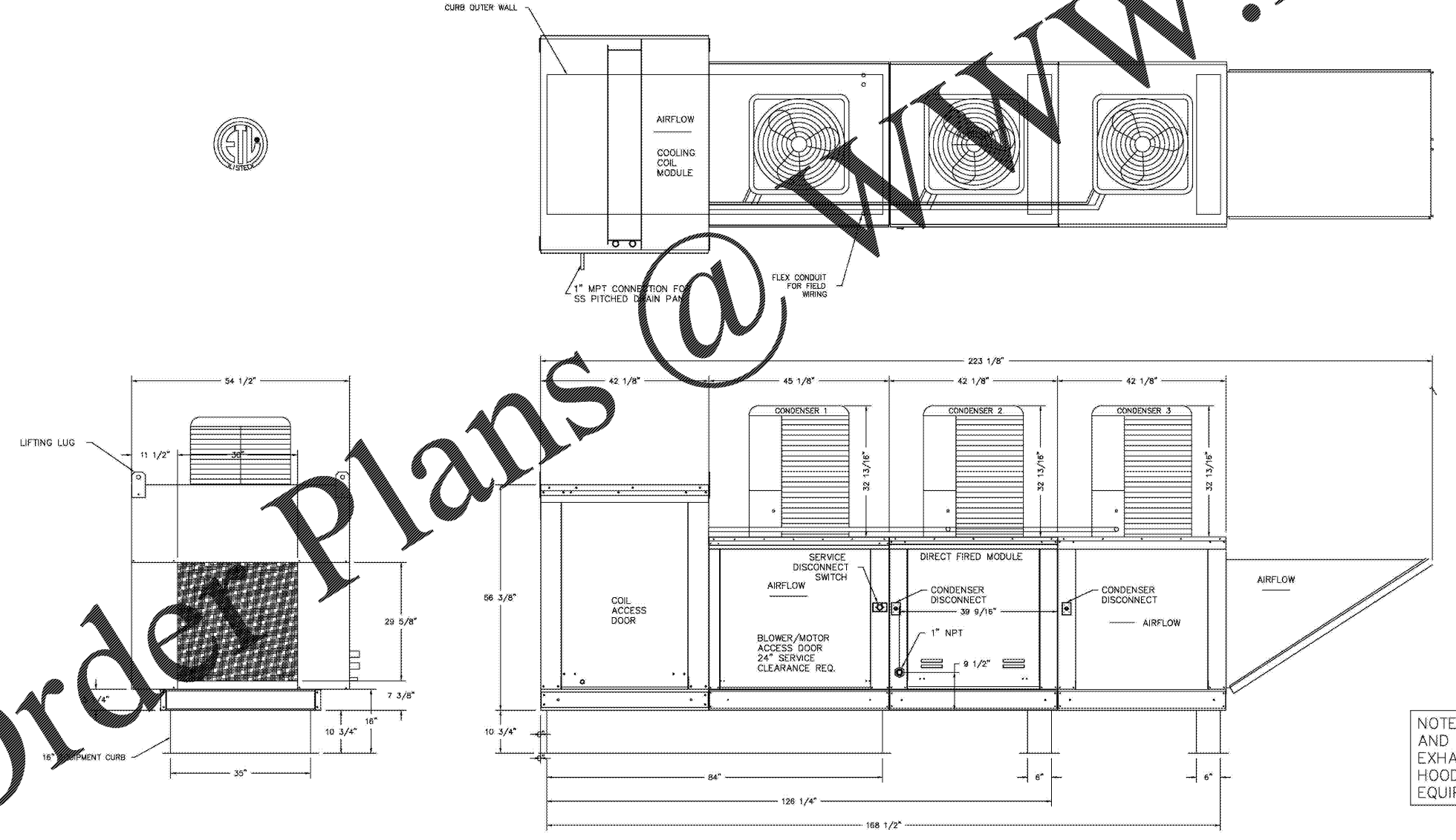
KITCHEN HOODS AND FANS

M-410



- FANS #R (#427 MUA) - A3-0.500-G18-MPU HEATER
- DIRECT GAS FIRED HEATED MAKE UP AIR UNIT WITH 18" BLOWER AND 12" BURNER.
 - INTAKE HOOD WITH EZ FILTERS
 - SIDE DISCHARGE - AIR FLOW RIGHT -> LEFT
 - COOLING INTERLOCK RELAY, 24VAC COIL, 120V CONTACTS, LOCKS OUT BURNER CIRCUIT WHEN AC IS ENERGIZED.
 - MOTORIZED BACK DRAFT DAMPER 30" X 30" FOR SIZE 3 STANDARD & MODULAR HEATER AND UNTEMPERED UNITS W/EXTENDED SHAFT, STANDARD GALVANIZED CONSTRUCTION, 3/4" REAR FLANGE, NFBSP-S ACTUATOR INCLUDED.
 - LOW FIRE START, ALLOWS THE BURNER CIRCUIT TO ENERGIZE WHEN THE MODULATION CONTROL IS IN A LOW FIRE POSITION.
 - GAS PRESSURE GAUGE, 0-35", 2.5" DIAMETER, 1/4" THREAD SIZE
 - GAS PRESSURE GAUGE, -3 TO +15 INCHES WC, 2.5" DIAMETER, 1/4" THREAD SIZE
 - 15 TON, 3 CIRCUIT (5/5/5) MODULAR PACKAGED COOLING OPTION FOR SIZE 3 MODULAR PACKAGED UNIT. INCLUDES CONDENSER, DX COIL, FILTER/DRYER KIT, HARD START KIT, THERMAL EXPANSION VALVE, R410A REFRIGERANT, AND REFRIGERANT PIPING. (5,400 TO 7,000 CFM). NOT BUILT WITH OPPOSITE SIDE CONTROLS OR OPPOSITE AIRFLOW DIRECTION. CONDENSERS REQUIRE SEPARATE 480V, 3 PHASE POWER SUPPLY. COIL = 3E21002B
 - FULL GRATING FOR COMMERCIAL HEATERS FOR SHIPPING.
 - SUPPORT SHELL FOR SIZE 3 MODULAR PACKAGE UNIT FOR THIRD CONDENSER. INCLUDES CONTROL VESTIBULE. INCLUDES CONDENSER SUPPORTS. DOES NOT INCLUDE RETURN AIR OR INLET AIR DAMPER.
 - DX COOLING INTAKE AIR THERMOSTAT AND RELAYS MOUNTED IN UNIT - SET POINT FOR THERMOSTAT SHOULD BE 85F.
 - SEPARATE 120VAC WIRING PACKAGE FOR MAKE-UP AIR UNITS. OPTION MUST BE SELECTED WHEN MOUNTING MFD IN PREWIRED PANEL OR WITH DCV PACKAGE. PROVIDES SEPARATE 120VAC INPUT TO SUPPLY FAN. THIS 120V SIGNAL MUST BE RUN BY ELECTRICIAN FROM DCV TO MUA SWITCH.

SUPPLY SIDE HEATER INFORMATION:
 WINTER TEMPERATURE - 23F; TEMP. RISE - 52F.
 BTUs CALCULATED OFF STANDARD AIR DENSITY
 OUTPUT BTUs AT ALTITUDE OF 0.0 ft. = 388176
 INPUT BTUs AT ALTITUDE OF 0.0 ft. = 421933



- Notes:
- 1" diameter PVC Pipe only
 - Use only low profile couplings
 - Add clean out as shown

NOTE: MECHANICAL CONTRACTOR SHALL PROVIDE AND INSTALL DUCTWORK, U.L. LISTED FIRE BLANKETS, EXHAUST FANS AND MAKEUP AIR UNITS. KITCHEN HOODS SHALL BE PROVIDED BY FOOD SERVICE EQUIPMENT CONTRACTOR.

C:\Users\jmw\My Documents\17413_WILKES CC CULINARY LAB_JBW\DWG_MBP_2016_brown.rvt
 1/2/2018 1:58:09 PM

Order Plans @