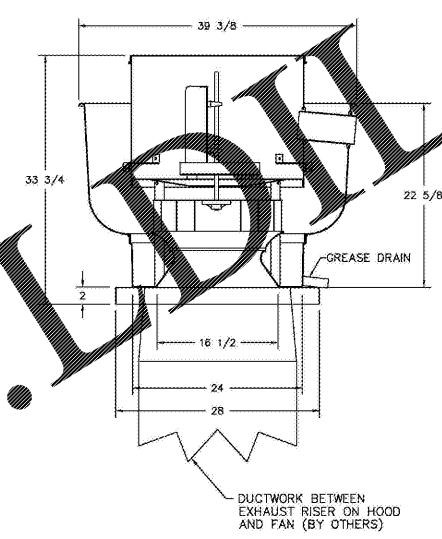
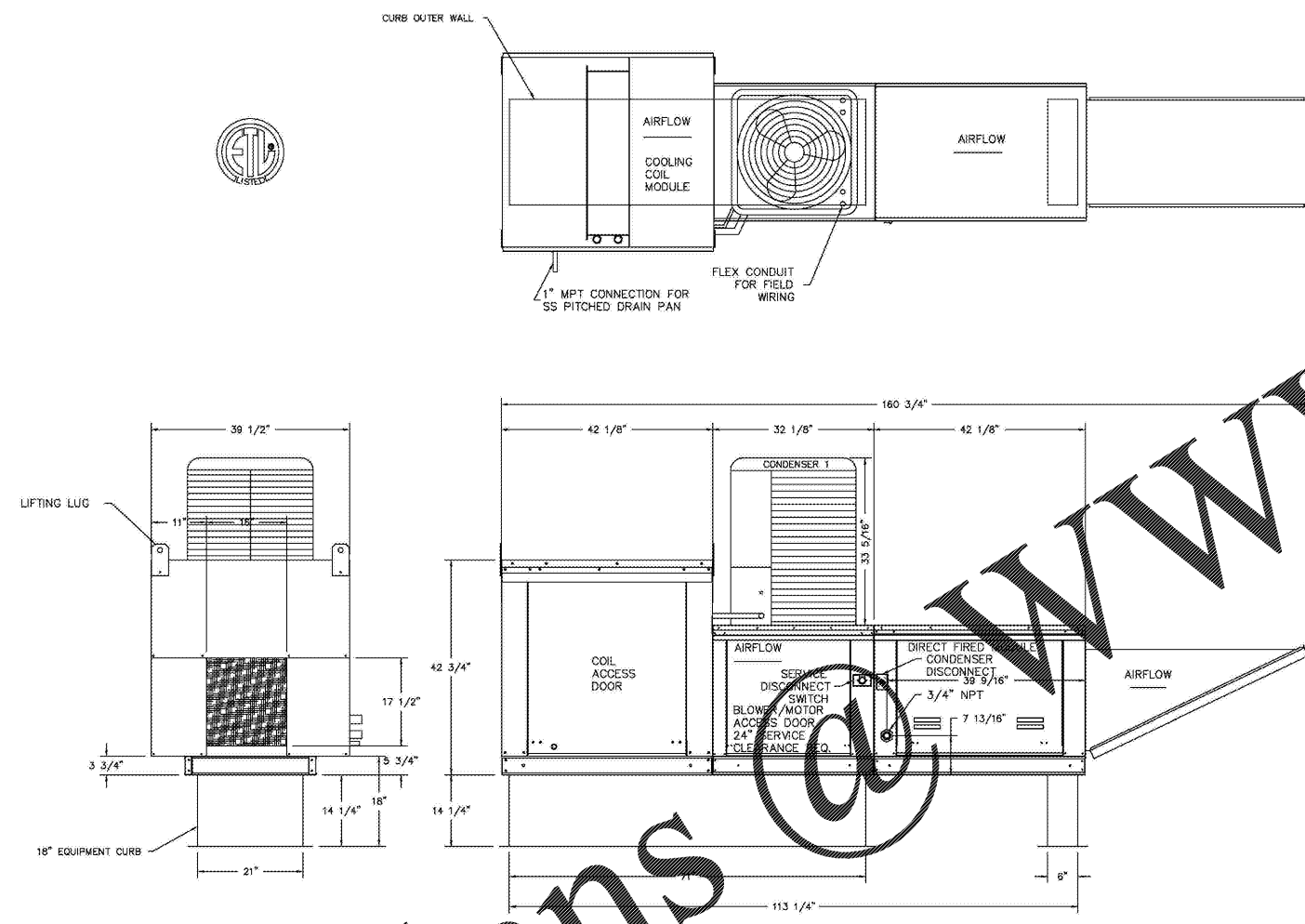


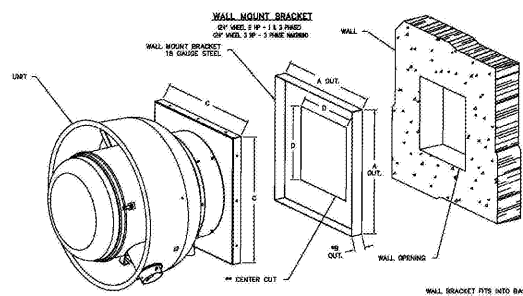
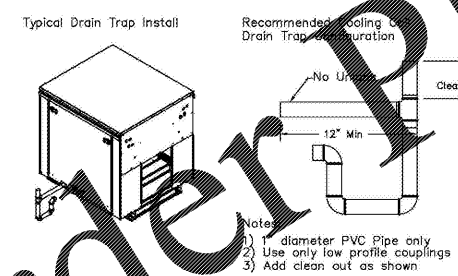
- FAN #2 A1-D.250-G10-MPU - HEATER (#112 MUA)
- DIRECT GAS FIRED HEATED MAKE UP AIR UNIT WITH 10" BLOWER
 - INTAKE HOOD WITH EZ FILTERS
 - SIDE DISCHARGE - AIR FLOW RIGHT -> LEFT
 - COOLING INTERLOCK RELAY, 24VAC COIL - 120V CONTACTS. LOCKS OUT BURNER CIRCUIT WHEN AC IS ENERGIZED.
 - MOTORIZED BACK DRAFT DAMPER 16" X 18" FOR SIZE 1 STANDARD & MODULAR HEATER AND UNTEMPERED UNITS W/EXTENDED SHAFT, STANDARD GALVANIZED CONSTRUCTION, 3/4" REAR FLANGE, TFB120S ACTUATOR INCLUDED
 - LOW FIRE START. ALLOWS THE BURNER CIRCUIT TO ENERGIZE WHEN THE MODULATION CONTROL IS IN A LOW FIRE POSITION.
 - GAS PRESSURE GAUGE, 0-35", 2.5" DIAMETER, 1/4" THREAD SIZE
 - GAS PRESSURE GAUGE, -5 TO +15 INCHES WC, 2.5" DIAMETER, 1/4" THREAD SIZE
 - SEPARATE 120VAC WIRING PACKAGE FOR MAKE-UP AIR UNITS. OPTION MUST BE SELECTED WHEN MOUNTING VFD IN PREWIRE PANEL OR WITH DCV PACKAGE. PROVIDES SEPARATE 120VAC INPUT TO SUPPLY FAN. THIS 120V SIGNAL MUST BE RUN BY ELECTRICIAN FROM DCV TO MUA SWITCH.
 - DX COOLING INTAKE AIR THERMOSTAT AND RELAYS MOUNTED IN UNIT - SET POINT FOR THERMOSTAT SHOULD BE 85F.
 - 3 TON, SINGLE CIRCUIT MODULAR PACKAGED COOLING OPTION FOR SIZE 1 MODULAR PACKAGE UNIT. INCLUDES CONDENSER, DX COIL, FILTER/DRYER KIT, THERMAL EXPANSION VALVE, R410A REFRIGERANT, AND REFRIGERANT PIPING. (1,100 TO 1,800 CFM) NOT BUILT WITH OPPOSITE SIDE CONTROLS OR OPPOSITE AIRFLOW DIRECTION. CONDENSERS REQUIRE SEPARATE 480V, 3 PHASE POWER SUPPLY. COIL = ZE1000IN
 - FULL CRATING FOR COMMERCIAL HEATERS FOR SHIPPING.

SUPPLY SIDE HEATER INFORMATION:
 WINTER TEMPERATURE = 23F, TEMP. RISE = 52F.
 BTU_s CALCULATED OFF STANDARD AIR DENSITY
 OUTPUT BTU_s AT ALTITUDE OF 0.0 FT. = 84914
 INPUT BTU_s AT ALTITUDE OF 0.0 FT. = 92398

FAN #1 NCA16HFA - EXHAUST FAN (#112 EF)



- FEATURES:**
- ROOF MOUNTED FAN RESTAURANT MODEL
 - UL LISTED
 - UL LISTED SOUND AND AIR CERTIFIED
 - WIRING FROM MOTOR TO DISCONNECT SWITCH
 - WEATHERPROOF DISCONNECT
 - HIGH HEAT OPERATION 300F (149C)
 - GREASE CLASSIFICATION TESTING
- NORMAL TEMPERATURE TEST**
 EXHAUST FAN MUST OPERATE CONTINUOUSLY WHILE EXHAUSTING AIR AT 300F (149C) UNTIL ALL FAN PARTS HAVE REACHED THERMAL EQUILIBRIUM, AND WITHOUT ANY DETERIORATING EFFECTS TO THE FAN WHICH WOULD CAUSE UNSAFE OPERATION.
- ABNORMAL FLARE-UP TEST**
 EXHAUST FAN MUST OPERATE CONTINUOUSLY WHILE EXHAUSTING BURNING GREASE VAPORS AT 600F (316C) FOR A PERIOD OF 15 MINUTES WITHOUT THE FAN BECOMING DAMAGED TO ANY EXTENT THAT COULD CAUSE AN UNSAFE CONDITION.
- OPTIONS**
 GREASE BOX



A	B	C	D
18 1/2	2	19	13
20 1/2	2	21	18
21 1/2	2	22	18
24 1/4	2	24 3/4	20
25 1/2	2	26	20
27 1/2	2	28	24
28 1/2	2	33	28

WALL BRACKET FITS INTO BASE OF FAN
 SELF DRILLING SCREWS SHOULD BE USED FOR UNIT ATTACHMENT TO WALL MOUNT BRACKET
 * 1/2" DIMENSION = 6" WHEN USED WITH DAMPER
 ** CUSTOMER TO WALL MOUNT

NOTE: MECHANICAL CONTRACTOR SHALL PROVIDE AND INSTALL DUCTWORK, U.L. LISTED FIRE BLANKETS, EXHAUST FANS AND MAKEUP AIR UNITS. KITCHEN HOODS SHALL BE PROVIDED BY FOOD SERVICE EQUIPMENT CONTRACTOR.

McKNIGHT · SMITH
 WARD · GRIFFIN
 ENGINEERS, INCORPORATED
 PO Box 240728 · 4223 South Boulevard
 Charlotte, NC 28224
 704.333.2112 17-013

LS3P

227 WEST TRADE STREET SUITE 700
 CHARLOTTE, NORTH CAROLINA 28202
 TEL. 704.333.8686 FAX 704.333.2926
 WWW.LS3P.COM



MEMBERS OF THE AMERICAN INSTITUTE OF ARCHITECTS

COPYRIGHT 2016 ALL RIGHTS RESERVED
 PRINTED OR ELECTRONIC DRAWINGS AND DOCUMENTATION MAY NOT BE REPRODUCED IN ANY FORM WITHOUT WRITTEN PERMISSION FROM LS3P ASSOCIATES LTD.

REVISIONS:

No.	Description	Date

PROJECT: 9202-16979
 DATE: 12/18
 DRAWN BY: CCO
 CHECKED BY: JCC

KITCHEN HOODS AND FANS
M-407