



MEMBERS OF THE AMERICAN INSTITUTE OF ARCHITECTS

COPYRIGHT 2016 ALL RIGHTS RESERVED
 PRINTED OR ELECTRONIC DRAWINGS AND DOCUMENTATION MAY NOT BE REPRODUCED IN ANY FORM WITHOUT WRITTEN PERMISSION FROM LS3P ASSOCIATES LTD.

REVISIONS:

No.	Description	Date

PROJECT: 9202-169779
 DATE: 12/18
 DRAWN BY: CCO
 CHECKED BY: JCC

KITCHEN HOODS AND FANS

M-406

EXHAUST FAN INFORMATION - Job#3075812

FAN UNIT NO.	TAG	FAN UNIT MODEL #	CFM	ESP.	RPM	H.P.	BL.P.	#	VOLT.	FLA	WEIGHT (LBS.)	SONES
1	#112 EF	NCA16HFFA	1680	1.250	1118	1.000	0.6398	3	460	1.5	147	10
3	#221 EF	DJ18DFFA	2000	1.600	1206	2.000	0.8410	3	208	6.1	156	15.4
5	#402 EF	NCA24HFFA	4868	2.000	1180	5.000	2.7100	3	460	6.8	297	21
7	#427 EF	NCA30HFFA	7680	1.800	877	5.000	3.8290	3	460	6.8	469	16.6
9	#418 EF	NCA30HFFA	7680	1.800	877	5.000	3.8290	3	460	6.8	469	16.6

CONDENSER DETAILS

FAN UNIT NO.	TAG	FAN UNIT MODEL #	CONDENSER NO.	TONNAGE	VOLTAGE	PHASE	FREQUENCY	MCA	RLA	MAX. FUSE SIZE	MIN. WIRE SIZE	SEER
2	#112 MUA	A1-D.250-G10-MPU	1	3	460	3 PHASE	60 Hz	7.7 Amps	6.3 Amps	15 Amps	14 AWG	14
4	#221 MUA	A1-D.250-G10-MPU	1	3	460	3 PHASE	60 Hz	7.7 Amps	6.3 Amps	15 Amps	14 AWG	14
6	#402 MUA	A2-D.250-G15-MPU	2	5	460	3 PHASE	60 Hz	10.5 Amps	8.5 Amps	15 Amps	14 AWG	14
5	#427 MUA	A3-D.500-G18-MPU	1	5	460	3 PHASE	60 Hz	10.5 Amps	8.5 Amps	15 Amps	14 AWG	14
			2	5	460	3 PHASE	60 Hz	10.5 Amps	8.5 Amps	15 Amps	14 AWG	14
			3	5	460	3 PHASE	60 Hz	10.5 Amps	8.5 Amps	15 Amps	14 AWG	14
10	#418 MUA	A3-D.500-G18-MPU	1	5	460	3 PHASE	60 Hz	10.5 Amps	8.5 Amps	15 Amps	14 AWG	14
			2	5	460	3 PHASE	60 Hz	10.5 Amps	8.5 Amps	15 Amps	14 AWG	14
			3	5	460	3 PHASE	60 Hz	10.5 Amps	8.5 Amps	15 Amps	14 AWG	14

MUA FAN INFORMATION - Job#3075812

FAN UNIT NO.	TAG	FAN UNIT MODEL #	BLOWER HOUSING	MIN CFM	DESIGN CFM	ESP.	RPM	H.P.	BL.P.	#	VOLT.	FLA	COOLING COIL ENTERING DB TEMP.	COOLING COIL LEAVING DB TEMP.	COOLING COIL LATENT CAPACITY	COOLING COIL SENSIBLE CAPACITY	COOLING COIL LATENT CAPACITY	WEIGHT (LBS.)	SONES	BURNER EFFICIENCY(%)			
2	#112 MUA	A1-D.250-G10-MPU	G10	A1-D.250	1000	1512	0.500	999	0.750	0.5222	3	460	1.1	90.0F	73.0F	77.0F	67.9F	30.1 MBH	21.3 MBH	8.8 MBH	1171	18.1	92
4	#221 MUA	A1-D.250-G10-MPU	G10	A1-D.250	1000	1800	0.500	1086	1.000	0.7380	3	460	1.5	90.0F	73.0F	78.1F	68.3F	33.2 MBH	23.2 MBH	10.0 MBH	1173	18.5	92
6	#402 MUA	A2-D.250-G15-MPU	G15-PB	A2-D.250	2500	4381	0.500	1074	5.000	3.1010	3	460	8.8	90.0F	73.0F	75.5F	58.1F	82.7 MBH	68.8 MBH	13.9 MBH	1699	21	92
8	#427 MUA	A3-D.500-G18-MPU	G18-PB	A3-D.500	3500	6912	0.500	907	7.500	4.4530	3	460	9.6	90.0F	73.0F	74.2F	66.6F	167.6 MBH	118.3 MBH	49.3 MBH	2449	17.2	92
10	#418 MUA	A3-D.500-G18-MPU	G18-PB	A3-D.500	3500	6912	0.500	907	7.500	4.4530	3	460	9.6	90.0F	73.0F	74.2F	66.6F	167.6 MBH	118.3 MBH	49.3 MBH	2449	17.2	92

GAS FIRED MAKE-UP AIR UNIT(S)

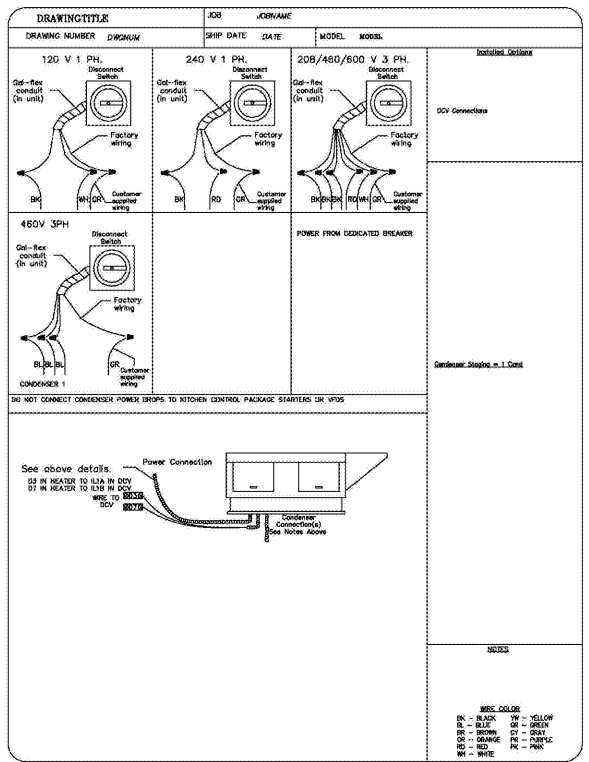
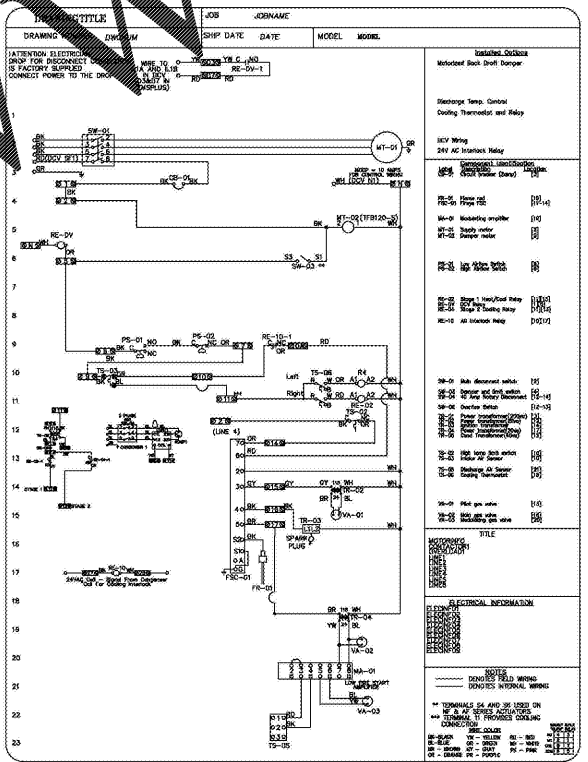
FAN UNIT NO.	TAG	INPUT BTUs	OUTPUT BTUs	TEMP. RISE	REQUIRED INPUT GAS PRESSURE	GAS TYPE
2	#112 MUA	92298	84914	52 deg F	7 in. w.c. - 14 in. w.c.	Natural
4	#221 MUA	109878	101058	52 deg F	7 in. w.c. - 14 in. w.c.	Natural
6	#402 MUA	267432	246037	52 deg F	7 in. w.c. - 14 in. w.c.	Natural
8	#427 MUA	421953	386176	52 deg F	7 in. w.c. - 14 in. w.c.	Natural
10	#418 MUA	421953	386176	52 deg F	7 in. w.c. - 14 in. w.c.	Natural

FAN ACCESSORIES

FAN UNIT NO.	TAG	EXHAUST			SUPPLY		
		GREASE CUP	GRAVITY DAMPER	WALL DISCHARGE	GRAVITY DAMPER	MOTORIZED DAMPER	WALL MOUNT
1	#112 EF	YES				YES	
2	#112 MUA			YES		YES	
3	#221 EF	YES				YES	
4	#221 MUA			YES		YES	
5	#402 EF	YES				YES	
6	#402 MUA			YES		YES	
7	#427 EF	YES				YES	
8	#427 MUA			YES		YES	
9	#418 EF	YES				YES	
10	#418 MUA			YES		YES	

FAN OPTIONS

FAN UNIT NO.	TAG	OPTION (Qty. - Descr.)
1	#112 EF	1 - Grease Box
		1 - AC Interlock Relay - 24VAC Coil
		1 - Motorized Backdraft Damper for A1-D Housing
		1 - Low Fire Start
2	#112 MUA	1 - Inlet Pressure Gauge, 0-35"
		1 - Manifold Pressure Gauge, -5 to 15" wc
		1 - Separate 120V Wiring Package (Required and used only for DCV or Prewire with VFD) - Three Phase Only
		1 - Cooling Thermostat and Relay (Not req for evap)
3	#221 EF	1 - Grease Box
		1 - AC Interlock Relay - 24VAC Coil
		1 - Motorized Backdraft Damper for A1-D Housing
		1 - Low Fire Start
4	#221 MUA	1 - Inlet Pressure Gauge, 0-35"
		1 - Manifold Pressure Gauge, -5 to 15" wc
		1 - Cooling Thermostat and Relay (Not req for evap)
		1 - 3 Ton Single Circuit Modular Packaged Cooling Option for Size 1 MUA (1,100 to 1,800 cfm), 460V, 3 phase. Cooling Thermostat or Programmable Start Required for Proper Operation.
5	#402 EF	1 - Grease Box
		1 - AC Interlock Relay - 24VAC Coil
		1 - Motorized Backdraft Damper for A2-D Housing
		1 - Low Fire Start
6	#402 MUA	1 - Inlet Pressure Gauge, 0-35"
		1 - Manifold Pressure Gauge, -5 to 15" wc
		1 - Separate 120V Wiring Package (Required and used only for DCV or Prewire with VFD) - Three Phase Only
		1 - 8 Ton 2 Circuit (1/3) Modular Packaged Cooling Option for Size 2 MUA (2,900 to 4,800 cfm), 460V, 3 phase. Cooling Thermostat or Programmable Start Required for Proper Operation.
7	#427 EF	1 - Grease Box
		1 - AC Interlock Relay - 24VAC Coil
		1 - Motorized Backdraft Damper for A3-D Housing
		1 - Low Fire Start
8	#427 MUA	1 - Inlet Pressure Gauge, 0-35"
		1 - Manifold Pressure Gauge, -5 to 15" wc
		1 - 15 Ton 3 Circuit (1/3) Modular Packaged Cooling Option (5,400 to 7,000 cfm), 460V, 3 phase. Cooling Thermostat or Programmable Start Required for Proper Operation.
		1 - Full Crating For Commercial Heater
9	#418 EF	1 - Grease Box
		1 - AC Interlock Relay - 24VAC Coil
		1 - Motorized Backdraft Damper for A3-D Housing
		1 - Low Fire Start
10	#418 MUA	1 - Inlet Pressure Gauge, 0-35"
		1 - Manifold Pressure Gauge, -5 to 15" wc
		1 - 15 Ton 3 Circuit (1/3) Modular Packaged Cooling Option for Size 3 MUA (7,000 to 10,000 cfm), 460V, 3 phase. Cooling Thermostat or Programmable Start Required for Proper Operation.
		1 - Condenser Support for Size 3, 15 Ton Mod Package Unit



NOTE: MECHANICAL CONTRACTOR SHALL PROVIDE AND INSTALL DUCTWORK, U.L. LISTED FIRE BLANKETS, EXHAUST FANS AND MAKEUP AIR UNITS. KITCHEN HOODS SHALL BE PROVIDED BY FOOD SERVICE EQUIPMENT CONTRACTOR.