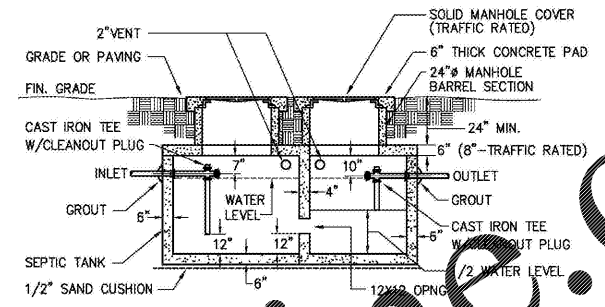


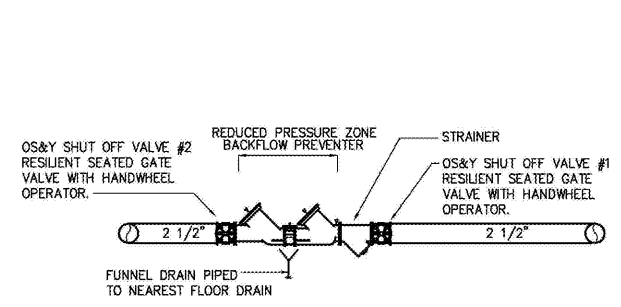
Unit Tag	Capacity				Flue Size	Recirc Pump	Burner Data			Expansion Tank	Location	Model	Remarks	Detail
	Input (MBH)	Recovery (GPH)	Tank Volume (Gallons)	Temp. Rise (F)			HP	Vol	Phase					
GWH-1	150	178	100	100	NT.4	Yes	-	-	-	Yes	Mech. Rm.	A.O. Smith BTH-150	1,2,3,4	2/P101
GWH-2	150	178	100	100	NT.4	Yes	-	-	-	Yes	Mech. Rm.	A.O. Smith BTH-150	1,2,3,4	2/P101

- EQUALS BY STATE, RHEEM, A.O. SMITH, PVA, PRECISION
- RECIRCULATION PUMPS ARE BELL & GOSSET NBF-22, 92 WATTS, 115V/1-PH, ALL BRONZE; EQUALS BY AURUORA, GRUNDFOS
- EXPANSION TANKS ARE AMTROL OR EQUALS BY STATE, TACO; SEE PLANS FOR SIZE
- TYPE & SIZE OF FLUE PIPING PER MFG. RECOMMENDATIONS

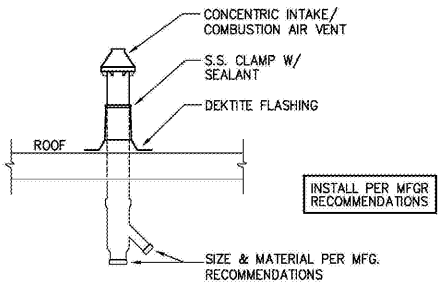


1 GREASE INTERCEPTOR DETAIL
 P101 NTS (2000 GALLON TANK AS SHOWN BY STAY-RIGHT PRECAST CONCRETE OR EQUAL)

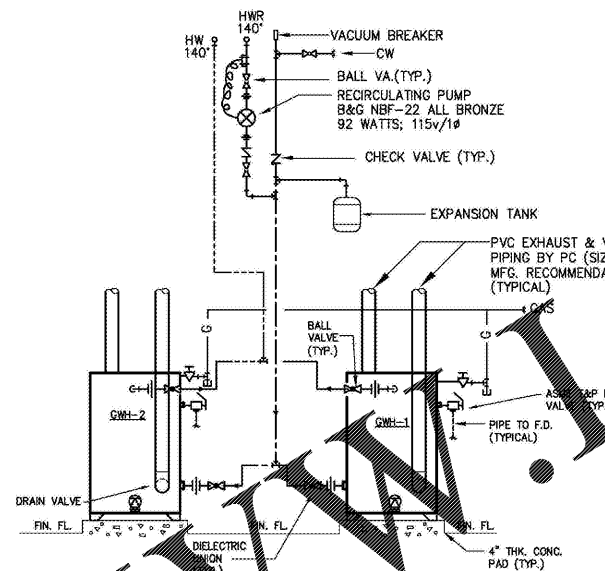
- GREASE INTERCEPTOR NOTES:
- A. INTERIOR BAFFLES SHALL DISTRIBUTE FLOWS. BAFFLES SHALL EXTEND SIX (6) INCHES ABOVE WATER LINE BUT SHALL NOT FLOOD THE INLET PIPE.
 - B. MINIMUM 2\"/>



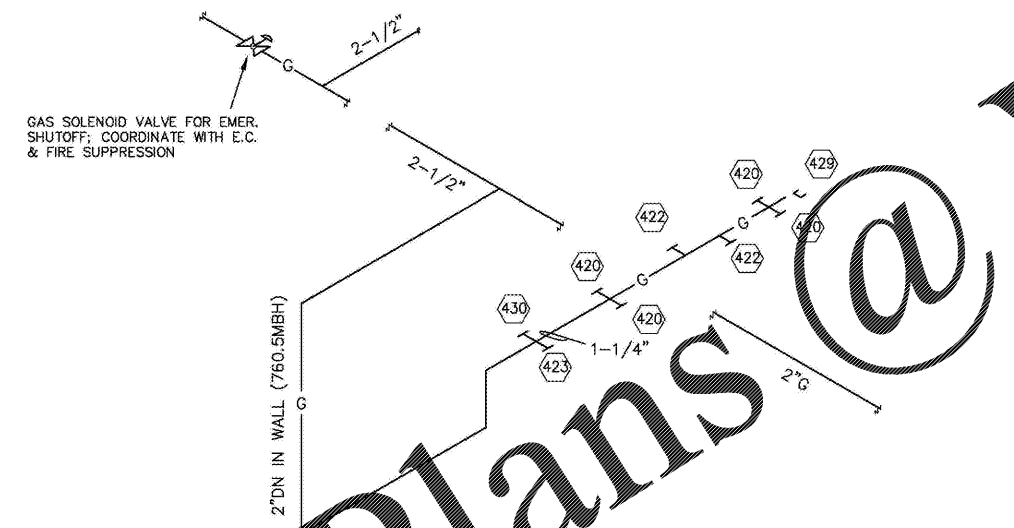
4 RPZ DETAIL
 P101 NTS



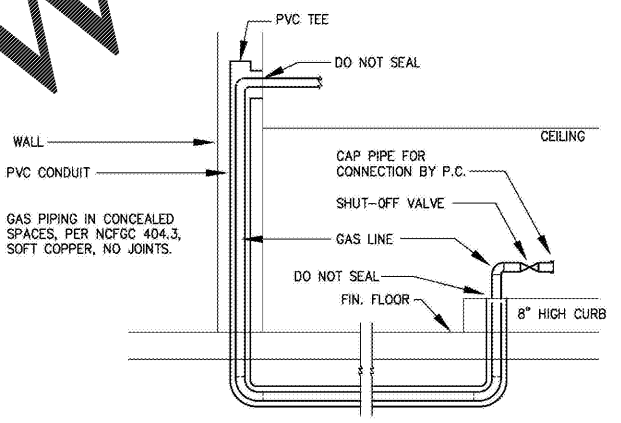
3 CONCENTRIC VENT THRU ROOF DETAIL
 P101 NTS NOTE: VENT SHALL BE SIMILAR IN APPEARANCE TO DETAIL.



2 WATER HEATERS DETAIL
 P101 NTS



6 PARTIAL GAS PIPING SCHEMATIC
 P101 NTS (TYPICAL 2 LOCATIONS)



5 GAS PIPING BELOW SLAB
 P101 NTS

McKNIGHT · SMITH
 WARD · GRIFFIN
 ENGINEERS, INCORPORATED
 2707 South Blvd.
 Charlotte, NC 28202
 704.333.6698 FAX 704.333.2926
 704.767.2112 17-013



227 WEST TRADE STREET SUITE 700
 CHARLOTTE, NORTH CAROLINA 28202
 TEL. 704.333.6698 FAX 704.333.2926
 WWW.LS3P.COM



MEMBERS OF THE AMERICAN INSTITUTE OF ARCHITECTS

COPYRIGHT 2016 ALL RIGHTS RESERVED
 PRINTED OR ELECTRONIC DRAWINGS AND DOCUMENTATION MAY NOT BE REPRODUCED IN ANY FORM WITHOUT WRITTEN PERMISSION FROM LS3P ASSOCIATES LTD.

REVISIONS:

No.	Description	Date

PROJECT: 9202-169779
 DATE: 12/18
 DRAWN BY: CDT
 CHECKED BY: JCC

PLUMBING
 DETAILS

P-101