



MEMBERS OF THE AMERICAN INSTITUTE OF ARCHITECTS

COPYRIGHT 2016 ALL RIGHTS RESERVED
 PRINTED OR ELECTRONIC DRAWINGS AND DOCUMENTATION MAY NOT BE REPRODUCED IN ANY FORM WITHOUT WRITTEN PERMISSION FROM LS3P ASSOCIATES LTD.

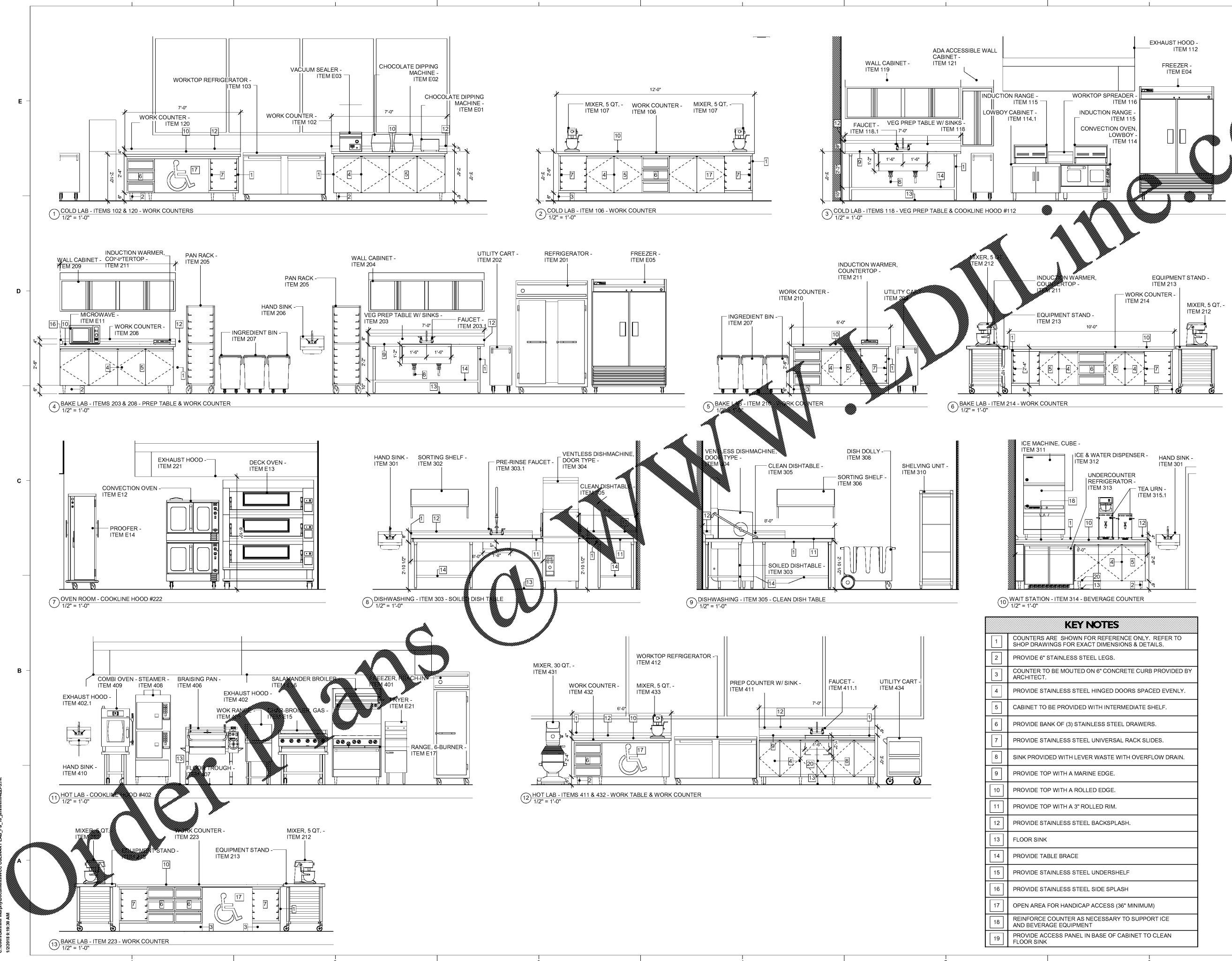
REVISIONS:

No.	Description	Date
1	Revision 1	Date 1

PROJECT: 5202-169770
 DATE: January 2, 2016
 DRAWN BY: JM
 CHECKED BY: AC

FOODSERVICE ELEVATIONS

QF600



KEY NOTES

1	COUNTERS ARE SHOWN FOR REFERENCE ONLY. REFER TO SHOP DRAWINGS FOR EXACT DIMENSIONS & DETAILS.
2	PROVIDE 6" STAINLESS STEEL LEGS.
3	COUNTER TO BE MOUNTED ON 6" CONCRETE CURB PROVIDED BY ARCHITECT.
4	PROVIDE STAINLESS STEEL HINGED DOORS SPACED EVENLY.
5	CABINET TO BE PROVIDED WITH INTERMEDIATE SHELF.
6	PROVIDE BANK OF (3) STAINLESS STEEL DRAWERS.
7	PROVIDE STAINLESS STEEL UNIVERSAL RACK SLIDES.
8	SINK PROVIDED WITH LEVER WASTE WITH OVERFLOW DRAIN.
9	PROVIDE TOP WITH A MARINE EDGE.
10	PROVIDE TOP WITH A ROLLED EDGE.
11	PROVIDE TOP WITH A 3" ROLLED RIM.
12	PROVIDE STAINLESS STEEL BACKSPLASH.
13	FLOOR SINK
14	PROVIDE TABLE BRACE
15	PROVIDE STAINLESS STEEL UNDERSHELF
16	PROVIDE STAINLESS STEEL SIDE SPLASH
17	OPEN AREA FOR HANDICAP ACCESS (36" MINIMUM)
18	REINFORCE COUNTER AS NECESSARY TO SUPPORT ICE AND BEVERAGE EQUIPMENT
19	PROVIDE ACCESS PANEL IN BASE OF CABINET TO CLEAN FLOOR SINK

C:\Users\Jennifer.Murphy\Documents\WCC_CULINARY LAB_F5_16_16\item02E2L1.rvt
 1/2/2016 8:16:30 AM

Order Plans