

WILKES COMMUNITY COLLEGE
 WILKES COMMUNITY COLLEGE
 SCO# 1600-01
 NCCS# 223
 CULINARY LAB

camacho
 ATLANTA + CHARLOTTE + EXFALBA
 6735 Peachtree Industrial Blvd.
 Atlanta, Georgia, 30360
 770.582.1144 Voice 700.582.1009 Fax
 www.CamachoUSA.com

LS3P

227 WEST TRADE STREET SUITE 700
 CHARLOTTE, NORTH CAROLINA 28202
 TEL. 704.333.6666 FAX 704.333.2926
 WWW.LS3P.COM



MEMBERS OF THE AMERICAN INSTITUTE OF ARCHITECTS

COPYRIGHT 2016 ALL RIGHTS RESERVED
 PRINTED OR ELECTRONIC DRAWINGS AND DOCUMENTATION MAY NOT BE REPRODUCED IN ANY FORM WITHOUT WRITTEN PERMISSION FROM LS3P ASSOCIATES LTD.

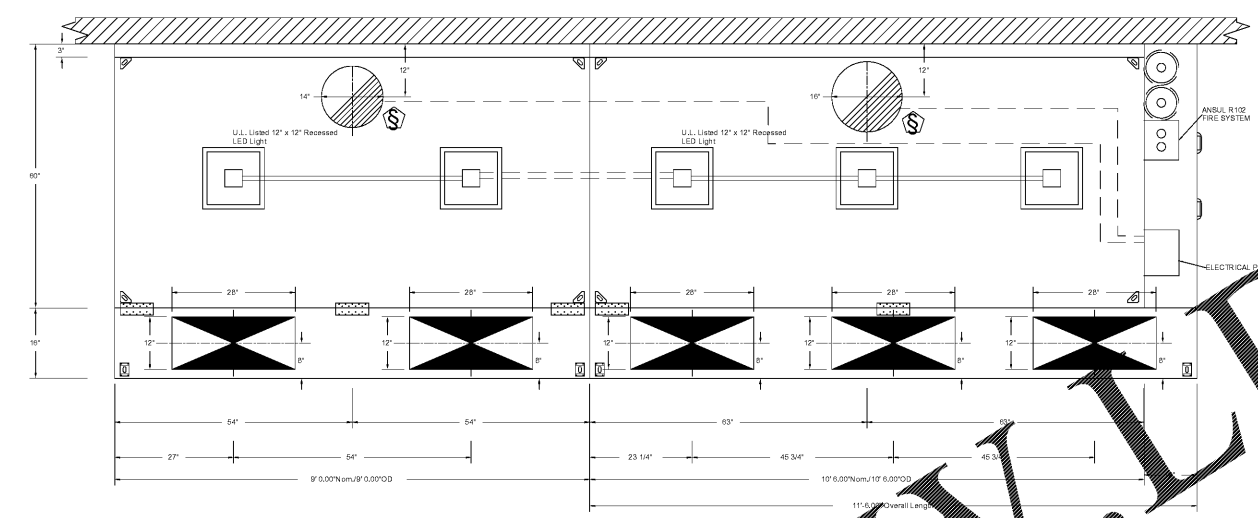
REVISIONS:

No.	Description	Date
-----	-------------	------

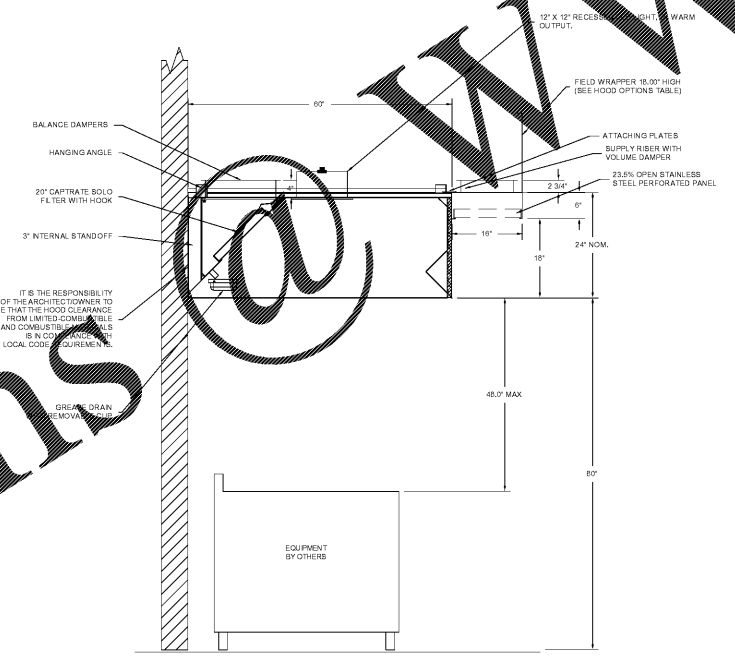
PROJECT: 9202-169770
 DATE: January 2, 2016
 DRAWN BY: JM
 CHECKED BY: AC

EXHAUST HOOD DETAILS

QF503



PLAN VIEW - Hood #3 (#402L)
 9' 0.00" LONG 6024ND-2-PSP-F
 PLAN VIEW - Hood #4 (#402R)
 10' 6.00" LONG 6024ND-2-PSP-F



SECTION VIEW - MODEL
 HOOD#6024ND-2-PSP-F and RJ

C:\Users\Jennifer.Murphy\Documents\WCC_CULINARY LAB_F5_16\jennifer.murphy.rvt
 1/2/2016 8:16:15 AM

E
D
C
B
A