



MEMBERS OF THE AMERICAN INSTITUTE OF ARCHITECTS

COPYRIGHT 2016 ALL RIGHTS RESERVED
 PRINTED OR ELECTRONIC DRAWINGS AND DOCUMENTATION MAY NOT BE REPRODUCED IN ANY FORM WITHOUT WRITTEN PERMISSION FROM LS3P ASSOCIATES LTD.

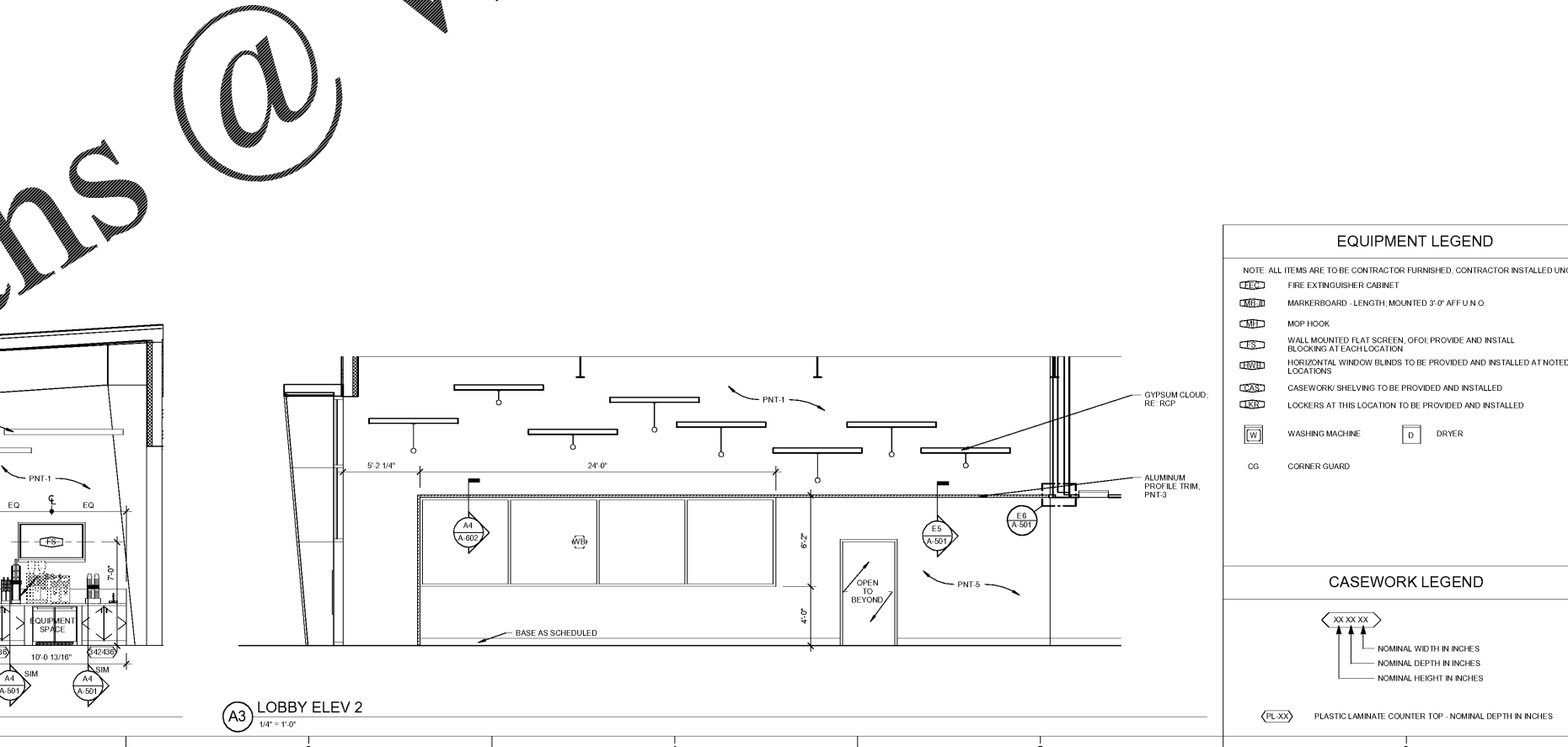
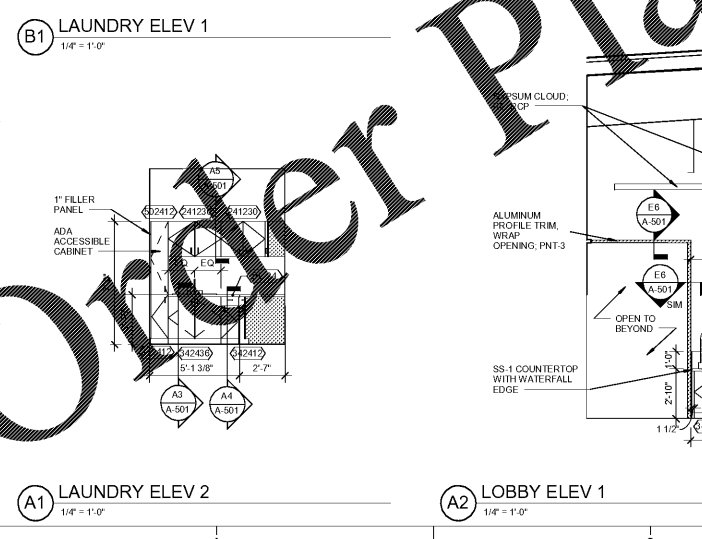
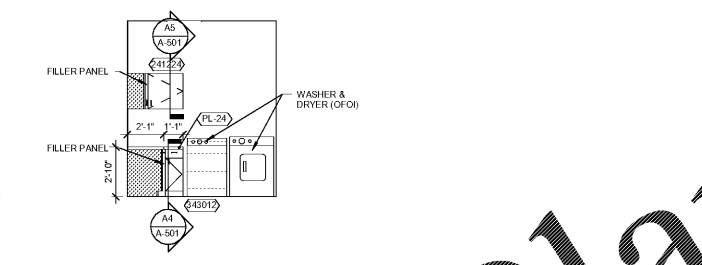
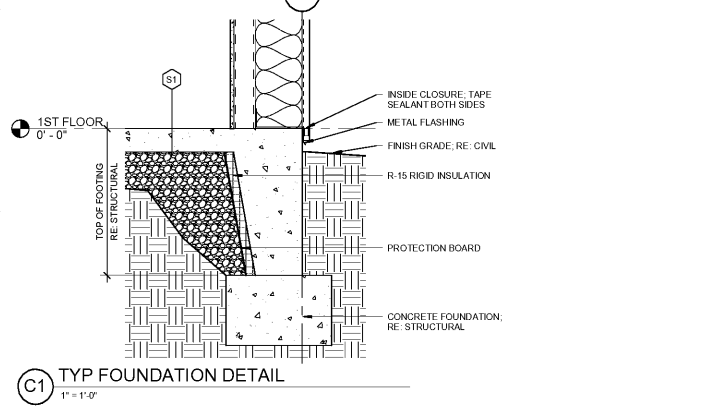
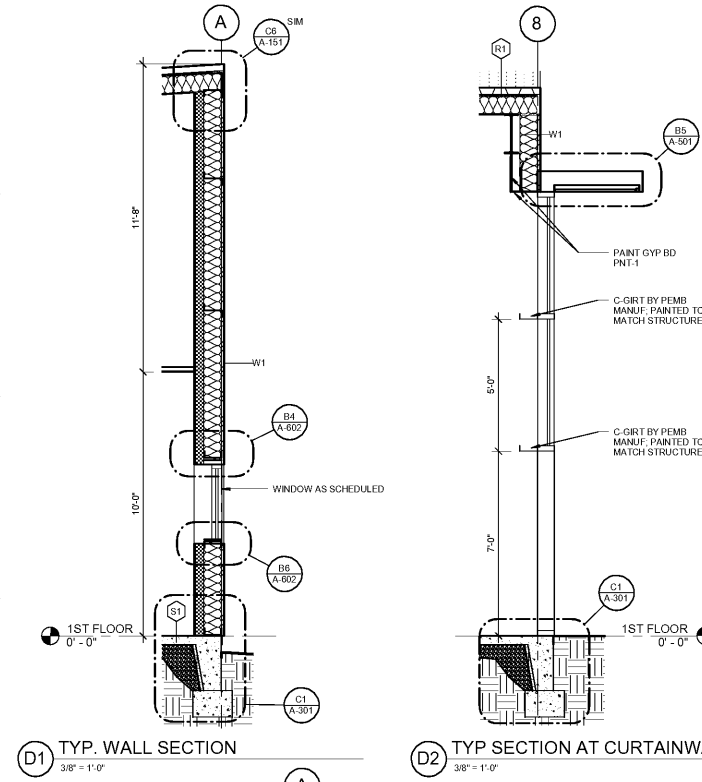
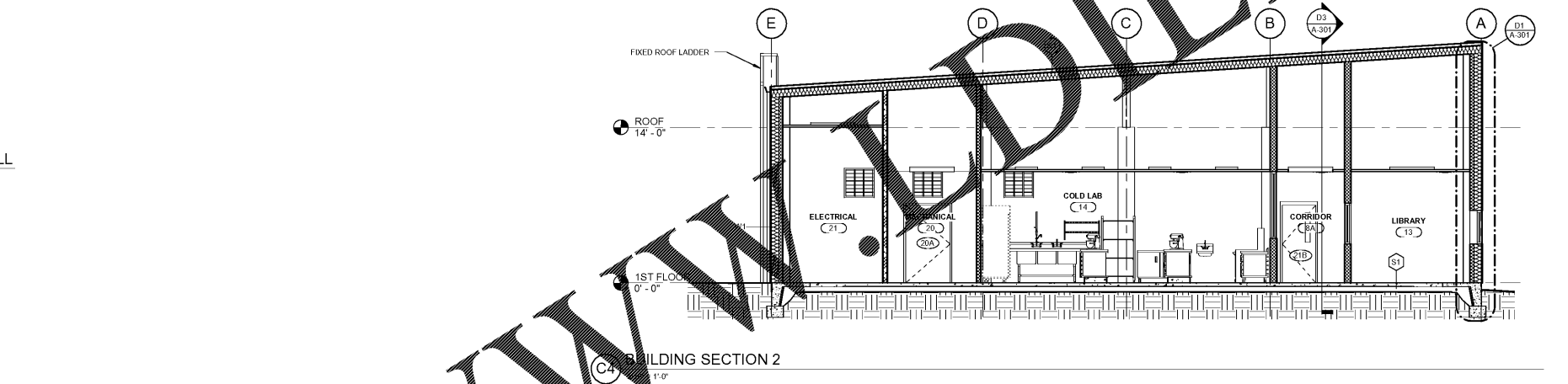
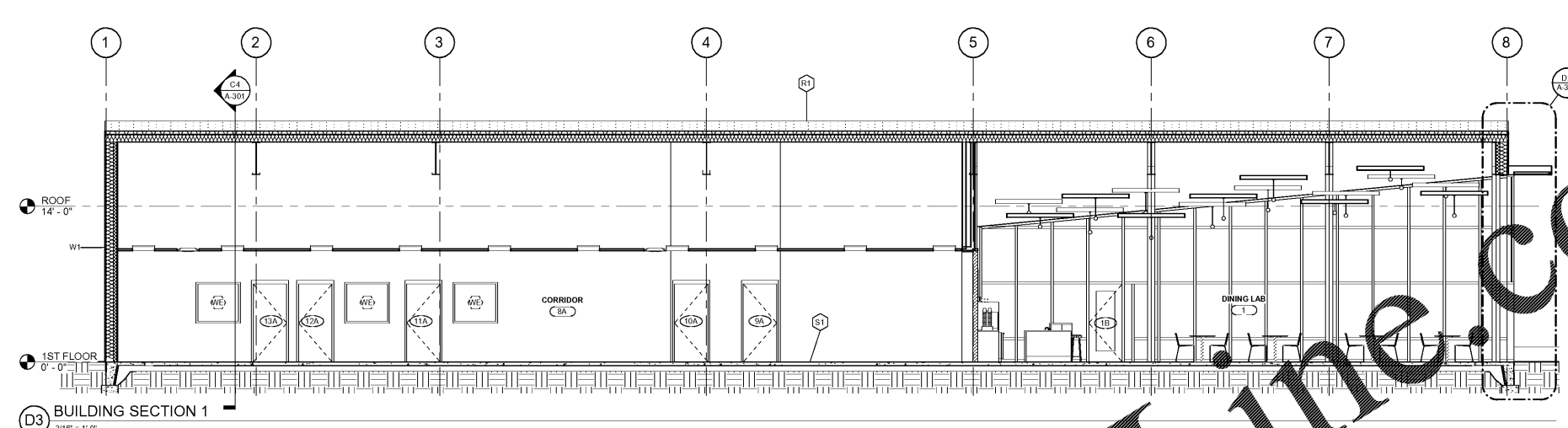
REVISIONS:

No.	Description	Date

PROJECT: 9202-169770
 DATE: 12/18
 DRAWN BY: JLS
 CHECKED BY: WSB

SECTIONS & INTERIOR ELEVATIONS

A-301



EQUIPMENT LEGEND

NOTE: ALL ITEMS ARE TO BE CONTRACTOR FURNISHED, CONTRACTOR INSTALLED UNO

	FIRE EXTINGUISHER CABINET
	MARKERBOARD - LENGTH MOUNTED 3'-0\"/>
	MOP HOOK
	WALL MOUNTED FLAT SCREEN, OFOI PROVIDE AND INSTALL BLOCKING AT EACH LOCATION
	HORIZONTAL WINDOW BLINDS TO BE PROVIDED AND INSTALLED AT NOTED LOCATIONS
	CASEWORK/ SHELVING TO BE PROVIDED AND INSTALLED
	LOCKERS AT THIS LOCATION TO BE PROVIDED AND INSTALLED
	WASHING MACHINE
	DRYER
	CORNER GUARD

CASEWORK LEGEND

	NOMINAL WIDTH IN INCHES
	NOMINAL DEPTH IN INCHES
	NOMINAL HEIGHT IN INCHES
	PLASTIC LAMINATE COUNTER TOP - NOMINAL DEPTH IN INCHES

P:_EDU\2020\9202-169770 Wilkes Community College Culinary Lab\2.0 Design\Drawings\WCC CULINARY LAB_16.rvt
 1/5/2018 11:15:17 AM

Order Plans @ WWW.LS3P.COM