

Sizing Horizontal Roof Leaders Per Table 1106.3 (NC Plumbing Code 2012)

Region: Wilkes County
 Primary Drain Rainfall (100 year-60 Minute in inches per hour) = 3.34
 Secondary Drain Rainfall (100 year-15 minute in inches per hour) = 5.95

Drain Dia. (in)	Maximum Projected Roof Area for Drains of Various Slopes					
	1% Slope		2% Slope		4% Slope	
	Primary	Secondary	Primary	Secondary	Primary	Secondary
3	1057	553	1491	780	2203	1106
4	2407	1265	3409	1783	4835	2525
5	4297	2249	6072	3177	8589	4493
6	6883	3601	9713	5083	13280	7212
8	14793	7680	20972	10974	29579	15474
10	26634	13939	37585	19645	53268	27877
12	42846	22422	60416	31662	85692	44840
15	70938	40047	108080	56562	153228	80052

WILKES COMMUNITY COLLEGE

SCO# 2017-01A
 NBOS# 223

CULINARY LAB

LS3P

227 WEST TRADE STREET SUITE 700
 CHARLOTTE, NORTH CAROLINA 28202
 TEL. 704.333.9888 FAX 704.333.2928
 WWW.LS3P.COM

BS&E
 BULLA SMITH
 DESIGN ENGINEERING
 NC Certificate of License C-3232
 1347 Harding Place Suite 201
 Charlotte, NC 28204
 © 704.333.3122
 A STANLEY D. LINDSEY AND ASSOCIATES, LTD. OFFICE



MEMBERS OF THE AMERICAN INSTITUTE OF ARCHITECTS

COPYRIGHT 2018 ALL RIGHTS RESERVED
 PRINTED OR ELECTRONIC DRAWINGS AND DOCUMENTATION MAY NOT BE REPRODUCED IN ANY FORM WITHOUT WRITTEN PERMISSION FROM LS3P ASSOCIATES LTD.

REVISIONS:

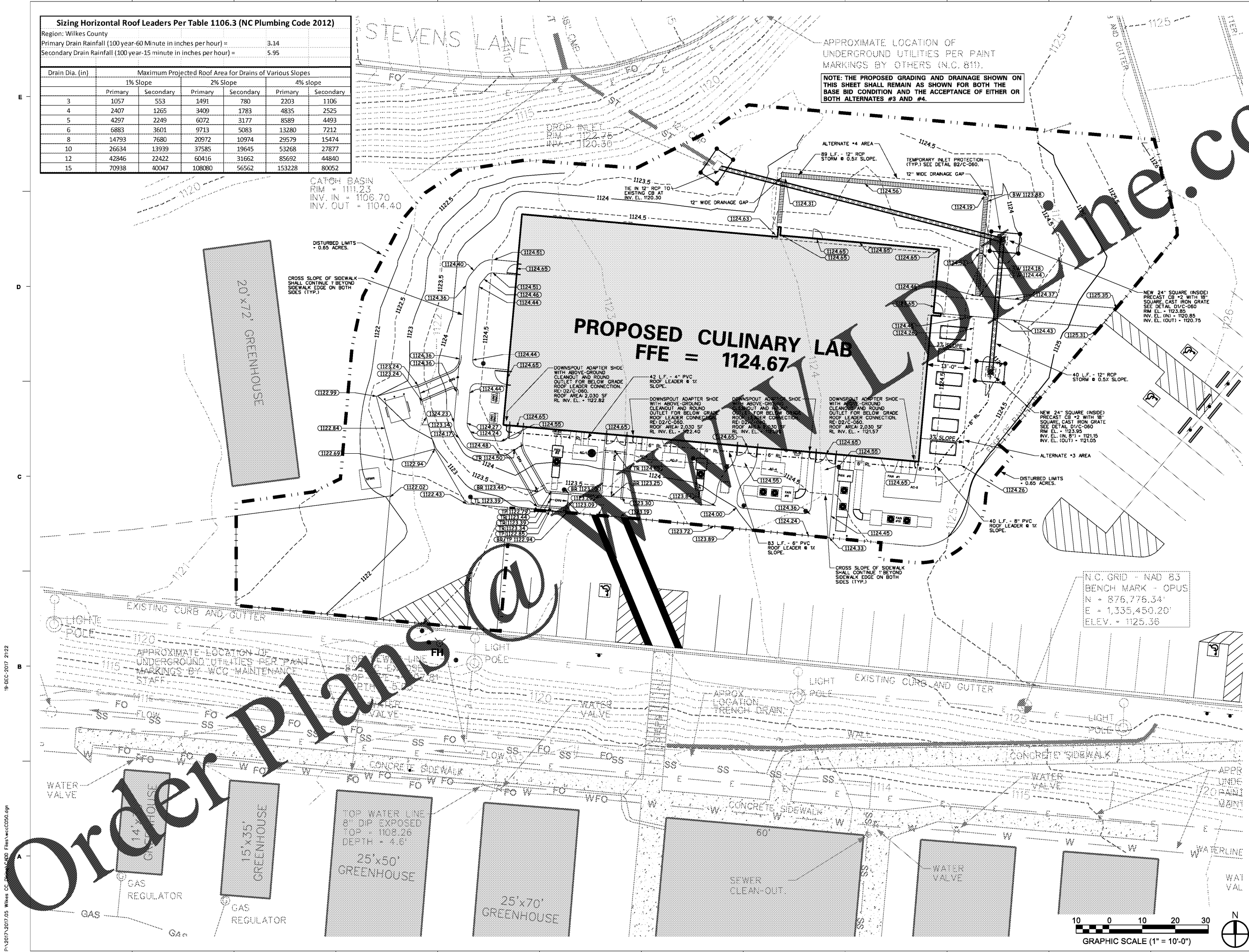
No.	Description	Date

PROJECT: 5202-189770
 DATE: January 2, 2018
 DRAWN BY: S.H.D.
 CHECKED BY: J.L.S.

GRADING AND DRAINAGE PLAN

C-050

BID SET



APPROXIMATE LOCATION OF UNDERGROUND UTILITIES PER PAINT MARKINGS BY OTHERS (N.C. 811).
 NOTE: THE PROPOSED GRADING AND DRAINAGE SHOWN ON THIS SHEET SHALL REMAIN AS SHOWN FOR BOTH THE BASE BID CONDITION AND THE ACCEPTANCE OF EITHER OR BOTH ALTERNATES #3 AND #4.

CATCH BASIN
 RIM = 111.23
 INV. IN = 1106.70
 INV. OUT = 1104.40

DISTURBED LIMITS = 0.65 ACRES.
 CROSS SLOPE OF SIDEWALK SHALL CONTINUE 1' BEYOND SIDEWALK EDGE ON BOTH SIDES (TYP.)

N.C. GRID - NAD 83
 BENCH MARK - OPUS
 N = 876,776.34'
 E = 1,335,450.20'
 ELEV. = 1125.36'

19-DEC-2017 21:22

PA\2017\2017.05 Wilkes CC\DWG\CADD\Files\wcc050.dgn