

FIXTURE SCHEDULE							
TYPE	MANUFACTURER	CATALOG NO.	VOLT	LAMPS	MOUNTING	REMARKS	VA
A	DAY-BRITE	T232-UV-1/2-EB	120	(2) F32T8-835	SURFACE	4' 2-LAMP GENERAL PURPOSE STRIP LIGHT	75
C	EK-LIGHTING	NITE STAR-NS-MR-B-BLP-5H16-OT-360-490-03-(LAMP)	12V	LED-SORAA LAMP SEE CATALOG NUMBER	SURFACE	LOW VOLTAGE LED DOWNLIGHT	10
CB	G-TRAN	GCMS-60ST-120-12-1-5-CK5-BK	120	N/A	SURFACE MTD. 14'-0" A.F.F.	12V AC LED REMOTE TRANSFORMER	60
D	DOLAN HOSPITALITY PH# 888-506-7383	MFR# 574112-EXTERIOR LARGE SCORCE-NET RATED-BUCKEYE BRONZE-STAINLESS STEEL MESH-MALL MTD	120	LED-SU-24-5H-2700K	SURFACE WALL MTD. AT 6'-0" A.F.F. TO CENTER	LOW VOLTAGE LED ACCENT LIGHT	5
ER	DUAL-LITE	OCR-5-B-0603L (BLACK)	120	LED	EXTERIOR WALL MOUNT	REMOTE LED SINGLE EMERGENCY HEAD	3
XO	DUAL-LITE	HGX-U-R-W-03L-RG12	120	LED	CEILING OR WALL ABOVE DOOR	COMBINATION THIN HEAD/ LED EXIT SIGN WITH INTEGRAL 90 MIN. BATTERY BACK-UP	8
H4	LITHONIA	DSXH-LED-20C-1000-40K-T4M-MVOLT-BLACK	120	LED	HALL	LED WALL PACK	75
HFT	LITHONIA	DSXH-LED-20C-1000-40K-TFTM-MVOLT-BLACK	120	LED	HALL	LED WALL PACK	75

CBA = COLOR AS SELECTED BY ARCHITECT.

NOTES:

- ALL FLUORESCENT LIGHTING FIXTURES SHALL HAVE ENERGY SAVING LAMPS WITH ELECTRONIC BALLASTS AS SHOWN IN THE SCHEDULE.
- PROVIDE NECESSARY MOUNTING HARDWARE AND ACCESSORIES FOR ALL FIXTURES. ACCESSORIES SHALL INCLUDE ALL HARDWARE TO MOUNT FIXTURES AS SHOWN ON SCHEDULES AND/OR DESCRIBED IN THE NOTES.
- ALL FIXTURE SUBSTITUTIONS MUST BE SUBMITTED FOR APPROVAL (EQUALS ONLY).
- ALL EMERGENCY, EXIT AND NIGHT LIGHT FIXTURES SHALL BE CONNECTED AHEAD OF LOCAL SWITCHES, RELAYS, OR CONTACTORS UNLESS OTHERWISE NOTED.
- ALL PRE SUBMITTALS SHALL BE ACCOMPANIED WITH PHOTOMETRIC DATA.
- EQUAL ACCEPTED MANUFACTURERS ARE: DAY-BRITE, LITHONIA, AND COLUMBIA. EVEN THOUGH THESE MANUFACTURERS ARE ACCEPTED, A TEN DAY PRIOR APPROVAL MUST BE SUBMITTED FOR EVALUATION.
- CATALOG NUMBER ON FIXTURE SCHEDULE MAY NOT REFERENCE EVERY HARDWARE COMPONENT REQUIRED TO MOUNT FIXTURE AS INTENDED. VERIFY WITH MANUFACTURER FOR PROPER MOUNTING HARDWARE AND ANY ADDITIONAL COMPONENTS REQUIRED TO MOUNT FIXTURE AS INTENDED OR SHOWN.
- LAMPS SHALL BE ENERGY SAVING, COLOR TEMPERATURE AS SHOWN ON SCHEDULE WITH MINIMUM CRI OF 82.

1. LAMPS SHALL BE BY SYLVANIA, G.E., OR PHILIPS, EXCEPT WHEN SUCH LAMPS ARE NOT AVAILABLE FROM THESE MANUFACTURERS, OR SPECIFIED OTHERWISE IN SCHEDULE.

10. SHOP DRAWINGS SHALL INCLUDE:

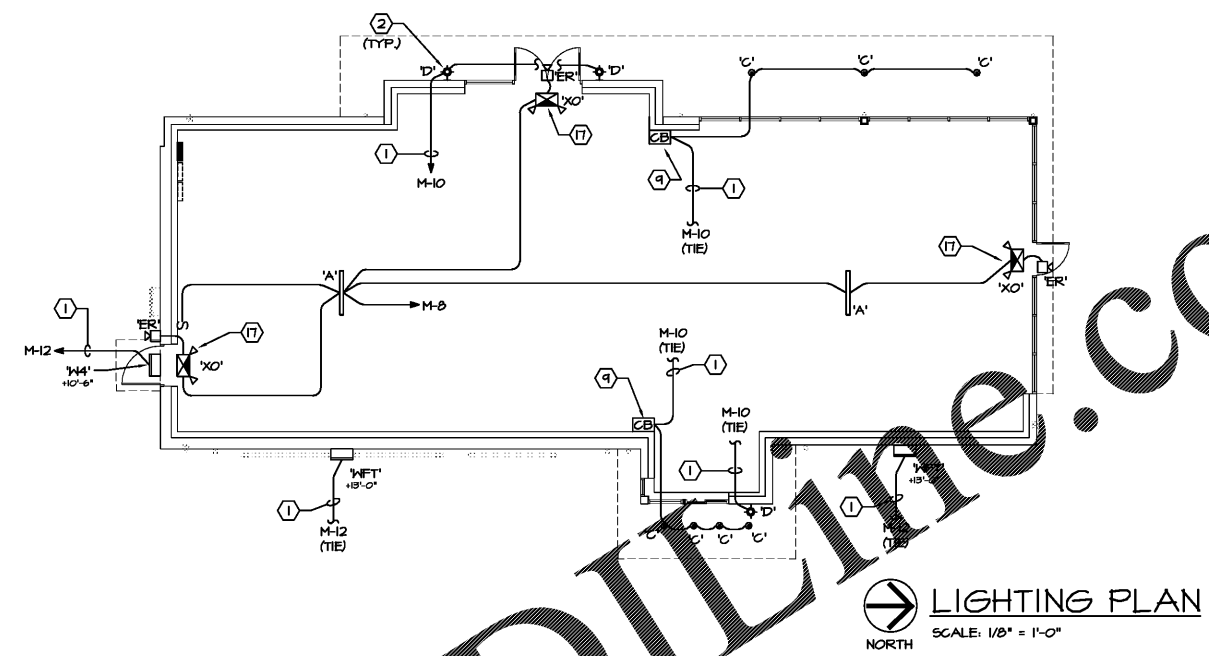
- COMPLETE FIXTURE CUT SHEETS INCLUDING PHOTOMETRICS.
- BALLAST CUT SHEETS.
- WHERE COLOR SELECTION IS REQUIRED, COLOR CHART SHALL BE PROVIDED WITH THE SHOP DRAWINGS FOR SELECTION BY ARCHITECT/OWNER.
- LAMP CUT SHEETS.

NOTES:

- SHOP DRAWINGS SHALL BE PREPARED BY MANUFACTURER REPRESENTATIVE, AND NOT BY CONTRACTOR.
- CONTRACTOR SHALL PROVIDE ALL OF THE REQUIRED DATA LISTED ABOVE WITH THE SHOP DRAWINGS.

11. EMERGENCY LIGHTING SYSTEM INCLUDING BUT NOT LIMITED TO BATTERY BALLAST IN THE FLUORESCENT FIXTURES SHALL BE UL 924 LISTED AND COMPLY WITH NFPA 101 LIFE SAFETY CODE SECTION 7.4. THE SYSTEM SHALL BE PERIODICALLY TESTED PER NFPA 101 SECTION 7.9.3.1.1.

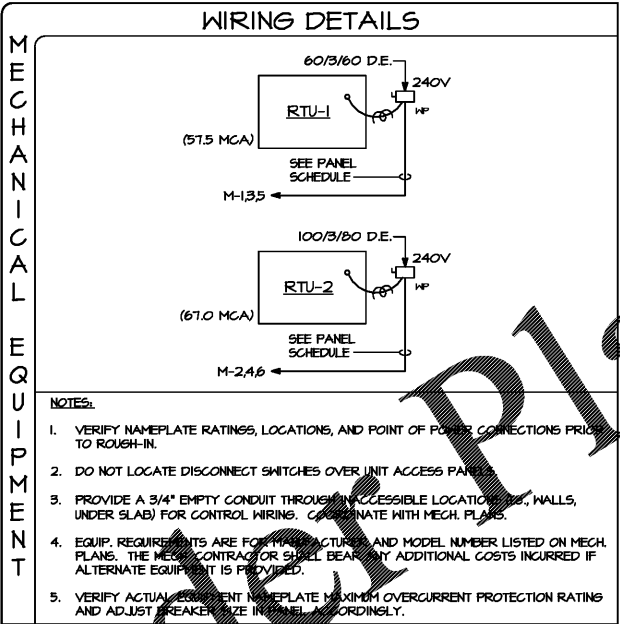
12. ALL FLUORESCENT LUMINARIES SHALL COMPLY WITH NEC 410.73 (6) FOR BALLAST DISCONNECT.



LIGHTING PLAN
SCALE: 1/8" = 1'-0"
NORTH

NOTES

- CIRCUIT(S) TO BE CONTROLLED BY PHOTOCELL.
- EXTERIOR MOUNTED LIGHT FIXTURE. SEE ARCHITECTURAL ELEVATION FOR EXACT LOCATION.
- PROVIDE WEATHERPROOF JUNCTION BOX WITH 1" CONDUIT STUBBED IN TO JOIST SPACE FOR TENANT SIGNAGE. COORDINATE WITH SIGN CONTRACTOR PRIOR TO ROUGH-IN.
- SHOW WINDOW RECEPTACLES IN ACCORDANCE WITH NEC 210.62 TO BE FURNISHED AND INSTALLED UNDER TENANT FIT-UP DRAWINGS.
- ELECTRICAL CONTRACTOR SHALL PROVIDE THREE SPARE 1" CONDUITS WITH PULLWIRE RUN THRU FOUNDATION WALL SET REAR OF BUILDING AND CAPPED 2" A.F.F. CONDUIT SHALL BE TERMINATED ABOVE CEILING. VERIFY STUB-UP LOCATION ON SITE WITH TENANT.
- ELECTRIC SERVICE LOCATION. SEE RISER DIAGRAM ON SHEET E3.0.
- TELEPHONE AND CABLE TV SERVICE STUB-UP. FIELD COORDINATE EXACT LOCATION PRIOR TO ROUGH-IN. CONDUITS TO BE STUBBED UP AT A LOCATION COORDINATED WITH THE TENANT BUILD-OUT DOCUMENTS.
- ELECTRICAL CONTRACTOR TO PROVIDE WEATHERPROOF JUNCTION BOX AT BASE OF "GREEN" WALL FEATURE AND RUN 1" CONDUIT WITH PULLWIRE UNDER SLAB TO PROPOSED PANEL LOCATION.
- MOUNT LOW VOLTAGE TRANSFORMER IN AN ACCESSIBLE LOCATION AT 14'-0" A.F.F. RUN 2 #12 AND 1 #12 E.G. IN 1/2" CONDUIT TO FROM TRANSFORMER AND LOOP TO EACH 'C' FIXTURE SHOWN.
- WEATHERPROOF, GFI, NR TYPE, DUPLEX RECEPTACLE MOUNTED AT RTU. TIE TO INDICATED CIRCUIT.
- HVAC ROOF TOP UNIT. REFER TO MECHANICAL PLANS FOR ADDITIONAL INFORMATION. SEE DETAIL ON THIS SHEET.
- 1" CONDUIT WITH PULLWIRE TO BE RUN THROUGH FOUNDATION WALL TO FRONT OF BUILDING TO THE PATIO FOR OUTLETS ON PATIO SEATING AREA. VERIFY LOCATIONS FOR STUB-UP WITH TENANT'S REPRESENTATIVE. CONDUIT SHALL TERMINATE ABOVE CEILING INSIDE THE BUILDING.
- DUCT SMOKE DETECTOR IN SUPPLY AND RETURN AIR STREAM. SEE DETAIL ON SHEET E3.0.
- 3/4" EMPTY CONDUIT STUBBED DOWN FROM EXHAUST FAN TO WITHIN BAR JOIST SPACE ABOVE PANEL LOCATION FOR FUTURE EXTENSION BY TENANT FIT-UP CONTRACTOR. LABEL ACCORDINGLY.
- PROVIDE 120V, 20A DUPLEX OUTLET FOR DRIVE-THRU ELECTRIC RELEASE AUTOMATIC SLIDER WINDOW, CENTERED OVER WINDOWS, MOUNT AT 80" A.F.F. SEE MANUFACTURER SPECIFICATION FOR FURTHER REQUIREMENTS.
- REMOTE TEST SWITCHES. FIELD VERIFY EXACT LOCATION AND MOUNTING HEIGHT PRIOR TO ROUGH-IN. SEE DETAIL ON SHEET E3.0.
- COMBINATION EXIT/EMERGENCY LIGHT TO BE CONNECTED TO LOCAL LIGHTING CIRCUIT AHEAD OF SWITCHING OR CONTROL.
- DETECTOR LOOP CENTERED ON THE WINDOW 2" BELOW FINISH GRADE. ROUTE (1) 1" CONDUIT WITH PULL WIRE TO DRIVE THRU WINDOW AND TERMINATE NEAR TIME SIGNAL PROCESSOR (TSP). FIELD COORDINATE EXACT LOCATION WITH TENANT PRIOR TO ROUGH-IN.
- J-BOX WITH 20AMP, 1-POLE, 120V, MOTOR RATED SWITCH AT THE PUMP. MAKE ALL FINAL TERMINATIONS AS REQUIRED.



EQUIPMENT STUB-UP NOTE

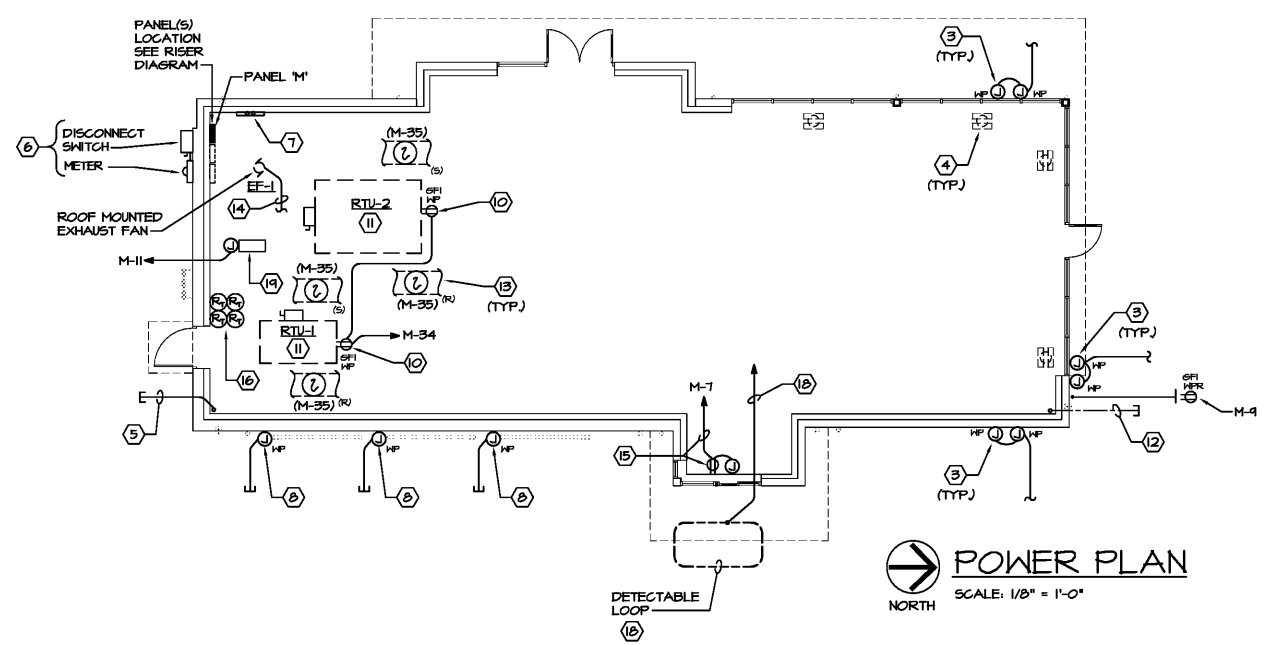
ELECTRICAL CONTRACTOR SHALL OBTAIN A COPY OF TENANT DRAWING I-III FOR LAYOUT OF CONDUIT STUB-UPS AT EQUIPMENT LOCATIONS. PROVIDE PULLWIRE IN ALL CONDUIT STUB-UP RUNS.

CONDUITS TO BE RUN UNDERSLAB TO ADJACENT FULL HEIGHT WALL AND UP IN FURRED OUT SPACE TO ABOVE DROP CEILING FOR FUTURE WIRING.

CONDUIT STUB-UP NOTE:

COORDINATE ALL STUB-UP LOCATIONS AND REQUIREMENTS WITH TENANT PLANS PRIOR TO ROUGH-IN. PROVIDE PULLWIRE FOR ALL EMPTY CONDUITS. CAP AND LABEL EACH CONDUIT STUB-UP.

WORK SHOWN UNDER THIS PERMIT IS FOR SHELL BUILDING ONLY. ALL ADDITIONAL INTERIOR WORK TO BE PERFORMED UNDER SEPARATE PERMIT, PRIOR TO TENANT OCCUPYING SPACE.



POWER PLAN
SCALE: 1/8" = 1'-0"
NORTH

CHEHAYE & ASSOCIATES, INC.
CONSULTING PROFESSIONAL ENGINEERS

8702 AZEEL ST. TAMPA, FL 33609 (813) 876-1415 (fax) 876-0913

LIC. #49521 SOUHEIL CHEHAYE CERT. #7340 17-110

FWH Architects

AA 0003300
3336 Gandy Blvd, Suite 201
Holiday, Florida 34690
Ph. 727. 815. 3336
Fax 727. 815. 3337

brightwork real estate

3706 WEST SWANN AVE, SUITE 200
TAMPA, FL 33609
PHONE: 813.874.1770

TO THE BEST OF THE KNOWLEDGE OF THE ARCHITECTS AND ENGINEERS, PLANS AND SPECIFICATIONS COMPLY WITH THE APPLICABLE MINIMUM BUILDING CODES AND THE APPLICABLE MINIMUM FIRE SAFETY STANDARDS

SOUHEIL CHEHAYE, P.E.
FL License No. 49521

no.	date	revision descriptions

STARBUCKS SHELL CONSTRUCTION

2500 MONUMENT ROAD
JACKSONVILLE, FL

12.13.17
date

17.047
comm. no.

LIGHTING AND POWER PLANS

E2.0

Order Plans