

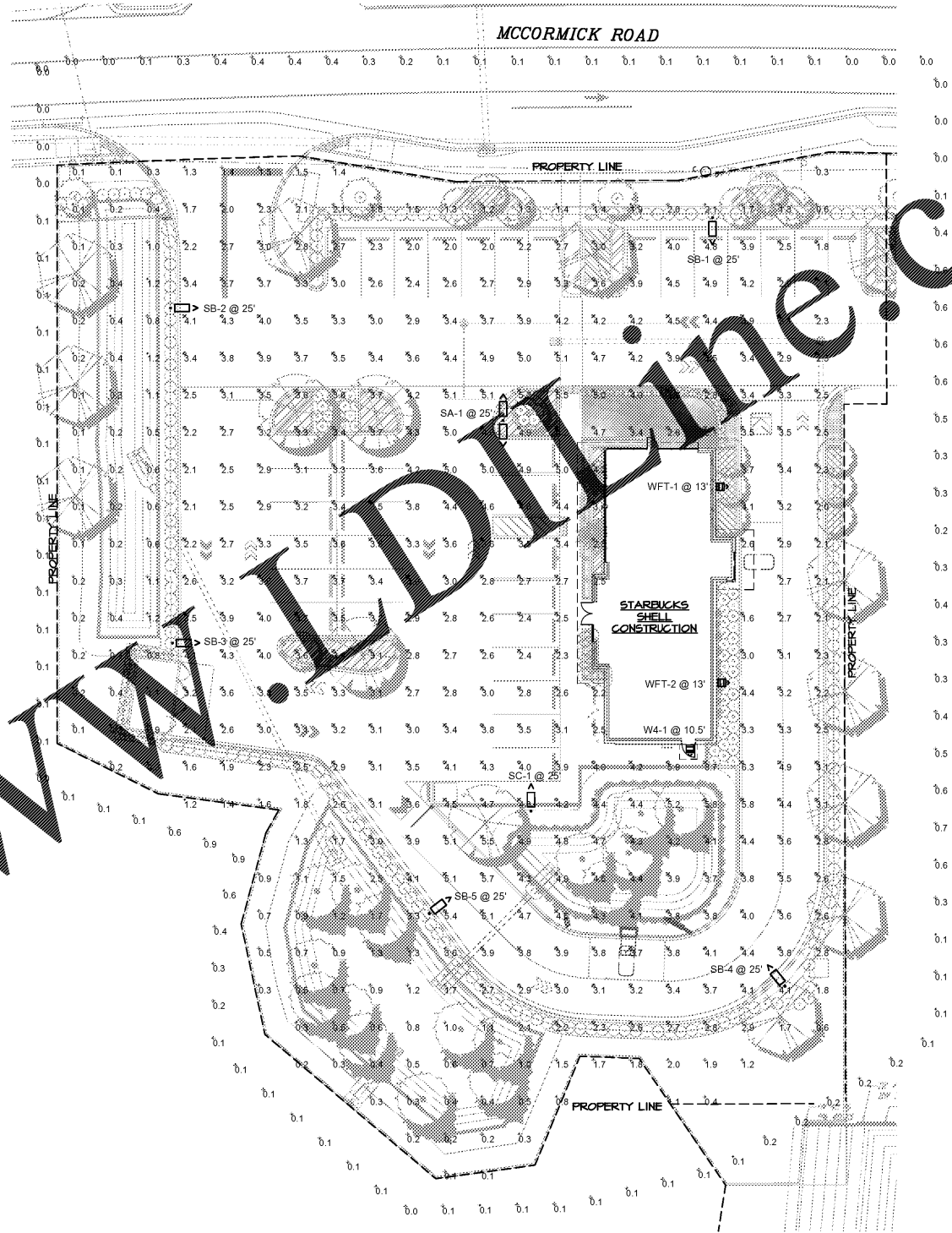
- NOTES:**
- 1 DIRECT BURIAL POLE SHALL BE RATED FOR WIND VELOCITY PER FBC 2014 5TH EDITION. CALCULATION SHALL BE BASED ON THE EPA VALUE FOR THE LUMINAIRE SHOWN PER POLE.
 - 2 ELECTRICAL CONTRACTOR TO COORDINATE THE TYPE OF TENON OR MOUNTING REQUIRED WITH THE FIXTURE MANUFACTURER, TO MOUNT THE SITE LIGHT FIXTURE TO THE POLE AS INTENDED AND INDICATED.
 - 3 NO. 6 GROUND CONDUCTOR, FURNISHED WITH THE POLE, BONDED AT THE J BOX AT THE BOTTOM OF THE POLE. SEE NOTE #4, AND TO THE EQUIPMENT GROUND CONDUCTOR RAN WITH THE CIRCUIT FROM THE DESIGNATED PANEL IN THE BUILDING.
 - 4 LUMINAIRE. SEE FIXTURE SCHEDULE ON THE SITE LIGHTING PLAN FOR QUANTITY, TYPE, AND OPTIC ORIENTATION. PROVIDE PROPER BRACKETS TO MOUNT THE FIXTURE AS SHOWN ON THE PHOTOMETRIC PLAN. COORDINATE WITH THE FACTORY AND PROVIDE BRACKET CUT SHEET TO THE ENGINEER FOR APPROVAL PRIOR TO RELEASE.
 - 5 FURNISHED AND INSTALLED IN-LINE BALLAST FUSES IN BUSSMANN "TRON" WEATHERPROOF FUSE HOLDERS #HEB-AD WITH #KTK FUSES (SIZE AS REQUIRED).
 - 6 CONDUIT, EXTEND TO PULL BOX OR NEXT POLE AS REQUIRED.
 - 7 3/4" x 10'-0" COPPER CLAD GROUND ROD FOR LIGHTNING PROTECTION. CONNECTION TO THE GROUND ROD SHALL BE MADE VIA A UL LISTED MECHANICAL CONNECTION.
 - 8 SEE ELECTRICAL SITE PLAN FOR CONDUIT AND WIRE SIZES AND DESTINATION PANEL. WIRE SIZE UP THE POLE SHALL BE SAME SIZE FEEDING THE POLE.
 - 9 PROVIDE FLUSH IN GRADE (12"x12"x1/2" MINIMUM) WEATHERPROOF ELECTRICAL HANDHOLE ENCLOSURE. ELECTRICAL HANDHOLE ENCLOSURE SHALL BE PROVIDED AND INSTALLED IN ACCORDANCE WITH N.E.C. ARTICLE 314.30 "HANDHOLE ENCLOSURES". THESE BOXES SHALL BE USED AS PULL BOXES ONLY. NO TERMINATIONS SHALL BE MADE IN THESE BOXES EXCEPT FOR THE GROUND CONDUCTOR. LOCATE BOX WITHIN 3'-0" OF POLE BASE, WHERE POSSIBLE. THE BOX SHALL BE LOCATED IN A LANDSCAPE AREA ONLY AND NOT SUSCEPTIBLE TO ANY TRAFFIC CONDITION. COVER SHALL BE RATED FOR THE LOAD IMPOSED UPON IT, AND SHALL BE PROVIDED WITH LOG STAMPING "ELECTRICAL".
 - 10 DEPTH OF THE EMBEDMENT OF THE POLE SHALL BE AS RECOMMENDED BY POLE MANUFACTURER TO MEET REQUIRED WIND LOADINGS. MINIMUM EMBEDMENT SHALL NOT BE LESS THAN 3'-0".

Symbol	Label	Quantity	Manufacturer	Catalog No.	Description	Lamp	Number Lamps	Beam	Lumens Per Lamp	Light Loss Factor	Wattage
SA	SA	5	Lithonia Lighting	DSX1 LED P7 40K 14M MVOLT DS	DSX1 LED P7 40K 14M MVOLT	LED	1	DSX1_LED_P7_40K_14M_MVOLT1 ies	21326	0.9	366
SA2	SA2	5	Lithonia Lighting	DSX1 LED P7 40K 14M MVOLT DS HS	DSX1 LED P7 40K 14M MVOLT with houseside shield	LED	1	DSX1_LED_P7_40K_14M_MVOLT_HS ies	15750	0.9	183
SC	SC	1	Lithonia Lighting	DSX1 LED P7 40K 14M MVOLT DS	DSX1 LED P7 40K 14M MVOLT	LED	1	DSX1_LED_P7_40K_14M_MVOLT1 ies	21326	0.9	183
WFT	WFT	2	Lithonia Lighting	DSXW1 LED 20C 1000 40K 14M MVOLT	DSXW1 LED WITH (2) 10 LED LIGHT ENGINES, TYPE 14M OPTIC, 4000K, @ 1000mA	LED	1	DSXW1_LED_20C_1000_40K_14M_MVOLT1 ies	7420	0.9	73.2
WFT	WFT	2	Lithonia Lighting	DSXW1 LED 20C 1000 40K 14M MVOLT	DSXW1 LED WITH (2) 10 LED LIGHT ENGINES, TYPE 14M OPTIC, 4000K, @ 1000mA	LED	1	DSXW1_LED_20C_1000_40K_14M_MVOLT1 ies	7711	0.9	73.2

Luminaire Locations											
No.	Label	X	Y	Z	Mt	Orientation	TH	X	Y	Z	Alt
1	SA	626.68	774.11	25.00	25.00	0.00	0.00	626.68	774.11	0.00	
1	SA-1	626.68	776.86	25.00	25.00	0.00	0.00	626.68	776.86	0.00	
1	SA-2	626.68	771.36	25.00	25.00	180.00	0.00	626.68	771.36	0.00	
1	SB	682.56	628.55	25.00	25.00	180.00	0.00	682.56	628.55	0.00	
2	SB	536.76	804.91	25.00	25.00	90.00	0.00	536.76	804.91	0.00	
3	SB	537.15	714.32	25.00	25.00	90.00	0.00	537.15	714.32	0.00	
4	SB	702.06	621.90	25.00	25.00	319.24	0.00	702.06	621.90	0.00	
5	SB	606.46	641.53	25.00	25.00	50.11	0.00	606.46	641.53	0.00	
1	SC	832.33	672.84	25.00	25.00	0.00	0.00	832.33	672.84	0.00	
1	W4	675.16	686.60	10.50	10.50	180.00	0.00	675.16	686.60	0.00	
1	WFT	684.88	756.84	13.00	13.00	90.00	0.00	684.88	756.84	0.00	
2	WFT	685.68	703.92	13.00	13.00	90.00	0.00	685.68	703.92	0.00	

Surface Schedule									
Name	Reflectance	Normal	Area						
	Front	Back	X	Y	Z				
Side 1	0%	0%	0.00	0.00	1.00	2534.24			
Side 2	0%	0%	1.00	0.00	0.00	724.24			
Side 3	0%	0%	0.00	1.00	0.00	160.49			
Side 4	0%	0%	1.00	0.00	0.00	353.89			
Side 5	0%	0%	0.00	1.00	0.00	144.03			
Side 6	0%	0%	1.00	0.00	0.00	1394.47			
Side 7	0%	0%	0.00	1.00	0.00	969.42			
Side 8	0%	0%	1.00	0.00	0.00	690.79			
Side 9	0%	0%	0.00	1.00	0.00	102.86			
Side 10	0%	0%	-1.00	0.00	0.00	757.17			
Side 11	0%	0%	0.00	1.00	0.00	98.76			
Side 12	0%	0%	1.00	0.00	0.00	1924.64			
Top	0%	0%	0.00	0.00	1.00	2534.24			

Statistics									
Description	Symbol	Avg	Max	Min	Max/Min	Avg/Min			
OVERALL SITE	+	2.7 fc	8.7 fc	0.1 fc	87.0:1	27.0:1			
PARKING AREAS	*	9.5 fc	8.7 fc	1.6 fc	5.4:1	2.2:1			
SPILL LIGHT	+	0.2 fc	0.9 fc	0.0 fc	N/A	N/A			



ALL SITE AND BUILDING LIGHTS PROPOSED ON THIS PROJECT ARE DESIGNED AS FULL CUTOFF CLASSIFICATION WITH ZERO UP LIGHT COMPONENTS.

THESE PHOTOMETRICS ARE INTENDED FOR DESIGN AND EVALUATION PURPOSES ONLY. THE POINT-BY-POINT SHOWN IS BASED ON A COMPUTER LIGHTING SCHEDULE WITH APPROXIMATED PARAMETERS. THEREFORE, THESE PHOTOMETRICS MAY VARY FROM ACTUAL FIELD CONDITIONS.

FIXTURE NOTE:
FIXTURE SHOWN ON THIS SHEET IS FOR REFERENCE ONLY. SEE ACTUAL FIXTURE SCHEDULE ELSE WHERE IN THIS DOCUMENTS FOR ACTUAL CATALOG NUMBER AND DESCRIPTION.

CHEHAYEB & ASSOCIATES, INC.
CONSULTING PROFESSIONAL ENGINEERS
3702 AZEELE ST. TAMPA, FL 33609
(813) 876-1415 (fax) 876-0913
LIC. #49521 SOUHEIL CHEHAYEB CERT. #7340 17-110

FWH Architects
3336 Gandy Blvd, Suite 201
Holiday, Florida 34690
Ph. 727. 815. 3336
Fax 727. 815. 3337

brightwork real estate
3706 WEST SWANN AVE, SUITE 200
TAMPA, FL 33609
PHONE: 813.874.1770

TO THE BEST OF THE KNOWLEDGE OF THE ARCHITECTS AND ENGINEERS, PLANS AND SPECIFICATIONS COMPLY WITH THE APPLICABLE MINIMUM BUILDING CODES AND THE APPLICABLE MINIMUM FIRE SAFETY STANDARDS

SOUHEIL CHEHAYEB, P.E.
FL License No. 49521

no.	date	revision descriptions

STARBUCKS SHELL CONSTRUCTION
2500 MONUMENT ROAD
JACKSONVILLE, FL

12.13.17
date
17.047
comm. no.

PHOTOMETRIC SITE PLAN

E1.1

Order Plans