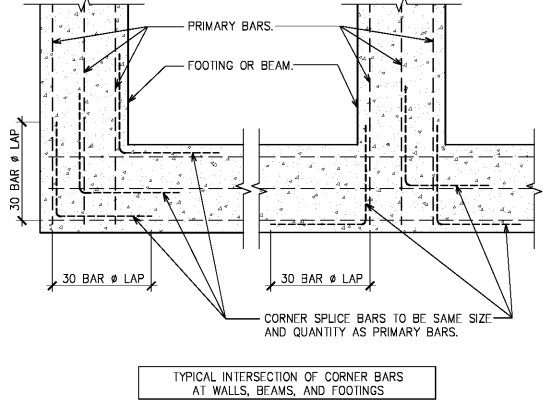
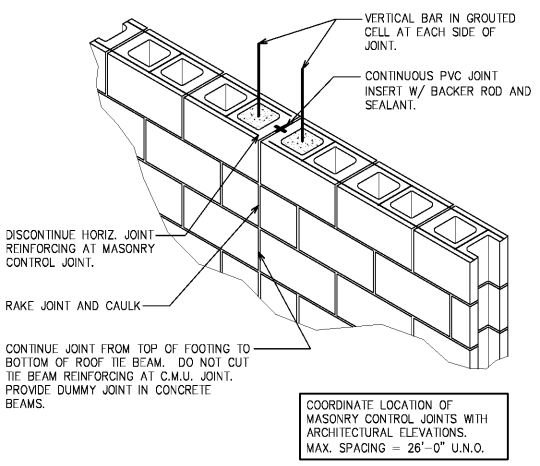


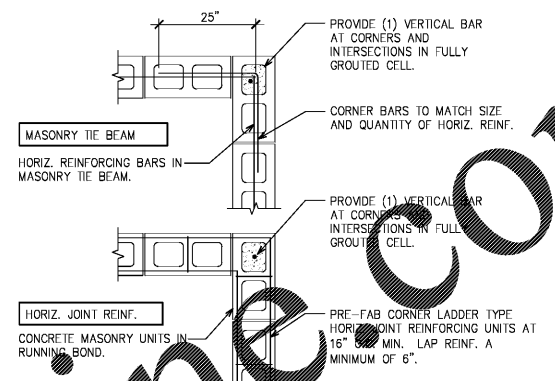
1 FUTURE CONTROL AND CONSTRUCTION JOINT
SCALE: 1 1/2" = 1'-0"



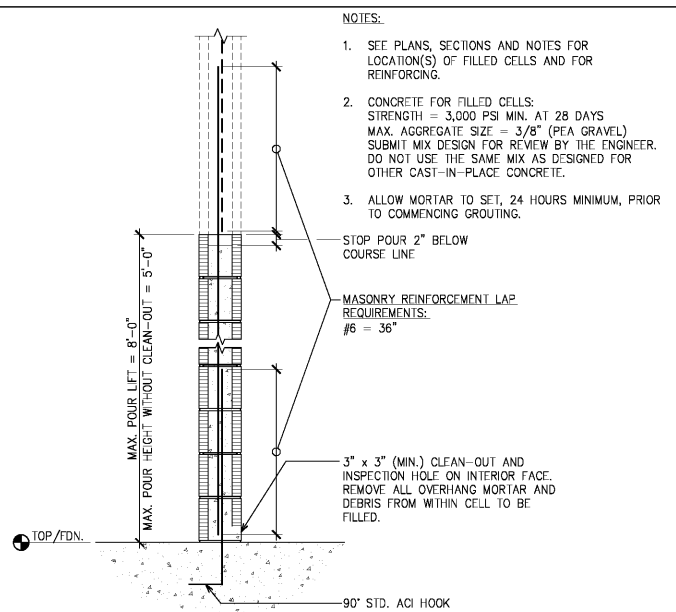
2 CORNER BAR DETAIL
NOT TO SCALE



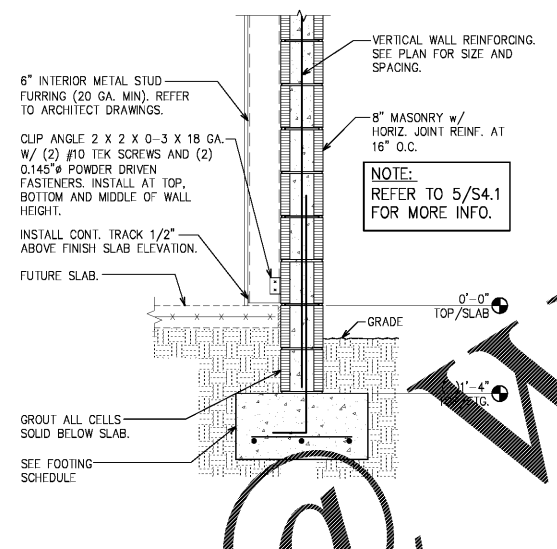
3 MASONRY CONTROL JOINT DETAIL
SCALE: 1 1/2" = 1'-0"



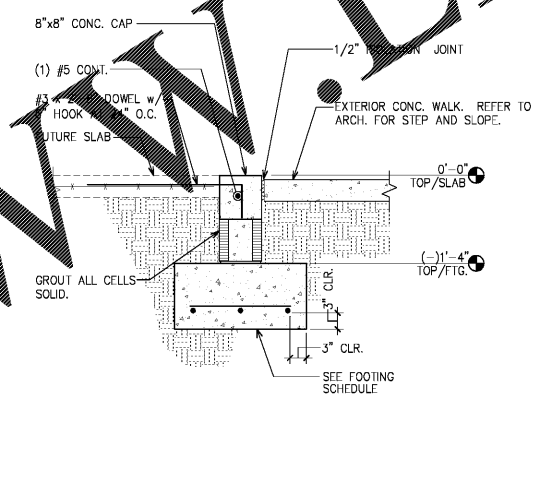
4 TYPICAL REINF. DETAIL AT CORNERS
SCALE: N.T.S.



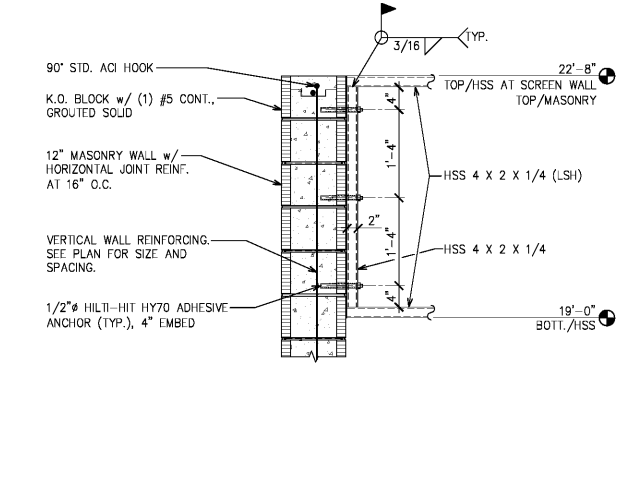
5 MASONRY LIFT DETAIL
SCALE: 3/4" = 1'-0"



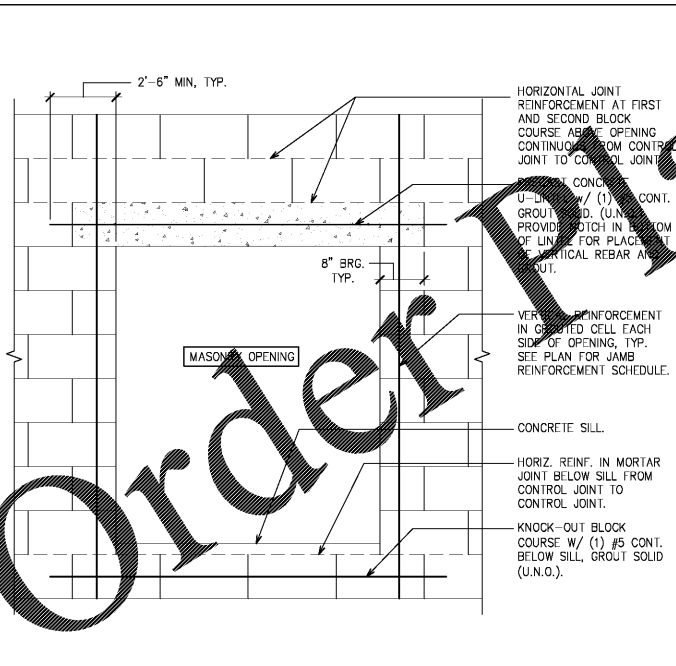
6 EXTERIOR WALL FOOTING
SCALE: 3/4" = 1'-0"



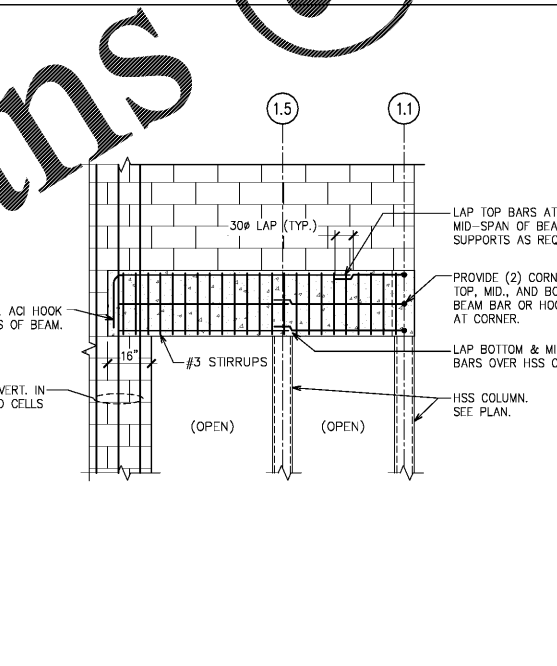
7 SECTION
SCALE: 3/4" = 1'-0"



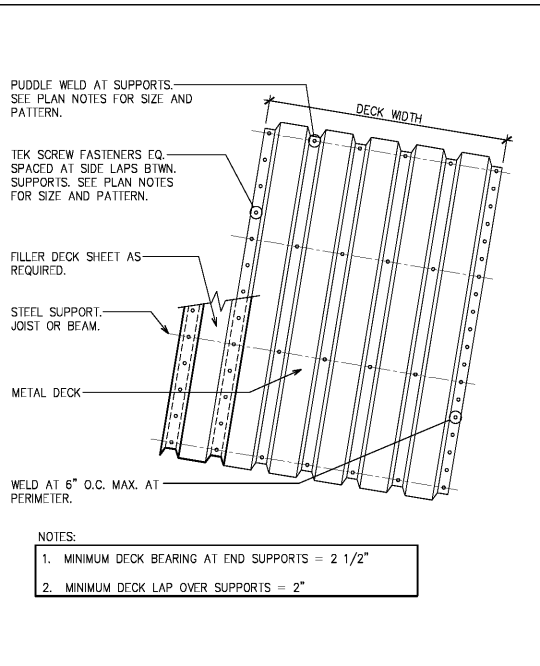
8 DETAIL AT SCREEN WALL ENDS
SCALE: 3/4" = 1'-0"



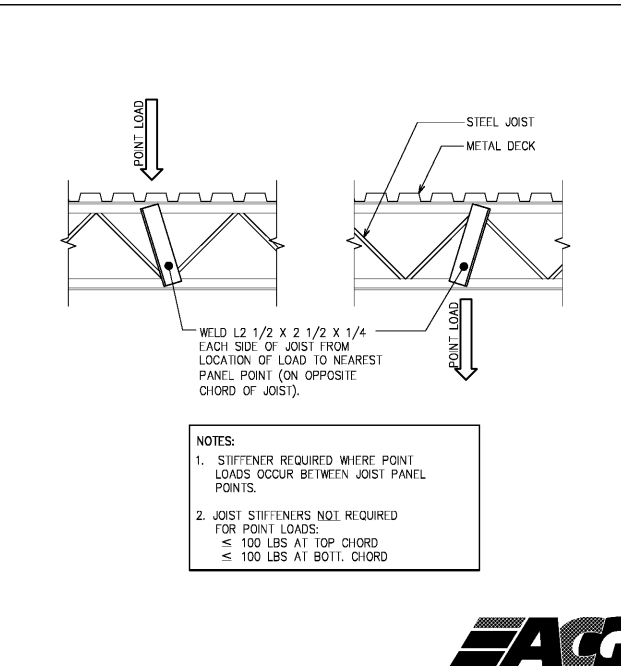
9 WALL ELEVATION AT OPENING
SCALE: 3/4" = 1'-0"



10 CONCRETE BEAM REINFORCING DETAIL
NOT TO SCALE



11 METAL DECK ATTACHMENT
NOT TO SCALE



12 JOIST STIFFENER DETAIL
NOT TO SCALE

FWH Architects
15 Grand Blvd. Suite 201
Tampa, Florida 34690
Ph. 727. 815. 3336

brightwork real estate
37th WEST SWANN AVE. SUITE 200
TAMPA, FL 33609
PHONE: 813.874.1700

TO THE BEST OF THE KNOWLEDGE OF AN ARCHITECT AND ENGINEER, SAID PLANS AND SPECIFICATIONS COMPLY WITH THE APPLICABLE MINIMUM BUILDING CODES AND THE APPLICABLE MINIMUM FIRE SAFETY STANDARDS.

no.	date	revision descriptions

STARBUCKS SHELL CONSTRUCTION
2500 MONUMENT ROAD
JACKSONVILLE, FL

12.13.17
date

17047
comm. no.

SECTIONS AND DETAILS

S4.1

EAG
PROFESSIONAL ENGINEERING, INC.
18912 Melrose Artn. Dr. - Lutz, FL 33558
PH: 813.963.1906
Alden C. Guenther, P.E. #33308 / C.A. #26813