

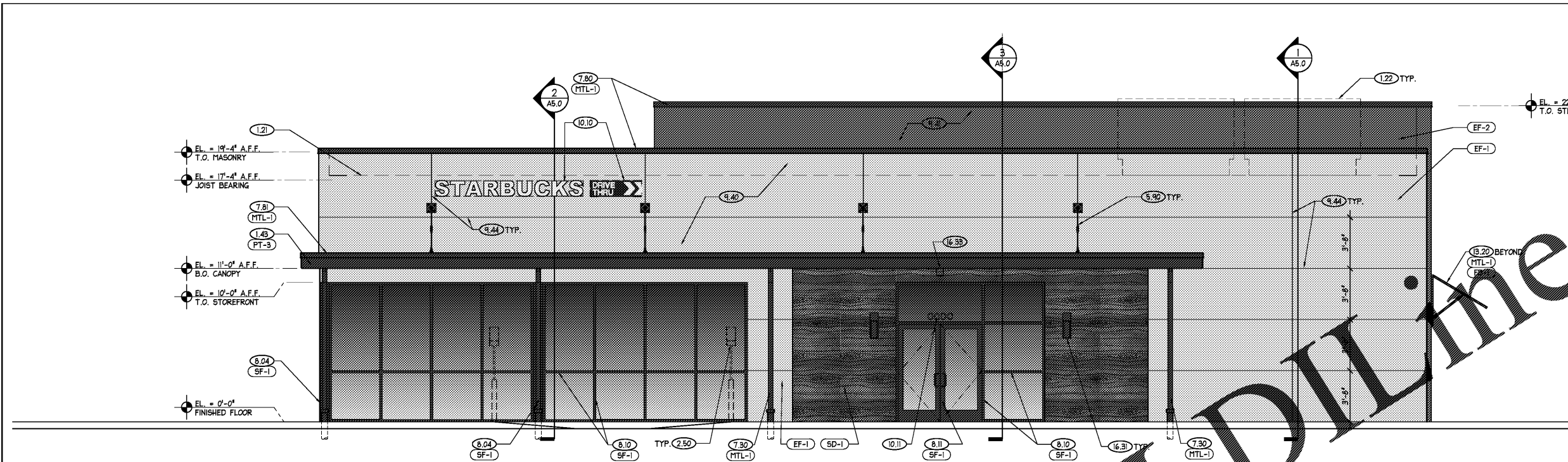
no.	date	revision descriptions

**STARBUCKS SHELL CONSTRUCTION**  
 2500 MONUMENT ROAD  
 JACKSONVILLE, FL

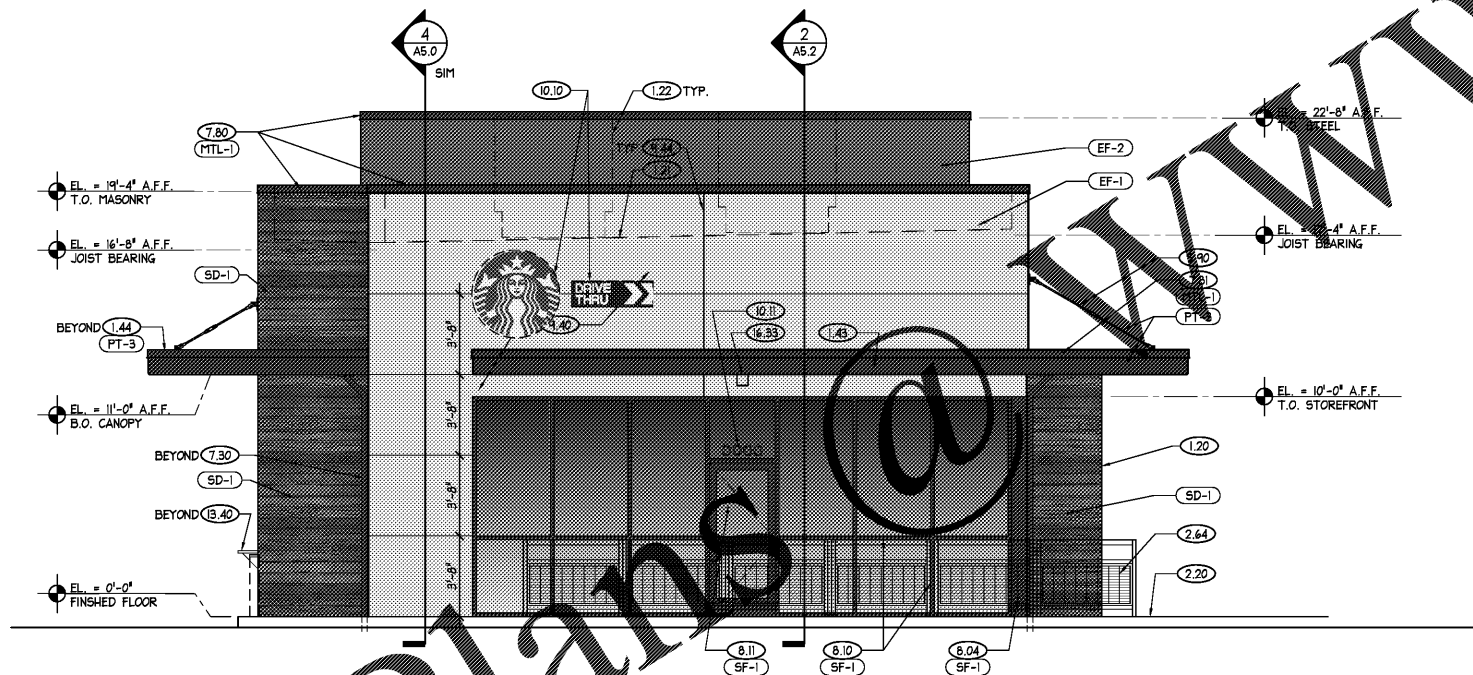
12.13.17  
 date  
 17047  
 comm. no.

EXT. ELEVATIONS AND EXTERIOR FINISH SCHEDULE

**A3.0**



**1 WEST ELEVATION**  
 SCALE: 1/4" = 1'-0"



**2 NORTH ELEVATION**  
 SCALE: 1/4" = 1'-0"

**GENERAL FINISH NOTES**

- EXTERIOR INSULATION FINISH SYSTEM (EIFS) REQUIREMENTS:  
 1. THE STANDARD FINISH COAT OVER CEMENT PLASTER SURFACES SHALL BE AN ACRYLIC EIFS FINISH COAT, 'DRYVIT TAFTS' (OPTION 1) MANUFACTURED BY DRYVIT SYSTEMS, INC. COLORS AS SPECIFIED ON THE EXTERIOR FINISH SCHEDULE, HAVE BEEN SELECTED FROM DRYVIT'S STANDARD COLORS. THIS SYSTEM CONSISTS OF A TINTED PRIMER AND TEXTURED ACRYLIC FINISH WITH INTEGRAL COLOR. THE SPECIFIED SYSTEM HAS A 5-YEAR MANUFACTURER WARRANTY.
- WHERE A CUSTOM COLOR IS REQUIRED FOR THE FINISH COAT OVER CEMENT PLASTER SURFACES, AN ACRYLIC EIFS FINISH COAT, 'DRYVIT TAFTS' (OPTION 1) WITH STRATOTONE COLOR MATCHING SYSTEM AS MANUFACTURED BY DRYVIT SYSTEMS, INC. SHALL BE PROVIDED. CUSTOM COLORS ARE SPECIFIED ON THE EXTERIOR FINISH SCHEDULE. THIS SYSTEM CONSISTS OF A TINTED PRIMER AND TEXTURED ACRYLIC FINISH WITH INTEGRAL COLOR. THE SPECIFIED SYSTEM HAS A 5-YEAR MANUFACTURER WARRANTY.
- ALL FINISH COAT TEXTURES SHALL BE 'SANDPEBBLE' UNLESS OTHERWISE NOTED
- WHERE FOAM TRIM, CORNICE MOLDING OR OTHER SHAPES ARE SPECIFIED, COMPONENTS SHALL BE AS MANUFACTURED BY 'DRYVIT SHAPES BY ACROCORE' AND SHALL BE COMPRISED OF A TYPE I CLASSIFICATION EXPANDED POLYSTYRENE WRAPPED IN A FLEXIBLE IMPACT RESISTANT FIBERGLASS MESH AND COATED WITH A FACTORY APPLIED POLYMER MODIFIED, FLEXIBLE CEMENT COATING

- ALL GENERAL CONTRACTOR BIDS SHALL INCLUDE THE ABOVE STATED SYSTEMS / PRODUCTS IN THEIR BASE BIDS. SUBSTITUTIONS WILL BE CONSIDERED FOR APPROVAL BUT ONLY IF FULLY QUALIFIED IN BIDS INCLUDING COMPLETE SYSTEM / PRODUCT SPECIFICATIONS AND ASSOCIATED COSTS
  - ALUMINUM COPING, DRIP EDGES, SCUPPERS AND DOWNSPOUT REQUIREMENTS:  
 1. ALL COMPONENTS SHALL BE PREFINISHED WITH A FACTORY APPLIED, KYNAR 500 FINISH OR MANUFACTURER EQUIVALENT. COLORS SHALL BE AS SPECIFIED FROM THE MANUFACTURER'S STANDARD COLOR OPTIONS
- GENERAL:
- WHERE PLASTER REVEALS ARE NOT PREFINISHED, REVEALS SHALL BE PAINTED TO MATCH THE ADJACENT WALL COLOR UNLESS OTHERWISE NOTED
  - ALL EXPOSED, BUILDING MOUNTED UTILITIES AND CONDUITS SHALL BE PAINTED TO MATCH THE ADJACENT WALL SURFACES UNLESS OTHERWISE NOTED

**EXTERIOR FINISH SCHEDULE**

CEMENT PLASTER / EIFS FINISHES (ACRYLIC EIFS FINISH WITH INTEGRAL COLOR AND TEXTURE)				PAINT FINISHES			
TAG	MANUFACTURER	COLOR	DESCRIPTION	TAG	MANUFACTURER	COLOR	DESCRIPTION
EF-1	DRYVIT	MATCH BENJAMIN MOORE #HC-84 'ELHIRA WHITE'	CUSTOM DRYVIT STRATOTONE COLOR	PT-2	BENJAMIN MOORE	#2157-10 'OTTER BROWN'	
EF-2	DRYVIT	MATCH BENJAMIN MOORE #2137-10 'OTTER BROWN'	CUSTOM DRYVIT STRATOTONE COLOR	PT-3	BENJAMIN MOORE	#2120-10 'JET BLACK'	
METAL TRIM, COPING, DOWNSPOUTS AND SCUPPERS				SIDING			
MTL-1	PAC-CLAD	'MATTE BLACK'	KYNAR 500	SD-1	NICHIHA	VINTAGE WOOD 'CEDAR'	CEMENTITIOUS SIDING
ALUMINUM STOREFRONT				AWNING FABRIC			
SF-1	YKK	'DARK BRONZE'		FB-1	SUNBRELLA	'5032 BLACK'	

REFER TO SHEET A0.3 FOR KEYNOTE SCHEDULE

REFER TO SHEET A3.0 FOR EXTERIOR FINISH SCHEDULE AND GENERAL FINISH NOTES

SIGNAGE DEPICTED IN THESE DOCUMENTS ARE FOR COORDINATION PURPOSES ONLY. REFER TO ELECTRICAL DRAWINGS WHERE APPLICABLE

IT SHALL BE UNDERSTOOD THAT ALL EXTERIOR BUILDING MOUNTED AND SITE SIGNAGE WILL BE PERMITTED SEPARATELY BY THE SIGN VENDOR, AT THAT TIME, COMPLETE DETAILS INCLUDING, BUT NOT LIMITED TO, SIGN FABRICATION, SIGN INSTALLATION, SIGN AREA AND QUANTITIES, ETC. WILL BE SUBMITTED FOR PERMIT REVIEW AND APPROVAL PRIOR TO COMMENCEMENT OF WORK