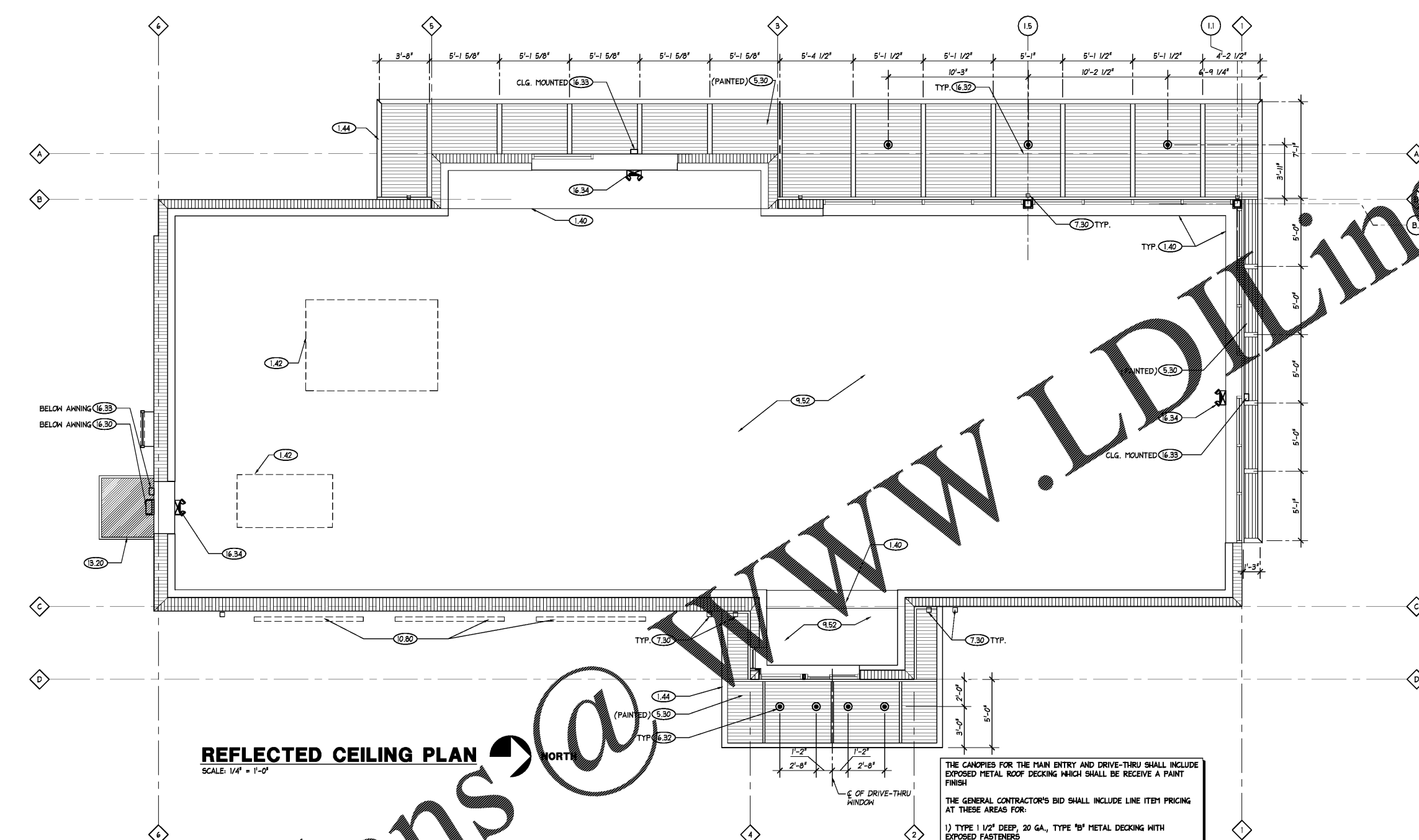


REFER TO SHEET A0.3 FOR KEYNOTE SCHEDULE



REFLECTED CEILING PLAN
SCALE: 1/4" = 1'-0"

NORTH

THE CANOPIES FOR THE MAIN ENTRY AND DRIVE-THRU SHALL INCLUDE EXPOSED METAL ROOF DECKING WHICH SHALL BE RECEIVE A PAINT FINISH

THE GENERAL CONTRACTOR'S BID SHALL INCLUDE LINE ITEM PRICING AT THESE AREAS FOR:

- 1) TYPE 1 1/2" DEEP, 20 GA., TYPE 'B' METAL DECKING WITH EXPOSED FASTENERS
- 2) EPICORE ER2R-20 METAL DECKING WITH CONCEALED FASTENERS

REFER TO STRUCTURAL DRAWINGS

REFLECTED CEILING LEGEND

SYMBOL	DESCRIPTION	REMARKS
○	CEILING MOUNTED LIGHTING	REFER TO ELECTRICAL DRAWINGS FOR LIGHTING SPECIFICATIONS
⊠	EMERGENCY/EXIT LIGHT COMBINATION FIXTURE	REFER TO ELECTRICAL DRAWINGS FOR LIGHTING SPECIFICATIONS AND LOCATIONS
□	EXTERIOR EMERGENCY LIGHT FIXTURE, WALL OR CEILING MOUNTED	REFER TO ELECTRICAL DRAWINGS FOR LIGHTING SPECIFICATIONS. SEE ALSO EXTERIOR ELEVATIONS

GENERAL NOTES

1. REFER TO ELECTRICAL DRAWINGS FOR ALL LIGHTING SPECIFICATIONS AND LOCATIONS OF EMERGENCY LIGHTING
2. REFER TO MECHANICAL PLANS FOR ROOFTOP EQUIPMENT AND DROPS
3. REFER TO ELECTRICAL DRAWINGS FOR ELECTRIC POWER SUPPLY / RECEPTACLES ABOVE STOREFRONT OPENINGS AND THE BUILDING EXTERIOR FOR WALL MOUNTED SIGNAGE. REFER ALSO TO THE EXTERIOR ELEVATIONS
4. REFER TO SHEET A4.1 FOR HEAD, JAMB AND SILL DETAILS

FWH Architects
LIC.# AR0003300
33 Grand Blvd. Suite 201
Holiday, Florida 34690
Ph. 727. 815. 3336
Fax 727. 815. 3337

brightwork
real estate
1708 WEST SWANN AVE, SUITE 300
TAMPA, FL 33609
PHONE: 813.874.1700

TO THE BEST OF THE KNOWLEDGE OF THE ARCHITECTS AND ENGINEERS, PLANS AND SPECIFICATIONS COMPLY WITH THE APPLICABLE MINIMUM BUILDING CODES AND THE APPLICABLE MINIMUM FIRE SAFETY STANDARDS

GUY F. FABER
FL License No. AR0015323

no.	date	revision descriptions

STARBUCKS SHELL CONSTRUCTION
2500 MONUMENT ROAD
JACKSONVILLE, FL

12.13.17
date
17047
comm. no.

REFLECTED CEILING PLAN

A2.0

Order Plans @

WWW.LDOnline.com