

REFER TO SHEET A0.3 FOR KEYNOTE SCHEDULE

TO THE FULLEST EXTENT POSSIBLE, COMPONENTS OF THE WALL SECTIONS WILL BE MARKED AS 'TYPICAL' (TYP.). WHERE SO, KEYED NOTES WILL NOT BE DUPLICATED FOR COMPONENTS OF LIKE KIND. SHOULD THE CONTRACTOR REQUIRE CLARIFICATION OF ANY SUCH COMPONENT, A REQUEST FOR INFORMATION (RFI) SHALL BE SUBMITTED TO THE ARCHITECT PRIOR TO BID

FWH Architects
LIC.# 00033000
33 Grand Blvd, Suite 201
Holiday, Florida 34690
Ph. 727. 815. 3336
Fax 727. 815. 3337

brightwork real estate
1108 WEST SWANN AVE, SUITE 300
TAMPA, FL 33609
PHONE: 813.874.1700

TO THE BEST OF THE KNOWLEDGE OF THE ARCHITECTS AND ENGINEERS, PLANS AND SPECIFICATIONS COMPLY WITH THE APPLICABLE MINIMUM BUILDING CODES AND THE APPLICABLE MINIMUM FIRE SAFETY STANDARDS

GUY F. FABER
FL License No. AR0015323

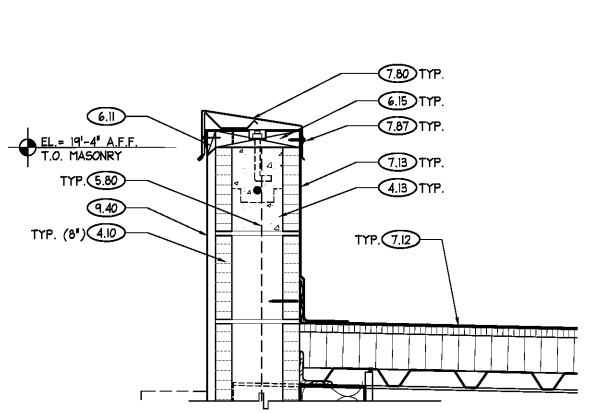
| no. | date | revision descriptions |
|-----|------|-----------------------|
| | | |
| | | |
| | | |
| | | |

STARBUCKS SHELL CONSTRUCTION
2500 MONUMENT ROAD
JACKSONVILLE, FL

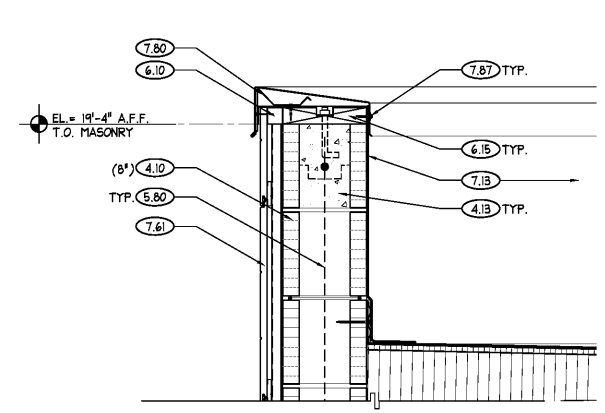
12.13.17
date
17047
comm. no.

ROOF DETAILS

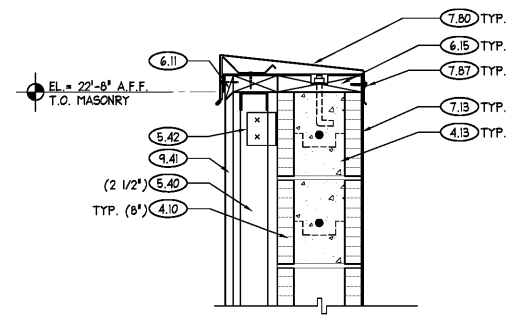
A1.2



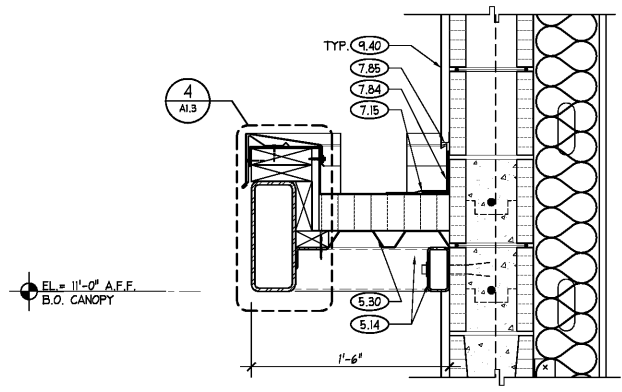
1 PARAPET DETAIL
SCALE: 1/2" = 1'-0"



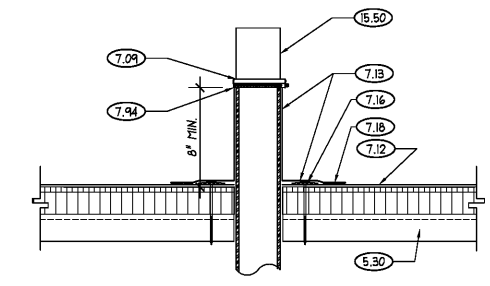
2 PARAPET DETAIL
SCALE: 1/2" = 1'-0"



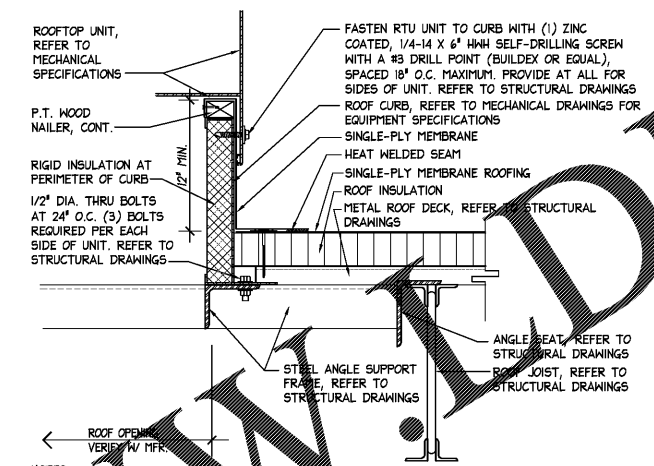
3 PARAPET DETAIL
SCALE: 1/2" = 1'-0"



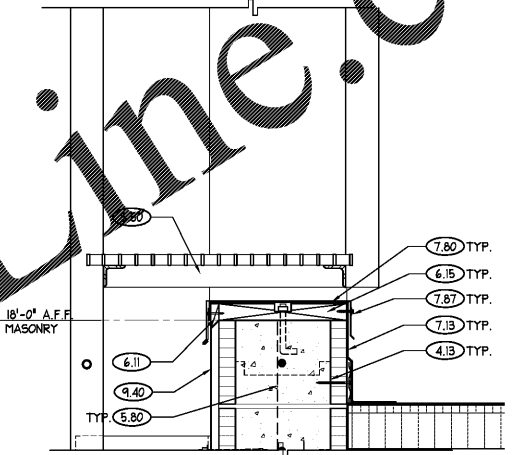
5 CANOPY DETAIL
SCALE: 1/2" = 1'-0"



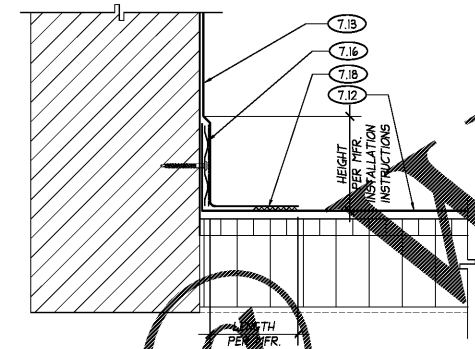
7 PLUMBING VENT DETAIL
SCALE: 1/2" = 1'-0"



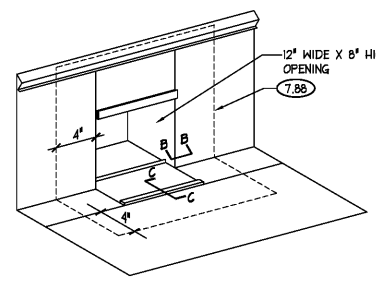
9 TYPICAL ROOFTOP UNIT CURB DETAIL
SCALE: 1/2" = 1'-0"



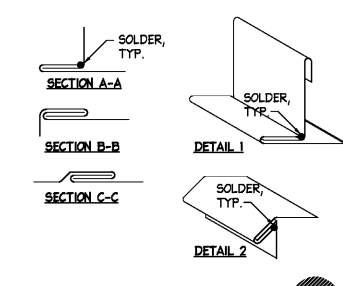
4 PARAPET DETAIL
SCALE: 1/2" = 1'-0"



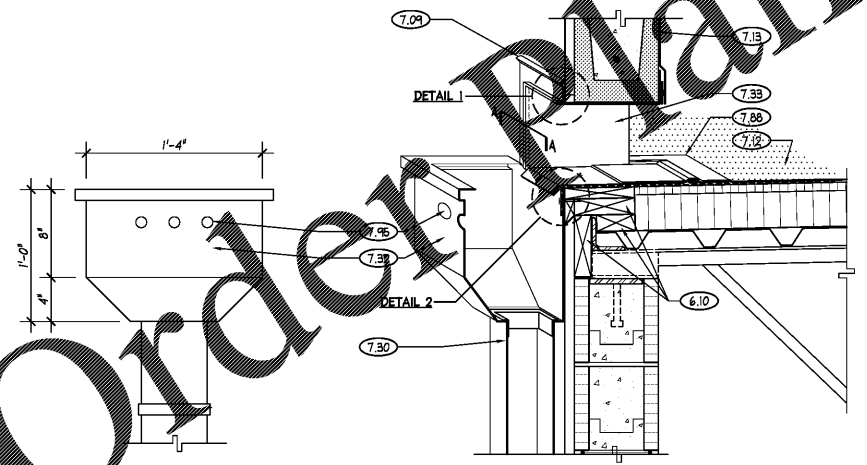
8 TYPICAL PARAPET FLASHING DETAIL
SCALE: 3/4" = 1'-0"



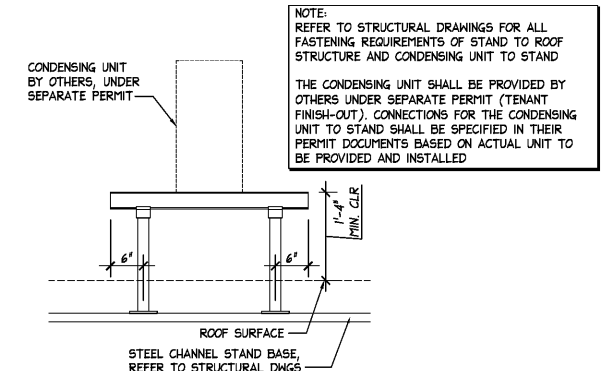
FLASHING DETAIL
NOT TO SCALE



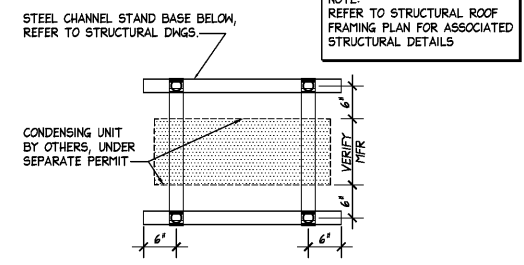
FLASHING DETAILS
NOT TO SCALE



6 TYPICAL SCUPPER DETAILS
SCALE: 1/2" = 1'-0"

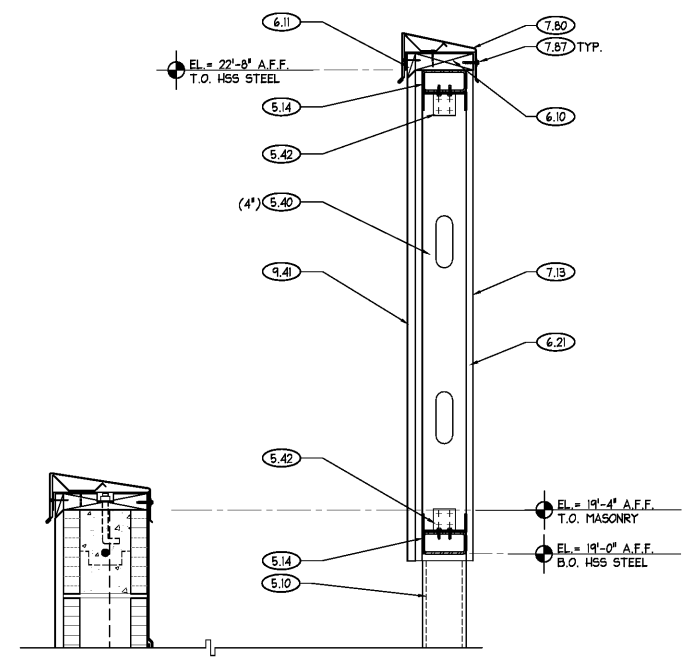


SIDE ELEVATION



PLAN VIEW

10 CONDENSING RACK DETAILS
SCALE: 3/4" = 1'-0"



11 EQUIPMENT SCREEN DETAIL
SCALE: 1/2" = 1'-0"

Order Plans