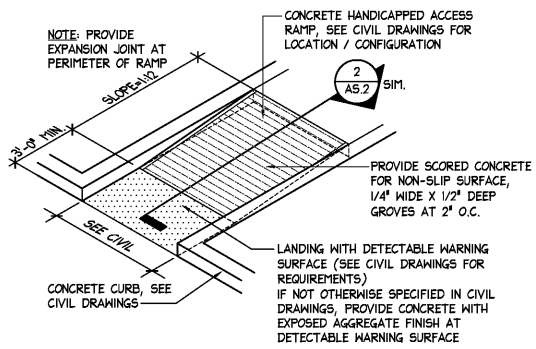
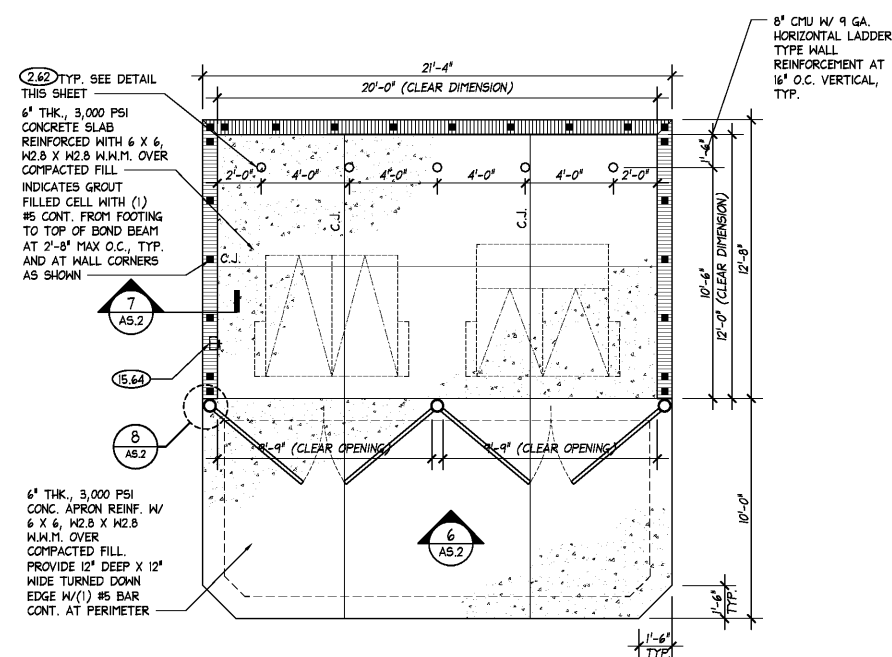


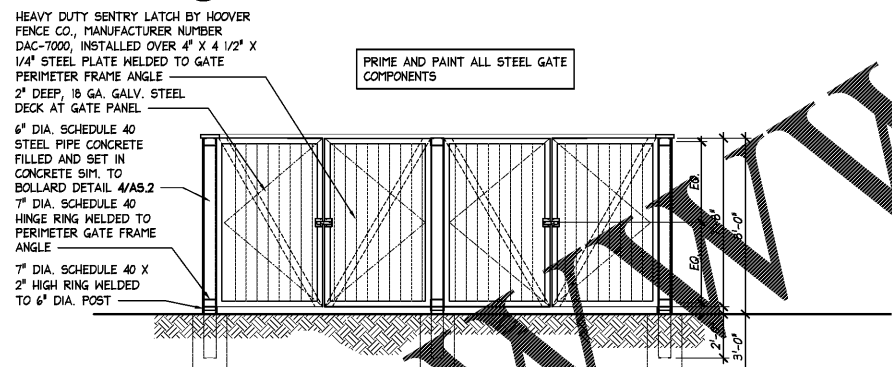
2 HANDICAP RAMP SECTION
SCALE: 3/4" = 1'-0"



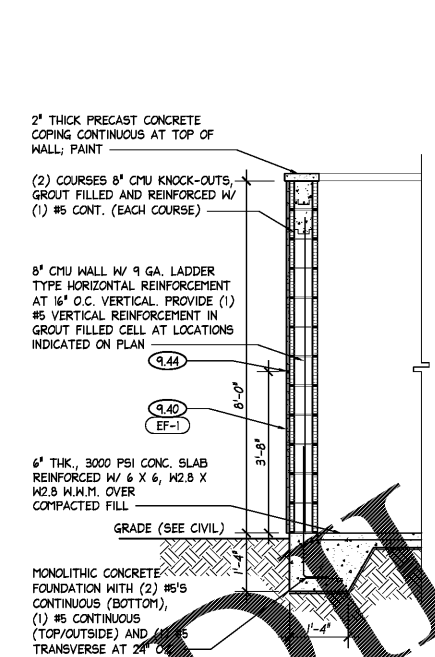
3 HANDICAP RAMP SECTION
NOT TO SCALE



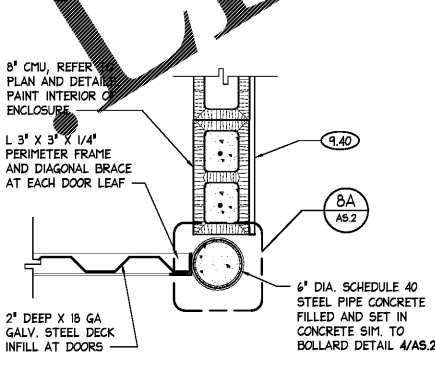
5 DUMPSTER ENCLOSURE PLAN
SCALE: 1/4" = 1'-0"



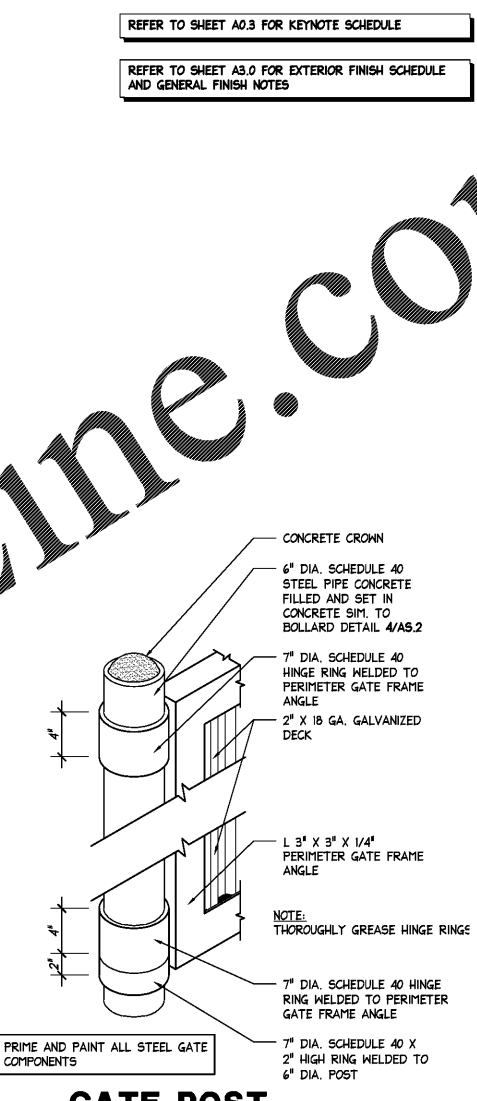
6 DUMPSTER ELEVATION
SCALE: 1/4" = 1'-0"



7 DUMPSTER SECTION
SCALE: 1/2" = 1'-0"



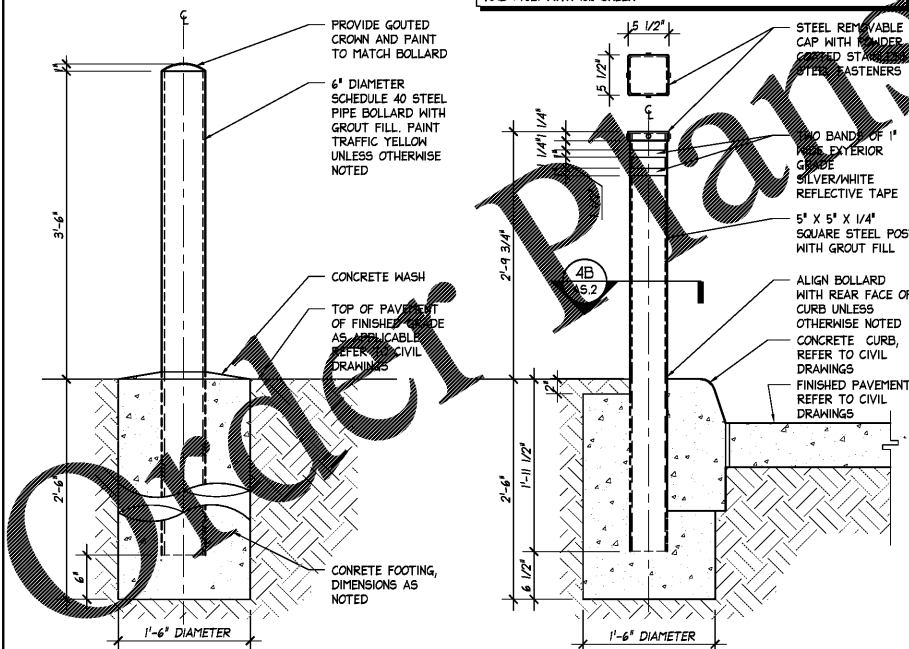
8 GATE POST DETAIL
SCALE: 1" = 1'-0"



8A GATE POST ISOMETRIC DETAIL
SCALE: 1" = 1'-0"

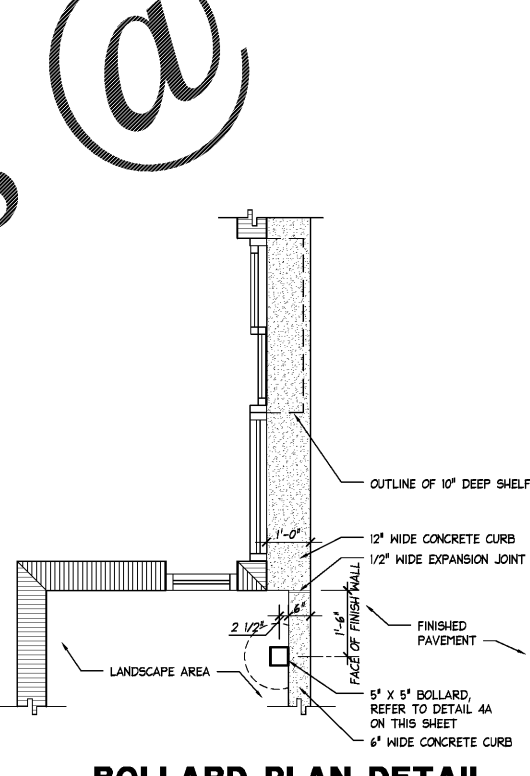
SQUARE BOLLARDS AT THE DRIVE-THRU LANE SHALL BE PROVIDED AND INSTALLED BY THE GENERAL CONTRACTOR. THESE BOLLARDS SHALL BE MANUFACTURED BY DSA/PHOTOTECH, TEL: (310)537-5000, EMAIL: PHUBBELL@DSAPHOTOTECH.COM. THE GENERAL CONTRACTOR SHALL OBTAIN PRICING PRIOR TO SUBMISSION OF BID.

SQUARE BOLLARDS SHALL BE PROVIDED WITH A PAINT FINISH, BLACK RAL #7021 WITH 10% SHEEN

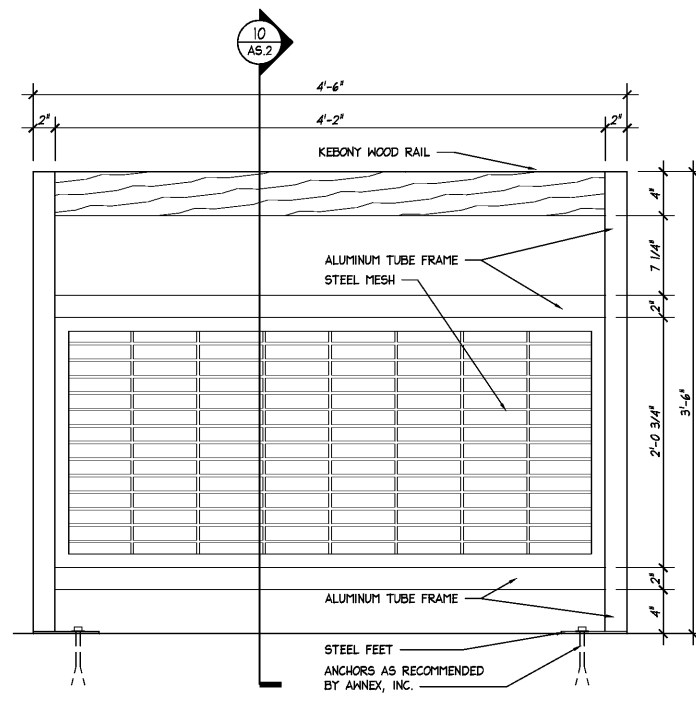


4 BOLLARD DETAIL
SCALE: 1" = 1'-0"

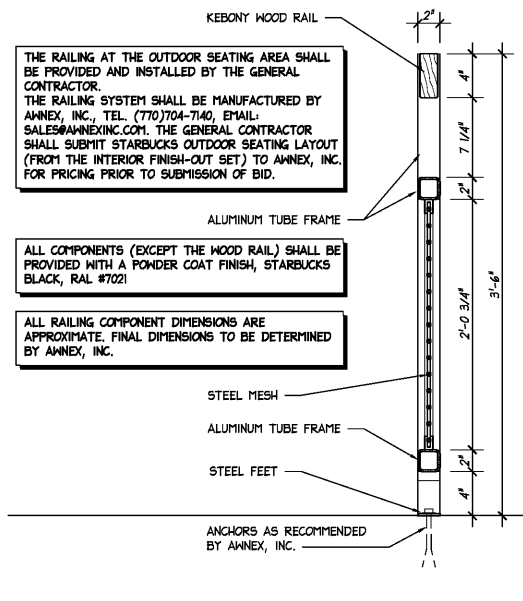
4A BOLLARD DETAIL
SCALE: 1" = 1'-0"



4B BOLLARD PLAN DETAIL AT DRIVE-THRU WINDOW
SCALE: 1/2" = 1'-0"



9 RAILING ELEVATION
SCALE: 1 1/2" = 1'-0"



10 RAILING SECTION
SCALE: 1 1/2" = 1'-0"

THE RAILING AT THE OUTDOOR SEATING AREA SHALL BE PROVIDED AND INSTALLED BY THE GENERAL CONTRACTOR. THE RAILING SYSTEM SHALL BE MANUFACTURED BY ANNEX, INC., TEL: (770)704-7140, EMAIL: SALES@ANNEX.COM. THE GENERAL CONTRACTOR SHALL SUBMIT STARBUCKS OUTDOOR SEATING LAYOUT (FROM THE INTERIOR FINISH-OUT SET) TO ANNEX, INC. FOR PRICING PRIOR TO SUBMISSION OF BID.

ALL COMPONENTS (EXCEPT THE WOOD RAIL) SHALL BE PROVIDED WITH A POWDER COAT FINISH, STARBUCKS BLACK, RAL #7021

ALL RAILING COMPONENT DIMENSIONS ARE APPROXIMATE. FINAL DIMENSIONS TO BE DETERMINED BY ANNEX, INC.

FWH Architects
LIC.# 0003300
3300 Grand Blvd. Suite 201
Holiday, Florida 34690
Ph. 727. 815. 3336
Fax 727. 815. 3337

brightwork real estate
1708 WEST SWANN AVE. SUITE 200
TAMPA, FL 33609
PHONE: 813.874.1700

TO THE BEST OF THE KNOWLEDGE OF THE ARCHITECTS AND ENGINEERS, PLANS AND SPECIFICATIONS COMPLY WITH THE APPLICABLE MINIMUM BUILDING CODES AND THE APPLICABLE MINIMUM FIRE SAFETY STANDARDS

GUY F. FABER
FL License No. AR0015323

| no. | date | revision descriptions |
|-----|------|-----------------------|
| | | |
| | | |
| | | |
| | | |

STARBUCKS SHELL CONSTRUCTION
2500 MONUMENT ROAD
JACKSONVILLE, FL

12.13.17
date

17047
comm. no.

MISCELLANEOUS SITE DETAILS

AS.2