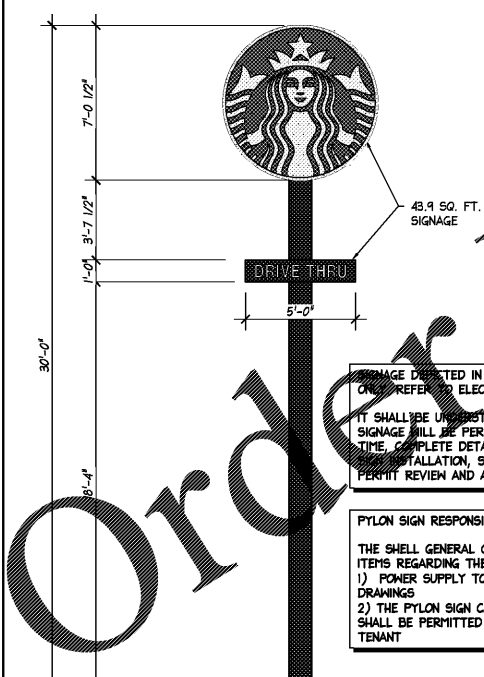


ARCHITECTURAL SITE PLAN

SCALE: 1/16" = 1'-0"



3 PYLON SIGN DETAIL

SCALE: 1/4" = 1'-0"

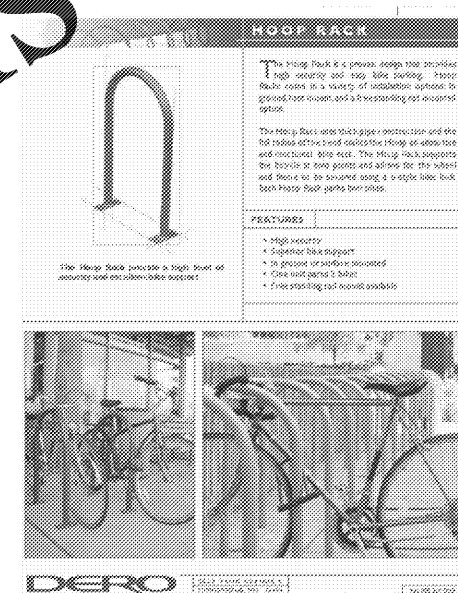
ALL DIMENSIONS LISTED IN THESE DOCUMENTS ARE FOR COORDINATION PURPOSES ONLY. REFER TO ELECTRICAL DRAWINGS WHERE APPLICABLE.

IT SHALL BE UNDERSTOOD THAT ALL EXTERIOR BUILDING MOUNTED AND SITE SIGNAGE WILL BE PERMITTED SEPARATELY BY THE SIGN VENDOR. AT THAT TIME, COMPLETE DETAILS INCLUDING, BUT NOT LIMITED TO, SIGN FABRICATION, INSTALLATION, SIGN AREA AND QUANTITIES, ETC. WILL BE SUBMITTED FOR PERMIT REVIEW AND APPROVAL PRIOR TO COMMENCEMENT OF WORK.

PYLON SIGN RESPONSIBILITIES:

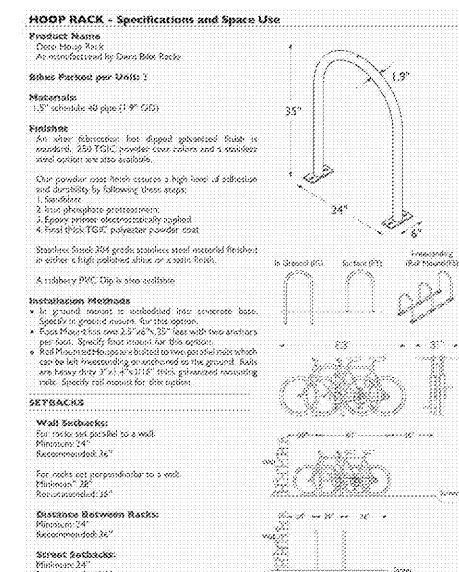
THE SHELL GENERAL CONTRACTOR SHALL BE RESPONSIBLE FOR THE FOLLOWING ITEMS REGARDING THE PYLON SIGN INCLUDING THE FOLLOWING:

- 1) POWER SUPPLY TO THE PYLON SIGN AS SPECIFIED IN THE ELECTRICAL DRAWINGS
- 2) THE PYLON SIGN CABINET (INTERNALLY ILLUMINATED) AND FOUNDATION SHALL BE PERMITTED AND CONSTRUCTED BY A SIGN COMPANY ENGAGED BY THE TENANT



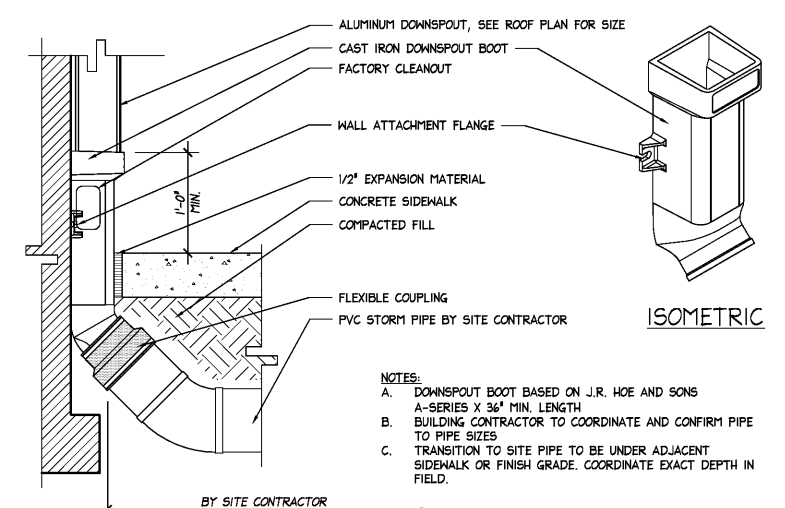
2 BIKE RACK SPECIFICATIONS

NO SCALE



1 DOWNSPOUT CONNECTION DETAIL

SCALE: 1/2" = 1'-0"

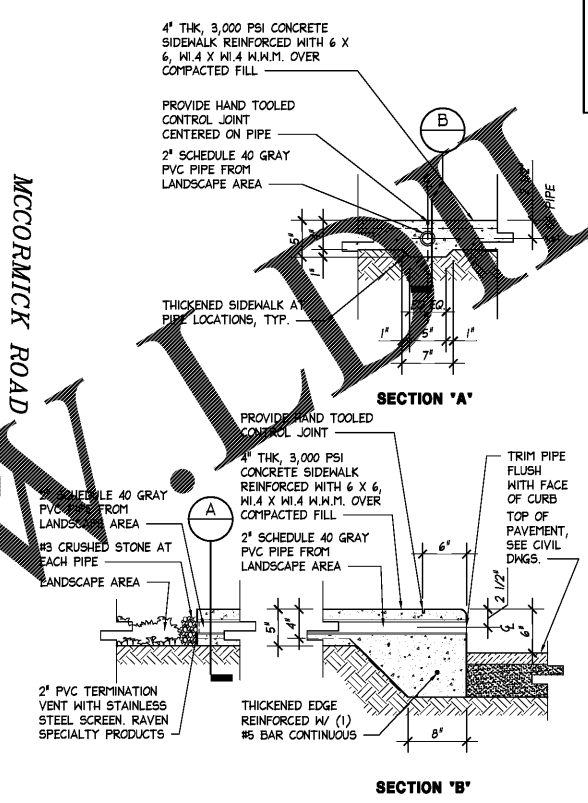


NOTES:

- A. DOWNSPOUT BOOT BASED ON J.R. HOE AND SONS A-SERIES X 36" MIN. LENGTH
- B. BUILDING CONTRACTOR TO COORDINATE AND CONFIRM PIPE TO PIPE SIZES
- C. TRANSITION TO SITE PIPE TO BE UNDER ADJACENT SIDEWALK OR FINISH GRADE. COORDINATE EXACT DEPTH IN FIELD.

4 SIDEWALK DRAIN DETAILS

SCALE: 1/2" = 1'-0"



GENERAL NOTES

- SEE REQUIREMENTS FOR EXTERIOR CONCRETE ON THIS SHEET
 - AT THE BUILDING EXTERIOR, THE GC SHALL BE RESPONSIBLE FOR ALL SUB-GRADE ELECTRICAL CONDUIT AND FOUNDATIONS (INCLUDING ANCHOR BOLTS) FOR STARBUCK'S DRIVE-THRU EQUIPMENT AND MISCELLANEOUS SITE ITEMS INCLUDING, BUT NOT LIMITED TO, DIRECTIONAL SIGNAGE, MENU-BOARDS, DETECTOR LOOP, BOLLARDS AND HEIGHT RESTRICTION BAR. REFER TO ELECTRICAL DRAWINGS FOR SPECIFIC REQUIREMENTS FOR CONDUIT RUNS
- THE GC SHALL OBTAIN A COMPLETE AND CURRENT SET OF STARBUCK'S INTERIOR FINISH-OUT PLANS. THESE DOCUMENTS SHALL GOVERN ALL DETERMINING PRECISE LOCATIONS FOR STARBUCK'S DRIVE-THRU EQUIPMENT AND MISCELLANEOUS SITE ITEMS. DIMENSIONS REQUIRED TO LOCATE THESE ITEMS HAVE BEEN INTENTIONALLY OMITTED IN THESE CONSTRUCTION DOCUMENTS TO AVOID POTENTIAL CONFLICTS WITH STARBUCK'S CONSTRUCTION DOCUMENTS. IN ADDITION, THE STARBUCK'S INTERIOR FINISH-OUT PLANS WILL OBTAIN FOUNDATION DETAILS (INCLUDING ANCHOR BOLTS) AND SPECIFICATIONS FOR THE DRIVE-THRU EQUIPMENT AND MISCELLANEOUS SITE ITEMS. FOR REASONS SIMILAR TO THOSE STATED ABOVE, THESE DETAILS HAVE BEEN OMITTED FROM THE SHELL DOCUMENTS, WHERE APPLICABLE. THE FOUNDATION (INCLUDING ANCHOR BOLTS) ARE, HOWEVER, THE RESPONSIBILITY OF THE SHELL GENERAL CONTRACTOR.
- REFER TO CIVIL DRAWINGS FOR THE EXACT DIMENSIONING CONCERNING BUILDING AND SITE LAYOUT EXCEPT THIS NOTED ABOVE
 - REFER TO CIVIL DRAWINGS FOR UTILITY SERVICES BEING BROUGHT TO THE BUILDING

REFER TO SHEET A0.3 FOR EXTERIOR FINISH SCHEDULE AND GENERAL FINISH NOTES

DOWNSPOUT REQUIREMENTS:

ALL DOWNSPOUTS EXTENDING TO GRADE SHALL BE CONNECTED TO THE UNDERGROUND STORM SEWER UNLESS OTHERWISE NOTED. REFER TO UTILITY AND SIDEWALK PLAN ON THIS SHEET. REFER TO CIVIL DRAWINGS (UNDER SEPARATE PERMIT) FOR STORM PIPE SUB-OUTS

A CAST ALUMINUM TRANSITION BOOT WITH CLEAN OUT SHALL BE PROVIDED PER THE DETAIL PROVIDED OR APPROVED EQUIVALENT

THE GENERAL CONTRACTOR SHALL CLOSELY COORDINATE LOCATIONS OF UNDERGROUND PIPING TO PRECISELY ALIGN WITH THE ROOF SCUPPERS AND DOWNSPOUTS AT THE BUILDING

REQUIREMENTS FOR EXTERIOR CONCRETE:

DRIVE-THRU LANE: SHALL BE MINIMUM 6" THICK, 3,000 PSI POURED CONCRETE REINFORCED WITH 6" X 6", #2.8 X #2.8 W.M. REFER TO CIVIL DRAWINGS FOR GRADING. CONCRETE TO RECEIVE INTEGRAL CONCRETE COLOR, NUMBER CC150/6 AS MANUFACTURED BY INCRETE SYSTEMS. INSTALL SAWCUT CONCRETE CONTROL JOINTS, 1/8" WIDE X 1 1/2" DEEP, AT 15'-0" O.C. MAX. EACH MAY (AREA NOT TO EXCEED 225 SQ. FT.).

PERIMETER SIDEWALK: SHALL BE A MINIMUM OF 4" THICK, 3,000 PSI CONCRETE REINFORCED WITH 6" X 6", #1.4 X #1.4 W.M. AND 1'-0" DEEP X 8" WIDE THICKENED EDGE. NATURAL GRAY COLOR. SURFACE TO RECEIVE MEDIUM BROOM FINISH. RETEEL (WITH HAND EDGER) ALL CONTROL JOINTS AND EXPANSION JOINTS AFTER BROOM FINISHING TO ACHIEVE 'PICTURE FRAME' IN CONCRETE. THIS SHALL INCLUDE ALL ABUTMENTS TO WALLS, CURBS, COLUMNS, ETC.

SIDEWALK CONTROL JOINTS SHALL BE SEPARATED BY NO MORE THAN 5'-0" IN EITHER DIRECTION WITH PRE-MOLDED EXPANSION JOINTS LOCATED EVERY 20'-0" MAX.

HANDICAP PARKING AREA: SHALL BE MINIMUM 6" THICK, 3,000 PSI POURED CONCRETE REINFORCED WITH 6" X 6", #2.8 X #2.8 W.M. PROVIDE 1 1/2" SLOPE (2% MAX.). CONCRETE TO RECEIVE INTEGRAL CONCRETE COLOR, NUMBER CC150/6 AS MANUFACTURED BY INCRETE SYSTEMS. PROVIDE 18" X 18" CHAMFER AT CORNERS.

DOMESTIC WATER SERVICE REQUIREMENTS:

THE DOMESTIC WATER SERVICE SHALL BE A MINIMUM OF 50 PSI AND NO GREATER THAN 65 PSI DYNAMIC PRESSURE AT THE POINT OF BUILDING ENTRY. IF THE SERVICE STATIC IS OVER 65 PSI, A PRESSURE REDUCING VALVE TO BE PROVIDED BY THE SHELL GENERAL CONTRACTOR. IF THE PRESSURE IS UNDER 50 PSI AT THE POINT OF ENTRY, A BOOSTER PUMP AND SURGE TANK SHALL BE PROVIDED AND INSTALLED. IMMEDIATELY UPON INSTALLATION OF THE WATER SERVICE TO THE BUILDING, THE PLUMBING CONTRACTOR SHALL PERFORM A PRESSURE TEST. SHOULD THE PRESSURES NOT MEET THE ABOVE STATED CRITERIA, THE GENERAL CONTRACTOR SHALL PROVIDE RESULTS TO THE ARCHITECT AT THE EARLIEST POSSIBLE DATE. THE ARCHITECT WILL THEN PROVIDE THE NECESSARY DESIGN REMEDIES TO THE CONTRACTOR FOR PRICING, PERMIT AND CONSTRUCTION

FWH Architects
 LIC.# A-0003300
 335 Grand Blvd. Suite 201
 Holiday, Florida 34690
 Ph. 727. 815. 3336
 Fax 727. 815. 3337

brightwork real estate
 1108 WEST SWAN AVE. SUITE 300
 TAMPA, FL 33609
 PHONE: 813.841.1700

TO THE BEST OF THE KNOWLEDGE OF THE ARCHITECTS AND ENGINEERS, PLANS AND SPECIFICATIONS COMPLY WITH THE APPLICABLE MINIMUM BUILDING CODES AND THE APPLICABLE MINIMUM FIRE SAFETY STANDARDS

GUY F. FABER
 FL License No. AR0015323

no.	date	revision descriptions

STARBUCKS SHELL CONSTRUCTION
 2500 MONUMENT ROAD
 JACKSONVILLE, FL

12.13.17
 date

17047
 comm. no.

ARCHITECTURAL SITE PLAN

AS.1