

GENERAL NOTES

- EMERGENCY EXIT ILLUMINATION SHALL BE SUPPLIED FROM STORAGE BATTERY THAT IS TO PROVIDE 90 MINUTES OF CONTINUED ILLUMINATION IN CASE OF A PRIMARY POWER LOSS.
- THE BRANCH CIRCUIT FEEDING THE UNIT EQUIPMENT (EMERGENCY LIGHT/EXIT SIGN WITSELF-CONTAINED RECHARGABLE BATTERY) SHALL BE THE SAME BRANCH CIRCUIT AS THAT SERVING THE NORMAL LIGHTING IN THE AREA AND CONNECTED AHEAD OF ANY LOCAL SWITCHES OR TIME CLOCKS AS SHOWN ON PLAN.
- PROVIDE BI-LEVEL SWITCHING IN SALES AREA BY SWITCHING EVERY OTHER LUMINAIRE AND/OR EVERY OTHER ROW OF LUMINAIRES WHEN SHOWN.
- EMERGENCY LUMINAIRES SHALL PROVIDE AN INITIAL AVERAGE ILLUMINATION LEVEL OF AT LEAST 1 FOOT-CANDLE BUT AT ANY POINT IT SHALL NOT BE LESS THAN 0.1 FOOT-CANDLE ALONG THE PATH OF EGRESS AT FLOOR LEVEL.
- AT THE END OF THE REQUIRED EMERGENCY SOURCE DURATION, THE EMERGENCY LUMINAIRES SHALL PROVIDE AN AVERAGE ILLUMINATION LEVEL OF AT LEAST 0.6 FOOT-CANDLE BUT AT ANY POINT IT SHALL NOT BE LESS THAN 0.06 FOOT-CANDLE ALONG THE PATH OF EGRESS AT FLOOR LEVEL.
- THE EMERGENCY ILLUMINATION LEVEL SHALL BE MINIMUM-TO-MAXIMUM EMERGENCY ILLUMINATION UNIFORMITY RATIO SHALL NOT EXCEED 40:1.
- CONDUIT AND WIRING IN AREAS WHERE EXPOSED SHALL BE ROUTED AT 90 DEGREE ANGLES PERPENDICULAR OR PARALLEL TO JOISTS. COORDINATE PAINTING OF CONDUIT WITH ARCHITECTURAL FINISHES.
SEE LEVITON COMPONENTS SCHEDULE ON SHEET E1.5 FOR DETAILS

KEYED NOTES

- OCCUPANCY SENSOR 'A', RE-6/E1.5, 442", TYP.
- OCCUPANCY SENSOR 'B', RE-5/E1.5, TYP.
- LEVITON MODEL OSC20-MOW OCCUPANCY/VACANCY SENSOR (OS), WITH LEVITON MODEL OPP20-D2 POWER PACK (PP) LOCATED IN CEILING PLENUM.
- 13W LED COOLER DOOR LIGHTS PROVIDED AND INSTALLED BY COOLER DOOR MANUFACTURER, E.C. TO PROVIDE WIRING FOR COOLER/ FREEZER DOOR LIGHTS AND CONNECT TO MANUFACTURER SUPPLIED JUNCTION BOX.
- MOUNT AT 9"-4" TO BOTTOM, RE-4/E1.6. TYPICAL OF ALL LOCATIONS.
- REFER TO RECESSED FIXTURE MOUNTING DETAIL, RE: 3/E1.5, TYP.
- LINE VOLTAGE WIRING AT THE STOREFRONT IN OPEN CEILING AREAS SHALL BE ROUTED THROUGH A NONMETALLIC RACEWAY SYSTEM. THERE SHALL BE NO EXPOSED WIRING IN THE SALES AREA. RACEWAY SHALL RUN ACROSS THE FRONT WALL AND DOWN TO THE EXIT SIGN. RE-5/E1.4 FOR MORE INFORMATION. OWNER TO PROVIDE LEGRAND 400 SERIES SYSTEM WITH ALL FITTINGS AND DEVICE BOXES REQUIRED FOR CONNECTION TO EXIT SIGN.
- LEVITON MODEL RLVSW-4LW 4-BUTTON WALL MOUNTED CONTROL FOR MANUAL ON/OFF/DIMMING. RE: 2/E1.5 FOR FACTORY WIRING DIAGRAM. USE SEPARATE SWITCHES FOR EACH ZONE.
- LEVITON MODEL PCSKY PHOTOCELL (PC) MOUNTED ON CEILING FOR AUTOMATIC DAYLIGHT CONTROL. RE: 2/E1.5 FOR FACTORY WIRING DIAGRAM.
- LEVITON MODEL MZD30-101 3-ZONE ROOM CONTROLLER LOCATED IN CEILING PLENUM NEAR MANAGER'S OFFICE.
- LEVITON MODEL ODCOP-00W WINDOW DAYLIGHT SENSOR.

SEAL:

06.21.17 PEER REVIEW COMMENTS

NO DATE REMARKS

REVISIONS



BID SET
JANUARY 8, 2018

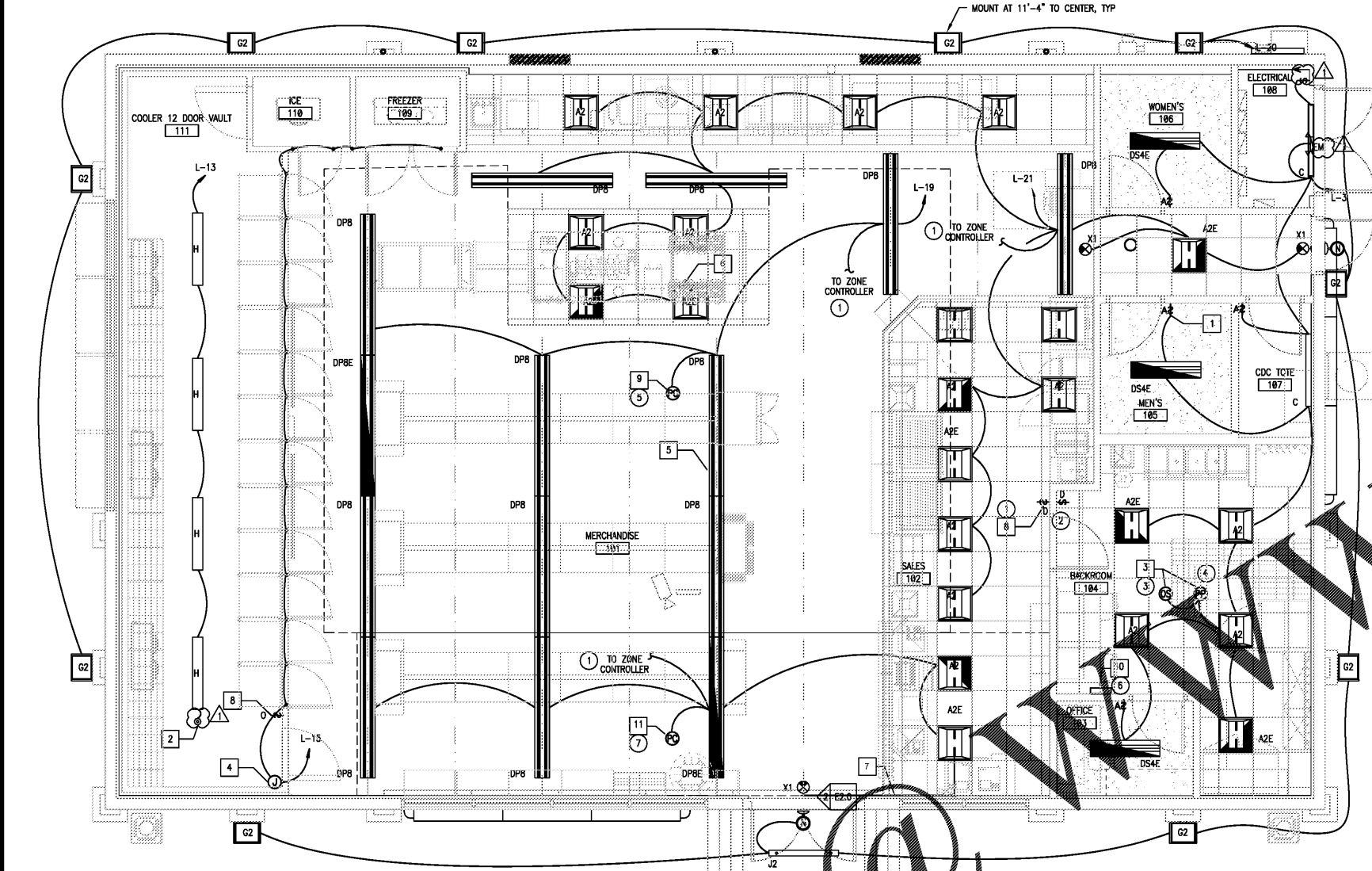
7-ELEVEN
STORE #32810

5544 RONALD REAGAN PARKWAY
DAVENPORT, FL
33896

PROJECT NO: 2016.0305
DATE: MAY 31, 2017

E2.0
LIGHTING PLAN

CHECKED: SN DRAWN: VLD



1 LIGHTING PLAN

1" = 1'-0"



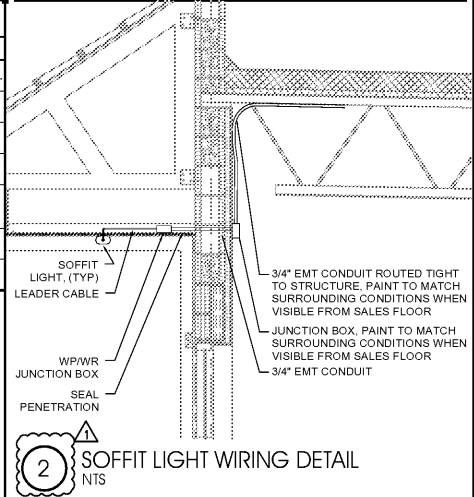
LIGHTING FIXTURE SCHEDULE

TYPE	MANUFACTURER	CATALOG NUMBER	VOLTS/PHASE	WATTS	LAMP TYPE	QTY	MOUNTING	DESCRIPTION	QTY
A2	GE	BT-22-0-A3-A-V-WHITE-S	120/277V, 1		LED	1	RECESSED	LED 2 X 2 RECESSED TROFFER; 0-10V; 4000K	15
A2E	GE	BT-22-0-A3-A-V-WHITE-EL-S	120/277V, 1		LED	1	RECESSED	LED 2 X 2 RECESSED TROFFER W/ EMERGENCY BACK-UP; 0-10V; 4000K;	6
C	PHILIPS	LF4EZ380ULAG	120/277V, 1		LED	1	SURFACE	LED SURFACE LINEAR 4"; 4000K	2
DP4	GE	ISC40A3MWHTEWP	120/277V, 1	33	LED	1	PENDANT	LED 1X4 SUSPENDED CONTINUOUS; 4000K	0
DP8	GE	ISC40A3MWHTEWP	120/277V, 1	73	LED	1	PENDANT	LED 1X8 SUSPENDED CONTINUOUS; 4000K	12
DP8E	GE	ISC40A3MWHTEWP	120/277V, 1	73	LED	1	PENDANT	LED 1X8 SUSPENDED CONTINUOUS W/ EMERGENCY BACK-UP; 4000K	2
DS4E	CREZ	CR-LE-SE-120V-EM-4-S	120/277V, 1	40	LED	1	SURFACE	1X4 SURFACE MOUNT LIGHT W EMERGENCY BACK-UP; 4000K	3
EM	PHILIPS	EM-200-100-000	120/1	11	LED	2	UNIVERSAL	EMERGENCY FIXTURE W/ 90 MINUTE BATTERY BACKUP	1
G2	GE	EM-200-100-000	120/277V, 1	51	LED	1	WALL	LED WALL PACK; 5000K	10
H	PHILIPS	DWA35LE-100V	120/277V, 1	32	LED	1	SURFACE	LED INTEGRATED; SURFACE MOUNT 1X4; "GASKETED"; 4000K	4
J8	GE	EW109641	120/277V, 1	36	LED	1	SURFACE	LED BATTEN 96"; 4000K	4
J2	GE	EW102441BA	120/277V, 1	9	LED	1	SURFACE	LED BATTEN 24"; 4000K	4
J4	GE	EW104841BA	120/277V, 1	16	LED	1	SURFACE	LED BATTEN 48"; 4000K	2
N	PHILIPS	EM-200-100-000	120/277V, 1	24	LED	8	WALL	LED WALL MOUNT; EMERGENCY BATTERY BACK-UP; 4500K	2
X1	PHILIPS	EM-200-100-000	120/277V, 1	2	LED	1	UNIVERSAL	LED EXIT (RED) LETTERS; EMERGENCY BATTERY BACK-UP	3

INTERIOR CEILING LIGHTING FIXTURE PACKAGE
UNLESS OTHERWISE NOTED 7-ELEVEN WALL FIXTURES SHALL BE THE INTERIOR AND EXTERIOR LIGHTING FIXTURE PACKAGE-- (INSTALLED BY G.C.)
LIGHT SWITCHES TO BE MULTI-TECHNOLOGY DIMMING SWITCHES TO BE MULTI-TECHNOLOGY DIMMING SWITCH SENSOR 200 SQ. FT. MAJOR MOTION COVERAGE, 400 SQ. FT., MINOR MOTION COVERAGE, 800W@120V INC, 1200VA@120V FL, 2700VA@277V FL, 1/4HP@120V MOTOR, COMMERCIAL GRADE - WHITE CALIFORNIA TITLE 24 COMPLIANT. ALL TO BE PROVIDED AND INSTALLED BY G.C.

LEVITON COMPONENTS SCHEDULE

TYPE	MANUFACTURER	PART NUMBER	DESCRIPTION
1	LEVITON	RLVSW-4LW	4-BUTTON WALL MOUNTED CONTROL FOR MANUAL ON/OFF/DIMMING LOCATED BY ENTRANCE DOOR TO BACK ROOM.
2	LEVITON	DS710-10Z	DIMMER SWITCH LOCATED IN STOCKROOM FOR MANUAL CONTROL OF STOCKROOM LIGHTING.
3	LEVITON	OSC20-MOW	OCCUPANCY/VACANCY SENSOR CEILING MOUNTED IN STOCKROOM FOR AUTOMATIC CONTROL OF STOCKROOM LIGHTING.
4	LEVITON	OPP20-D2	POWER PACK LOCATED IN CEILING PLENUM NEAR MANAGER'S OFFICE.
5	LEVITON	PCSKY	PHOTOCELL (PC) MOUNTED ON CEILING IN SKYLIGHT ZONE FOR AUTOMATIC DAYLIGHT CONTROL.
6	LEVITON	MZD30-102	3-ZONE ROOM CONTROLLER LOCATED IN CEILING PLENUM NEAR MANAGER'S OFFICE.
7	LEVITON	ODCOP-00W	WINDOW DAYLIGHT SENSOR



2 SOFFIT LIGHT WIRING DETAIL

INTERNET: REVIEWS COPYRIGHTS & OTHER RIGHTS RESTRICTING THESE DOCUMENTS TO THE ORIGINAL SITE OR PURPOSE FOR WHICH THEY WERE PREPARED. REPRODUCTIONS, CHANGES OR ASSIGNMENTS ARE PROHIBITED. COPYRIGHT © 2016