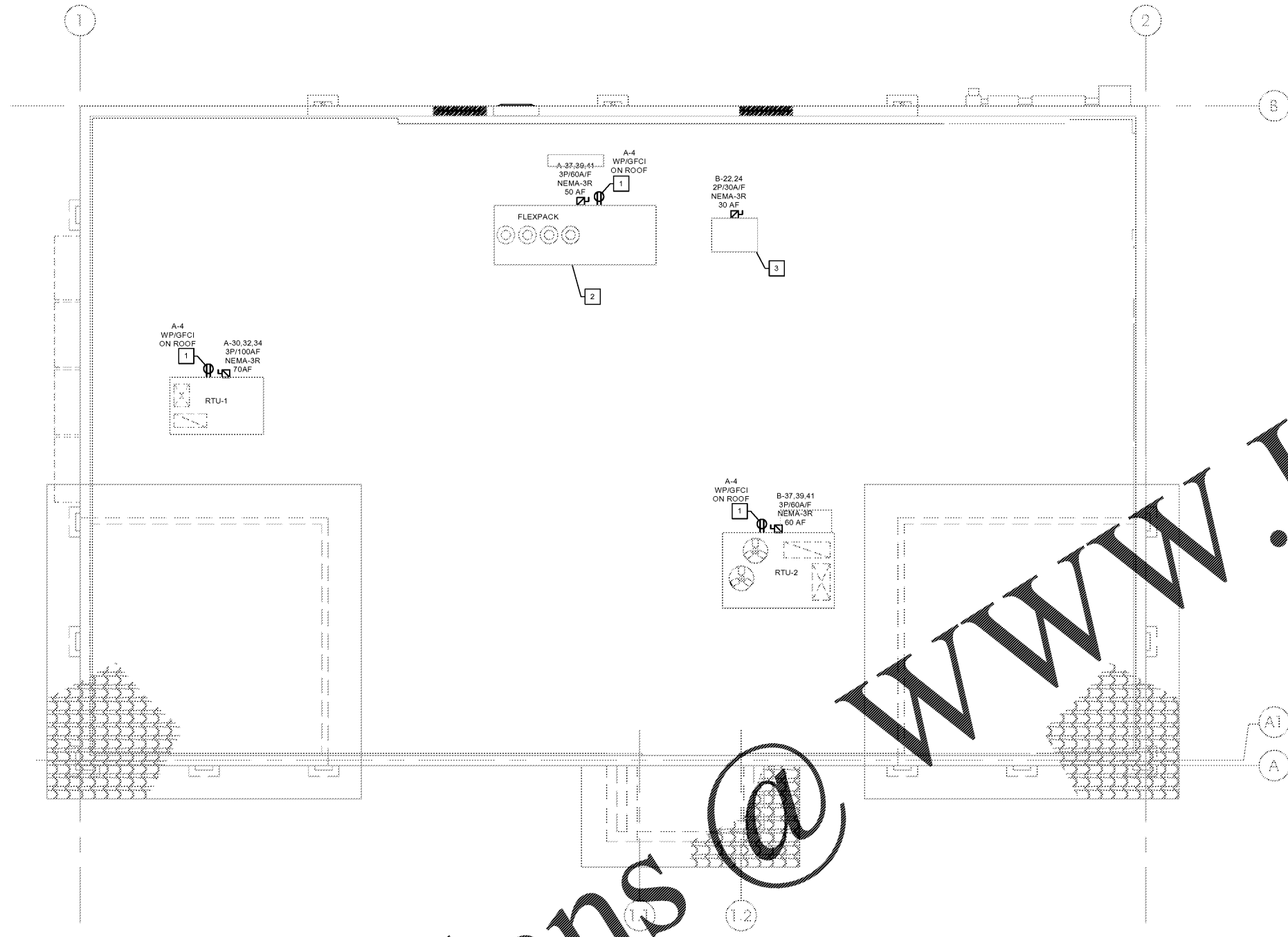


KEYED NOTES

- 1. SERVICE RECEPTACLE, WEATHERPROOF GFCI ON ROOF.
- 2. FLEXPACK UNIT ON ROOF.
- 3. SANDWICH CASE CONDENSING UNIT ON ROOF.

SEAL:

WWW.LDILine.com



1 ELECTRICAL PLAN - HVAC/R POWER

1" = 1'-0"

Order Plans @

NO.	DATE	REVISIONS	REMARKS



BID SET
JANUARY 8, 2018

7-ELEVEN
STORE #32810

5544 RONALD REAGAN PARKWAY
DAVENPORT, FL
33896

PROJECT NO: 2016.0305
DATE: MAY 31, 2017

E1.3
ELECTRICAL HVAC-R PLAN

CHECKED: SN DRAWN: VLD

COPYRIGHT © 2016 INTERPLAN, LLC. REVERSE COPYRIGHT & OTHER RIGHTS RESTRICTING THESE DOCUMENTS TO THE ORIGINAL SITE OR PURPOSE FOR WHICH THEY WERE PREPARED, REPRODUCTIONS, CHANGES OR ASSIGNMENTS ARE PROHIBITED.