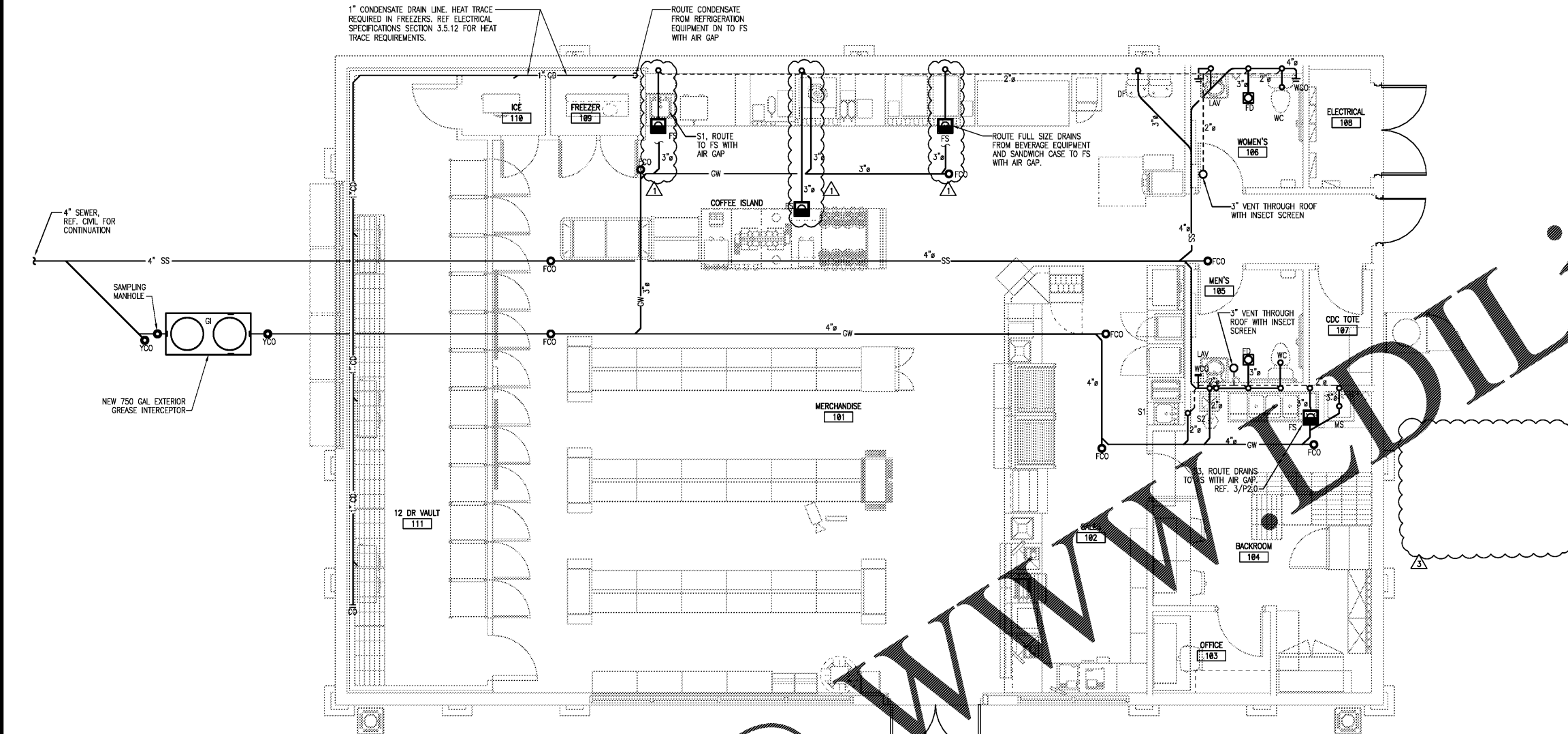


SEAL:

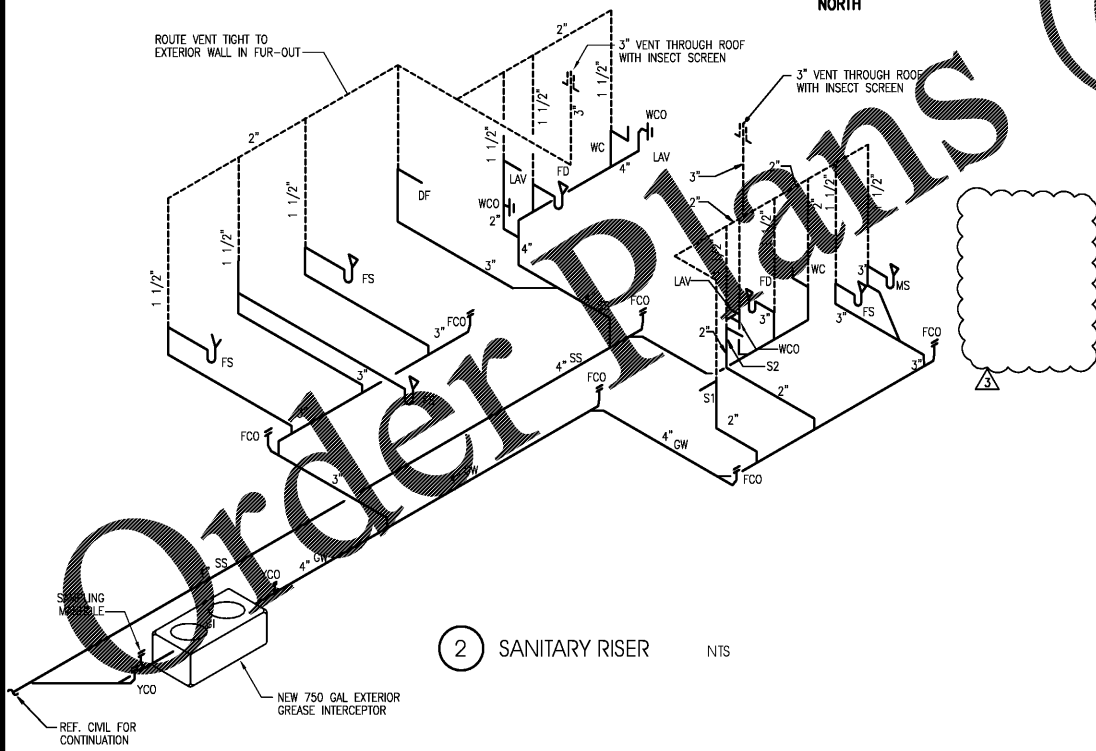
SPECIALTY PLUMBING FIXTURE SCHEDULE					
TAG	FIXTURE	MANUFACTURER	MODEL	DESCRIPTION	NOTES
WHA	WATER HAMMER ARRESTOR	SIoux CHIEF	652-A	CONFORM TO PDI WH-201, ASSE 1010; TEMP TO 250°F, MAX 350 PSIG WORKING PRESSURE	A
TMV	TEMPERATURE MIXING VALVE	WATTS	LFUSG-B-M 1	+/- 3°F UP TO 120°F, WITH BUILT-IN CHECK VALVES, BRASS BODY, AND COMPOSITE THERMOSTAT	
---	TRAP PRIMER	SIoux CHIEF	695	BRONZE PRIMER VALVE WITH REMOVABLE BATHING NETS INTEGRAL VACUUM BREAKER, AND GASKETED ACCESS COVER.	
RPZ	REDUCED PRESSURE BACKFLOW PREVENTER	WILLIAMS	975XL	3" BODY, WITH SHUT-OFF VALVES, Y STRAINER, AND TEST COCKS.	
FD	FLOOR DRAIN	SIoux CHIEF	832-36PNQ	3" LIGHT DUTY DRAIN WITH 7" SQUARE TOP, NICKEL BRONZE RING PVC BODY WITH DRAIN AND 1 1/2" VENT. PROVIDED WITH 3" AND STRAINER.	
FS	FLOOR SINK	SIoux CHIEF	861	WHITE PVC 12" X 12" FLOOR SINK WITH 3/4" HEAVY DUTY PVC HALF GRATE, SEDIMENT BUCKET. PROVIDED WITH 3" DRAIN AND 1 1/2" VENT.	
FCO	FLOOR CLEANOUT	SIoux CHIEF	851	PVC BODY, ROUND HEAVY-DUTY CAST IRON TOP, POLYPROPYLENE OR ABS PLUG, ADJUSTABLE TO FINISH SURFACE	B
YCO	YARD CLEANOUT	SIoux CHIEF	834	DURA-COATED CAST IRON, DOUBLE-FLANGED HOUSING, AND HEAVY-DUTY SCORPION DUCTILE IRON COVER.	B
WCO	WALL CLEANOUT	SIoux CHIEF	873	THREADED, COUNTERSUNK BRONZE CLEANOUT PLUG. PROVIDE DRILLED TAP FOR CENTER SCREW AND STAINLESS STEEL COVER.	

NOTES:  
A. SIZE PER MANUFACTURER'S RECOMMENDATION.  
B. CLEANOUT SHALL BE SAME SIZE AS PIPE BEING SERVED.  
C. THIS SCHEDULE IS COMPREHENSIVE. ALL MARKS MAY OR MAY NOT BE USED ON PLANS.



1 PLUMBING SANITARY PLAN

1/4" = 1'-0"



2 SANITARY RISER

- PLUMBING NOTES**
- NOTES APPLY TO ALL PLUMBING SHEETS.
  - EACH CONTRACTOR IS RESPONSIBLE FOR HAVING THOROUGH KNOWLEDGE OF ALL DRAWINGS AND SPECIFICATIONS AS THEY RELATE TO THIS WORK. NO ADDITIONAL COMPENSATION SHALL BE ALLOWED DUE TO LACK OF THIS KNOWLEDGE.
  - PROVIDE ALL MATERIALS FOR A COMPLETE INSTALLATION IN ALL RESPECTS READY FOR INTENDED USE AND IN STRICT ACCORDANCE WITH STATE AND LOCAL CODES AND MANUFACTURER'S RECOMMENDATIONS.
  - COORDINATE SEWER AND WATER CONNECTIONS WITH CIVIL AND A.H.J. PROVIDE PRESSURE REDUCING VALVE AND BACKFLOW PREVENTER AS SHOWN OR REQUIRED BY A.H.J. VERIFY INVERT AND SLOPE OF INCOMING SANITARY SEWER BEFORE TRENCHING.
  - REFER TO RISER DIAGRAMS AND PLUMBING FIXTURE SCHEDULE FOR ALL PIPING AND PIPE SIZES NOT SHOWN ON PLAN.
  - SANITARY AND STORM SEWER PIPING SHOWN IS BASED ON 1/4" PER FOOT FALL FOR ALL PIPE SMALLER THAN 3" DIAMETER AND 1/8" PER FOOT FALL FOR PIPE 3" DIAMETER AND LARGER.
  - ALL SEWER PIPING BELOW SLAB TO BE 2" DIAMETER MINIMUM.
  - PROVIDE ACCESS DOORS TO ALL CONCEALED VALVES AND CLEAN-OUTS; AND NOT ABOVE AN ACCESSIBLE CEILING.
  - PROVIDE TRAP SEAL PRIMERS AND 1/2" COPPER TUBING CONNECTION TO ALL FLOOR DRAINS AS SHOWN OR AS REQUIRED BY A.H.J. CONTRACTOR SHALL VERIFY REQUIREMENTS.
  - INSTALL V.I.R.'S, EXHAUST FANS, AND FLUES A MINIMUM 5'-0" FROM PARAPET OR OUTSIDE WALL AND 10'-0" MINIMUM FROM EQUIPMENT WITH OUTSIDE AIR INTAKE.
  - INSTALL WATER PIPE ON INSIDE OF EXTERIOR WALL INSULATION TO PREVENT FREEZING.
  - WHEN DEEP FROST LOCATIONS ARE ENCOUNTERED, ROUTE SANITARY LINES UNDER BUILDING AS MUCH AS POSSIBLE.
  - PROVIDE PVC SLEEVE FOR ALL COLD/HOT WATER FLOOR PIPE PENETRATIONS. MAKE SLEEVE LARGE ENOUGH FOR INSULATION. SEAL WITH GRAY MASTIC AND ENSURE OF NO WATER PENETRATIONS.
  - PROVIDE AND INSTALL WATTS 8A VACUUM BREAKER ON ANY THREADED EXTERIOR OR INTERIOR FAUCETS.
  - ALL WATER SHUT-OFF VALVES SHALL BE "BALL LOCK" TYPE. PROVIDE SHUT-OFF VALVES AT EACH TERMINATION POINT OF ASSOCIATED EQUIPMENT.
  - PROVIDE SEISMIC BRACING BASED ON APPROPRIATE SEISMIC ZONE REQUIREMENTS PER LOCAL AND NATIONAL CODES. CONTRACTOR'S RESPONSIBILITY INCLUDES STRUCTURAL ENGINEER'S CERTIFICATION ON DETAILS SUBMITTED FOR PERMITTING.

PLUMBING FIXTURE SCHEDULE								
TAG	FIXTURE	MANUFACTURER	MODEL	CW	HW	WASTE	VENT	DESCRIPTION
WC	WATER CLOSET	AMERICAN STANDARD	CADET 3483.001 (BOWL) 4142.100 (TANK)(L) 4142.801 (TANK)(R)	1/2"	---	4"	2"	FIXTURE AND HARDWARE FURNISHED, INSTALLED BY PLUMBING CONTRACTOR. 12" ROUGH-IN, COLOR: WHITE AMERICAN STANDARD CADET OPEN FRONT SEAT, NO COVER. 17" RIM HEIGHT, FOR HANDICAPPED. PRESSURE ASSISTED 1.1 GPF. MOUNT CONTROLS ON ACCESSIBLE SIDE OF TOILET. CONTRACTOR TO COORDINATE WITH FIXTURE SUPPLIER FOR LEFT/RIGHT HAND FLUSH LEVER TO COMPLY WITH ADA REQUIREMENTS.
LAV	LAVATORY	KOHLER	BRENHAM K-1997-4	1/2"	1/2"	2"	1-1/2"	FAUCET PACKAGE PROVIDED BY OWNER. FIXTURE AND OTHER HARDWARE FURNISHED, INSTALLED BY PLUMBING CONTRACTOR. WALL-MOUNT WITH ZURN 12321 CONCEALED ARM CARRIER, 4" CENTERS WITH CHROME 1&S MODEL EC-3103 MOTION ACTIVATED FAUCET, B-0199-03-NOS AERATOR (0.5 GPM). FAUCET INCLUDES AC/DC CONTROL MODULE W/ INTEGRAL FLOW CONTROL SETTING, TEMPERATURE CONTROL MIXING VALVE. SET TO 105°F. W/ INTEGRAL CHECK VALVES, 18" STAINLESS STEEL FLEXIBLE HOSES. INSTALL KOHLER BRENHAM SHROUD K-1998. REF ARCHITECTURAL DRAWINGS FOR ROUGH-IN ELEVATIONS.
MS	MOP SINK	FIAT	MSB-2424	1/2"	1/2"	3"	1-1/2"	FIXTURE AND HARDWARE FURNISHED, INSTALLED BY PLUMBING CONTRACTOR. NO. 830AA FAUCET WITH INTEGRAL VACUUM BREAKER, NO.832-AAHOSE AND BRACKET, NO.1453BB FLOOR STRAINER AND NO. 899-CC MOP HANGER
S1	HAND SINK	---	---	1/2"	1/2"	1-1/2"	1-1/2"	FIXTURE AND HARDWARE OWNER FURNISHED, INSTALLED BY PLUMBING CONTRACTOR. ADA COMPLIANT, STAINLESS STEEL FIXTURE, BRASS FAUCET & P-TRAP. PROVIDED WITH STOP VALVES, FLEXIBLE SUPPLY RISERS, TRIBURO LAV GUARD 2 PROTECTIVE PIPE COVERS ON EXPOSED HOT WATER AND DRAIN LINES, STOP VALVES AND TEMPERATURE-ACTUATING MIXING VALVE & SET TO 105° F.
S2	HAND SINK	SELECT STAINLESS	PL-SHS-1	1/2"	1/2"	1-1/2"	1-1/2"	FIXTURE AND HARDWARE OWNER FURNISHED, INSTALLED BY PLUMBING CONTRACTOR. ADA COMPLIANT, CUSTOM WALL MOUNT 10" FRONT TO BACK X 14"W X 6"D HAND SINK (PRODUCTION LINE). PROVIDED WITH BRASS FAUCET SUPPLIER PART #B-1148 & P-TRAP. INSTALL TRIBURO LAV GUARD 2 PROTECTIVE PIPE COVERS ON EXPOSED HOT WATER AND DRAIN LINES, STOP VALVES AND TEMPERATURE-ACTUATING MIXING VALVE & SET TO 105° F.
S3	3-COMPARTMENT SINK	TURBO AIR	TSA-3-D1-711	1/2"	1/2"	3"	2"	BOWL SIZE: 12"x19"x12". FIXTURE AND HARDWARE OWNER FURNISHED, INSTALLED BY PLUMBING CONTRACTOR. PROVIDED WITH 1&S MODEL MFBWLN-580R 8" FAUCET (EF-1 ITEM #600), P-TRAP AND STOP VALVES
FPWH	FREEZE-PROOF WALL HYDRANT	JOSAM	71000	3/4"	---	---	---	FIXTURE AND HARDWARE FURNISHED, INSTALLED BY PLUMBING CONTRACTOR. BOX TYPE, CAST BRONZE, INTEGRAL VACUUM BREAKER-BACKFLOW PREVENTER, "I" HANDLE, POLISHED FACE, HINGED LOCKING COVER, BRONZE WALL CASTING, RENEWABLE SEAT, BRONZE OPERATING PARTS, 1" N.P.T. INLET, AND 3/4" H.P.T. OUTLET.
HB	HOSE BIBB	WATTS	SC8	3/4"	---	---	---	FIXTURE AND HARDWARE FURNISHED, INSTALLED BY PLUMBING CONTRACTOR. CAST BRASS THREADED SILCOCK WITH FLANGE CAST IRON HANDWHEEL, AND TAMPER-PROOF VACUUM BREAKER, 3/4" N.P.T. INLET, AND 3/4" H.P.T. OUTLET. PROVIDED WITH 25 FOOT HOSE AND SPRAY GUN. MOUNT 24" AFF.
DF	DRINKING FOUNTAIN	OASIS	PGACSL	1/2"	---	3"	1-1/2"	NEW DRINKING FOUNTAIN TO BE INSTALLED NEW BY PLUMBING CONTRACTOR. SHALL COMPLY WITH ANSI A117.1 AND ADA. SHALL INCLUDE FRONT AND SIDE PUSH PADS TO ACTIVATE THE FLOW OF WATER. BUBBLER SHALL HAVE FLEXIBLE GUARD AND OPERATE BETWEEN 20 AND 120 PSI.

4 11.09.17 UTIL. COORD CHANGES  
3 08.24.17 BLDG. DEPT. COMMENTS  
1 06.21.17 PEER REVIEW COMMENTS  
NO DATE REMARKS



BID SET  
JANUARY 8, 2018

7-ELEVEN  
STORE #32810

5544 RONALD REAGAN PARKWAY  
DAVENPORT, FL  
33896

PROJECT NO: 2016.0305  
DATE: MAY 31, 2017

P1.0  
PLUMBING SANITARY PLAN

CHECKED: PD DRAWN: MM

INTERNET/ALL RIGHTS RESERVED. THESE DOCUMENTS ARE THE PROPERTY OF INTERPLAN AND ARE NOT TO BE REPRODUCED, COPIED, OR TRANSMITTED IN ANY FORM OR BY ANY MEANS, ELECTRONIC OR MECHANICAL, WITHOUT THE WRITTEN PERMISSION OF INTERPLAN. ANY UNAUTHORIZED USE OF THESE DOCUMENTS IS STRICTLY PROHIBITED.