

SEAL:

HVAC NOTES

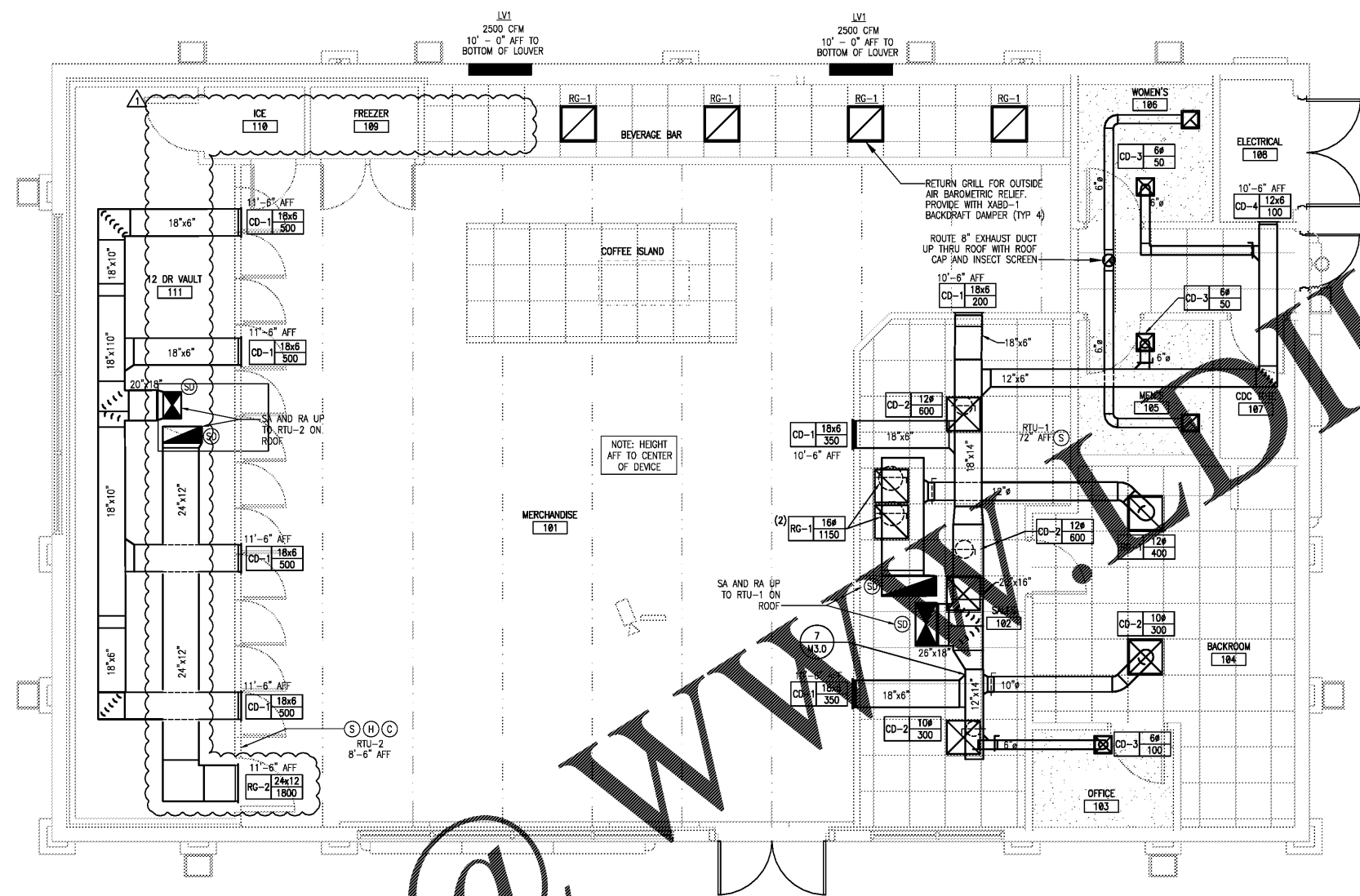
- NOTES APPLY TO ALL MECHANICAL SHEETS.
- EACH CONTRACTOR IS RESPONSIBLE FOR HAVING THOROUGH KNOWLEDGE OF ALL DRAWINGS AND SPECIFICATIONS AS THEY RELATE TO THIS WORK. NO ADDITIONAL COMPENSATION SHALL BE ALLOWED DUE TO LACK OF THIS KNOWLEDGE.
- PROVIDE ALL MATERIALS FOR A COMPLETE INSTALLATION IN ALL RESPECTS READY FOR INTENDED USE AND IN STRICT ACCORDANCE WITH STATE AND LOCAL CODES AND MANUFACTURER'S RECOMMENDATIONS.
- SPRINKLER HEAD AND LIGHTING FIXTURE LOCATIONS TAKE PRECEDENCE OVER DIFFUSER LOCATIONS. COORDINATE WITH ELECTRICAL CONTRACTOR AND FIRE PROTECTION CONTRACTOR.
- DUCTWORK IDENTIFICATION AND INSTALLATION IS SUBJECT TO GOVERNING CODES.
- DUCT SIZES INDICATED ARE INSIDE CLEAR DIMENSIONS AND REPRESENTATIVE OF THE INSIDE EQUIVALENT FREE AREA REQUIRED TO MAINTAIN THE AIR EQUIVALENT FREE AREA. IF DUCT LININGS ARE REQUIRED, INCREASE SIZE TO MAINTAIN ORIGINAL INSIDE DIMENSIONS. IF DUCT SIZES NEED TO BE ADJUSTED FOR SPACE REQUIREMENTS, ENSURE THE ORIGINAL INSIDE DUCT EQUIVALENT FREE AREA IS MAINTAINED.
TYPICAL BRANCH DUCT FITTING DETAIL IS APPLICABLE THROUGHOUT. CONCEALABLE DUCTWORK IS ONLY PERMITTED FOR FINAL CONNECTION - MAX LENGTH OF 6'-0".
- BRUSH AND INSTALL VOLUME/BALANCE DAMPERS AT ALL BRANCH DUCTS TO DIFFUSERS. LOCATE DAMPERS AT A MINIMUM 4'-0" AWAY FROM DIFFUSERS. PROVIDE ACCESS AS REQUIRED.
- ALL CEILING DIFFUSERS ARE 4-WAY PATTERN UNLESS SHOWN OTHERWISE.
- PROVIDE A COMPLETE TEST AND BALANCE FOR HVAC SYSTEM. AIR BALANCE SHALL BE WITHIN 5% OF SCHEDULED AIRFLOWS. PROVIDE A COPY OF REPORT TO OWNER AND ENGINEER.
- INSTALL VTR'S AND EXHAUST FANS A MINIMUM OF 10 FT FROM OUTSIDE AIR INTAKE.
- 20x42 VR-1 RELIEF AIR DUCT WITH BAROMETRIC RELIEF DAMPER - EXTENDED DUCTWORK 36" INTO CEILING SPACE WITH 1/2" X 1/2" WIRE MESH GRILLE OVER DUCT OPENING.

REF EMS1.0 SHEET FOR ADDITIONAL INFORMATION REGARDING THE BUILDING ENERGY MANAGEMENT SYSTEM CONTROLS. CONTACT AUTOMATED LOGIC (ALC) AT (888) 390-4275 UPON AWARD OF CONTRACT TO OBTAIN LIST OF CERTIFIED EMS INSTALLERS. DURING CONSTRUCTION, AT 2 WEEKS PRIOR TO BUILDING TURNOVER, CONTACT ALC TO COORDINATE DELIVERY OF EMS PANEL. AFTER INSTALLATION OF EMS PANEL INCLUDING CONNECTION OF CABLES, CONTACT ALC FOR START-UP OF EMS PANEL. START-UP TO BE DONE 2-3 DAYS PRIOR TO BUILDING TURNOVER.

COMMISSIONING AND T&B REQUIRED AND A REPORT GENERATED USING 7-ELEVEN'S COMMISSIONING REPORT TEMPLATE. PROVIDE A COPY TO THE OWNER AND ENGINEER. IF HVAC SYSTEM AIRFLOW CANNOT BE BALANCED PER PLANS, CONTACT ENGINEER OF RECORD FOR RESOLUTION.

BEACON II AND EVAPORATORS TO BE CONFIGURED FOR THE INCOMING VOLTAGE.

ROUTE INSIDE REFRIGERANT LINES TIGHT TO EXTERIOR WALL. REF 11/M3.0 FOR SUPPORT DETAIL.



① MECHANICAL FLOOR PLAN 1/4" = 1'-0"

Order Plans @

NO.	DATE	REVISIONS	REMARKS
1	06.21.17	PEER REVIEW COMMENTS	



BID SET
JANUARY 8, 2018

7-ELEVEN
STORE #32810

5544 RONALD REAGAN PARKWAY
DAVENPORT, FL
33896

PROJECT NO: 2016.0305
DATE: MAY 31, 2017

M1.0
MECHANICAL FLOOR PLAN

CHECKED: AS DRAWN: MM

COPYRIGHT © 2016 INTERPLAN, LLC. REVISIONS, CHANGES OR ASSIGNMENTS ARE PROHIBITED.