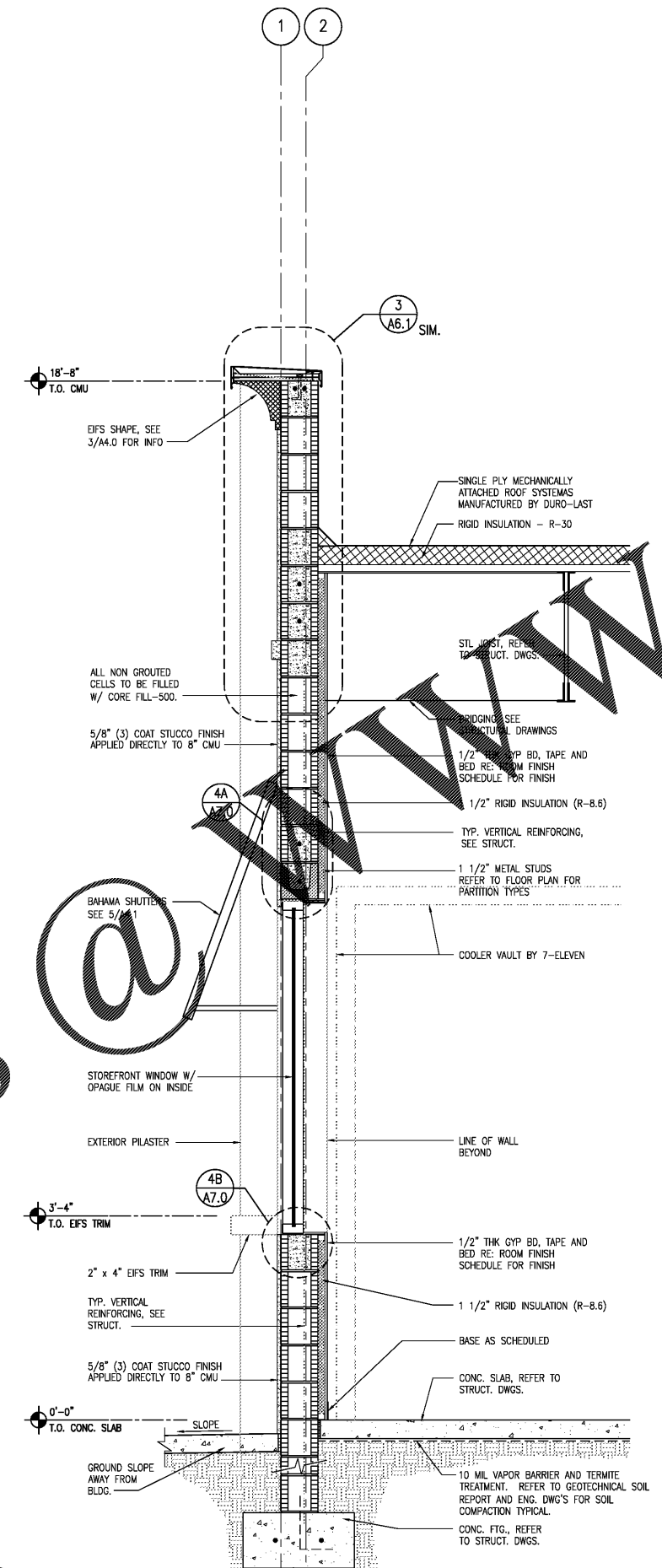
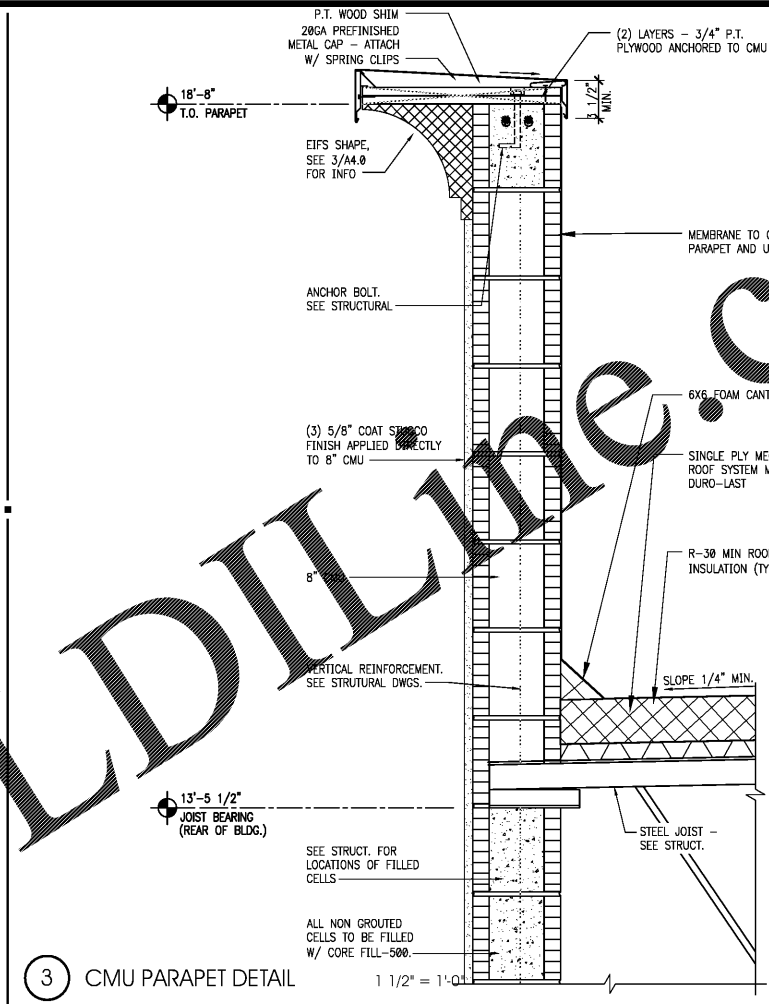


1 WALL SECTION 3/4" = 1'-0"



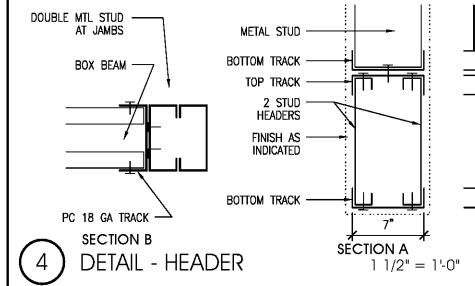
2 WALL SECTION 3/4" = 1'-0"



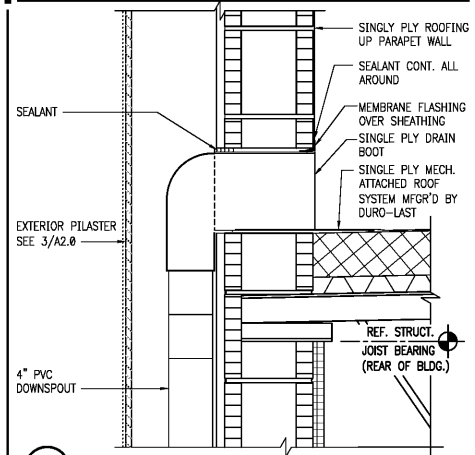
3 CMU PARAPET DETAIL 1 1/2" = 1'-0"

INTERIOR NON-LOAD BEARING PARTITION HEADER SCHEDULE

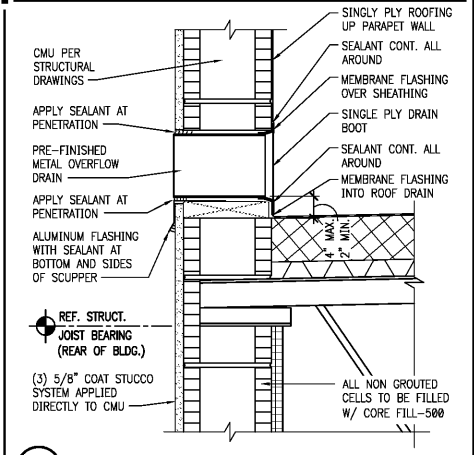
HEADER LENGTH	HEADER MEMBERS	MINIMUM EFFECTIVE PROPERTIES PER STUD
2' TO 6'	(2) 6" x 18 GAUGE	kx = 2.042 Sx = 0.670
6' TO 8'	(2) 6" x 16 GAUGE	kx = 2.518 Sx = 0.839
8' TO 10'	(2) 6" x 14 GAUGE	kx = 3.094 Sx = 1.031
10' TO 12'	(2) 8" x 18 GAUGE	kx = 4.134 Sx = 1.033
12' TO 14'	(2) 8" x 16 GAUGE	kx = 5.110 Sx = 1.277
14' TO 16'	(2) 8" x 14 GAUGE	kx = 6.303 Sx = 1.576
16' TO 18'	(2) 10" x 14 GAUGE	kx = 12.325 Sx = 2.456
18' TO 26'	(2) 12" x 16 GAUGE	kx = 15.730 Sx = 2.334



4 SECTION B DETAIL - HEADER 1 1/2" = 1'-0"



5 SCUPPER DETAIL 1 1/2" = 1'-0"



6 OVERFLOW DETAIL 1 1/2" = 1'-0"

SEAL:

NO. DATE REMARKS
 REVISIONS



BID SET
 JANUARY 8, 2018

**7-ELEVEN
 STORE #32810**

5544 RONALD REAGAN PARKWAY
 DAVENPORT, FL
 33896

PROJECT NO: 2016.0305
 DATE: MAY 31, 2017

A6.1

WALL SECTIONS AND
 DETAILS

CHECKED: RW DRAWN: JUM

Order Plans

www.LDILLINE.com

INTERNET: RESERVE COPYRIGHTS & OTHER RIGHTS RESTRICTING THESE DOCUMENTS TO THE ORIGINAL SET OR PORTION FOR WHICH THEY WERE PREPARED. REPRODUCTIONS, CHANGES OR ASSIGNMENTS ARE PROHIBITED. COPYRIGHT © 2016