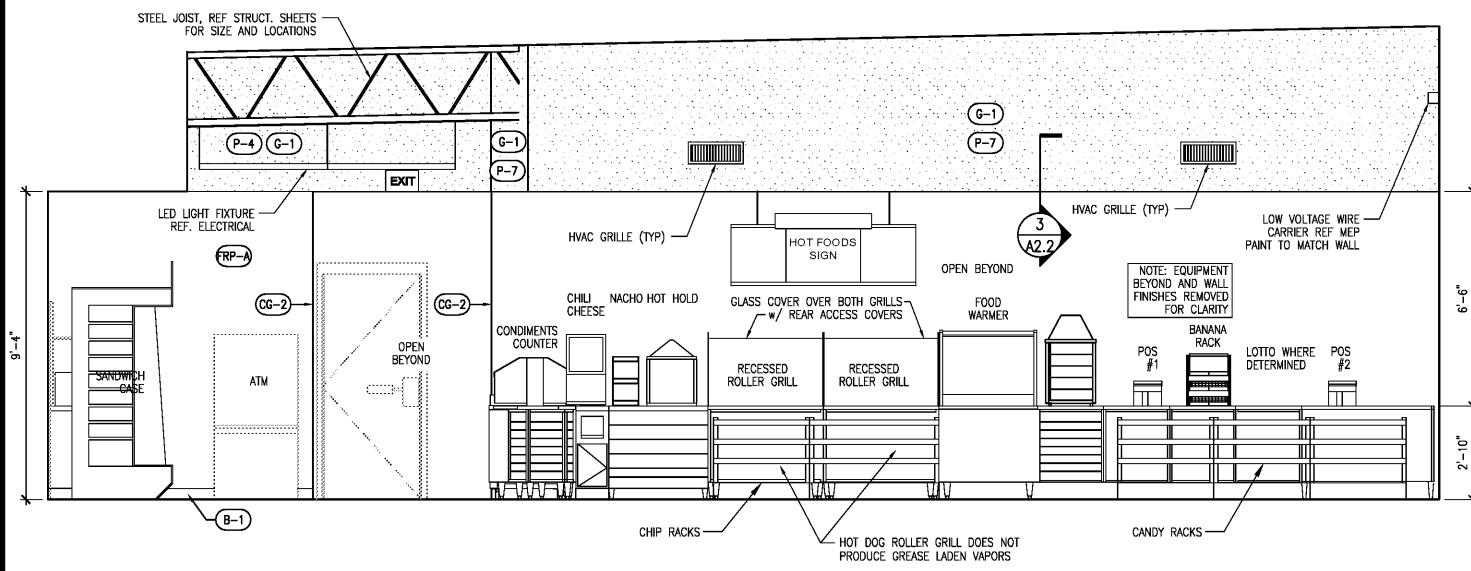
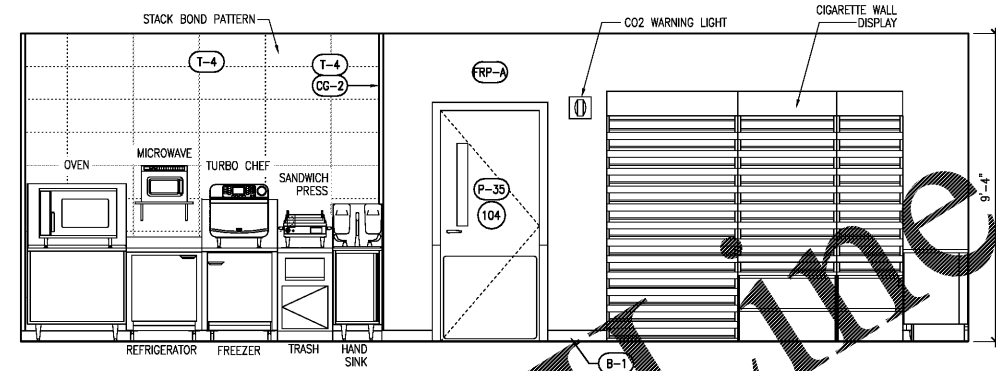


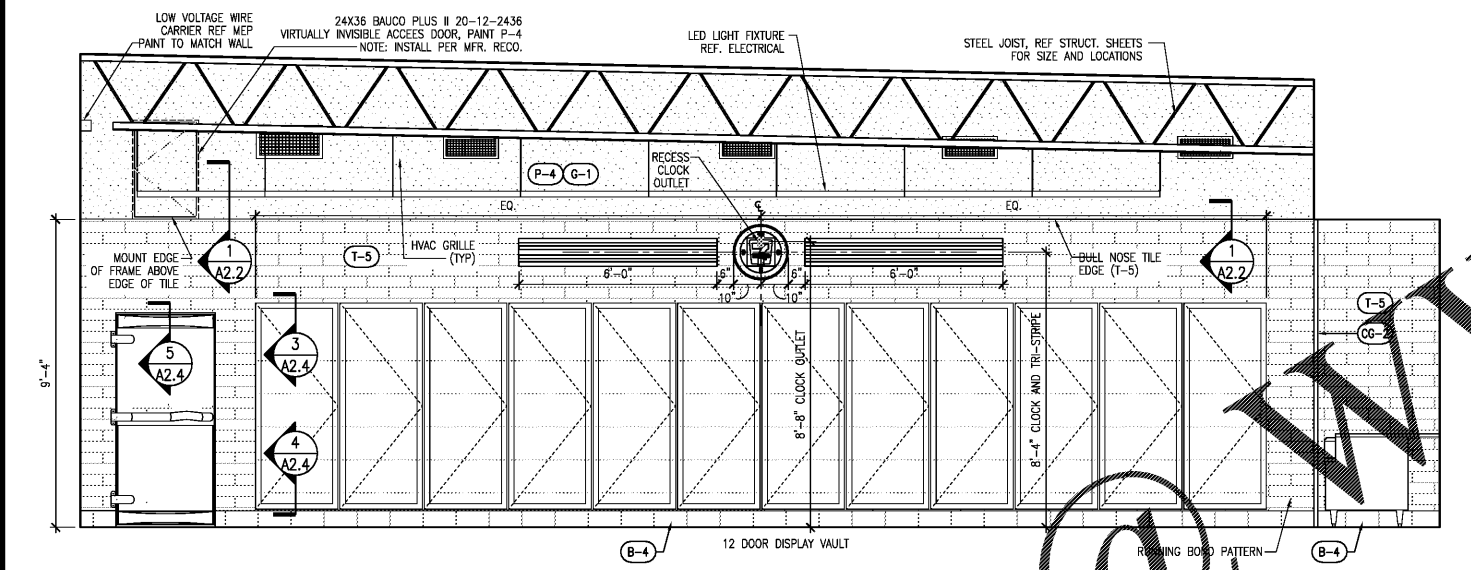
SEAL:



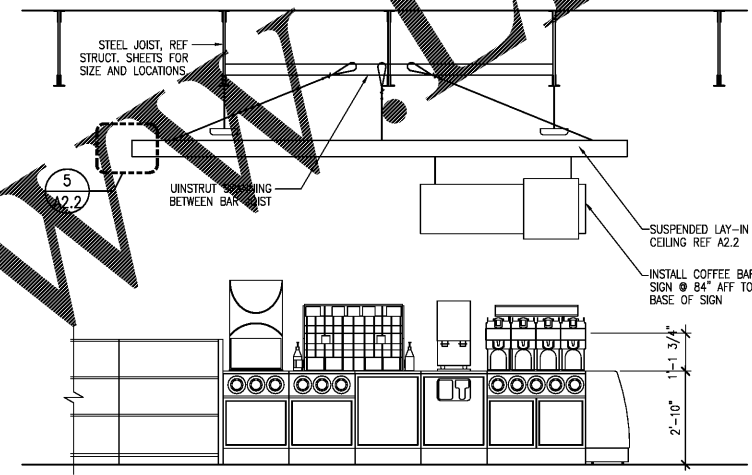
1 INTERIOR ELEVATIONS 3/8" = 1'-0"



2 INTERIOR ELEVATIONS 3/8" = 1'-0"



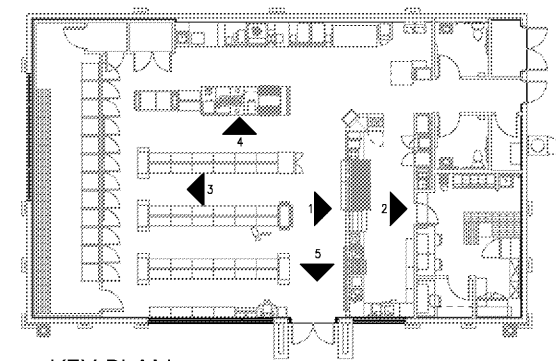
3 INTERIOR ELEVATIONS 3/8" = 1'-0"



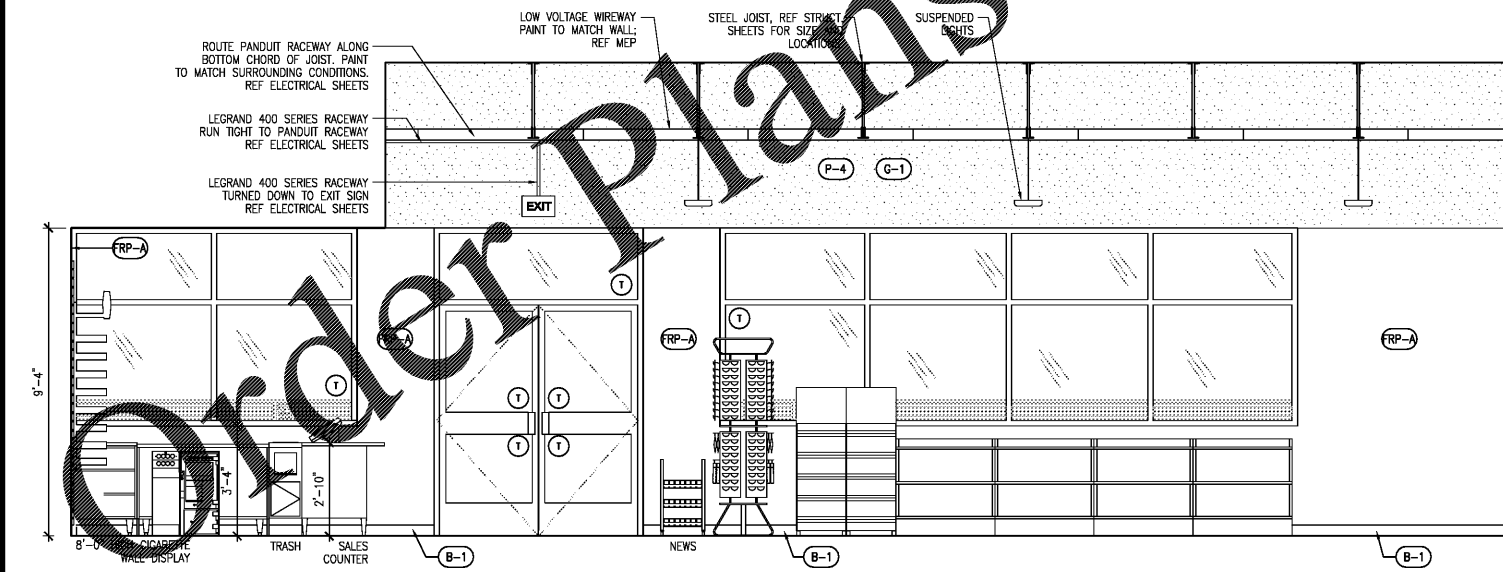
4 INTERIOR ELEVATIONS 3/8" = 1'-0"

GENERAL NOTES

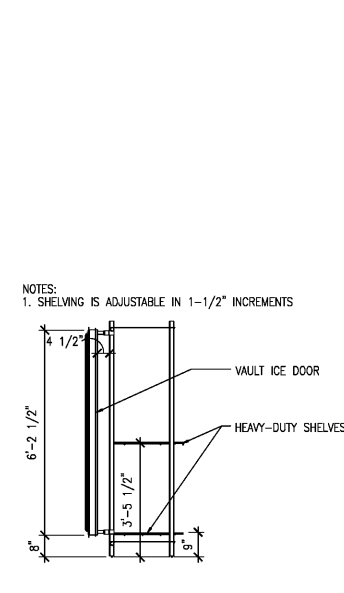
- A. REFERENCE SHEET A3.0 FOR ALL FINISH SCHEDULE.
- B. REFERENCE ELECTRICAL SHEETS FOR RECEPTACLES LOCATIONS AND HEIGHTS.
- C. ALL COUNTER SHALL BE 34" AFF UNLESS OTHERWISE NOTED.



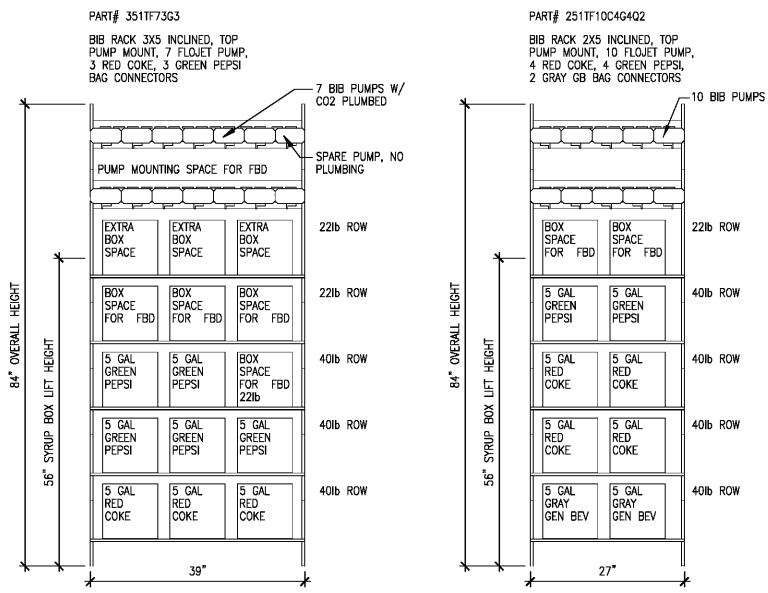
KEY PLAN NTS



5 INTERIOR ELEVATIONS 3/8" = 1'-0"



6 MOUNTING HEIGHTS FOR ICE MERCHANDISING SHELVES 1/2" = 1'-0"



7 PLANOGRAM 3/4" = 1'-0"

1 05/21/17 PEER REVIEW COMMENTS
NO. DATE REMARKS



BID SET
JANUARY 8, 2018

7-ELEVEN
STORE #32810

5544 RONALD REAGAN PARKWAY
DAVENPORT, FL
33896

PROJECT NO: 2016.0305
DATE: MAY 31, 2017

A5.1
INTERIOR ELEVATIONS

CHECKED: RW DRAWN: JUM

Order Plans

WWW.DIline.com

COPYRIGHT © 2016 INTERPLANS, ALL RIGHTS RESERVED. NO PART OF THESE DOCUMENTS TO BE REPRODUCED OR TRANSMITTED IN ANY FORM OR BY ANY MEANS, ELECTRONIC OR MECHANICAL, WITHOUT PERMISSION IN WRITING FROM INTERPLANS. REPRODUCTIONS, CHANGES OR ASSIGNMENTS ARE PROHIBITED.