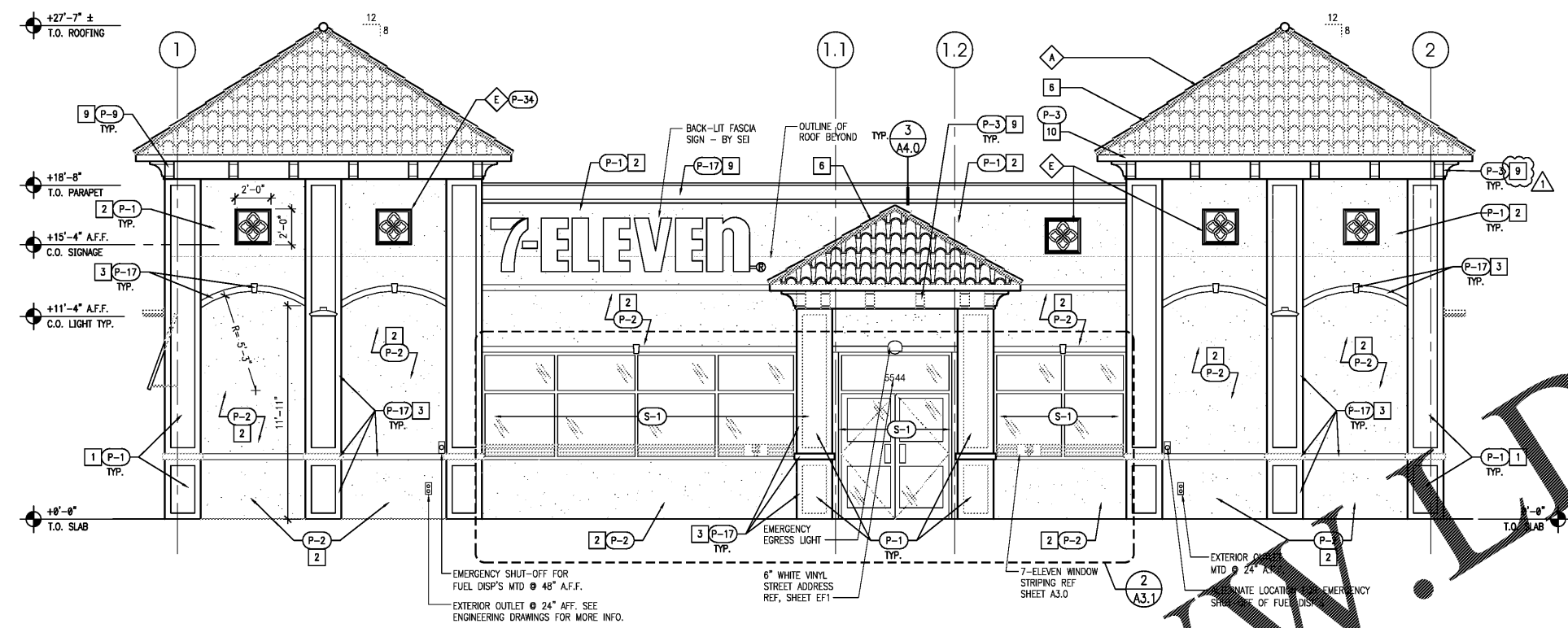


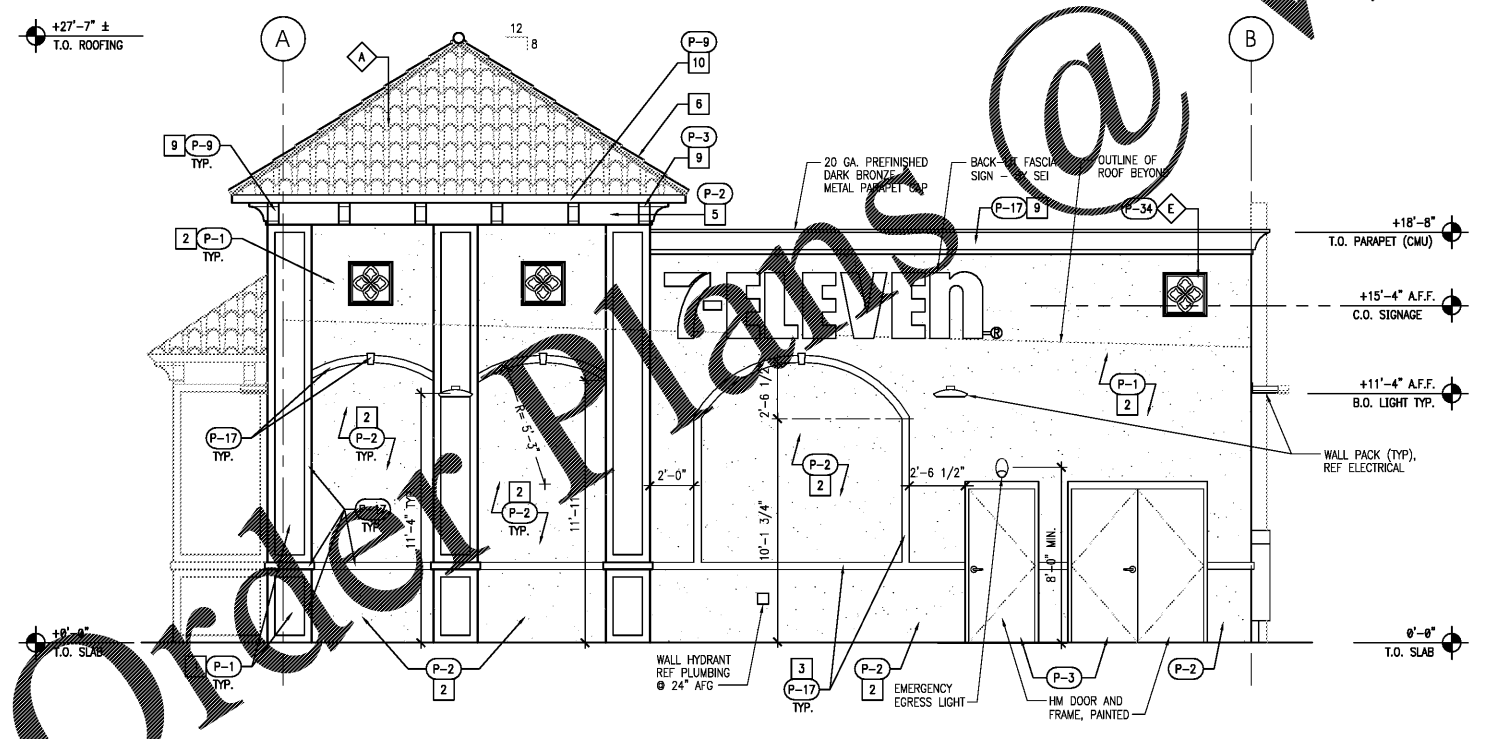
GENERAL NOTES

- A. COORDINATE EXTERIOR SIGNAGE WITH CONSTRUCTION PROJECT MANAGER.
- B. REFER TO MATERIAL SCHEDULE ON A3.0 FOR MORE INFORMATION.
- C. EXTERIOR AWNINGS UNDER SEPARATE PERMIT.



1 FRONT ELEVATION
 1/4" = 1'-0"

EXTERIOR MATERIALS SCHEDULE		
NO.	MATERIAL	MANUF.-COLOR
MR-1	MEMBRANE ROOFING	DUROLAST - WHITE
P-1	ABOVE WATER TABLE (ABOVE 3'-4")	SHERWIN WILLIAMS - DIVERSE BEIGE SW6079
P-2	WATER TABLE AND BELOW (3'-4" AND BELOW)	SHERWIN WILLIAMS - DRY DOCK SW 7502
P-3	EXTERIOR HM DOORS, FRAMES, TRASH ENCLOSURE, GATE, GRAVEL GUARDS, AND LIGHT POLES	SHERWIN WILLIAMS - SEAL SKIN SW7675
P-6	EXTERIOR BOLLARDS	SHERWIN WILLIAMS - SEAL SKIN SW7675
P-9	PIPING, ROOF CAPS	SHERWIN WILLIAMS - SEAL SKIN SW7675
P-17	STUCCO BANDS/ACCENTS	SHERWIN WILLIAMS - CASA BLANCA SW7571
P-34	BAHAMA SHUTTERS, BAROMETRIC DAMPERS,	ICI BICENTENNIAL 300G 22/079
S-1	ALUMINUM STOREFRONT GLAZING	KAWNEER - 451 T VG DARK BRONZE



2 RIGHT SIDE ELEVATION
 1/4" = 1'-0"

KEY NOTES

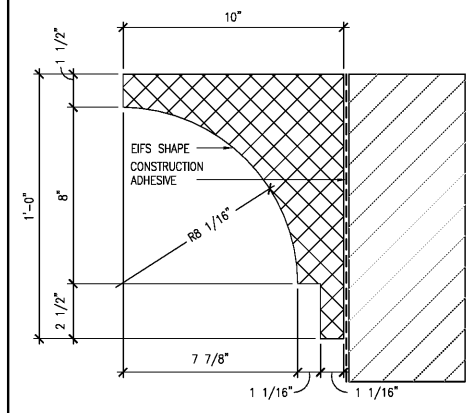
- 1. SMOOTH STUCCO
- 2. TEXTURED STUCCO
- 3. RAISED SMOOTH STUCCO BAND
- 4. TEXTURE STUCCO
- 5. RAISED SMOOTH STUCCO
- 6. STONE COATED METAL BARREL VAULT ROOFING - COLOR "BARCELONA"
- 7. SMOOTH STUCCO ACCENT
- 8. RAISED SMOOTH STUCCO
- 9. CUSTOM FOAM BRACKET
- 10. METAL

FINISH NOTES

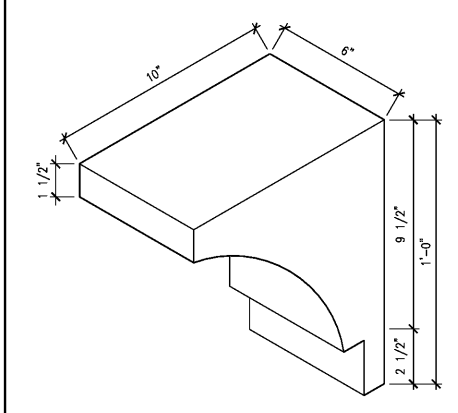
- P-1 DIVERSE BEIGE SW6079
- P-2 DRY DOCK SW7502
- P-3 SEAL SKIN SW7675
- P-17 CASA BLANCA SW7571
- P-34 ICI BICENTENNIAL 300G 22/079

ARCHITECTURAL ELEMENTS

- A. TOWER w/ METAL BARREL TILE ROOF
- B. SQUARE COLUMNS
- C. SCORE LINES
- D. PORTICO/PORTE COCHERE
- E. FRIEZE/MEDALLION SCALE-DIAPER MANUFACTURED BY PINEAPPLE GROVE
- F. CORNICE
- G. BAHAMA SHUTTERS



3 CORNICE DETAIL
 3" = 1'-0"



4 DENTIL DETAIL
 3" = 1'-0"

1 05/21/17 PEER REVIEW COMMENTS
 NO. DATE REMARKS
 REVISIONS



BID SET
 JANUARY 8, 2018

7-ELEVEN
STORE #32810

5544 RONALD REAGAN PARKWAY
 DAVENPORT, FL
 33896

PROJECT NO: 2016.0305
 DATE: MAY 31, 2017

A4.0
 EXTERIOR ELEVATIONS

CHECKED: RW DRAWN: JUM

Order Plans @ WWW.IDLine.com

INTERPLANS ARCHITECTURE ENGINEERING INTERIOR DESIGN PROJECT MANAGEMENT
 604 COURTLAND STREET SUITE 100 ORLANDO, FLORIDA 32804 PH 407.645.5008 FX 407.629.9124
 COPYRIGHT © 2016