

- GENERAL NOTES**
- ALL INTERIOR FINISHES TO BE CLASS 2 OR BETTER.
  - CONTRACTOR TO FLOAT AND SCRAPE FLOOR TO BE LEVEL AND PREPARE FOR NEW SCHEDULED FINISH.
  - CONTRACTOR TO RESERVE SPECIFIED FLOORING AND BASE UPON BEING AWARDED THE BID TO ENSURE AVAILABILITY AND TIMELY INSTALLATION. SUBSTITUTIONS ARE NOT PERMITTED.
  - FLOORS IN WET AREAS TO SLOPE TO DRAINS 1/8" PER FOOT, TYP.
  - PROVIDE A BEAD OF CAULK AT INTERIOR CONDITIONS PER OWNER DESIGN AND PROJECT NEEDS. CAULK IS TO MATCH COLOR OF ADJACENT MATERIALS.
  - REFERENCE INTERIOR ELEVATIONS FOR WALL FINISHES.
  - REFERENCE SHEET A5.4 FOR BASE TYPES & DETAILS.
  - FIRE EXTINGUISHER: #10 CLASS ABC WITH III RATING 4A-60BC. SLIP RESISTANT MOUNTED ON WALL WITH MANUFACTURER'S STEEL WALL BRACKET. INDUSTRIES INC. (COSMIC 10E) OR APPROVED EQUAL. INSPECTOR TAG AS REQUIRED BY LOCAL CODES.
  - ALL WALL FINISHES IN THE MERCHANDISE / SALES AREAS SHALL BE FRP WALL PANEL "FRP-A" UNLESS NOTED OTHERWISE IN THE FLOOR PLAN. (REFERENCE SHEET A6.0 FOR MATERIAL SCHEDULE).
  - CONTRACTOR TO INSTALL 7-ELEVEN PROVIDED COAT HOOKS FOR EMPLOYEES. REFERENCE SHEET EF10EM 220. WALL 2 IN OFFICE AND 3 IN BACKROOM. LOCATION TO BE DETERMINED BY CONSTRUCTION PROJECT MANAGER. SEE HARBORCRAFT SCHEDULES.
  - APPLY 3M SUNGLASS WINDOW FILMS @ ALL SOUTH, EAST, AND WEST FACED GLASS (3M-1). NOTE NO FILM SHOULD BE APPLIED TO THE STOREFRONT DOORS. (REFERENCE SHEET A6.0 FOR MATERIALS SCHEDULE).
  - G.C. TO FURNISH AND INSTALL RIS BACKBOARD AT ISP DESK. REFERENCE MATERIALS SCHEDULE ON SHEET A6.1.

- KEY NOTES**
- 8" (33%) OFFSET RUNNING BOND PORCELAIN TILE FLOOR PER MATERIAL SCHEDULE ON A3.0. 24" EDGE OF TILE TO RUN PARALLEL WITH ENTRY STOREFRONT. BEGIN FULL SIZE TILE AT EDGE OF ENTRY THRESHOLD.
  - TILE TO BE INSTALLED UP TO EDGE OF MOP SINK.
  - METAL THRESHOLD TO BE SET IN FULL BED OF MASTIC - SEE 15/A7.0
  - FLOOR SINK/DRAIN PER PLAN, REF. DETAILS ON THIS SHEET & PLUMBING DRAWINGS FOR LOCATION.
  - CONTRACTOR TO CUT TILE STRAIGHT AND TRUE, NOT LESS THAN 1/2 A TILE.

**FLOOR FINISH LEGEND**

	CERAMIC TILE (T-1) RE: A3.0 FOR FINISH SCHEDULE
	SEALED CONCRETE (SC-1) RE: A3.0 FOR FINISH SCHEDULE
	VINYL TILE (VCT-1) RE: A3.0 FOR FINISH SCHEDULE
	FLOOR SINK
	FLOOR DRAIN
	FLOOR CLEAN-OUT

REVISIONS

2	07/07/17	PEER REVIEW COMMENTS
1	05/21/17	PEER REVIEW COMMENTS
NO.	DATE	REMARKS

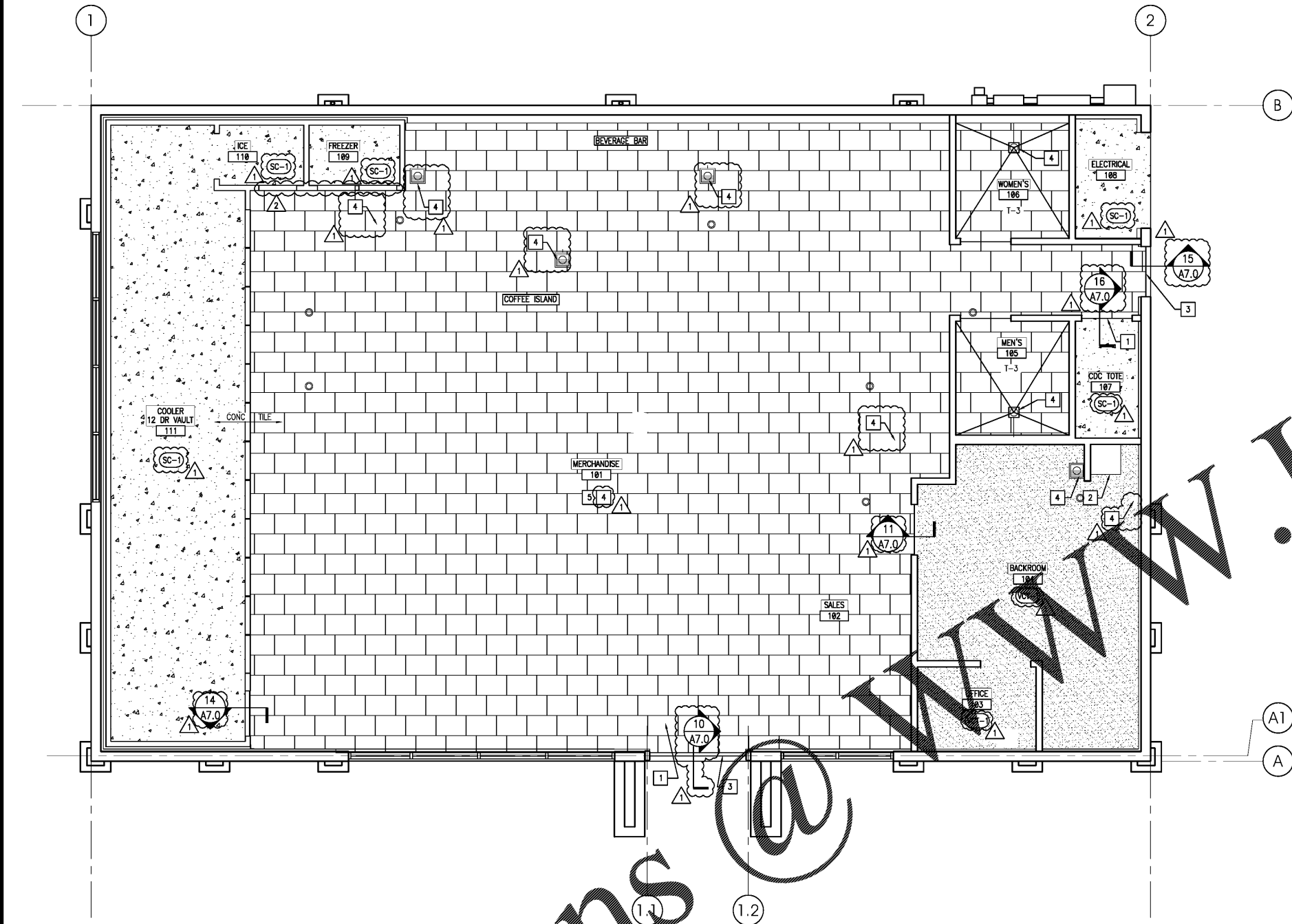


BID SET  
 JANUARY 8, 2018  
**7-ELEVEN**  
**STORE #32810**  
 5544 RONALD REAGAN PARKWAY  
 DAVENPORT, FL  
 33896

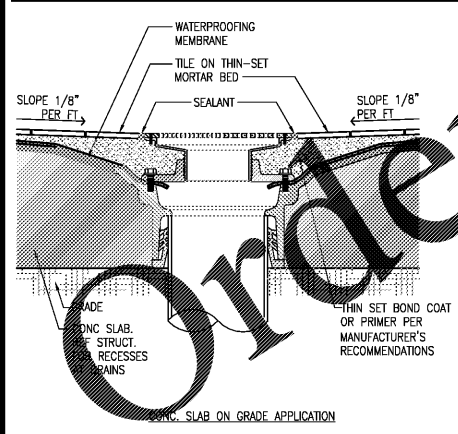
PROJECT NO: 2016.0305  
 DATE: MAY 31, 2017

**A2.4**  
 FINISH FLOOR PLAN

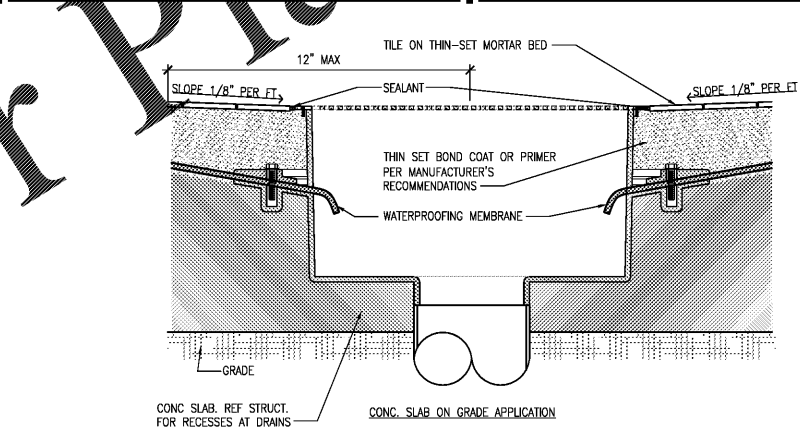
CHECKED: RW DRAWN: JUM



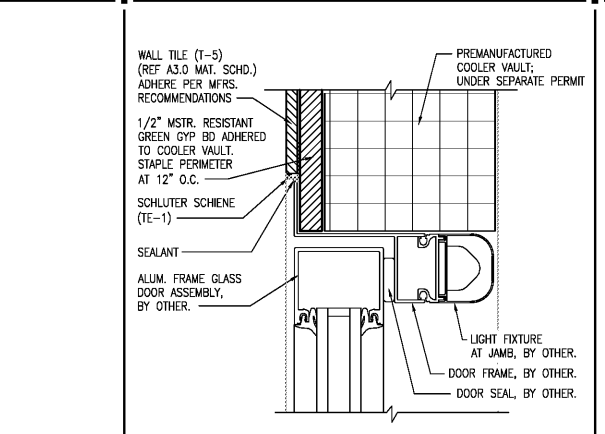
**FINISH FLOOR PLAN**



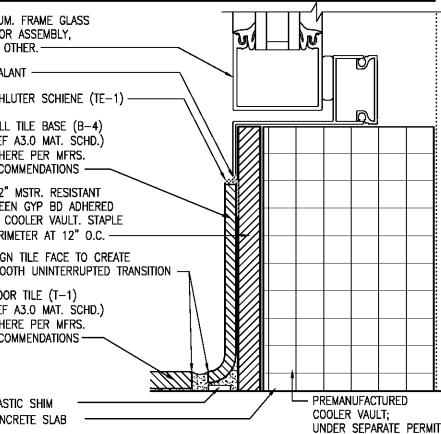
1 FLOOR DRAIN DETAIL 3" = 1'-0"



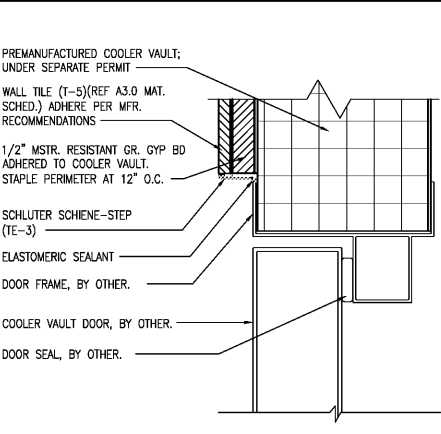
2 FLOOR SINK DETAIL (FLUSH) 3" = 1'-0"



3 TILE/COOLER MERCHANDISE DOOR TRANSITION HEAD/JAMB DETL. NTS



4 TILE/COOLER MERCHANDISE DOOR TRANSITION BASE DETL. NTS



5 TILE/COOLER MAN DOOR TRANSITION HEAD/JAMB DETL. NTS