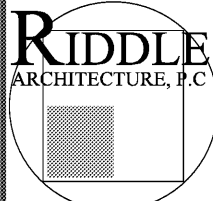


REVISIONS	
NO.	DATE

A
NEW TOWN
HALL FOR:

THE TOWN OF
NORTH
HIGH
SHOALS

260 HILLSBORO
ROAD



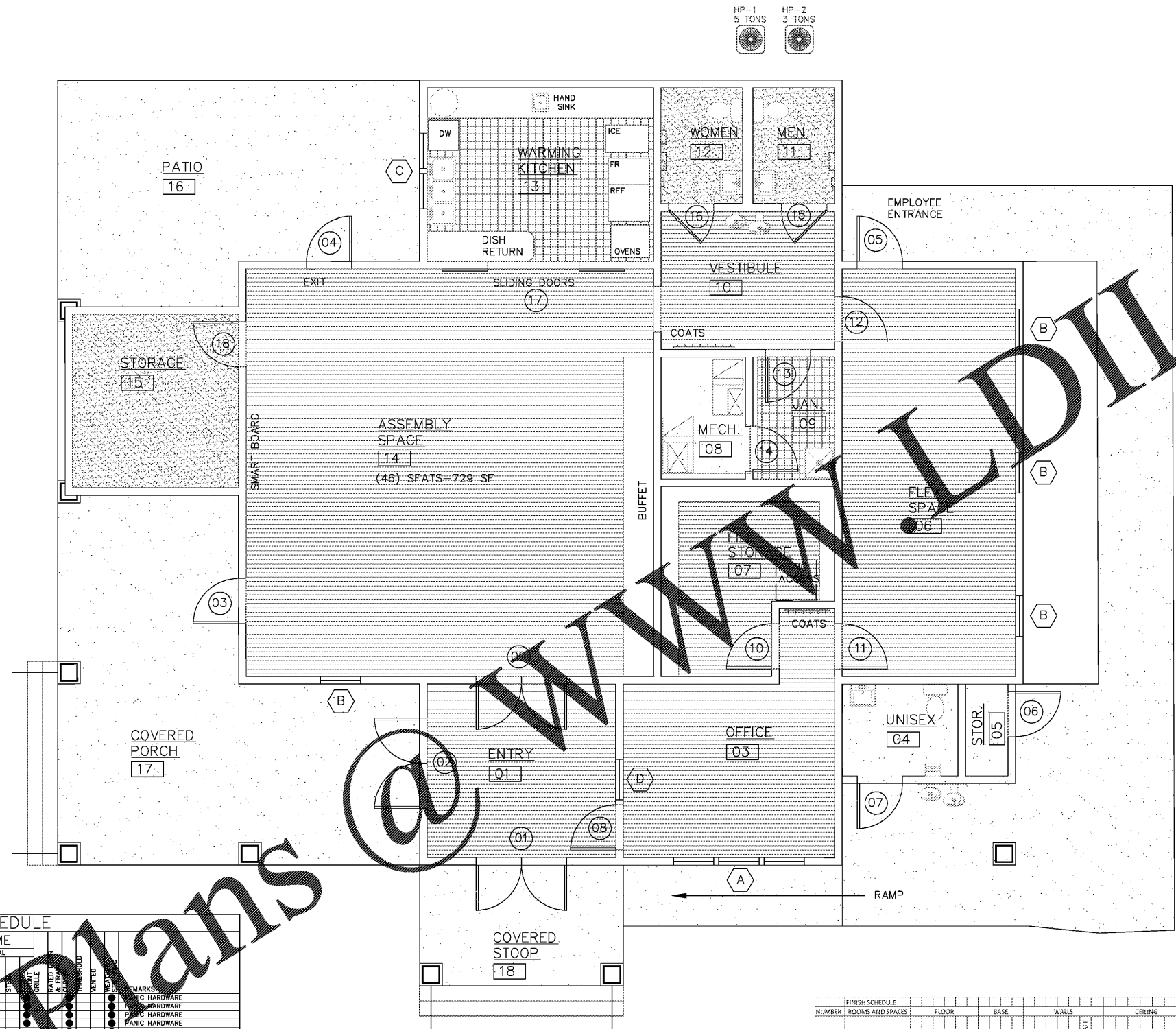
AMERICAN
INSTITUTE
OF
ARCHITECTS

1481 HODGES MILL ROAD
WATKINSVILLE, GA
30677
(404) 285-8646

TITLE: FINISHES
PLAN

JOB #: 1510
DATE: 11.17.17

SHEET #
A3.2



1 FINISHES PLAN
A3.2 SCALE: 1/4" = 1'-0"



DOORS AND WINDOWS TEMPERED WHERE APPLICABLE PER IBC CHAPTER 2604.

NO.	DOOR			MATERIAL	FRAME	REMARKS
	W	H	T			
01	5'-0"	7'-0"	0'-1 3/4"	ALUM/CL	ALUM	GLASS HARDWARE
02	5'-0"	7'-0"	0'-1 3/4"	ALUM/CL	ALUM	GLASS HARDWARE
03	5'-0"	7'-0"	0'-1 3/4"	ALUM/CL	ALUM	GLASS HARDWARE
04	5'-0"	7'-0"	0'-1 3/4"	ALUM/CL	ALUM	GLASS HARDWARE
05	5'-0"	7'-0"	0'-1 3/4"	ALUM/CL	ALUM	GLASS HARDWARE
06	5'-0"	7'-0"	0'-1 3/4"	ALUM/CL	ALUM	GLASS HARDWARE
07	5'-0"	7'-0"	0'-1 3/4"	ALUM/CL	ALUM	GLASS HARDWARE
08	5'-0"	7'-0"	0'-1 3/4"	ALUM/CL	ALUM	GLASS HARDWARE
09	5'-0"	7'-0"	0'-1 3/4"	ALUM/CL	ALUM	GLASS HARDWARE
10	5'-0"	7'-0"	0'-1 3/4"	ALUM/CL	ALUM	GLASS HARDWARE
11	5'-0"	7'-0"	0'-1 3/4"	ALUM/CL	ALUM	GLASS HARDWARE
12	5'-0"	7'-0"	0'-1 3/4"	ALUM/CL	ALUM	GLASS HARDWARE
13	5'-0"	7'-0"	0'-1 3/4"	ALUM/CL	ALUM	GLASS HARDWARE
14	5'-0"	7'-0"	0'-1 3/4"	ALUM/CL	ALUM	GLASS HARDWARE
15	5'-0"	7'-0"	0'-1 3/4"	ALUM/CL	ALUM	GLASS HARDWARE
16	5'-0"	7'-0"	0'-1 3/4"	ALUM/CL	ALUM	GLASS HARDWARE
17	5'-0"	7'-0"	0'-1 3/4"	ALUM/CL	ALUM	GLASS HARDWARE
18	5'-0"	7'-0"	0'-1 3/4"	ALUM/CL	ALUM	GLASS HARDWARE

DOORS AND WINDOWS TEMPERED WHERE APPLICABLE PER IBC CHAPTER 2604.

NO.	WINDOW		FRAME MATERIAL	GLAZING	REMARKS
	W	H			
A 3	2'-8"	5'-2"	VNVL	INSULATED	TEMPERED WHERE REQUIRED
B 1	2'-8"	5'-2"	VNVL	INSULATED	TEMPERED WHERE REQUIRED
C 2	2'-8"	3'-2"	VNVL	INSULATED	TEMPERED WHERE REQUIRED
D 1	2'-8"	7'-0"	STORE FRONT	SINGLE PANE	TEMPERED

ALL DOOR AND WINDOW CASINGS 1X4 HARDIE PLANK (SEE ELEVATIONS)

HARDWARE: ALL HARDWARE ADA COMPLIANT. FINISH TO BE BRUSHED CHROME.
COORDINATE SELECTIONS WITH TOWN COUNCIL, INSTALLED ALLOWANCE TO BE \$10,500.

FINISH SCHEDULE	FLOOR	BASE	WALLS	CEILING	REMARKS
01-ENTRY					
02-RECEP.					
03-OFFICE					
04-UNISEX					
05-FILE STOR.					
06-FILE SPACE					
07-FILE STORAGE					
08-MECH.					
09-JAN.					
10-VESTIBULE					
11-MEN					
12-WOMEN					
13-WARMING KITCHEN					
14-ASSEMBLY SPACE					
15-STORAGE					
16-PATIO					
17-COVERED PORCH					
18-COVERED STOOP					

FINISH NOTES:
1. DIFFERENT WINDOWS / DOORS TO BE SHIPPED BY WOOD CASING FROM
2. TRANSITION STAIRS TO BE BLACK VINYL ONLY.