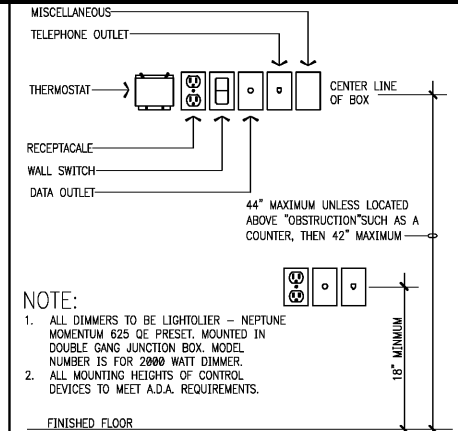


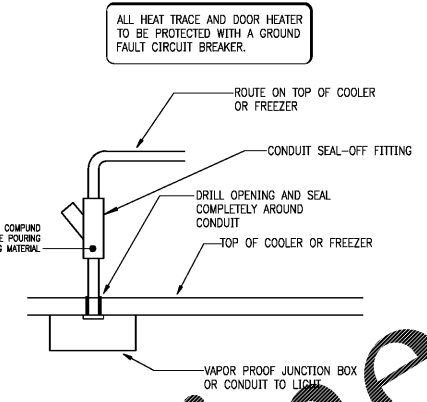
1 WALK-IN COOLER DETAIL

- 1. OBTAIN AND PAY FOR ALL PERMITS, CERTIFICATES, ETC., AS REQUIRED.
- 2. DELIVER CERTIFICATE OF FINAL INSPECTION TO DEVELOPER/OWNER BEFORE APPLYING FOR FINAL PAYMENT.
- 3. CONSULT WITH OTHER CONTRACTOR'S FURNISHING EQUIPMENT TO VERIFY LOADS AND SECURE LOCATION OF OUTLETS, JUNCTION BOXES, ETC.
- 4. PROVIDE DISCONNECT SWITCHES, STARTERS, AND ASSOCIATED WIRING AS REQUIRED FOR EXHAUST FANS AND AIR CONDITIONING EQUIPMENT.
- 5. PROVIDE MAIN POWER WIRING AND FINAL CONNECTIONS TO ALL NEW HVAC EQUIPMENT (EXCLUDING THERMOSTAT AND THERMOSTAT WIRING) AND SMOKE DETECTOR.
- 6. MINIMUM WIRE SIZE SHALL BE #12 AWG EXCEPT CONTROL WIRING AS NOTED. ALL WIRE SHALL BE COPPER TYPE THHN OR THWN.
- 7. DO NOT MAKE CHANGES OR SUBSTITUTIONS WITHOUT APPROVAL OF ARCHITECT AND/OR ENGINEER.
- 8. ALL WORK SHALL BE GUARANTEED FOR A PERIOD OF (1) ONE YEAR FROM DATE OF FINAL ACCEPTANCE.
- 9. ALL ELECTRICAL SYSTEMS SHALL BE COMPLETELY AND EFFECTIVELY GROUNDED AS REQUIRED IN ARTICLE 250 OF THE NATIONAL ELECTRICAL CODE.
- 10. (INSTALL SERVICE ENTRANCE PER THE NATIONAL ELECTRICAL CODE AND THE LOCAL UTILITY WHEN REQUIRED).
- 11. VERIFY MECHANICAL EQUIPMENT LOCATIONS PRIOR TO THE ROUTING OF CONDUIT AND FEEDERS.
- 12. VERIFY CEILING CONSTRUCTION AND GENERAL CONSTRUCTION BEFORE INSTALLING LIGHT FIXTURES.
- 13. LOW VOLTAGE CABLE TO RUN LOOSE IN JOIST SPACE SECURED NEATLY TO STRUCTURE. PROVIDE 3/4" CONDUIT STUBS AND JUNCTION BOXES FROM POINT OF USE TO ROOF JOISTS.
- 14. ALL 120 VOLT CIRCUITS OVER 75 FEET IN LENGTH SHALL BE #10 AWG.
- 15. PROVIDE TEMPORARY LIGHTING AND POWER DURING THE DEMOLITION AND CONSTRUCTION PHASES.
- 16. SEE ARCHITECTURAL PLAN(S) FOR ADDITIONAL NOTES.
- 17. ALL ELECTRICAL WORK SHALL BE IN ACCORDANCE WITH THE NATIONAL ELECTRICAL CODE AND ALL ORDINANCES, LAWS, AND CODES AFFECTING WORK IN THE LOCAL JURISDICTION.
- 18. VERIFY MECHANICAL EQUIPMENT OVER CURRENT PROTECTION DEVICE (OCPD) REQUIREMENTS WITH THE EQUIPMENT MANUFACTURER PRIOR TO CONNECTION. PROVIDE OCPD REQUIRED.
- 19. VERIFY ALL LIGHT FIXTURE LOCATION DIMENSIONS WITH ARCHITECTURAL FIXTURES PLANS.
- 20. SEE PANEL SCHEDULES FOR CIRCUIT BREAKER, WIRE, AND CONDUIT REQUIREMENTS.
- 21. NO ALUMINUM WIRING/CABLE ALLOWED IN CONSTRUCTION.
- 22. ALL EXIT, EMERGENCY, AND NIGHT LIGHTS SHALL BE ON A NON-SWITCHED BREAKER OR CONNECTED AHEAD OF THE SWITCH AS PER PLANS.
- 23. N/A (ALL SWITCHGEAR AND PANELS TO HAVE COPPER BUS. EQUIPMENT BY SQUARE 'D', GENERAL ELECTRIC, SIEMENS OR Eaton).
- 24. ALL POWER PANELS MUST BE LABELED WITH ENGRAVED PLASTIC NAME PLATES AND TO HAVE TYPE WRITTEN DIRECTORY AFTER CONSTRUCTION IS COMPLETE.

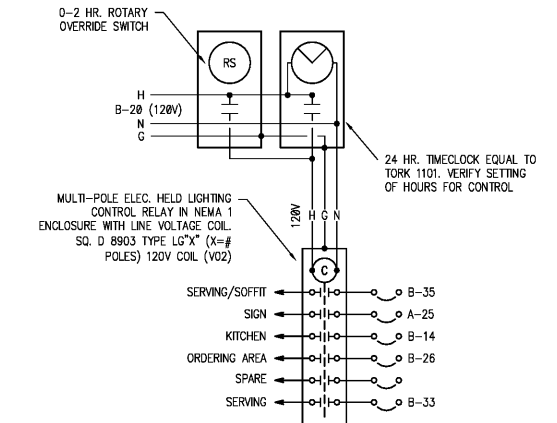
3 GENERAL NOTES



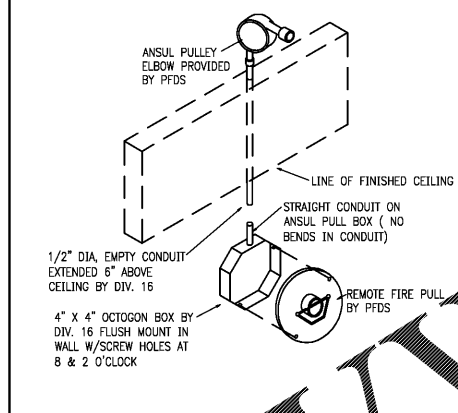
6 A.D.A. DEVICE MOUNTING



8 WALK-IN COOLER CONDUIT



2 LIGHTING CONTROL DIAGRAM

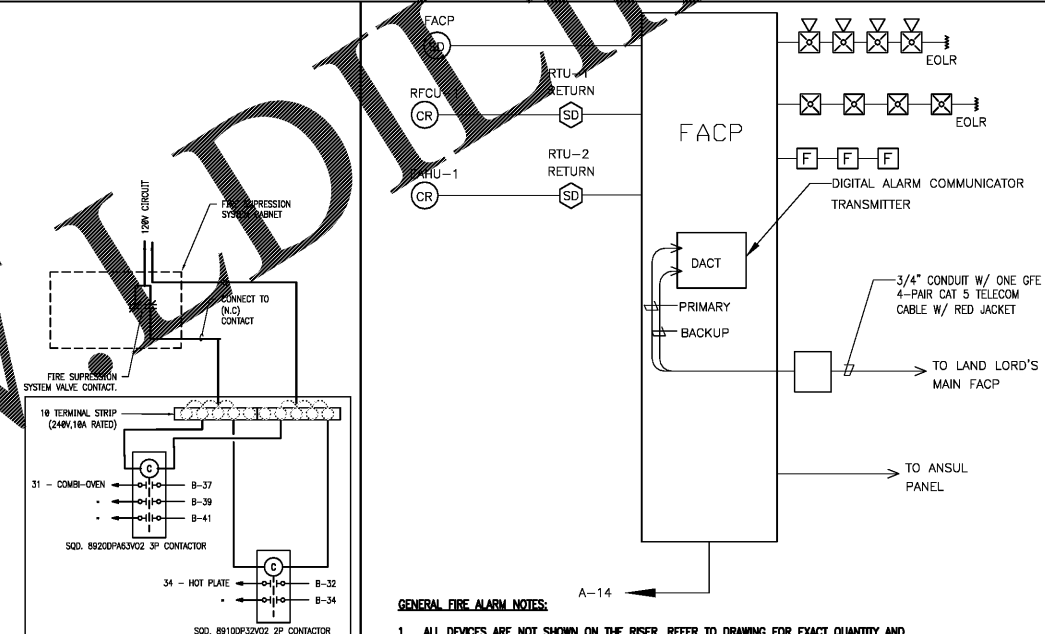


7 REMOTE FIRE PULL STATION

ELECTRICAL SPECIFICATIONS

- PROVIDE COMPLETE ELECTRICAL SYSTEM MEETING ALL REQUIREMENTS OF APPLICABLE CODES AND ORDINANCES, STANDARDS, AND LAWS APPLICABLE TO WORK AT THIS SITE. COORDINATE WITH OTHER TRADES AND MAKE ALL FINAL CONNECTIONS TO ALL EQUIPMENT. MATERIAL SHALL BE AS FOLLOWS:
- CONDUIT: ALL ELECTRICAL CONDUCTORS SHALL BE INSTALLED IN CONDUIT COMPLYING WITH THE NATIONAL ELECTRICAL CODE. WHERE INSTALLED OUTDOORS ABOVE GROUND, IN POURED CONCRETE OR SUBJECT TO STRESS FROM COLLISION OR IMPACT, CONDUIT SHALL BE RIGID UNLESS RIGID STEEL. WHERE RIGID CONDUIT IS NOT REQUIRED, CONDUCTORS SHALL BE INSTALLED IN ELECTRIC METALLIC TUBING WITH ELECTRIC METALLIZED INTERIOR FINISH. WHERE CONDUIT IS INSTALLED UNDERGROUND, CONDUIT SHALL BE PVC AS PERMITTED BY LOCAL AUTHORITIES.
- CONDUCTORS: ALL WIRE IN THE WORK SHALL BE COPPER. EACH CONDUCTOR SHALL BE CONTINUOUSLY SOLDERED, SPICED OR JOINT THROUGHOUT ITS LENGTH (BETWEEN CONNECTION POINTS AND JUNCTION BOXES) AND UNIFORM CROSS-SECTION. WIRE SHALL BE LISTED RATED TYPE "THHN/THWN" INSULATION. MINIMUM WIRE SIZE, EXCEPT FOR CONTROL WIRING, SHALL BE #12 AWG. WITH #10 AWG STRANDED.
- OUTLETS: WALL RECEPTACLES SHALL BE SPECIFICATION GRADE WITH COVERS AS REQUIRED AND COLORS MATCHING SWITCHES, STAINLESS STEEL IN KITCHEN AREA.
- TOGGLE SWITCHES AND SWITCH PLATES: PROVIDE TOGGLE SWITCHES WHERE INDICATED ON THE PLANS, AS FOLLOWS:
  - 20 AMP / 1-POLE, 120/277 VOLT, SPECIFICATION GRADE.
  - 2. WHERE MORE THAN ONE SWITCH OCCURS AT THE SAME LOCATION, ALL IN GANGS WITH ONE COVERPLATE, INSTALLED IN BOXES IN UNIFORM POSITION, SET TO OPEN AND CLOSE CIRCUITS BY MOVING IN THE SAME DIRECTION THROUGHOUT THE JOB.
  - 3. SWITCH AND RECEPTACLE PLATES SHALL BE:
    - WHITE AT T-3 WALL TILE LOCATIONS, AT T-3 WALL PAINT LOCATIONS, AND AT FRP-1 WALL LOCATIONS.
    - STAINLESS STEEL AT S-1 WALL LOCATIONS.
    - BROWN AT W-1 WALL LOCATIONS.
    - PAINTED MATCHING GRAPE AT P-1 WALL PAINT LOCATIONS.
- SAFETY SWITCHES AND FUSES: SAFETY SWITCHES SHALL BE PROVIDED AT ALL LOCATIONS INDICATED ON PLANS OR REQUIRED BY THE NATIONAL ELECTRICAL CODE. FUSIBLE SWITCHES SHALL BE IDENTIFIED WITH CLIPS FOR REJECTION TYPE FUSES AS MANUFACTURED BY SQUARE 'D', OR APPROVED SUBSTITUTION, FOR THE VOLTAGE AND LOAD VALUES. PROVIDE A COMPLETE SET OF FUSES IN ALL FUSED SWITCHES. PROVIDE FUSES AS INDICATED. NON-FUSIBLE SAFETY SWITCHES SHALL BE EQUIVALENT TO FUSIBLE TYPE WITHOUT USE OPTION.

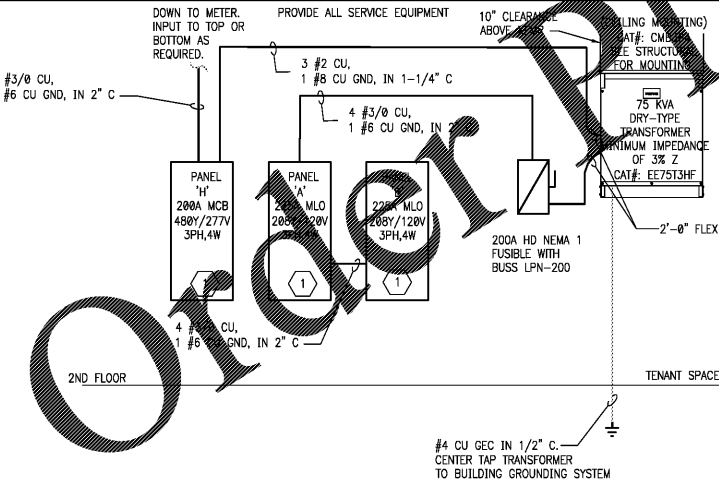
4 SPECIFICATIONS



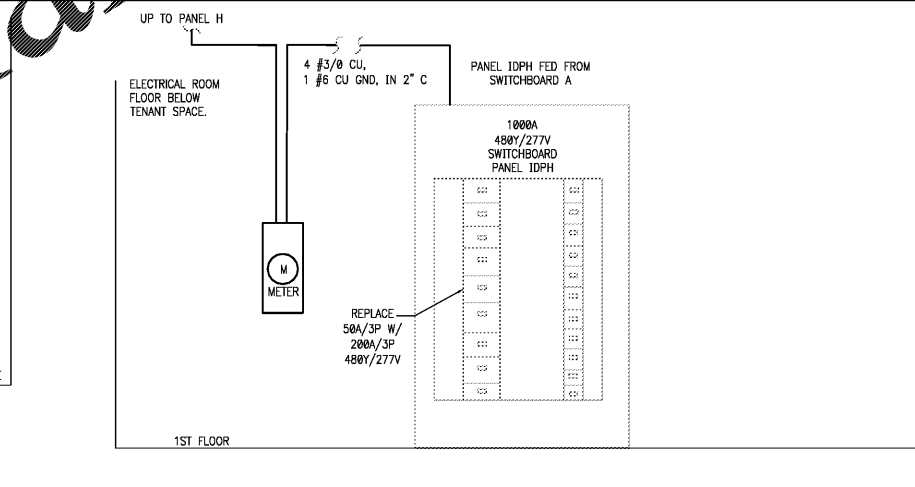
9 UNDER HOOD TRIP DETAIL

- GENERAL FIRE ALARM NOTES:
- 1. ALL DEVICES ARE NOT SHOWN ON THE RISER. REFER TO DRAWING FOR EXACT QUANTITY AND LOCATIONS OF DEVICES.
- 2. NOT ALL INTERCONNECTING WIRING IS INDICATED SUCH AS CONNECTION BETWEEN DUCT SMOKE DETECTORS IN HVAC EQUIPMENT.
- 3. FIRE ALARM SYSTEM JUNCTION BOXES SHALL BE PAINTED RED WITH STENCIL LETTERING INDICATING "FIRE ALARM SYSTEM".
- 4. WIRING SHOWN ON RISER IS DIAGRAMMATIC ONLY. PROVIDE WIRING FOR A COMPLETE AND FUNCTIONAL SYSTEM AS PER THE NFPA.
- 5. CONDUCTORS IN CABINET SHALL BE FORMED AND HARNESSSED SUCH THAT THE CONDUCTORS DROP OFF DIRECTLY OPPOSITE ITS TERMINAL.
- 6. COLOR CODE WIRING SHALL BE CONSISTENT THROUGHOUT THE SYSTEM AND SHALL ALLOW FOR EASY IDENTIFICATION OF INITIATING AND AUXILIARY CONTROL CIRCUITS.
- 7. DUCT DETECTOR BY FIRE ALARM CONTRACTOR, INSTALLED BY MECHANICAL CONTRACTOR AND WIRED BY FIRE ALARM CONTRACTOR. REPLACE DETECTOR IF EXISTING.
- 8. THIS DIAGRAM SHOWS ONLY DEVICES FOR SALATA SPACE.

10 FA DIAGRAM



5 ELECTRICAL RISER DIAGRAM



ELECTRICAL EQUIPMENT KEYED NOTES

- 1 REFER TO ELECTRICAL PANEL SCHEDULES FOR MORE INFORMATION.
- LINE TYPE LEGEND:
  - FUTURE
  - NEW
  - - - - - EXISTING

REVISIONS

2	01.04.18	ISSUED/RELEASED FOR CONSTRUCTION
1	10.28.17	LANDLORD COMMENTS
NO.	DATE	REMARKS

Salata  
PEACHTREE CENTER MALL  
231 PEACHTREE ST. NE SUITE B14  
ATLANTA, GA 30303

PROJECT NO: 2017.0221  
DATE: 12.08.2017

E4.0  
RISER & DETAILS

CHECKED: DAS DRAWN: C J B