

SEAL:
THIS DOCUMENT IS NOT FOR CONSTRUCTION
UNLESS THE ARCHITECT OR ENGINEER'S
SIGNATURE AND SEAL APPEAR BELOW.

ELECTRICAL NOTES:

- GROUND FAULT CURRENT INTERRUPT ABBREVIATED AS GFCI OR GFI.
- HEAT TRACE IN COOLER/FREEZER TO BE GFI CIRCUIT BREAKER
- TELECOMMUNICATIONS AND CABLE TV TO BE COORDINATED WITH LOCAL COMPANIES.
- ALL KITCHEN AND SALAD BAR RECEPTACLES TO BE GFCI/GFI OR PROTECTED BY A GFI CIRCUIT BREAKER
- VERIFY MOUNTING HEIGHT AND CONNECTION TYPE FOR ALL KITCHEN EQUIPMENT WITH OWNER AND KITCHEN VENDOR.
- MIN 48" CLEAR IN FRONT OF ELECTRICAL PANELS
- SEE ARCHITECTURAL SHEET A1.0 FOR COMPLETE KITCHEN EQUIPMENT SCHEDULE.

VERIFY IN FIELD ALL KITCHEN EQUIPMENT CONNECTIONS AND REQUIREMENTS PRIOR TO ROUGH-IN AND INSTALLATION OF DEVICES. VERIFY ALL DEVICE LOCATIONS AND MOUNTING HEIGHTS WITH FOOD SERVICE CONTRACTOR. MAKE ADJUSTMENTS IN FIELD TO MATCH ACTUAL EQUIPMENT BEING INSTALLED, AS DIRECTED BY THE FOOD SERVICE CONTRACTOR.

PROVIDE STANDARD RECEPTACLES FOR CIRCUITS DEDICATED TO SPECIFIC EQUIPMENT. SUBJECT TO THE APPROVAL OF CODE ENFORCING AGENCY.

ALL 125V, SINGLE PHASE 15 AMP AND 20 AMP RATED RECEPTACLES INSTALLED IN THE LOCATIONS SPECIFIED IN NECART 210.8 (B)(1) - (B) SHALL HAVE GROUND FAULT CIRCUIT INTERRUPTER PROTECTION.

NOTE THAT THE ISOLATED GROUNDING TYPE RECEPTACLES AND CLOCK TYPE RECEPTACLES LOCATED IN THE KITCHEN/SERVING AREA SHALL BE PROTECTED BY GROUND FAULT TYPE CIRCUIT BREAKERS RATHER THAN GROUND FAULT TYPE RECEPTACLES SINCE THESE RECEPTACLES ARE NOT AVAILABLE AS GROUND-FAULT TYPE RECEPTACLES. GFCI BREAKERS REQUIRE A DEDICATED NEUTRAL (NOT SHARED) TO OPERATE PROPERLY.

- WHERE EQUIPMENT IS ACCESSIBLE PROVIDE GFCI RECEPTACLE.
- WHERE EQUIPMENT IS INACCESSIBLE PROVIDE GFCI BREAKER.

ELECTRICAL DEVICE AND COVER PLATE COLOR

- PROVIDE WHITE ELECTRICAL DEVICES AND WHITE COVER PLATES
 - WHITE STAINED WOOD WALLS (IF APPLICABLE TO PROJECT)
 - WHITE PAINTED WALLS
 - GREEN PAINTED WALLS
 - WHITE WALL TILE
 - WHITE FRP
 - WHITE PLASTIC LAMINATE BOOTHS (IF APPLICABLE TO PROJECT)

- PROVIDE BLACK ELECTRICAL DEVICES AND BLACK COVER PLATES
 - GRANITE FINISHED WALLS
 - BROWN STAINED WOOD WALLS (IF APPLICABLE TO PROJECT)
 - BROWN PLASTIC LAMINATE BOOTHS (IF APPLICABLE TO PROJECT)

- PROVIDE BLACK ELECTRICAL DEVICES AND STAINLESS STEEL COVER PLATES
 - STAINLESS STEEL WALL PANELS

KEYED NOTES:

- MOUNT POWER, TELEPHONE, AND DATA OUTLETS BELOW COUNTER BOTTOM LEVELING OF POINT OF SALE STATION. REFER TO ARCHITECTURAL DRAWINGS FOR MILLWORK HEIGHTS. COORDINATE WITH PLUMBING FOR LOCATION OF ALL OUTLETS.
- PROVIDE NEMA 1 60A/3P HEAVY DUTY SAFETY SWITCH WITH BUSS BUS-50 CIRCUIT AS SHOWN.
- REAR POWER OUTLET TO ALIGN WITH RECESSED PLUG AT BACK REFRIGERATION UNIT.
- COOLER COMPRESSOR TO BE LOCATED IN EXTERIOR COURTYARD. COORDINATE EXACT LOCATION AND ROUTING REQUIREMENTS WITH LANDLORD'S FIELD REPRESENTATIVE PRIOR TO BID AND FABRICATION. PROVIDE 30A/2P NEMA 3R DISCONNECT. REFER TO SHEET E5.0 FOR PANEL SCHEDULES.
- PROVIDE POWER BELOW COUNTER.
- COORDINATE MOUNTING OF SHOW WINDOW RECEPTACLES WITH OWNER PRIOR TO ROUGH-IN. OUTLETS TO BE LOCATED ON THE CEILING.
- EVAPORATOR UNIT LOCATED INSIDE THE COOLER. REFER TO SHEET E5.0 FOR PANEL SCHEDULES. SEE PANEL SCHEDULE FOR HEAT TRACE CIRCUIT.
- NEMA 1 200A/3P FUSIBLE HEAVY DUTY DISCONNECT SWITCH FOR SECONDARY SIDE OF 75KVA TRANSFORMER.
- MAKE PENETRATIONS IN WALK-IN COOLER WITH CONDUIT SEALING FITTINGS & NIPPLE TO CAST FIXTURE J-BOX SURFACE MOUNTED ON COOLER CEILING FOR LIGHTS. REFER TO DETAIL 8 ON SHEET E4.0.
- PROVIDE WP JBOX FOR THE SIGN. VERIFY EXACT LOCATION AND MOUNTING HEIGHT WITH OWNER'S SIGN VENDOR.
- MOUNT TWO (2) QUAD RECEPTACLES OVER PREP TABLE AREA IN SOFFIT. RUN TWO (2) 1-1/4" CONDUITS FROM SOFFIT, ABOVE THE CEILING, RUN ONE CONDUIT DOWN TO EACH POS FOR LOW VOLTAGE CONNECTION. SEE POS AND SOFFIT DETAIL ON ARCHITECTURAL SHEET A4.0 FOR ADDITIONAL REQUIREMENTS AND CLARIFICATION.
- PROVIDE CONTACTORS FOR HOOD EQUIPMENT INTERFACE. WIRE EQUIPMENT UNDER THE HOOD THRU CONTACTOR TO DISABLE COOKING EQUIPMENT IN THE EVENT OF A FIRE OR HOOD MALFUNCTION. SEE DETAIL 9/E4.0.
- PROVIDE TIME CLOCKS AND MOUNT ABOVE PANEL 'A'. REFER TO DETAIL 2/E4.0.
- PROVIDE 2" EMPTY CONDUIT WITH MULLETAPE FOR PULLING TELEPHONE CABLES FROM LANDLORD BUILDING SERVICE ENTRANCE INTO THE SOFFIT CURBIE ABOVE THE POS ADJACENT TO THE DUPLEX OUTLETS. SEE ARCHITECTURAL SHEET A4.0 FOR ADDITIONAL REQUIREMENTS AND CLARIFICATION. PROVIDE EQUIPMENT GROUNDING CONDUCTORS AND GROUND BUS FOR TELEPHONE EQUIPMENT. PROVIDE GROUNDING BUS AND #6 CU TO ELECTRICAL SYSTEM GROUND.
- NOT USED.
- NOT USED.
- VERIFY ELECTRICAL REQUIREMENTS FOR BLAST CHILLER PRIOR TO INSTALLATION.
- PROVIDE PASS & SEYMOUR 2095TRW TRADE MASTER GFI RECEPTACLE.
- RECEPTACLE TO BE ON THE KITCHEN SIDE OF THE WALL.
- PROVIDE JUNCTION BOX FOR VENTLESS HOOD SYSTEM.
- NOT USED.
- VERIFY DISCONNECT IS WORKING AND IN GOOD CONDITION. CIRCUIT AS SHOWN.
- EXACT LOCATION OF HOOD FIRE SUPPRESSION PULL STATION DETERMINED BY THE LOCAL FIRE MARSHALL.
- PROVIDE JUNCTION BOX IF NOT EXISTING FOR INTEGRATED CONTROLS IN WALK-IN COOLER. CONNECT TO THE CIRCUIT INDICATED.

2	01.04.18	ISSUED/RELEASED FOR CONSTRUCTION
1	12.28.17	LANDLORD COMMENTS
	NO. DATE	REMARKS

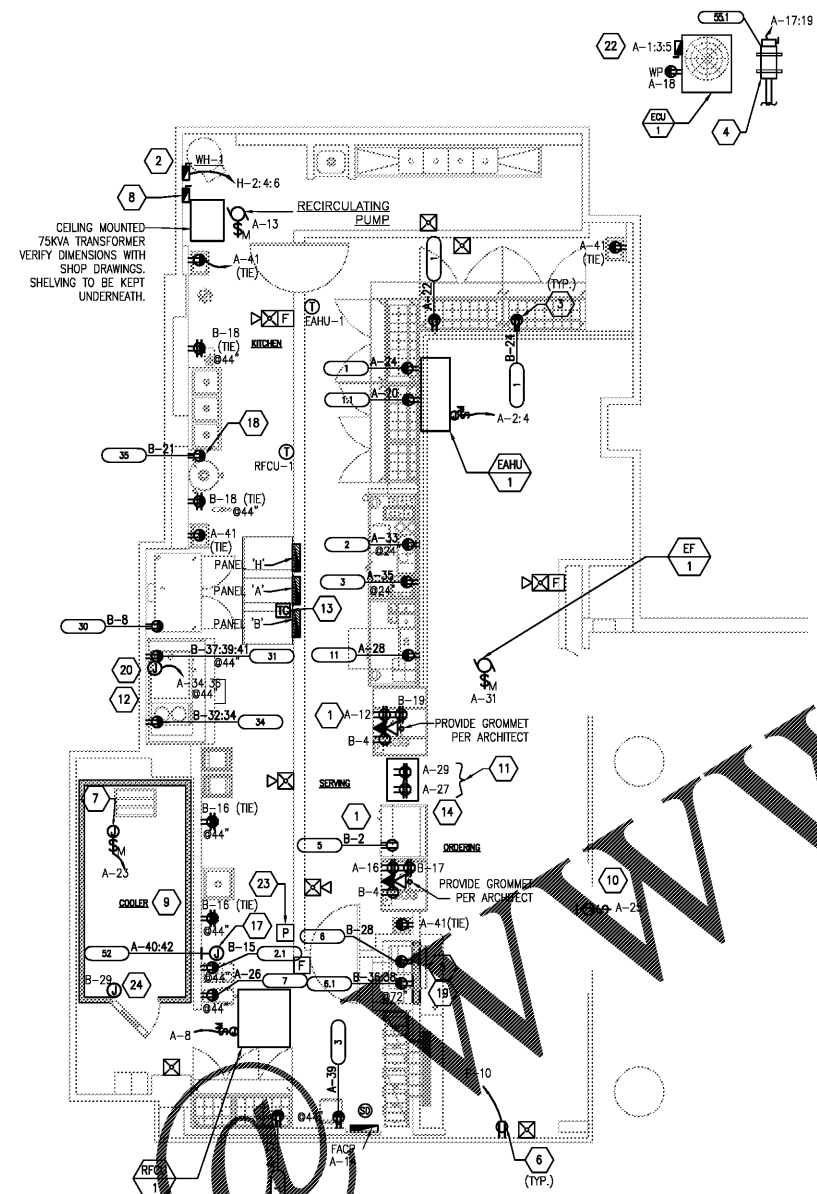
REVISIONS

Salata
PEACHTREE CENTER MALL
231 PEACHTREE ST. NE SUITE B14
ATLANTA, GA 30303

PROJECT NO: 2017.0221
DATE: 12.08.2017

E2.0
POWER FLOOR PLAN

CHECKED: DAS DRAWN: C J B



GC TO VERIFY FIRE ALARM SCOPE OF WORK WITH LANDLORD CONSTRUCTION REPRESENTATIVE PRIOR TO BID.

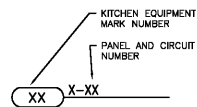
ALL PENETRATION THROUGH THE CEILING/FLOOR ASSEMBLY NEED TO BE RATED. VERIFY RATING WITH LANDLORD CONSTRUCTION REPRESENTATIVE PRIOR TO BID.

ITEM NO.	QTY.	EQUIPMENT CATEGORY
1	3	REFRIGERATOR, SANDWICH/SALAD PREP.
1.1	2	REFRIGERATOR, SANDWICH/SALAD PREP.
2	1	DROP-IN, HOT WELLS
2.1	1	SOUP WELL
3	2	TORTILLA PRESS
5	1	DISPLAY CASE
6	1	ICE/WATER DISPENSER
6.1	1	ICE MACHINE, NUGGET STYLE
7	1	COFFEE/TEA BREWER
11	1	WARMER DRAWER TYPE
30	1	FREEZER
31	1	OVEN-STEAMER
34	1	HOT-PLATES
35	1	SALAD DRYER
50	1	HOOD
52	1	BLAST CHILLER/SHOCK FREEZER
55	1	WALK-IN COOLER
55.1	1	COOLER REMOTE CONDENSER

1 POWER FLOOR PLAN

3/16"=1'-0"

2 KITCHEN EQUIPMENT NOMENCLATURE NTS



Order Plans

INTERPLAN, LLC RESERVE COPYRIGHTS & OTHER RIGHTS RESTRICTING THESE DOCUMENTS TO THE ORIGINAL SET OR PURPOSE FOR WHICH THEY WERE PREPARED. REPRODUCTIONS, CHANGES OR ASSIGNMENTS ARE PROHIBITED. COPYRIGHT © 2017