

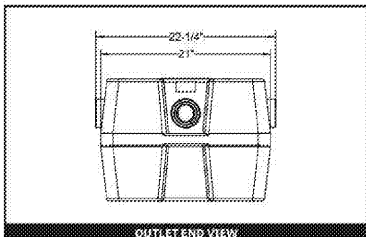
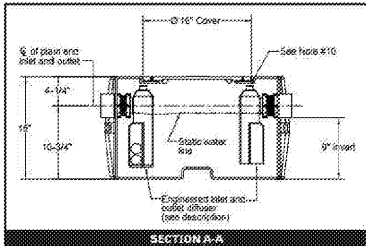
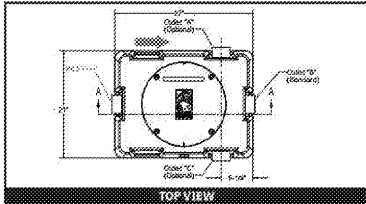
SPECIFICATIONS

- NOTES**
1. 3" clean and intercept.
 2. 1 1/2" height - 1/4" diameter 3" covers.
 3. Maximum spacing between covers 18" if continuous.
 4. Displacement - 1/2" gal. flow rate. 25 lbs. (2) 4 gal. buckets @ 5 gal.
 5. Backflow preventer.
 6. 2" or greater clearance application only.
 7. Do not use for pressure applications.
 8. Cover - 1/2" diameter 3" covers. Full access to backflow preventer.
 9. 1/2" height of flow and diameter. Minimum 1/2" height of flow and diameter.
 10. 1/2" height of flow and diameter. Minimum 1/2" height of flow and diameter.
 11. 1/2" height of flow and diameter. Minimum 1/2" height of flow and diameter.

DIFFUSION FLOW TECHNOLOGY
 The Schier Grease Interceptor is designed to capture grease and debris before it enters the sewer system. The patented diffusion flow technology allows grease to rise to the top of the unit where it is captured. The bottom of the unit is designed to allow clean water to pass through. The unit is made of high quality polypropylene and is designed to last for many years.

ENGINEER SPECIFICATION GUIDE
 Schier Grease Interceptor Model # GB-25 is a 25 gallon capacity unit. It is designed for use in residential applications. The unit is made of high quality polypropylene and is designed to last for many years. The unit is designed to capture grease and debris before it enters the sewer system. The unit is made of high quality polypropylene and is designed to last for many years.

CERTIFIED PERFORMANCE
 The Schier Grease Interceptor Model # GB-25 is certified to meet or exceed the performance requirements of the International Plumbing Code (IPC) and the Uniform Plumbing Code (UPC). The unit is designed to capture grease and debris before it enters the sewer system. The unit is made of high quality polypropylene and is designed to last for many years.



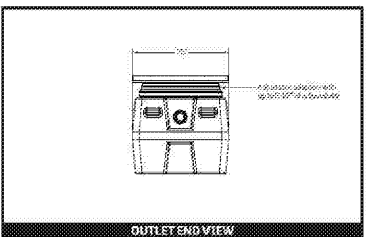
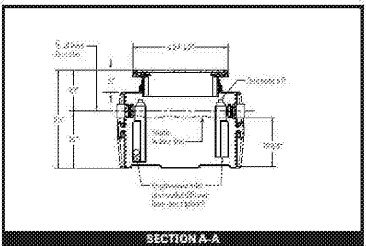
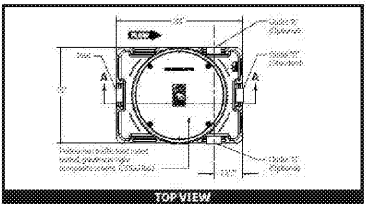
SPECIFICATIONS

- NOTES**
1. 3" clean and intercept.
 2. 1 1/2" height - 1/4" diameter 3" covers.
 3. Maximum spacing between covers 18" if continuous.
 4. Displacement - 1/2" gal. flow rate. 25 lbs. (2) 4 gal. buckets @ 5 gal.
 5. Backflow preventer.
 6. 2" or greater clearance application only.
 7. Do not use for pressure applications.
 8. Cover - 1/2" diameter 3" covers. Full access to backflow preventer.
 9. 1/2" height of flow and diameter. Minimum 1/2" height of flow and diameter.
 10. 1/2" height of flow and diameter. Minimum 1/2" height of flow and diameter.
 11. 1/2" height of flow and diameter. Minimum 1/2" height of flow and diameter.

DIFFUSION FLOW TECHNOLOGY
 The Schier Grease Interceptor is designed to capture grease and debris before it enters the sewer system. The patented diffusion flow technology allows grease to rise to the top of the unit where it is captured. The bottom of the unit is designed to allow clean water to pass through. The unit is made of high quality polypropylene and is designed to last for many years.

ENGINEER SPECIFICATION GUIDE
 Schier Grease Interceptor Model # GB-35 is a 35 gallon capacity unit. It is designed for use in residential applications. The unit is made of high quality polypropylene and is designed to last for many years. The unit is designed to capture grease and debris before it enters the sewer system. The unit is made of high quality polypropylene and is designed to last for many years.

CERTIFIED PERFORMANCE
 The Schier Grease Interceptor Model # GB-35 is certified to meet or exceed the performance requirements of the International Plumbing Code (IPC) and the Uniform Plumbing Code (UPC). The unit is designed to capture grease and debris before it enters the sewer system. The unit is made of high quality polypropylene and is designed to last for many years.



SCHIER MODEL NUMBER: **GB-25** DESCRIPTION: Polypropylene High Efficiency Grease Interceptor
 LIFETIME GUARANTEED GREASE INTERCEPTOR
 25 GALLON CAPACITY

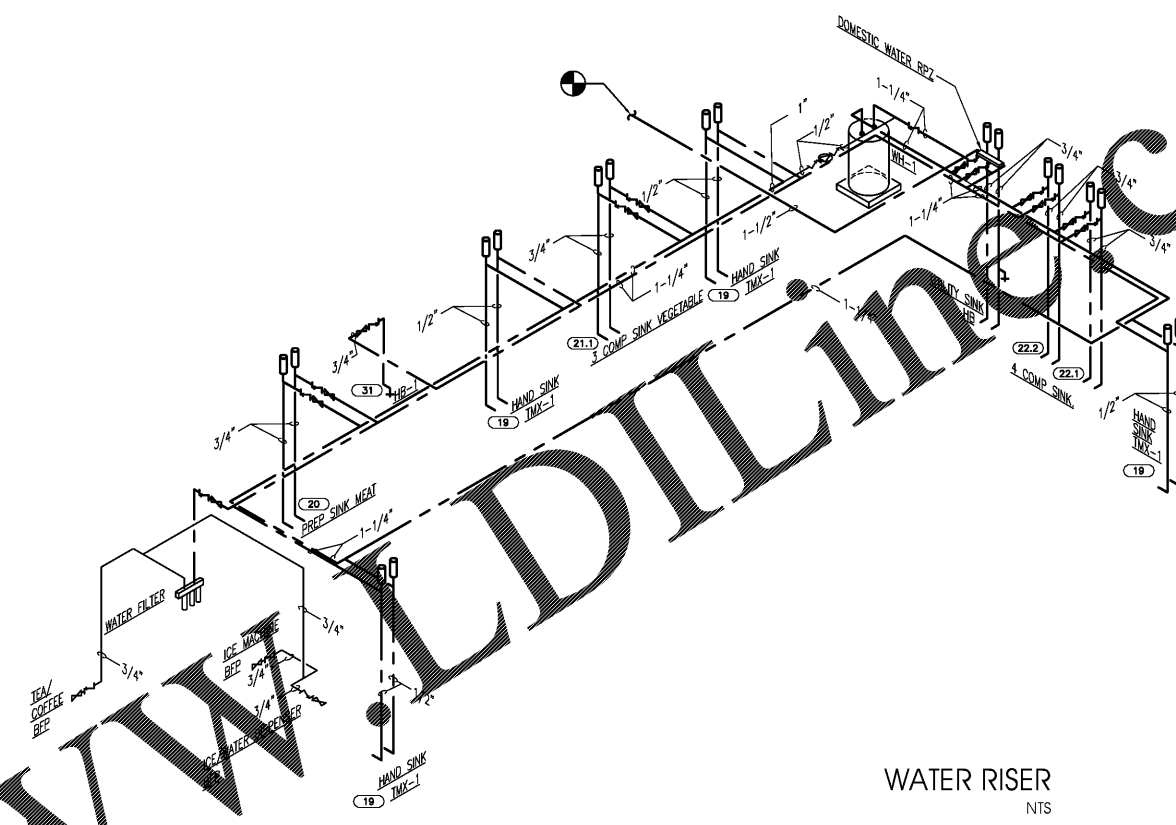
SCHIER MODEL NUMBER: **GB-35** DESCRIPTION: Polypropylene High Efficiency Grease Interceptor
 LIFETIME GUARANTEED GREASE INTERCEPTOR
 35 GALLON CAPACITY

© Copyright 2017 Schier. All Rights Reserved.

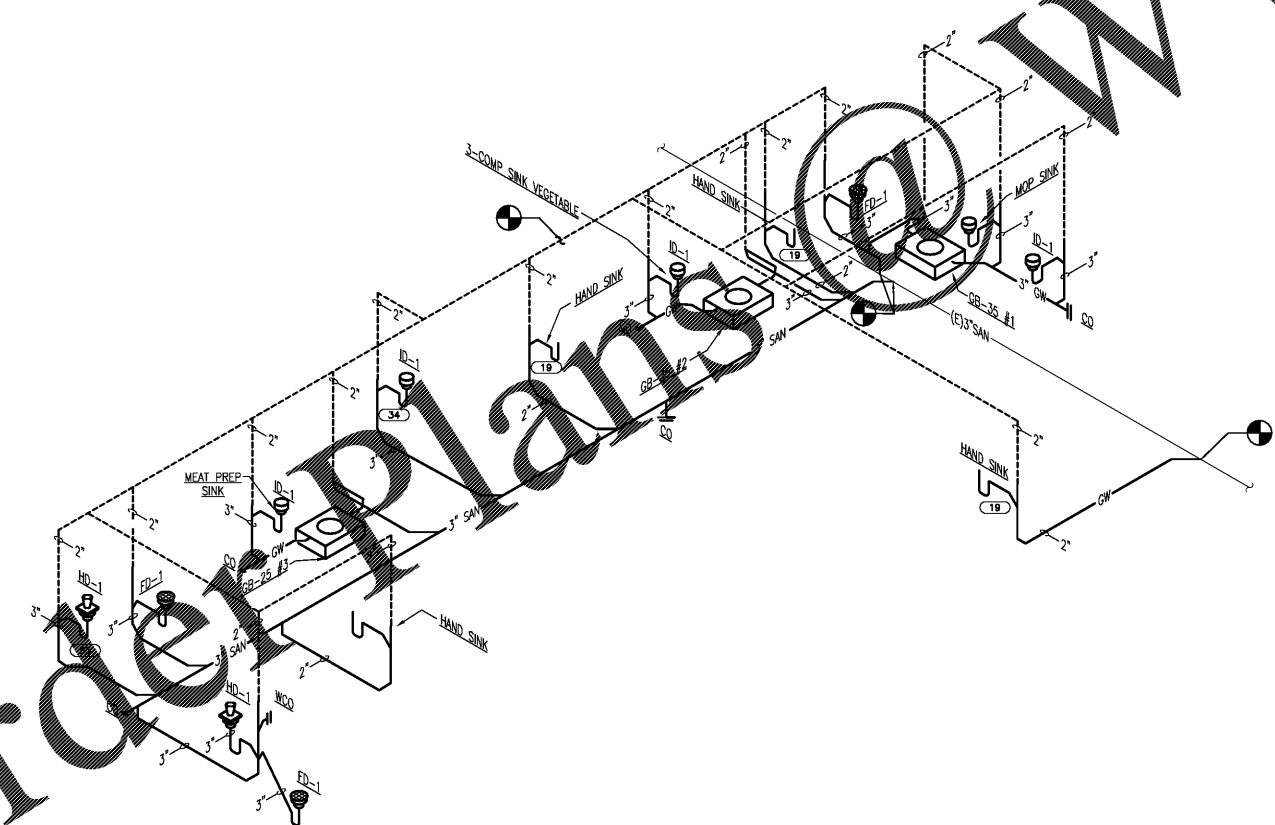
© Copyright 2017 Schier. All Rights Reserved.

INTERPLAN
 ARCHITECTURE
 ENGINEERING
 INTERIOR DESIGN
 PROJECT MANAGEMENT
 604 COURTLAND STREET
 SUITE 100
 ORLANDO, FLORIDA 32804
 PH 407.645.5008
 FX 407.629.9124

SEAL:
 THIS DOCUMENT IS NOT FOR CONSTRUCTION
 UNLESS THE ARCHITECT OR ENGINEER'S
 SIGNATURE AND SEAL APPEAR BELOW.



WATER RISER
 NTS



WASTE RISER
 NTS

Order Plans @ www.worldplans.com

REVISIONS

2	01.04.18	ISSUED/RELEASED FOR CONSTRUCTION
1	12.28.17	LANDLORD COMMENTS
	NO. DATE	REMARKS

Salata
 PEACHTREE CENTER MALL
 231 PEACHTREE ST. NE SUITE B14
 ATLANTA, GA 30303

PROJECT NO: 2017.0221
 DATE: 12.08.2017

P1.4
 PLUMBING RISERS

CHECKED: PD DRAWN: AC

INTERNET/LLC RESERVE COPYRIGHT & OTHER RIGHTS RESTRICTING THESE DOCUMENTS TO THE ORIGINAL SET OR PURPOSE FOR WHICH THEY WERE PREPARED. REPRODUCTIONS, CHANGES OR ASSIGNMENTS ARE PROHIBITED. COPYRIGHT © 2017