

SEAL:
THIS DOCUMENT IS NOT FOR CONSTRUCTION
UNLESS THE ARCHITECT OR ENGINEER'S
SIGNATURE AND SEAL APPEAR BELOW.

2	01.04.18	ISSUED/RELEASED FOR CONSTRUCTION
1	12.28.17	LANDLORD COMMENTS
	NO. DATE	REMARKS

REVISIONS

Salata

PEACHTREE CENTER MALL
231 PEACHTREE ST. NE SUITE B14
ATLANTA, GA 30303

PROJECT NO: 2017.0221
DATE: 12.08.2017

P1.1
SANITARY FLOOR PLAN

CHECKED: PD DRAWN: AC

KEYED NOTES #

- FIELD LOCATE AND CONNECT NEW SANITARY PIPING TO EXISTING SANITARY PIPING. GC TO VERIFY EXISTING INVERT ELEVATION PRIOR TO STARTING WORK. VERIFY EXISTING PIPES DEPTH IS SUFFICIENT TO ALLOW THE NEW WASTE TO BE SLOPED DOWN INTO THE WASTE PIPE. PROVIDE SANITARY BENDS IF INVERT CANNOT BE MET. GC TO VERIFY LOCATION OF EXISTING SANITARY PIPING PRIOR TO BID AND COORDINATE ROUTING OF NEW SANITARY WITH FRANCHISEE AND LANDLORD CONSTRUCTION REPRESENTATIVE.
- FIELD LOCATE AND CONNECT TO EXISTING VENT PIPING. GC TO VERIFY LOCATION OF EXISTING SANITARY VENT PIPING PRIOR TO BID AND COORDINATE ROUTING OF NEW SANITARY VENT PIPING WITH FRANCHISEE AND LANDLORD CONSTRUCTION REPRESENTATIVE.
- 2" INDIRECT WASTE FROM SINK TO BE DISCHARGED INTO INCREASER DRAIN
- MINIMUM SLOPE FOR SANITARY SEWER AND GREASE LINE TO BE 1/8" MIN
- 2" WASTE DOWN 1-1/2" VENT UP FROM SINK/LAV
- PROVIDE FLOOR DRAIN WITH TRAP PRIMER
- NOT USED.
- FURNISHED BY KITCHEN VENDOR, INSTALLED BY G.C. PLUMBER, E.C. TO PROVIDE AND INSTALL PLUMBING CONNECTIONS FOR WASTE AND VENT LINE.
- ROUTE T&P DRAIN FOR WATER HEATER ALONG WITH FLOOR DRAIN AS REQUIRED. COORDINATE EXACT REQUIREMENTS PRIOR TO
- NOT USED.
- ROUTE INDIRECT WASTE FROM ICE DRAIN, ICE MACHINE AND ICE MACHINE CONDENSER THROUGH CABINET AND INTO INCREASER DRAIN AS SHOWN.
- NOT USED.
- PROVIDE TRAP TRACE FOR COOLER/FREEZER CONDENSATE DRAIN. ELECTRICIAN TO PROVIDE JUNCTION BOX.
- COORDINATE EXACT LOCATION OF FLOOR DRAIN WITH OWNER. FLOOR DRAIN TO BE UNDER STANDING MAT IN FRONT OF DRINK DISPENSERS.
- COORDINATE THE LOCATION OF THE INCREASER DRAIN/HUB DRAIN AND DRAIN PIPING TO AVOID CONFLICTS WITH WORK TABLE LEGS / CASTERS.

ALL PENETRATIONS THROUGH THE CEILING/FLOOR ASSEMBLY MUST BE RATED. VERIFY RATING WITH LANDLORD CONSTRUCTION REPRESENTATIVE PRIOR TO BID.

ICE MACHINE, 3 COMPARTMENT SINK, 4 COMPARTMENT SINK AND PREP SINK TO BE INDIRECTLY CONNECTED.

FIELD VERIFY ALL CONDITIONS

NOTE:
AS NOTED IN THE SPECIFICATIONS, ALL WIRING LAYOUTS, PIPING LAYOUTS AND DUCT LAYOUTS ARE SCHEMATIC. EXACT LOCATIONS SHALL BE DETERMINED BY THE CONSTRUCTION AND STRUCTURE OF THE BUILDING AND SHALL BE VERIFIED AND COORDINATED IN THE FIELD. EACH TRADE CONTRACTOR SHALL VERIFY WITH THE GENERAL CONTRACTOR THAT HE HAS THOROUGHLY REVIEWED AND COORDINATED ALL LOCATIONS AND ROUTINGS WITH ALL OTHER TRADES PRIOR TO FABRICATION OF CONDUITS, DUCTS, OR PIPING, AND START OF INSTALLATION OF SAME (INCLUDING SPRINKLER PIPING WHEN PRESENT ON JOB). ANY INSTALLATION OR CONSTRUCTION CONFLICTS WHICH OCCUR IN THE FIELD SHALL BE RESOLVED BY THE TRADE CONTRACTOR TO THE SATISFACTION OF THE OWNER AND ARCHITECT AND AT NO EXPENSE TO THE OWNER, ARCHITECT AND/OR GENERAL CONTRACTOR.

THE CONTRACTOR SHALL CONTACT THE ARCHITECT, ENGINEER OR OWNER PRIOR TO BIDDING FOR INTERPRETATIONS AND CLARIFICATIONS OF THE DESIGN AND INCLUDE IN HIS BID ALL COSTS TO MEET THE DESIGN INTENT. CLARIFICATIONS MADE BY THE ARCHITECT, ENGINEER OR OWNER AFTER BIDDING WILL BE FINAL AND SHALL BE IMPLEMENTED AT CONTRACTORS COST.

BIDDING CONTRACTORS SHALL HAVE A WORKING KNOWLEDGE OF LOCAL CODES AND ORDINANCES AND SHALL INCLUDE IN THEIR BIDS THE COSTS FOR ALL WORK INSTALLED IN STRICT ACCORDANCE WITH GOVERNING CODES, THE PLANS AND SPECIFICATIONS NOT WITHSTANDING. THE CONTRACTOR SHALL ALERT ARCHITECT, ENGINEER OR OWNER OF ANY APPARENT DISCREPANCIES BETWEEN GOVERNING CODES AND DESIGN INTENT.

GREASE INTERCEPTOR #1 CALCULATIONS (GB-35)

SYMBOL	FIXTURE TYPE	COMPARTMENT QUANTITY	L	W	D	VOLUME (CU. IN.)	VOLUME (GALLONS)	% FULL	DRAIN TIME (MINUTES)	DRAINAGE LOAD (GALLONS)
48	UTILITY SINK	1	16	18	12	3456	15.0	0.75	2	5.6
22	4-COMP SINK	4	18	18	14	18144	78.5	0.75	2	29.5
MAXIMUM FLOW RATE (GPM):										35

GREASE INTERCEPTOR #2 CALCULATIONS (GB-35)

SYMBOL	FIXTURE TYPE	COMPARTMENT QUANTITY	L	W	D	VOLUME (CU. IN.)	VOLUME (GALLONS)	% FULL	DRAIN TIME (MINUTES)	DRAINAGE LOAD (GALLONS)
21	3-COMP SINK	3	18	18	14	13608	58.9	0.75	2	22.1
*TOTAL FIXTURE FLOW RATE (GPM):										22.1
MAXIMUM FLOW RATE (GPM):										22

GREASE INTERCEPTOR #3 CALCULATIONS (GB-25)

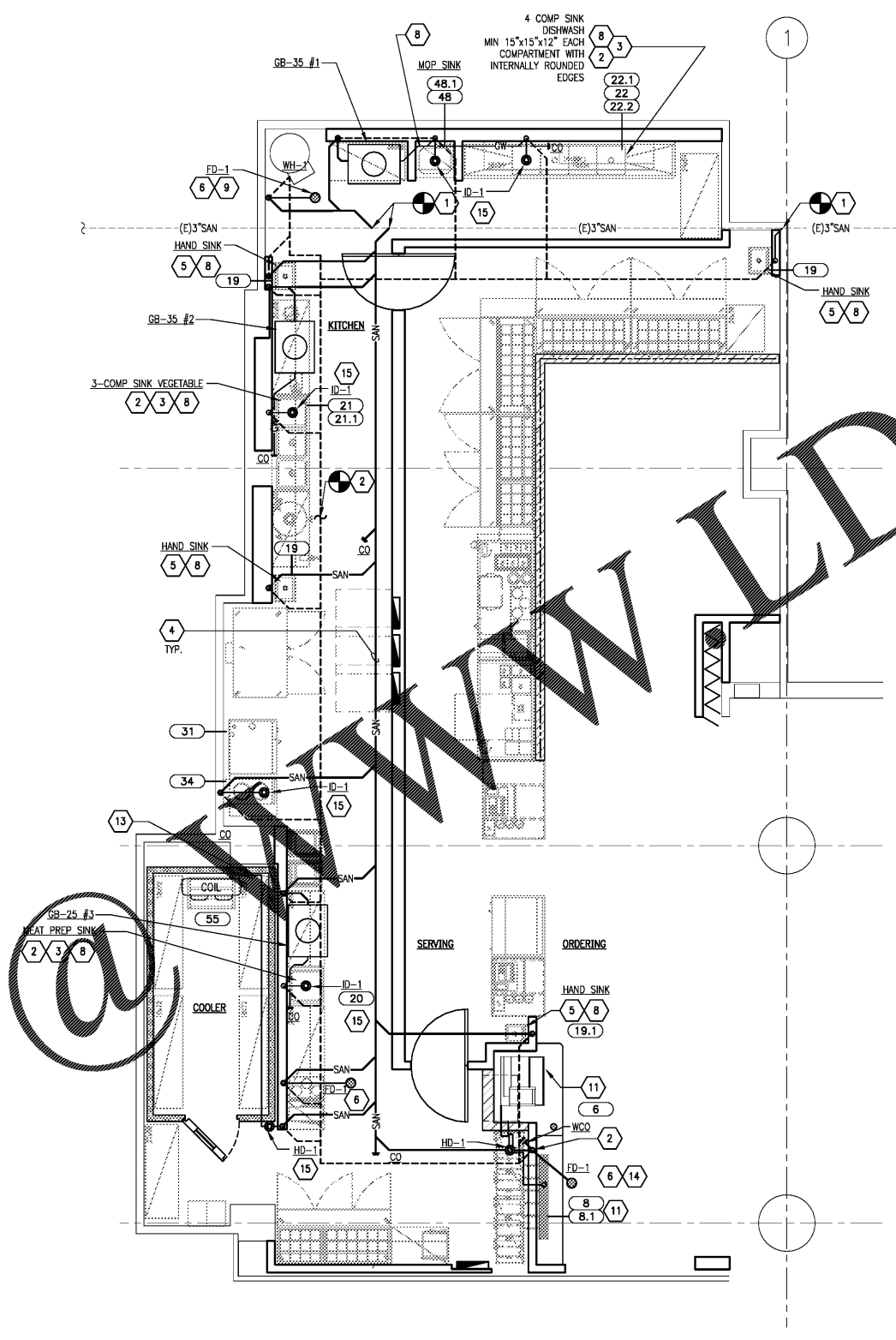
SYMBOL	FIXTURE TYPE	COMPARTMENT QUANTITY	L	W	D	VOLUME (CU. IN.)	VOLUME (GALLONS)	% FULL	DRAIN TIME (MINUTES)	DRAINAGE LOAD (GALLONS)
20	SINK	1	18	18	12	3888	16.8	0.75	2	6.3
*TOTAL FIXTURE FLOW RATE (GPM):										6.3
MAXIMUM FLOW RATE (GPM):										6

DRAINAGE FIXTURE UNITS SCHEDULE

TYPE OF FIXTURE	FIXTURE DESIGNATION	QTY.	FK. UNITS (EACH)	MINIMUM FIX. TRAP AND DRAIN SIZE	TOTAL FIX. UNITS	NOTES
HUB DRAIN	HD	2	5.0	3"	10.0	X
FLOOR DRAIN	FD	3	5.0	3"	15.0	X
HAND SINK	19	4	1.0	2"	4.0	X
MOP BASIN	48	1	2.0	3"	2.0	X
INCREASER DRAIN	ID-1	5	5	3"	25.0	X
TOTAL DRAINAGE FIXTURE UNITS: 56						

EQUIPMENT SCHEDULE

ITEM NO	QTY	EQUIPMENT
6	1	DISPENSER, ICE/WATER, LOW-PROFILE, MANUAL LOAD
8	1	TEA TAP SYSTEM
8.1	1	DRIP TRAY 6 X 54, W/ WALL SPLASH
19	3	HAND SINK, WALL MOUNT, W/ HANDS-FREE FAUCET
20	1	SINK, NSF, 1 COMP, 18 GAUGE, W/ 18" FAUCET
21	1	SINK, NSF, 3 COMP, W/ FAUCET, MODIFY RIGHT BOWL TO 18" DEPTH
21.1	1	FAUCET, 12" SPOUT
22	1	SINK, NSF, 4 COMP, 18 GAUGE
22.1	1	FAUCET, 18" SPOUT
22.2	1	PRE-RINSE FAUCET, WALL MOUNT
31	1	OVEN-STEAMER, COMBINATION, ELECTRIC
34	1	HOT PLATE, ELECTRIC
48	1	SINK, MOP
48.1	1	FAUCET, UTILITY
55	1	WATER COOLER, SEE APPROVAL DRAWING



PLUMBING WASTE PLAN
1/4" = 1'-0"
NORTH

Order Plans

INTERNET USE: REPRODUCTION OF THIS DOCUMENT IS PROHIBITED. REPRODUCTION, CHANGES OR ASSIGNMENTS ARE PROHIBITED.