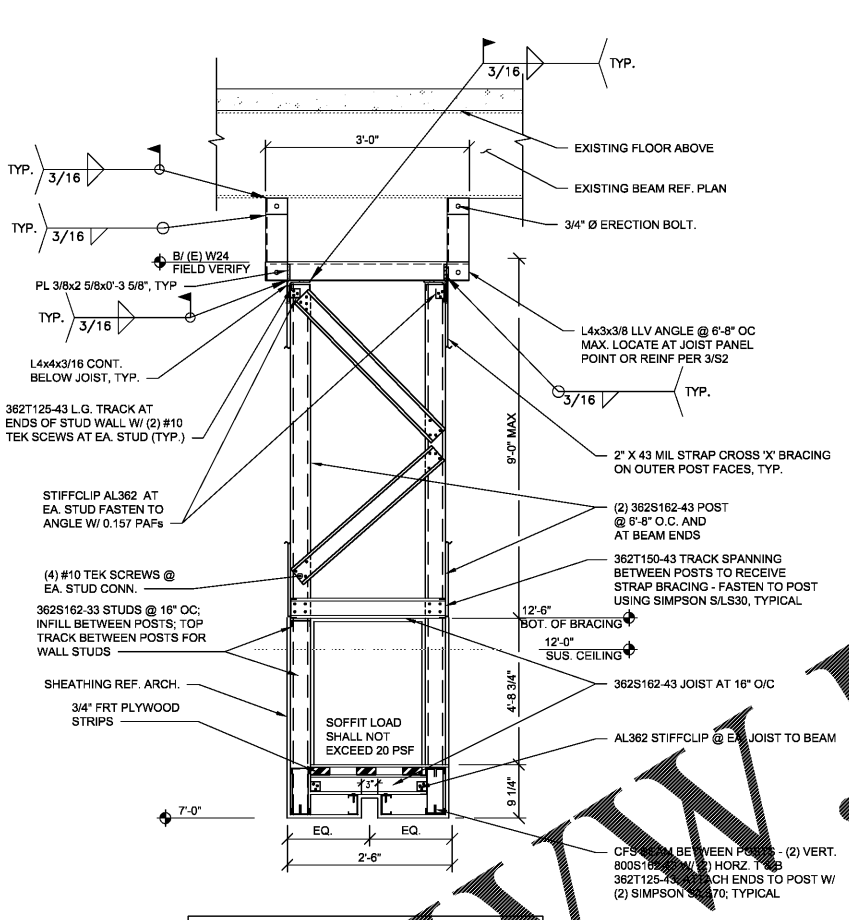


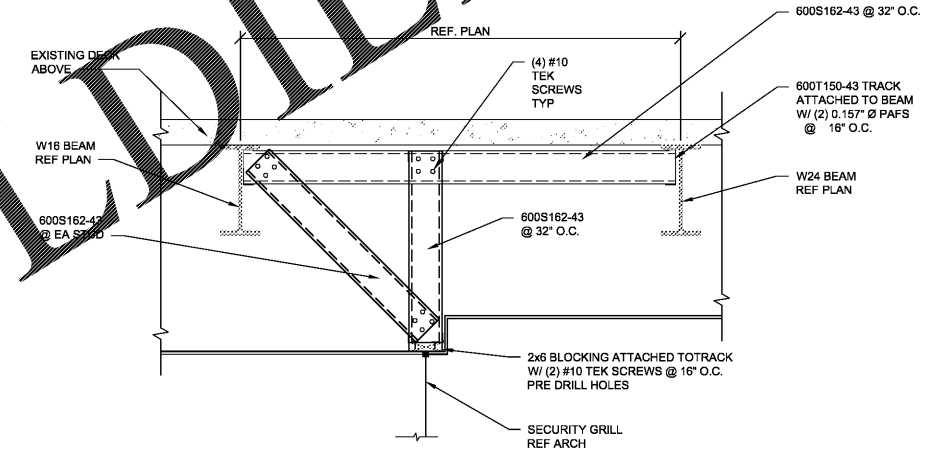
NOTE: EXISTING CEILING HAS 1 HR SPRAY FIRE PROOFING. PROVIDE/REPAIR FIRE PROOFING AS NEEDED AFTER SOFFIT FRAMING INSTALLATION, TO MAINTAIN 1 HR FIRE RATING

SECTION 1
3/4" = 1'-0"

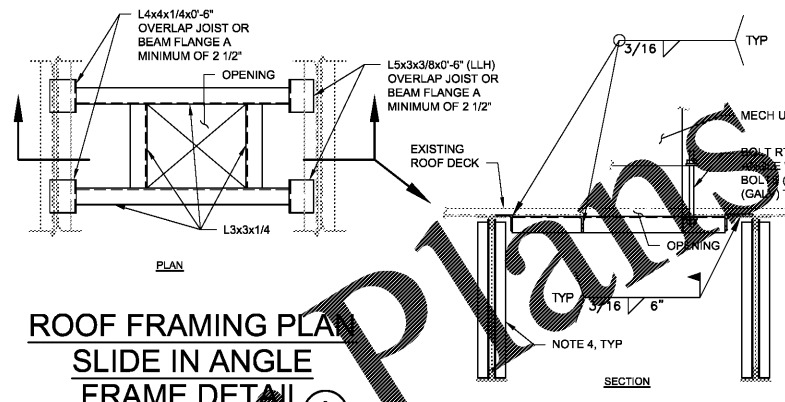


NOTE: EXISTING CEILING HAS 1 HR SPRAY FIRE PROOFING. PROVIDE/REPAIR FIRE PROOFING AS NEEDED AFTER SOFFIT FRAMING INSTALLATION, TO MAINTAIN 1 HR FIRE RATING

SECTION 2
3/4" = 1'-0"



SECTION 4
3/4" = 1'-0"



ROOF FRAMING PLAN
SLIDE IN ANGLE
FRAME DETAIL
3/4" = 1'-0"

- NOTES:
1. SLIDE L5x3 END OF FRAME BETWEEN DECK AND JOIST/BEAM, RAISE L4x4 END AND SLIDE BETWEEN DECK AND ADJACENT JOIST/BEAM SO THAT EACH SIDE OF THE FRAME HAS A MINIMUM OF 2 1/2" OVERLAP WITH THE SUPPORTING MEMBER.
 2. THE FRAME IS DESIGNED FOR A LOAD OF 400-POUNDS AT EACH FRAME SUPPORT (1.2 KIPS PER FRAME TOTAL).
 3. CONTACT THE ENGINEER IF THE SUPPORTING MEMBER IS LESS THAN 3/16" IN THICKNESS.
 4. JOIST STIFFENER REQUIRED AT MECH. SLIDE IN ANGLE FRAMES. SEE DETAIL 3/S2.

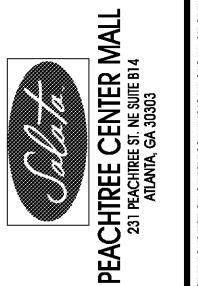
VERIFICATION AND INSPECTION	FREQUENCY OF INSPECTION		REFERENCED STANDARD	IBC REFERENCE
	CONTINUOUS	PERIODIC		
STEEL CONSTRUCTION				
1. FABRICATOR AND ERECTOR DOCUMENTS	-	X	AISC 360	1705.2
2. MATERIAL VERIFICATION OF STRUCTURAL STEEL	-	X	AISC 360, N3	
A. IDENTIFICATION MARKINGS TO CONFORM TO ASTM STANDARDS SPECIFIED IN THE APPROVED CONSTRUCTION DOCUMENTS	-	X	AISC 360, A3	
B. MANUFACTURER'S CERTIFIED MILL TEST REPORTS	-	X	AISC 360, A3	
3. EMBEDMENTS	-	X		1705.3
4. VERIFY MEMBER LOCATIONS, BRACES, STIFFENERS, AND APPLICATION OF JOINT DETAILS AT EACH CONNECTION COMPLY WITH CONSTRUCTION DOCUMENTS	-	X		
STRUCTURAL STEEL WELDING				
A. INSPECTION TASKS PRIOR TO WELDING	-	X	AISC 360, N5.4	
B. INSPECTION TASKS DURING TO WELDING	-	X	AISC 360, N5.4	
C. INSPECTION TASKS AFTER TO WELDING	-	X	AISC 360, N5.4	
STRUCTURAL STEEL BOLTING				
A. INSPECTION TASKS PRIOR TO BOLTING	-	X	AISC 360, N5.6	
B. INSPECTION TASKS DURING TO BOLTING	-	X	AISC 360, N5.6	
C. INSPECTION TASKS AFTER TO BOLTING	-	X	AISC 360, N5.6	

SCHEDULE OF SPECIAL INSPECTIONS
3/4" = 1'-0"

SECTION 5
3/4" = 1'-0"

REVISIONS

2	01.04.18	ISSUED/RELEASED FOR CONSTRUCTION
1	12.20.17	LANDLORD COMMENTS
NO.	DATE	REMARKS



PROJECT NO: 2017.0221
DATE: 12.08.2017

S2
STRUCTURAL SECTIONS

CHECKED: DA DRAWN: RW

Order Plans @ WWW.LDLine.com

INTERPLAN LLC RESERVE COPYRIGHT & OTHER RIGHT RESTRICTING THESE DOCUMENTS TO THE ORIGINAL SIZE OR PURPOSE FOR WHICH THEY WERE PREPARED. REPRODUCTIONS, CHANGES OR ASSIGNMENTS ARE PROHIBITED. COPYRIGHT © 2017