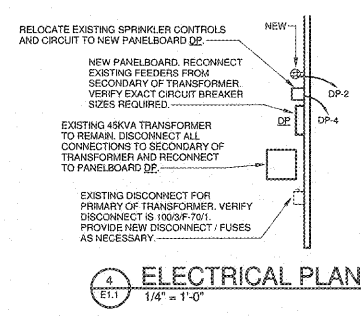


ELECTRICAL LEGEND	
SYMBOL	LEGEND INFORMATION
[Symbol]	LIGHTING FIXTURE. MOUNT AS INDICATED OR SCHEDULED. SEE LIGHTING FIXTURE SCHEDULE.
[Symbol]	WALL SWITCH, SINGLE POLE. MOUNT AT 4'-0" AFF OR AS NOTED.
[Symbol]	RECEPTACLE, DUPLEX. MOUNT AT 1'-6" AFF OR AS NOTED.
[Symbol]	RECEPTACLE, DUPLEX, GFCI. MOUNT AT 1'-6" AFF OR AS NOTED.
[Symbol]	RECEPTACLE, DUPLEX, GFCI, WITH WEATHERPROOF IN-USE COVER. MOUNT AT 1'-6" AFF OR AS NOTED.
[Symbol]	OUTLET BOX OR JUNCTION BOX WITH COVER PLATE. SEE DRAWINGS FOR REQUIREMENTS.
[Symbol]	DISCONNECT SWITCH. FRAME SIZE / POLES / FUSE RATING / NEMA RATING.
[Symbol]	MOTOR. SEE DRAWINGS FOR SIZE.

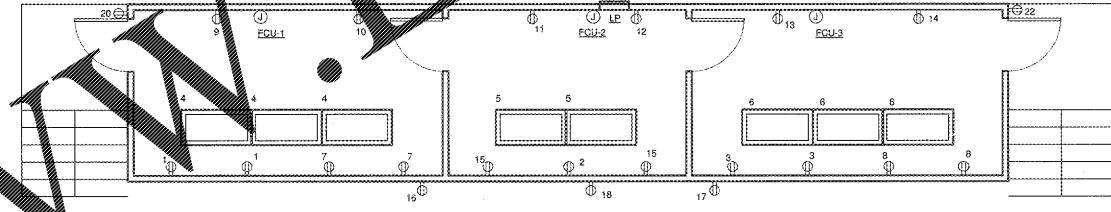
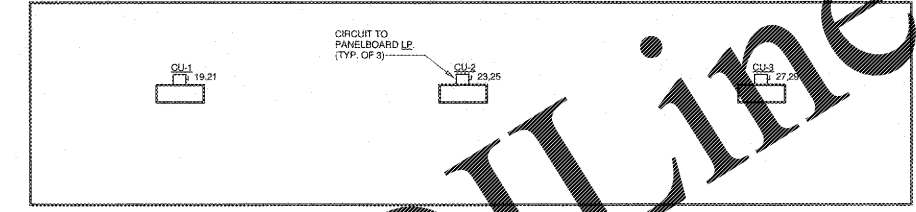
ELECTRICAL ABBREVIATIONS	
AFF	ABOVE FINISHED FLOOR
AFG	ABOVE FINISHED GRADE
EC	EMPTY CONDUIT. PROVIDE PULL CORD.
GFL GFCI	GROUND FAULT CIRCUIT INTERRUPTER
NF	NON-FUSED
WP	WEATHERPROOF DEVICE OR COVER - NEMA 3R

DP											
LOCATION: SUPPLY FROM: MOUNTING: Surface ENCLOSURE: Type 1			VOLTS: 120/208 WYE PHASES: 3 WIRES: 4			A.I.C. RATING: 10,000 MAINS TYPE: MCB MAINS RATING: 175 A BUS RATING: 200 A					
#	CIRCUIT DESCRIPTION	TRIP	POLES	A	B	C	POLES	TRIP	CIRCUIT DESCRIPTION	#	
1	LP	100 A	2	4295	360		1	20 A	RECEPTACLE	2	
2					4677	180	1	20 A	SPRINKLER CONTROLS	3	
3	EXISTING CIRCUIT	150 A	3	0	0	0	1	20 A	SPARE	4	
4					0	0	1	20 A	SPARE	5	
5					0	0	1	20 A	SPARE	6	
6					0	0	1	20 A	SPARE	7	
7					0	0	1	20 A	SPARE	8	
8					0	0	1	20 A	SPARE	9	
9					0	0	1	20 A	SPARE	10	
10					0	0	1	20 A	SPARE	11	
11	SPACE ONLY				0	0	1	20 A	SPACE ONLY	12	
12	SPACE ONLY				0	0	1	20 A	SPACE ONLY	13	
13	SPACE ONLY				0	0	1	20 A	SPACE ONLY	14	
14	SPACE ONLY				0	0	1	20 A	SPACE ONLY	15	
15	SPACE ONLY				0	0	1	20 A	SPACE ONLY	16	
16	SPACE ONLY				0	0	1	20 A	SPACE ONLY	17	
17	SPACE ONLY				0	0	1	20 A	SPACE ONLY	18	
18	SPACE ONLY				0	0	1	20 A	SPACE ONLY	19	
19	SPACE ONLY				0	0	1	20 A	SPACE ONLY	20	
20	SPACE ONLY				0	0	1	20 A	SPACE ONLY	21	
21	SPACE ONLY				0	0	1	20 A	SPACE ONLY	22	
22	SPACE ONLY				0	0	1	20 A	SPACE ONLY	23	
23	SPACE ONLY				0	0	1	20 A	SPACE ONLY	24	
TOTAL CONNECTED LOAD:		4752 VA		4857 VA		0 VA					
TOTAL CONNECTED AMPS:		48 A		47 A		0 A					
LOAD CLASSIFICATION			CONNECTED LOAD	DEMAND FACTOR	ESTIMATED DEMAND	PANEL TOTALS					
HVAC			4800 VA	100.00%	4800 VA	TOTAL CONNECTED LOAD:	4800 VA	TOTAL ESTIMATED DEMAND:	4800 VA		
Receptacle			180 VA	100.00%	180 VA	TOTAL ESTIMATED DEMAND:	9980 VA				
Lighting			312 VA	125.00%	390 VA	TOTAL CONNECTED AMPS:	27 A	CALCULATED DEMAND AMPS:	27 A		

LP											
LOCATION: SUPPLY FROM: DP ENCLOSURE: Recessed			VOLTS: 120/240 SINGLE PHASES: 1 WIRES: 3			A.I.C. RATING: 10,000 MAINS TYPE: MCB MAINS RATING: 100 A BUS RATING: 100 A					
#	CIRCUIT DESCRIPTION	TRIP	POLES	A	B	C	POLES	TRIP	CIRCUIT DESCRIPTION	#	
1	REC-FRONT WALL	20 A	1	350	180		1	20 A	REC-FRONT WALL	2	
2	REC-FRONT WALL	20 A	1	70	117		1	20 A	LED LIGHTS	3	
3	LED LIGHTS	20 A	1	70	117		1	20 A	LED LIGHTS	4	
4	REC-FRONT WALL	20 A	1	350	300		1	20 A	REC-FRONT WALL	5	
5	REC-FRONT WALL	20 A	1	180	180		1	20 A	REC-FRONT WALL	6	
6	REC-FRONT WALL	20 A	1	180	180		1	20 A	REC-FRONT WALL	7	
7	REC-FRONT WALL	20 A	1	180	180		1	20 A	REC-FRONT WALL	8	
8	REC-FRONT WALL	20 A	1	180	180		1	20 A	REC-FRONT WALL	9	
9	REC-FRONT WALL	20 A	1	180	180		1	20 A	REC-FRONT WALL	10	
10	REC-FRONT WALL	20 A	1	180	180		1	20 A	REC-FRONT WALL	11	
11	REC-FRONT WALL	20 A	1	180	180		1	20 A	REC-FRONT WALL	12	
12	REC-FRONT WALL	20 A	1	180	180		1	20 A	REC-FRONT WALL	13	
13	REC-FRONT WALL	20 A	1	180	180		1	20 A	REC-FRONT WALL	14	
14	REC-FRONT WALL	20 A	1	180	180		1	20 A	REC-FRONT WALL	15	
15	REC-FRONT WALL	20 A	1	180	180		1	20 A	REC-FRONT WALL	16	
16	REC-FRONT WALL	20 A	1	180	180		1	20 A	REC-FRONT WALL	17	
17	REC-FRONT WALL	20 A	1	180	180		1	20 A	REC-FRONT WALL	18	
18	REC-FRONT WALL	20 A	1	180	180		1	20 A	REC-FRONT WALL	19	
19	REC-FRONT WALL	20 A	1	180	180		1	20 A	REC-FRONT WALL	20	
20	REC-FRONT WALL	20 A	1	180	180		1	20 A	REC-FRONT WALL	21	
21	REC-FRONT WALL	20 A	1	180	180		1	20 A	REC-FRONT WALL	22	
22	REC-FRONT WALL	20 A	1	180	180		1	20 A	REC-FRONT WALL	23	
23	REC-FRONT WALL	20 A	1	180	180		1	20 A	REC-FRONT WALL	24	
24	REC-FRONT WALL	20 A	1	180	180		1	20 A	REC-FRONT WALL	25	
25	REC-FRONT WALL	20 A	1	180	180		1	20 A	REC-FRONT WALL	26	
26	REC-FRONT WALL	20 A	1	180	180		1	20 A	REC-FRONT WALL	27	
27	REC-FRONT WALL	20 A	1	180	180		1	20 A	REC-FRONT WALL	28	
28	REC-FRONT WALL	20 A	1	180	180		1	20 A	REC-FRONT WALL	29	
29	REC-FRONT WALL	20 A	1	180	180		1	20 A	REC-FRONT WALL	30	
TOTAL CONNECTED LOAD:		4395 VA		4677 VA		0 VA					
TOTAL CONNECTED AMPS:		37 A		39 A		0 A					
LOAD CLASSIFICATION			CONNECTED LOAD	DEMAND FACTOR	ESTIMATED DEMAND	PANEL TOTALS					
HVAC			4800 VA	100.00%	4800 VA	TOTAL CONNECTED LOAD:	4800 VA	TOTAL ESTIMATED DEMAND:	4800 VA		
Receptacle			3960 VA	100.00%	3960 VA	TOTAL ESTIMATED DEMAND:	9150 VA				
Lighting			312 VA	125.00%	390 VA	TOTAL CONNECTED AMPS:	38 A	CALCULATED DEMAND AMPS:	38 A		



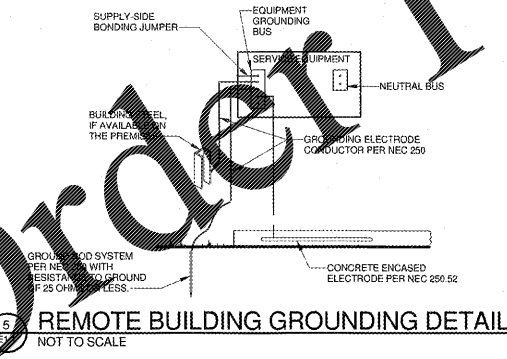
- ### GENERAL NOTES
- ELECTRICAL FLOOR PLANS SHOWN ARE FOR REFERENCE ONLY. PRESSBOX COMES PREWIRED EXCEPT AS INDICATED. SEE DRAWINGS FROM PRESSBOX MANUFACTURER.
 - ELECTRICAL PANELBOARD IS PART OF PREASSEMBLED PRESSBOX. PROVIDE NEW FEEDER TO PANELBOARD. SEE DRAWINGS.
 - PANELBOARD DP, EXISTING TRANSFORMER, AND EXISTING DISCONNECT ARE LOCATED IN BUILDING UNDER GRANDSTAND. VERIFY EXACT LOCATION IN FIELD.



MECHANICAL EQUIPMENT SCHEDULE										
MARK	VOLTAGE	PHASE	HP	KW	FLA	MCA	MOCP	DISCONNECT	BRANCH CIRCUIT	NOTES
CU-1	230	1		1.6				30/2/NF/1	2412-#12G-#34FC	1
CU-2	230	1		1.6				30/2/NF/1	2412-#12G-#34FC	1
CU-3	230	1		1.6				30/2/NF/1	2412-#12G-#34FC	1

- ### MECHANICAL EQUIPMENT SCHEDULE NOTES
- CIRCUITS FOR POWER, CONTROL, ETC. THROUGH THE ROOF SHALL BE INSIDE THE UNIT CURB.
 - THE FCUs ARE FED FROM THE RESPECTIVE CUS. PROVIDE 1" C. BETWEEN THE RECEPTIVE UNITS.

- ### MECHANICAL EQUIPMENT SCHEDULE GENERAL NOTES
- VERIFY ELECTRICAL REQUIREMENTS OF PURCHASED UNITS PRIOR TO ROUGH-IN.
 - PROVIDE DISCONNECT SWITCH INDICATED.
 - EXTERIOR FLEXIBLE CONDUIT SHALL BE "SEALTITE" OR EQUAL.



- ### ALTERNATE #1 PA SYSTEM REQUIREMENTS
- PROVIDE NEW PA SYSTEM FOR FOOTBALL FIELD.
 - TECHNOMAD IPA "TURN-KEY" OUTDOOR INSTALLATION PA SYSTEM
 - DENON DN-3002 MEDIA PLAYER WITH BLUETOOTH AND AM/FM TUNER
 - SHURE ULXD4-H50 QUAD CHANNEL DIGITAL WIRELESS RECEIVER
 - SHURE ULXD2S68-H50 HANDHELD TRANSMITTER WITH SM58 MICROPHONE
 - SHURE UM874 ACTIVE DIRECTIONAL ANTENNA
 - SHURE MX12 1" MICROPLEX CARDIOD CONDENSER MICROPHONE
 - RADIO DESIGN LABS FP-MPA DUAL MICROPHONE PHANTOM ADAPTER
 - CONTRACTOR / VENDOR SHALL COORDINATE INSTALLATION OF SPEAKERS WITH PRESSBOX MANUFACTURER.
 - CONTRACTOR / VENDOR SHALL VERIFY EXACT FIELD CONDITIONS AND MAKE ADJUSTMENTS IN EQUIPMENT AS NECESSARY.
 - PROVIDE ALL MOUNTING HARDWARE, CABLES, RACKS, ETC. FOR A COMPLETE INSTALLATION.
 - MAKE ALL NECESSARY POWER CONNECTIONS.



ROBERTSON LOJA ROOF ARCHITECTS & ENGINEERS
3480 Preston Ridge Road, Suite 275, Alpharetta, Georgia 30005
770-674-8800 Fax 770-674-8745

Model High School Press Box
Rome, Georgia
Floyd County Schools
600 Riverside Pkwy NE Rome, Georgia 30161

ELECTRICAL PLAN

DATE: 09-07-17
PROJECT NUMBER: 17-167
SHEET NUMBER: **E1.1**