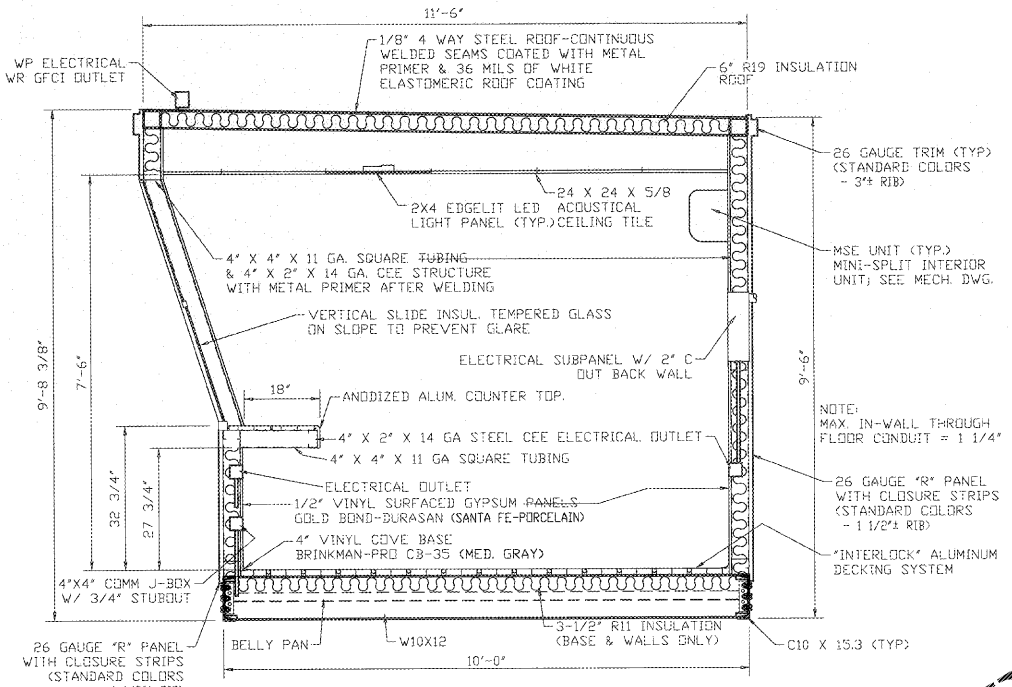
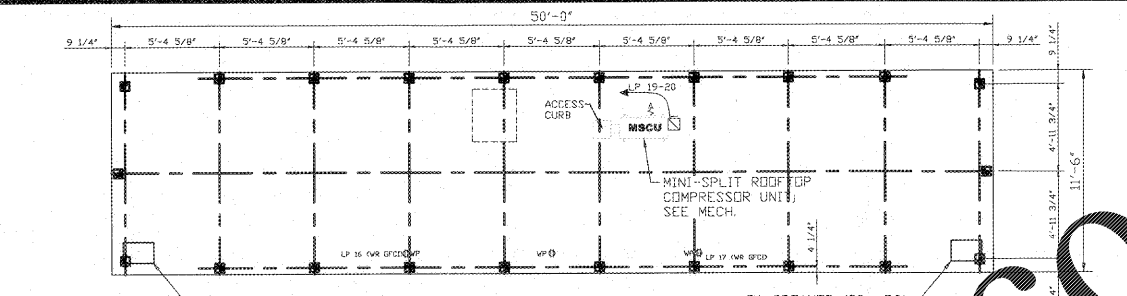


1 ENLARGED BLEACHER PLAN  
SCALE: 3/32"=1'-0"  
NORTH

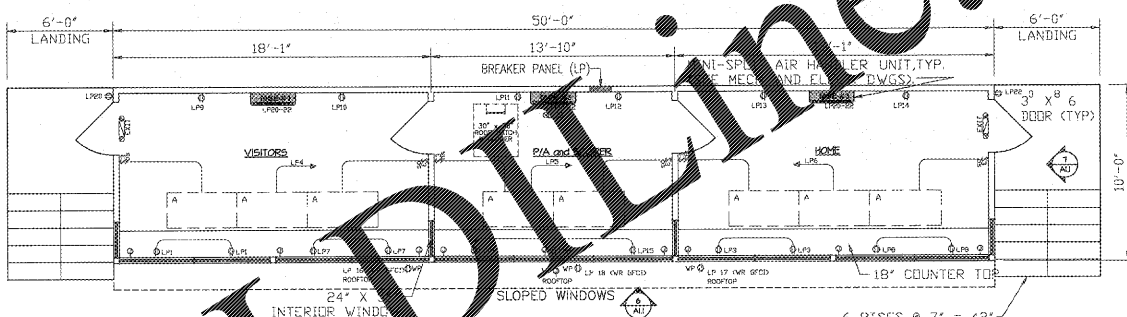
**DEMOLITION NOTE:**  
EXISTING APPROXIMATELY 45' X 8'  
PRESSBOX AND ASSOCIATED  
STRUCTURAL SUPPORT AND  
FOUNDATIONS TO BE DEMOLISHED IN  
CONSTRUCTION CONTRACT. ALL  
ELECTRICAL CONNECTIONS TO BE  
DISCONNECTED AND REMOVED BY  
ELECTRICAL CONTRACTOR PRIOR TO  
DEMOLITION.



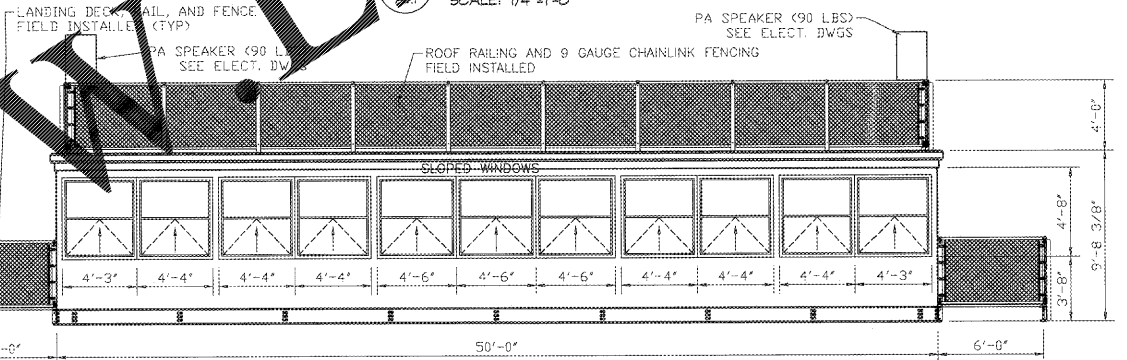
2 PRESSBOX SECTION  
SCALE: 3/4"=1'-0"



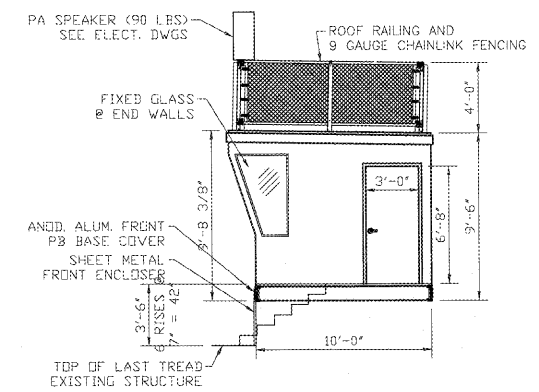
4 PRESSBOX ROOF RAIL LAYOUT PLAN  
SCALE: 1/4"=1'-0"



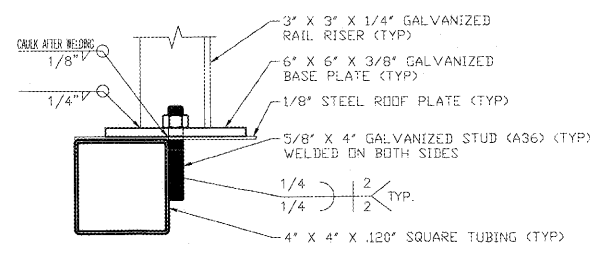
5 PRESSBOX FLOOR PLAN  
SCALE: 1/4"=1'-0"



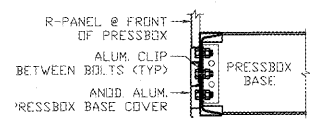
6 PRESSBOX FRONT ELEVATION  
SCALE: 1/4"=1'-0"



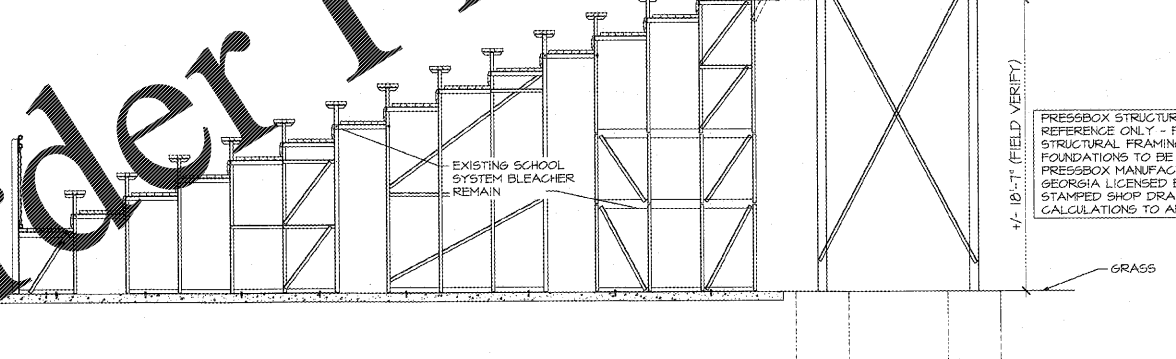
7 PRESSBOX SIDE ELEVATION  
SCALE: 1/4"=1'-0"



8 ROOF RAIL ATTACHMENT DETAIL  
SCALE: N.T.S.



9 PRESSBOX BASE TRIM DETAIL  
SCALE: N.T.S.



3 BLEACHER/PRESSBOX SECTION  
SCALE: 3/8"=1'-0"

PRESSBOX TO BE DESIGNED FULLY  
WIRED WITH POWER, LIGHTS AND  
PANEL. ELECTRICAL SERVICE TO BE  
BY ELECTRICAL CONTRACTOR.

PRESSBOX STRUCTURE SHOWN FOR  
REFERENCE ONLY - PRESSBOX  
STRUCTURAL FRAMING SYSTEM AND  
FOUNDATIONS TO BE DESIGNED BY  
PRESSBOX MANUFACTURER STATE OF  
GEORGIA LICENSED ENGINEER. SUBMIT  
STAMPED SHOP DRAWINGS AND  
CALCULATIONS TO ARCHITECT.

WWW.LDLINE.COM

**ROBERT LOJA ROOF ARCHITECTS ENGINEERS**  
3460 Preston Ridge Road · Suwanee, Georgia 30005  
770-674-2600 · Fax 678-313-1111



**Model High School Press Box**  
Rome, Georgia  
for  
**Floyd County Schools**  
600 Riverside Pkwy NE Rome, Georgia 30161

NO.	REVISIONS

**PRESSBOX PLANS, SECTIONS, ELEVATIONS, AND DETAILS**

DATE: 09-07-17  
PROJECT NUMBER: 17-167  
SHEET NUMBER: A1.1