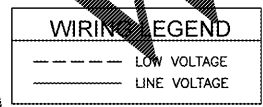
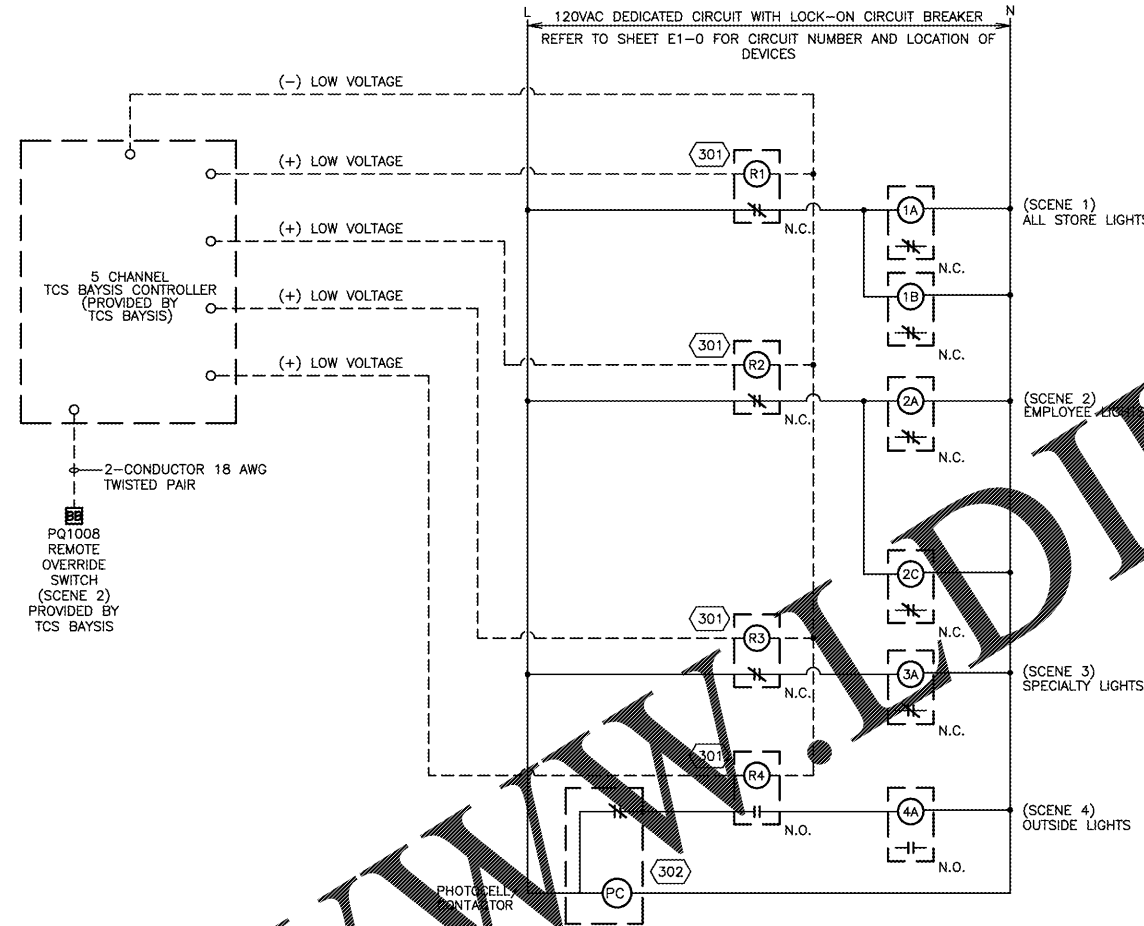


LIGHTING CONTACTOR ENCLOSURE LABELING

NOT TO SCALE  
305



LIGHTING CONTROL DIAGRAM

LIGHTING CONTROL CODED NOTES

- 301 RELAYS PROVIDED BY TCS BAYSIS.
- 302 TORK MODEL #2001 PHOTOCCELL, 120VAC RATED N.C. CONTACT. INSTALL PHOTOCCELL FACING NORTH AND AWAY FROM ANY LIGHTING SOURCE.

SEQUENCE OF OPERATION

**SCENE 1 - ALL STORE LIGHTS TIMECLOCK**  
 LIGHTS ON (10AM - 9PM ADJUSTABLE): TIMECLOCK NORMALLY CLOSED CONTACT OPENS AND DE-ENERGIZES SCENE 1 CONTACTOR(S). CONTACTOR(S) NORMALLY CLOSED CONTACTS CLOSE AND ENERGIZE LIGHTS.  
 LIGHTS OFF (9PM - 10AM ADJUSTABLE): TIMECLOCK NORMALLY CLOSED CONTACT CLOSSES AND ENERGIZES SCENE 1 CONTACTOR(S). CONTACTOR(S) NORMALLY CLOSED CONTACTS OPEN AND DE-ENERGIZE LIGHTS.

**SCENE 2 - EMPLOYEE LIGHTS TIMECLOCK**  
 LIGHTS ON (8AM - 11PM ADJUSTABLE): TIMECLOCK NORMALLY CLOSED CONTACT OPENS AND DE-ENERGIZES SCENE 2 CONTACTOR(S). CONTACTOR(S) NORMALLY CLOSED CONTACTS CLOSE AND ENERGIZE LIGHTS.  
 LIGHTS OFF (11PM - 8AM ADJUSTABLE): TIMECLOCK NORMALLY CLOSED CONTACT CLOSSES AND ENERGIZES SCENE 2 CONTACTOR(S). CONTACTOR(S) NORMALLY CLOSED CONTACTS OPEN AND DE-ENERGIZE LIGHTS.  
 BYPASS BUTTON FOR SCENE 2  
 BYPASS BUTTON ENABLED: BYPASS BUTTON CLOSSES AND ENERGIZES BYPASS RELAY. RELAY NORMALLY CLOSED CONTACT OPENS AND DE-ENERGIZES SCENE 2 CONTACTOR(S) NORMALLY CLOSED CONTACTS CLOSSES AND ENERGIZES LIGHTS.

**SCENE 3 - SPECIALTY LIGHTS TIMECLOCK**  
 LIGHTS ON (8AM - 11PM ADJUSTABLE): TIMECLOCK NORMALLY CLOSED CONTACT OPENS AND DE-ENERGIZES SCENE 3 CONTACTOR(S). CONTACTOR(S) NORMALLY CLOSED CONTACTS CLOSE AND ENERGIZE LIGHTS.  
 LIGHTS OFF (11PM - 8AM ADJUSTABLE): TIMECLOCK NORMALLY CLOSED CONTACT CLOSSES AND ENERGIZES SCENE 3 CONTACTOR(S). CONTACTOR(S) NORMALLY CLOSED CONTACTS OPEN AND DE-ENERGIZE LIGHTS.

**SCENE 4 - OUTSIDE LIGHTS TIMECLOCK**  
 LIGHTS ON OR OFF (6AM - MIDNIGHT ADJUSTABLE):  
 LIGHTS OFF (HIGH AMBIENT LIGHT OUTSIDE): TIMECLOCK NORMALLY OPEN CONTACT CLOSED BASED ON ASTRONOMICAL TIME. PHOTO CELL NORMALLY CLOSED CONTACT OPEN. SCENE 4 CONTACTOR(S) DE-ENERGIZED. CONTACTOR(S) NORMALLY OPEN CONTACTS OPEN AND DE-ENERGIZE LIGHTS.  
 LIGHTS ON (LOW AMBIENT LIGHT OUTSIDE): TIMECLOCK NORMALLY OPEN CONTACT CLOSED BASED ON ASTRONOMICAL TIME. PHOTO CELL NORMALLY CLOSED CONTACT CLOSED. SCENE 4 CONTACTOR(S) ENERGIZED. CONTACTOR(S) NORMALLY OPEN CONTACTS CLOSE AND ENERGIZE LIGHTS.  
 LIGHTS OFF (MIDNIGHT - 6AM ADJUSTABLE):  
 TIMECLOCK NORMALLY OPEN CONTACT OPEN. SCENE 4 CONTACTOR(S) DE-ENERGIZED. CONTACTOR(S) NORMALLY OPEN CONTACTS OPEN AND DE-ENERGIZE LIGHTS.

NOT TO SCALE  
300

EXTERNAL CONTACTOR LABEL	SCENE	MANUFACTURER MODEL	TYPE	CONTACT COIL VOLTAGE	CONTACT AMPERE RATING	NO. OF POLES		NEMA TYPE ENCLOSURE	LIGHT FIXTURE VOLTAGE	CIRCUITS CONTROLLED
						N.O.	N.C.			
1A	1 ALL STORE LIGHTS	GENERAL ELECTRIC CR463L20-AJA	ELEC ENERGIZED ELEC HELD	120	30		8	NEMA 1	120	F-1,5,9,13,17,19,21,23
1B	1 ALL STORE LIGHTS	GENERAL ELECTRIC CR463L20-AJA	ELEC ENERGIZED ELEC HELD	120	30		8	NEMA 1	120	F-31,33,39,41,43
2A	2 EMPLOYEE LIGHTS	GENERAL ELECTRIC CR463L20-AJA	ELEC ENERGIZED ELEC HELD	120	30		8	NEMA 1	120	F-3,7,11,15,45,47
2B	2 EMPLOYEE LIGHTS	GENERAL ELECTRIC CR463L20-AJA	ELEC ENERGIZED ELEC HELD	120	30		4	NEMA 1	120	F-51,53
2C	2 EMPLOYEE LIGHTS	GENERAL ELECTRIC CR463L20-AJA	ELEC ENERGIZED ELEC HELD	120	30		4	NEMA 1	277	E-1,4
3A	3 SPECIALTY LIGHTS	GENERAL ELECTRIC CR463L20-AJA	ELEC ENERGIZED ELEC HELD	120	30		6	NEMA 1	120	B-55,57,61,63
4A	4 OUTSIDE LIGHTS	GENERAL ELECTRIC CR463L20-AJA	ELEC ENERGIZED ELEC HELD	120	20	4		NEMA 1	120	F-82,84

REMARKS:  
 1. THE ELECTRICALLY HELD CONTACTOR SPECIFIED, (MODEL NUMBER, CR463L20-AJA), USES A G.E. 2-POLE CONTACTOR, (MODEL NUMBER CR460XP32,) FOR A TOTAL NUMBER OF POLES SEE NO. OF POLES COLUMN IN CONTACTOR SCHEDULE

REMODEL STORE



MAP INC.  
 STORE DEVELOPMENT  
 FOLSOM STREET  
 SAN FRANCISCO, CA 94105

REPS. I.D.: 00000131847  
 STORE NUMBER: 5724  
 STORE LOCATION: BUCKHEAD STATION  
 1 BUCKHEAD LOOP NE  
 ATLANTA, GA 30326

DESIGN TYPE: P3  
 GENERATION: 18Q12  
 PROTOTYPE DATE: 08/31/17  
 OPENING: 2018

CONSULTANT INFO.

M-Engineering  
 750 Brookside Blvd.  
 Westerville, Ohio 43081  
 phone: 614.539.4533  
 fax: 614.539.2222  
 www.mengineering-us.com

PROFESSIONAL STAMP:

ARCHITECT INFO.

ARCHITECT OF RECORD:  
 BOYD W. RAU  
 6709 ANTOCH PLAZA  
 SUITE 300  
 MERRIMAN, AS 66204  
 www.brrarch.com  
 TEL: 913-262-9095  
 FAX: 913-262-9044

ISSUE TYPE:  
 BID/PERMIT 01/05/18

REVISIONS:

DRAWN BY: AMH  
 A/E JOB NUMBER: 65013029/1742070

TITLE SHEET:  
 LIGHTING CONTROL  
 DETAILS

SHEET NUMBER:  
 E9-3

Order Plans