

EAS CODED NOTES (S10-2 ONLY)

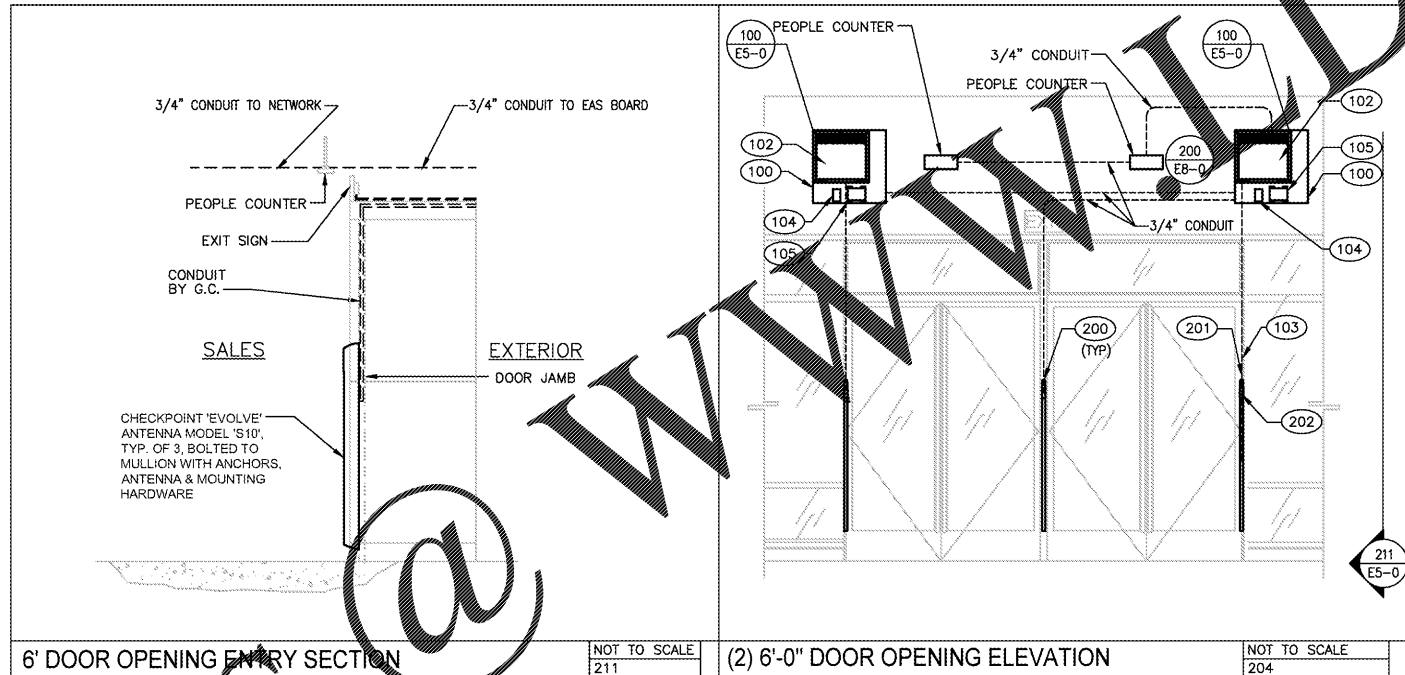
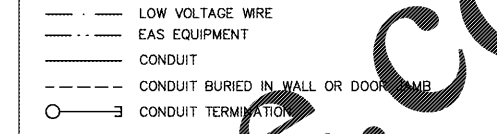
- 100 3/4" THICK, GRADE A PLYWOOD EAS BACKBOARD. SIZE AS INDICATED, SEE ARCH DRAWINGS FOR LOCATION.
- 102 EVOLVE S10 ELECTRONICS ENCLOSURE (E.E.). (MUST BE WITHIN 30 LINEAR FEET OF THE FURTHEST F10 ANTENNA. ONE (1) E.E. PER TWO (2) F10 ANTENNAS.)
- 103 EAS - S10 CABLE ASSEMBLY #1 (MAX 30 LINEAR FT FROM THE ELECTRONICS UNIT).
- 104 J-BOX FOR CONNECTION TO SECONDARY BACKBOARD (IF REQUIRED.) PROVIDE 3/4" CONDUIT WITH PULLSTRING BACK TO SECONDARY BACKBOARD.
- 105 POWER SUPPLIE(S). VERIFY EXACT LOCATION WITH G.C. PRIOR TO ROUGH IN.

- 200 EVOLVE S10 ANTENNA. MOUNTED TO DOOR FRAME / MULLION.
- 201 3/4" CONDUIT WITH (2) PULLSTRINGS DOWN THROUGH PORTAL WALL TO 56" A.F.F. CAVITY.
- 202 1" DIAMETER HOLE AT 56" A.F.F. ROUTE CONDUIT (201) TO THE HOLES ON THE DOOR FRAME / MULLION. CONTRACTOR TO VERIFY EXACT OPENING LOCATIONS WITH EAS VENDOR.

EAS GENERAL NOTES

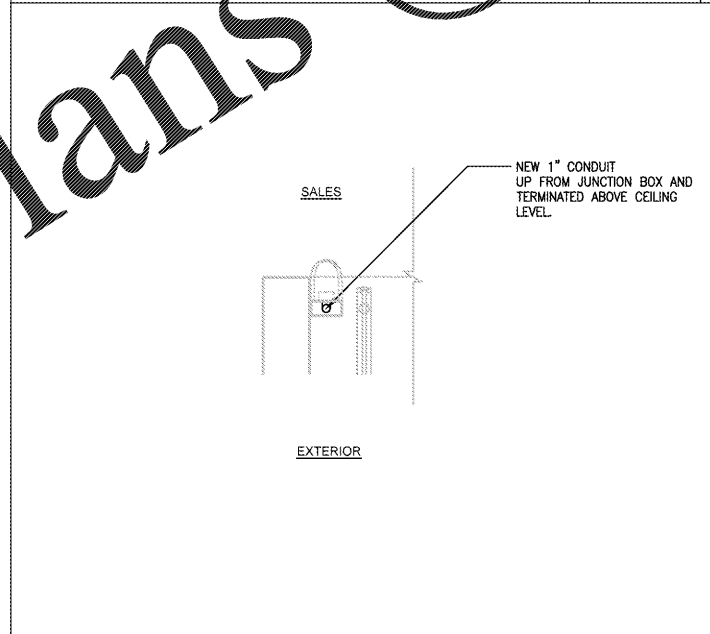
1. CONTRACTOR SHALL PROVIDE ALL ABOVE SLAB CONDUIT, PULL WIRE, JUNCTION BOXES FOR EAS SYSTEM.
2. ALL LOW VOLTAGE WIRING AND EAS EQUIPMENT TO BE INSTALLED, BY VENDOR.
3. PROVIDE TEMPORARY COVERPLATE FOR ALL J-BOXES.

EAS WIRING LEGEND

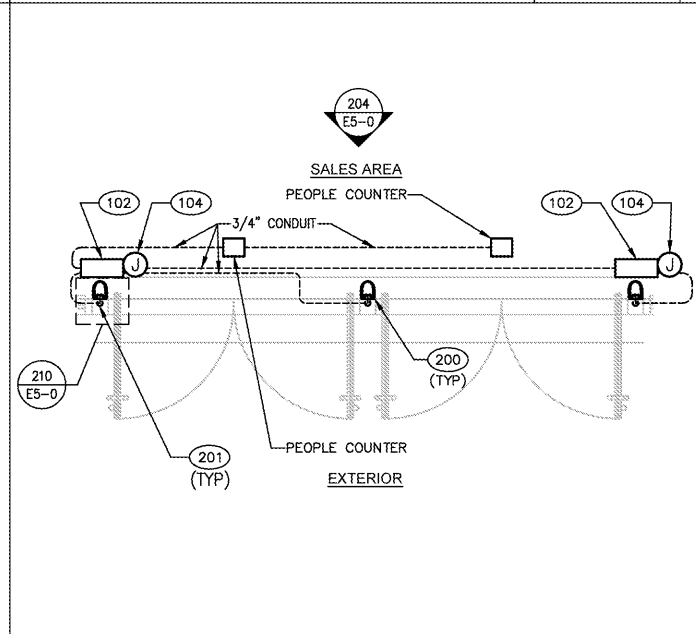


6' DOOR OPENING ENTRY SECTION NOT TO SCALE 211

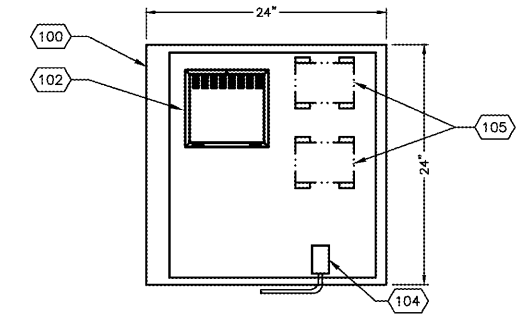
(2) 6'-0" DOOR OPENING ELEVATION NOT TO SCALE 204



DOOR JAMB DETAIL NOT TO SCALE 210



(2) 6'-0" DOOR OPENING NOT TO SCALE 203



EAS SYSTEM GENERAL NOTES

1. LOCATE "D-BLAZE" FIRE RETARDANT TREATED PLYWOOD BACKBOARD AT 12'-6" A.F.F. BACKBOARD NOT TO EXCEED 15'-0" A.F.F.
2. ACCESS PANEL TO BE WITHIN 2'-0" MAX. OF EAS BACKBOARD. COORDINATE EXACT LOCATION WITH G.C. PRIOR TO ROUGH-IN.
3. BACKBOARD TO HAVE A FLAMESPREAD OR SMOKE RATING OF 25 OR LESS.

EAS SYSTEM CODED NOTES

- 100 3/4" THICK, GRADE A PLYWOOD EAS BACKBOARD. SIZE AS INDICATED, SEE ARCH DRAWINGS FOR LOCATION.
- 102 S10 ELECTRONICS ENCLOSURE
- 104 PROVIDE J-BOX FOR CONNECTION TO SECONDARY BACKBOARD (IF REQUIRED.) MOUNT J-BOX ON PLYWOOD BOARD. PROVIDE 3/4" CONDUIT WITH PULLSTRING TO SECONDARY BACKBOARD.
- 105 POWER SUPPLIES.

EAS BACKBOARD DETAIL NOT TO SCALE 100

REMODEL STORE



REP. INC.
STORE DEVELOPMENT
FOLSOM STREET
SAN FRANCISCO, CA 94105

REPS. I.D.: 00000131847
STORE NUMBER: 5724
STORE LOCATION: BUCKHEAD STATION
1 BUCKHEAD LOOP NE
ATLANTA, GA 30326

DESIGN TYPE: P3
GENERATION: 18012
PROTOTYPE DATE: 08/31/17
OPENING: 2018

CONSULTANT INFO.

M-Engineering
750 Brookside Blvd.
Westerville, Ohio 43081
Phone: 614-899-4039
Fax: 614-899-2222
www.mengineering.us.com

PROFESSIONAL STAMP:

ARCHITECT INFO:

brr
ARCHITECT OF RECORD:
BOYD W. BAU
6700 ANTIOCH PLAZA
SUITE 300
MERRILL, AS 66204
www.brrarch.com
TEL: 913-262-9095
FAX: 913-262-9044

ISSUE TYPE:

BID/PERMIT 01/05/18

REVISIONS:

DRAWN BY: AMH
AVE JOB NUMBER: 65013029/1742070

TITLE SHEET:
EAS DETAILS

SHEET NUMBER:

E5-0

Order Plans @

WWW.DILine.com