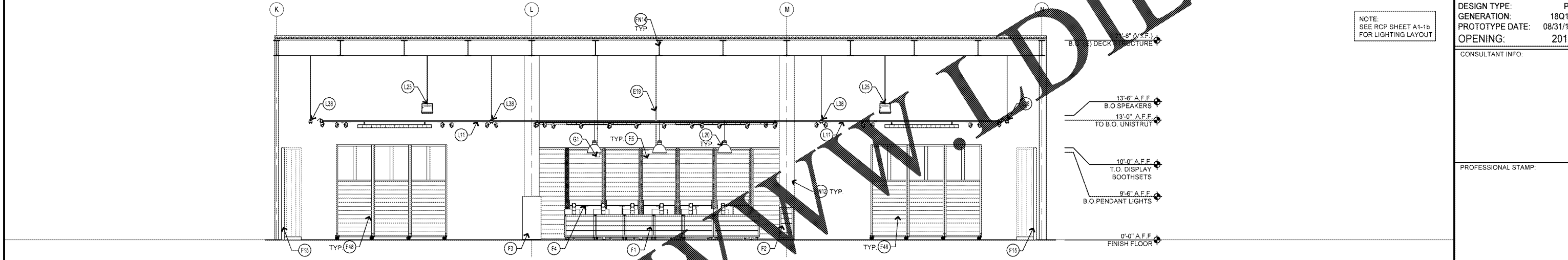
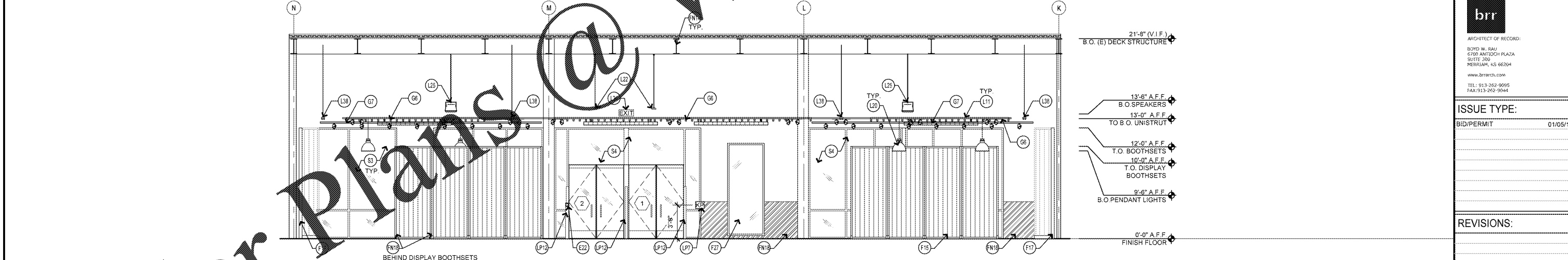


INTERIOR ELEVATION (BACK WALL) SCALE: 3/16" = 1'-0" 3



INTERIOR ELEVATION (CASHWRAP) SCALE: 3/16" = 1'-0" 2



INTERIOR ELEVATION (FRONT WALL) SCALE: 3/16" = 1'-0" 1

KEY	DESCRIPTION	DET/SHT	KEY	DESCRIPTION	DET/SHT	KEY	DESCRIPTION	DET/SHT	KEY	DESCRIPTION	DET/SHT	KEY	DESCRIPTION	DET/SHT	KEY	DESCRIPTION	DET/SHT
SHELL / CONSTRUCTION			FINISHES			GRAPHICS / SIGNAGE			LIGHTING			MEP / LOSS PREVENTION					
(S3)	(E) STOREFRONT SYSTEM	6 / A6-1	(F5)	MOBILE BACKWRAP UNIT	6 / A6-1	(F30)	STAGE FIXTURE FOR REFERENCE ONLY	1 / A4-2	(L20)	WHITE PENDANT FIXTURE, B.O. FIXTURE AT 9'-6" A.F.F. MOUNT TO LIGHT TRACK	SEE ELEC	(L22)	BLUE PENDANT FIXTURE, B.O. FIXTURE AT 9'-6" A.F.F. MOUNT TO LIGHT TRACK	SEE ELEC	(L24)	(N) ILLUMINATED EXIT SIGN	SEE ELEC
(S4)	(N) STOREFRONT SYSTEM MATCH EXISTING CONDITIONS AND FINISHES	2 / A6-1	(F17)	10'-0" H OPEN BASE "L" BOOTHSET FIXTURE	2 / A8-0	(F48)	SHOP DIVIDER FIXTURE	4 / A8-0	(L25)	MUSIC SPEAKER, VENDOR TO MOUNT B.O. SPEAKER AT 13'-6" A.F.F. GC TO PROVIDE & INSTALL UNISTRUT	SEE ELEC & 8 / A4-1	(L26)	4'-0" LONG EMERGENCY FLUORESCENT STRIP FIXTURE MOUNT TO UNISTRUT AT 13'-6" A.F.F.	SEE ELEC	(L27)	TRANSFER GRILLS, PAINT TO MATCH WALL	SEE MECH
(C16)	MIRROR, 24'-0" X 9'-0" CASED, FINISHING PAINTED [P9]	CO-2	(F19)	10'-0" H "L" BOOTHSET FIXTURE	2 / A8-0	(F50)	PRICE CHECKER	1 / A8-2	(L28)	UNISTRUT GRID MOUNTED AT 13'-0" A.F.F. TO BOTTOM SUPPORTS AT 8" MAX. O.C.	SEE ELEC & A1-1a & b	(L29)	MECHANICAL DOCT WORK	SEE MECH	(L29)	KEYPAD MOUNTED @ 44" MIN. / 48" MAX. A.F.F.	SEE ELEC
FIXTURES			FINISHES			GRAPHICS / SIGNAGE			LIGHTING			MEP / LOSS PREVENTION					
(F1)	MOBILE CASHWRAP UNITS	A8-0	(F17)	12'-0" H "L" BOOTHSET FIXTURE	2 / A8-0	(F51)	STRUCTURAL COLUMN TO BE PAINTED	1 / A4-2	(L5)	(E) ILLUMINATED EXIT SIGN	SEE ELEC	(L30)	BACKWRAP CONDUIT TO PROVIDE POWER FOR ALL FIXTURES AT CASHWRAP, VISUAL DISPLAY AREAS, & PROJECTOR	SEE ELEC	(L31)	EAS FIN LOCATION	SEE ELEC
(F2)	FAST LANE	5 / A6-1	(F19)	MIRROR END PANEL	1 / A8-0	(F52)	PAINT EXPOSED ROOF STRUCTURE / DECK / DUCTWORK	CO-3	(L11)	UNISTRUT GRID MOUNTED AT 13'-0" A.F.F. TO BOTTOM SUPPORTS AT 8" MAX. O.C.	SEE ELEC & A1-1a & b	(L32)	ADA PUSH BUTTON DOOR OPERATOR BY LANDLORD, MOUNTED TO BOLLARD WITH T.O. BUTTON AT 48" MAX.	SEE ELEC	(L33)	KEYPAD MOUNTED @ 44" MIN. / 48" MAX. A.F.F.	SEE ELEC
(F3)	COOLER AND COOLER SHROUD	7 / A8-0	(F21)	10'-0" H OPEN BASE "L" BOOTHSET FIXTURE	8 / A8-0	(F53)	EXPOSED WALLS TO RECEIVE MIN. BASE [S2]	1 / A10-1	(L12)	UNISTRUT GRID MOUNTED AT 13'-0" A.F.F. TO BOTTOM SUPPORTS AT 8" MAX. O.C.	SEE ELEC & A1-1a & b	(L34)	KEYPAD MOUNTED @ 44" MIN. / 48" MAX. A.F.F.	SEE ELEC	(L35)	KEYPAD MOUNTED @ 44" MIN. / 48" MAX. A.F.F.	SEE ELEC
			(F22)	10'-0" H "T" MIRROR END PANEL MOUNTED TO WALL @ 4" A.F.F. TO BOTTOM RAIL B.C. TO PROVIDE BLOCKING IN WALL	7 / A8-0	(F54)	GALVANIZED WAINSCOT [S2] TO 4'-0" A.F.F. EXTEND 12" BEHIND BOOTHSETS	1 / A10-1	(L13)	UNISTRUT GRID MOUNTED AT 13'-0" A.F.F. TO BOTTOM SUPPORTS AT 8" MAX. O.C.	SEE ELEC & A1-1a & b	(L36)	KEYPAD MOUNTED @ 44" MIN. / 48" MAX. A.F.F.	SEE ELEC	(L37)	KEYPAD MOUNTED @ 44" MIN. / 48" MAX. A.F.F.	SEE ELEC

KEY NOTES

REMODEL STORE
OLD NAVY
 CAP, INC.
 STORE DEVELOPMENT
 FOLSOM STREET
 SAN FRANCISCO, CA 94105
 REPS. I.D.: 00000131847
 STORE NUMBER: 5724
 STORE LOCATION: BUCKHEAD STATION
 1 BUCKHEAD LOOP NE
 ATLANTA, GA 30326

DESIGN TYPE: P3
 GENERATION: 18012
 PROTOTYPE DATE: 08/31/17
 OPENING: 2018

CONSULTANT INFO.
 PROFESSIONAL STAMP:

ARCHITECT INFO.
brr
 ARCHITECT OF RECORD:
 BOYD W. BAU
 6700 ANTIPOCH PLAZA
 SUITE 300
 MEMPHIS, TN 38117
 www.brrarch.com
 TEL: 913-263-9095
 FAX: 913-262-9044

ISSUE TYPE:
 BID/PERMIT 01/05/18

REVISIONS:

DRAWN BY: CAR
 AVE JOB NUMBER: 65013029

TITLE SHEET:
 INTERIOR ELEVATIONS
 SHEET NUMBER:
A3-0