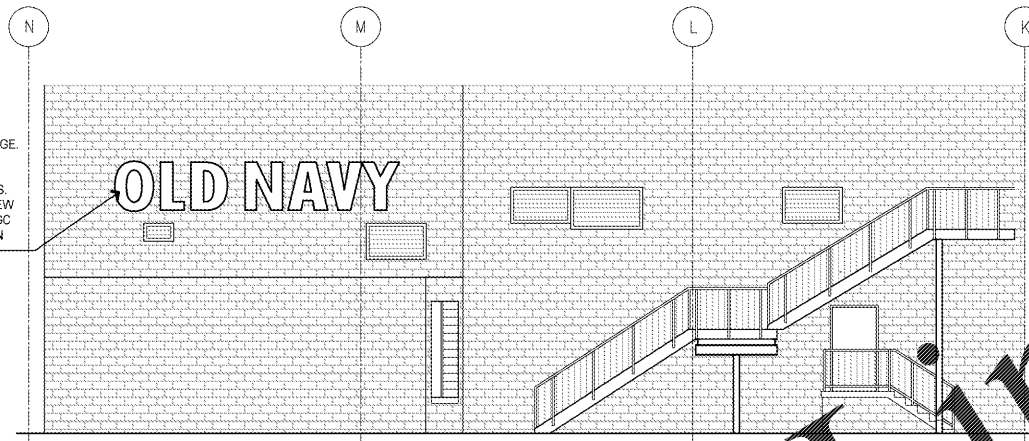


Order Plans

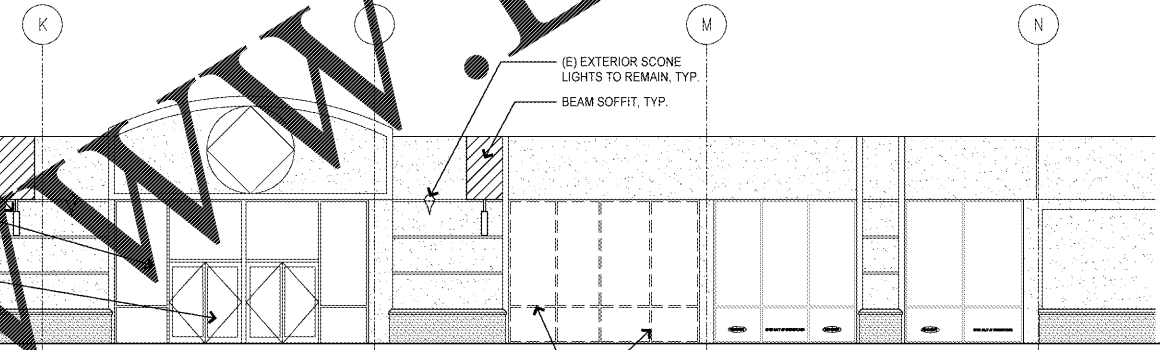
REMOVE AND DISCARD (E) OLDNAVY EXTERIOR SIGNAGE. PATCH AND REPAIR (E) EXTERIOR CONDITIONS TO MATCH ADJACENT FINISHES. MAINTAIN CIRCUITS FOR NEW SIGN IN SAME LOCATION. GC TO COORDINATE WITH SIGN VENDOR.



REAR ELEVATION - DEMOLITION

SCALE: 1/8" = 1'-0" 3

(E) BLADE SIGN(S) TO REMAIN, TYP.
REMOVE AND DISPOSE OF (E) STOREFRONT.
REMOVE AND SALVAGE (E) ENTRY DOORS. (N) INFILLED STOREFRONT TO MATCH ADJACENT SYSTEM.

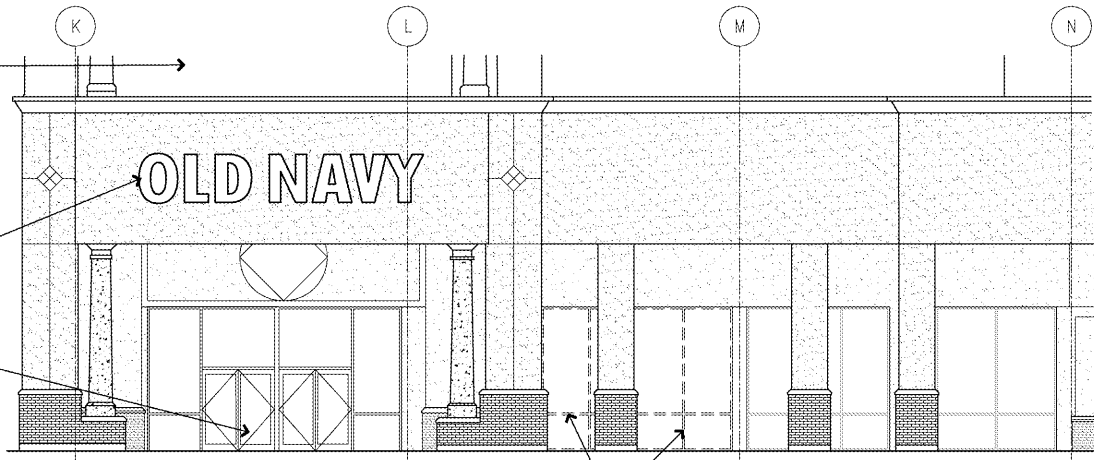


(E) EXTERIOR SCENE LIGHTS TO REMAIN, TYP.
BEAM SOFFIT, TYP.
REMOVE AND DISPOSE OF (E) STOREFRONT, REF. A2-1 FOR RELOCATED ENTRY DOOR

FRONT BREEZEWAY ELEVATION - DEMOLITION

SCALE: 1/8" = 1'-0" 2

(E) WALK WAY ABOVE
REMOVE AND DISCARD (E) OLDNAVY EXTERIOR SIGNAGE. PATCH AND REPAIR (E) EXTERIOR CONDITIONS TO MATCH ADJACENT FINISHES. MAINTAIN CIRCUITS FOR NEW SIGN IN SAME LOCATION. GC TO COORDINATE WITH SIGN VENDOR.
REMOVE AND SALVAGE ENTRY DOORS. (N) STOREFRONT TO MATCH ADJACENT SYSTEM.



REMOVE AND DISPOSE OF (E) STOREFRONT, REF. A2-1 FOR RELOCATED ENTRY DOOR

FRONT ELEVATION - DEMOLITION

SCALE: 1/8" = 1'-0" 1

REMODEL STORE

OLD NAVY

CAP, INC.
STORE DEVELOPMENT
FOLSOM STREET
SAN FRANCISCO, CA 94105

REPS. I.D.: 00000131847
STORE NUMBER: 5724

STORE LOCATION:
BUCKHEAD STATION
1 BUCKHEAD LOOP NE
ATLANTA, GA 30326

DESIGN TYPE: P3
GENERATION: 18012
PROTOTYPE DATE: 08/31/17
OPENING: 2018

CONSULTANT INFO:

PROFESSIONAL STAMP:

ARCHITECT INFO:



ARCHITECT OF RECORD:
BOYD W. RAU
6700 ANTOCH PLAZA
SUITE 300
MEMPHIS, TN 38124
www.brrarch.com
TEL: 913-262-9095
FAX: 913-262-9044

ISSUE TYPE:

BID/PERMIT 01/05/18

REVISIONS:

DRAWN BY: CAR
AVE JOB NUMBER: 65013029

TITLE SHEET:
DEMO EXTERIOR
ELEVATIONS

SHEET NUMBER:

D2-0