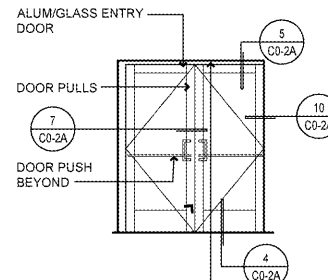


**DOOR TYPES & HARDWARE SCHEDULES - DOORS AND DOOR HARDWARE PROVIDED & INSTALLED BY GC UNLESS OTHERWISE NOTED**

REMODEL STORE

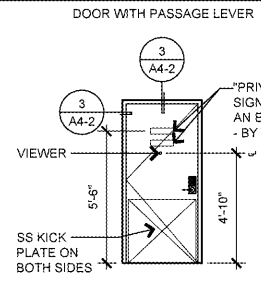
**DOOR TYPE A2 - RELOCATED DOUBLE ENTRY DOORS**



G.C. TO PROVIDE SIGNAGE @ DOOR FRAME NOT LESS THAN 1" HIGH CONTRASTING LETTERS "DOOR TO REMAIN UNLOCKED DURING BUSINESS HOURS"  
REUSE EXISTING HARDWARE REPLACE AS NEEDED  
SEE 1/C0-2A FOR DETAILS

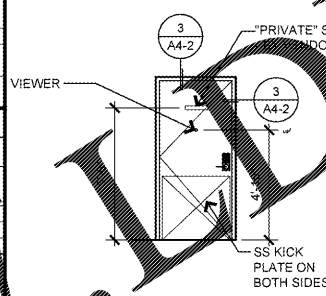
DOOR AND FRAME INFORMATION		DOOR INFORMATION		FRAME INFORMATION				LOCK CORE	FIRE RATING LABEL
NOMINAL SIZE (WxHxD)	MATERIAL	KICK PLATE	MATERIAL	JAMB	HEAD	SILL	LOCK CORE	FIRE RATING LABEL	
PR 3'-0" X 7'-0" X 1-3/4" (V.I.F.)	ALUM.	-	ALUM.	7'-	5'-	4'-	2	-	
<b>COMMENTS:</b> FIELD VERIFY SIZE @ SITE SPECIFIC PROJECTS.									
DOOR HARDWARE INFORMATION									
QTY.	ITEM	DESCRIPTION							
1 SET	LOCKSET	STRAIGHT THROW ROUND BOLT WITH BEST 7-PIN MORTISE CYLINDER 1E7C4. PROVIDE CONSTRUCTION CORES AND TWO CONTROL KEYS. LOCK ON ACTIVE LEAF WITH THUMB TURN ONLY. INACTIVE LEAF TO HAVE DUMMY CYLINDER ON OUTSIDE. INSTALL LOCKSET @ 42" AFF. DEAD LOCK ADAMS-RITE MS-1850							
1 SET	DOOR PULL HANDLE	ROCKWOOD RM3301 - FOR LENGTH SEE DETAIL 1/. TO ALIGN W/GLASS INDOOR X 1 1/4"D. X 3" PROJECTION. CLEAR ANODIZED - 4 POST MOUNTING - PER ROCKWOOD MANUFACTURING DRAWING #RS-04-031.2 CONTACT: RUSS BUNGARD 800-458-2424 (X 129)							
1 SET	DOOR PUSH BARS	ROCKWOOD RM3112 - 31 1/16" L X 1 1/4" D. X 2 1/2" PROJECTION. CLEAR ANODIZED - PER ROCKWOOD MANUFACTURING DRAWING #RS-04-031.2 CONTACT: RUSS BUNGARD 800-458-2424 (X 129)							
2 SETS	CONTINUOUS GEAR HINGES	VISTAWALL TH-49 OR KAWNEER STD. 1/2" X 4"							
2 EA	DUST-PROOF STRIKE	BY DOOR MANUFACTURER US26D AT THRESHOLD, KAWNEER - RICKWOOD 570 W/O PLATE							
1 EA	THRESHOLD	DORMA RTS-88 W/ 105 DEGREE HOLD-OPEN. W/ CLOSER COVER PLATE. 626 FINISH (NOT REQUIRED AT DOOR OPERATED BY H.C. ACCESS OPERATING SYSTEM)							
2 EA	SURFACE MOUNTED CLOSER	SPECIALIZED BUILDERS HARDWARE 149 "THESE DOORS TO REMAIN UNLOCKED DURING BUSINESS HOURS". BW FINISH							
1 EA	SIGN	PROVIDE ONE COMPLETE BESAM "POWER SWING" HANDICAPPED ACCESS DOOR OPERATING SYSTEM AT ONE PAIR OF DOORS. (INCLUDE A 1 3/4" OR 4" OPENER COVERPLATE AS REQD PER CODE) FINISH - CLEAR ANODIZED. PUSH PLATE BESAM PIN-75-02-280. COORDINATE HARDWARE WITH HARDWARE SUPPLIER							
1	DOOR OPERATING SYSTEM	VISTAWALL FB-14 OR KAWNEER EQUAL (RETROFIT (E) W/ BEST CORE COMPATIBLE)							
2 EA	FLUSH BOLTS	VISTAWALL CY-3 OR KAWNEER EQUAL (RETROFIT (E) W/ BEST CORE COMPATIBLE)							
1 EA	THUMB TURN (ACTIVE LEAF)	VISTAWALL CY-3 OR KAWNEER EQUAL (RETROFIT (E) W/ BEST CORE COMPATIBLE)							
1 EA	DUMMY CYLINDER (INACTIVE LEAF)	VISTAWALL CY-4 OR KAWNEER EQUAL (RETROFIT (E) W/ BEST CORE COMPATIBLE)							

**DOOR TYPE H - CORRIDOR / PROCESSING AREA (NOT FOR EMERGENCY EGRESS)**



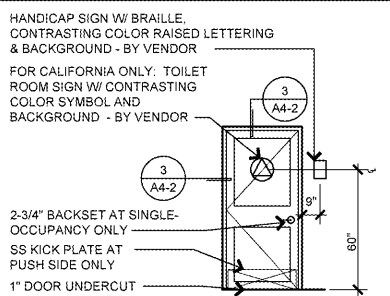
DOOR AND FRAME INFORMATION		DOOR INFORMATION		FRAME INFORMATION				LOCK CORE	FIRE RATING LABEL
NOMINAL SIZE (WxHxD)	MATERIAL	KICK PLATE	MATERIAL	JAMB	HEAD	SILL	LOCK CORE	FIRE RATING LABEL	
4'-0" X 7'-0" X 1-3/4"	S.C.WD.	S STEEL	MTL.	3/A4-2	3/A4-2	-	1	-	
<b>COMMENTS:</b>									
DOOR HARDWARE INFORMATION									
QTY.	ITEM	DESCRIPTION							
1 EA	LOCKSET	TRILOGY - DL 2700 IC 26D FINISH WITH BEST IC 17626							
4 EA	BUTT HINGES	MCKINNEY TA2714 4-1/2" X 4-1/2" 626, or HAGER BB1279 4-1/2" X 4-1/2" 626, or STANLEY FBB179N 4-1/2" X 4-1/2" 626							
1 EA	CLOSER	NORTON 8501 ALUM or STANLEY QDC21FX SNx689							
1 EA	DOOR STOP	DON-JO 1450-626 or TRIMCO 1201 626 or IVES 444-PA26							
2 SETS	SILENCERS	GJ64. GRAY FINISH. 3 PER DOOR LEAF							
2 EA	KICK PLATE	32" H X 34" W X 630. BURNISH EDGES SMOOTH. TYP. 4 SIDES, BY VENDOR							
1 EA	VIEWER	ENTRY SCOPE U-9917. MOUNT @ 4'-10" A.F.F.							
1 EA	PRIVATE & NOT AN EXIT SIGNS	BY VENDOR. SEE 3/A10-1							

**DOOR TYPE J - FITTING ROOM / PROCESSING AREA (NOT FOR EMERGENCY EGRESS)**



DOOR AND FRAME INFORMATION		DOOR INFORMATION		FRAME INFORMATION				LOCK CORE	FIRE RATING LABEL
NOMINAL SIZE (WxHxD)	MATERIAL	KICK PLATE	MATERIAL	JAMB	HEAD	SILL	LOCK CORE	FIRE RATING LABEL	
3'-0" X 7'-0" X 1-3/4"	S.C.WD.	S STEEL	MTL.	3/A4-2	3/A4-2	-	1	-	
<b>COMMENTS:</b>									
DOOR HARDWARE INFORMATION									
QTY.	ITEM	DESCRIPTION							
1 EA	LOCKSET	TRILOGY - DL 2700 IC 26D FINISH WITH BEST IC 17626							
4 EA	BUTT HINGES	MCKINNEY TA2714 4-1/2" X 4-1/2" 626, or HAGER BB1279 4-1/2" X 4-1/2" 626, or STANLEY FBB179N 4-1/2" X 4-1/2" 626							
1 EA	CLOSER	NORTON 8501 ALUM or STANLEY QDC21FX SNx689							
1 EA	DOOR STOP	DON-JO 1450-626 or TRIMCO 1201 626 or IVES 444-PA26							
2 SETS	SILENCERS	GJ64. GRAY FINISH. 3 PER DOOR LEAF							
2 EA	KICK PLATE	32" H X 34" W X 630. BURNISH EDGES SMOOTH. TYP. 4 SIDES, BY VENDOR							
1 EA	VIEWER	ENTRY SCOPE U-9917. MOUNT @ 4'-10" A.F.F.							
1 EA	PRIVATE SIGN	BY VENDOR. SEE 3/A10-1							

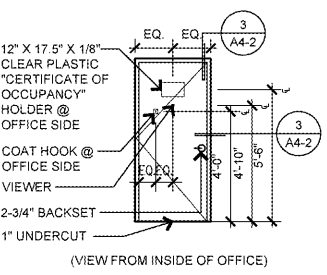
**DOOR TYPE E - TOILET ROOMS (SINGLE OCCUPANCY)**



HANDICAP SIGN W/ BRAILLE CONTRASTING COLOR RAISED LETTERING & BACKGROUND - BY VENDOR  
FOR CALIFORNIA ONLY: TOILET ROOM SIGN W/ CONTRASTING COLOR SYMBOL AND BACKGROUND - BY VENDOR  
2-3/4" BACKSET AT SINGLE-OCCUPANCY ONLY  
SS KICK PLATE AT PUSH SIDE ONLY  
1" DOOR UNDERCUT

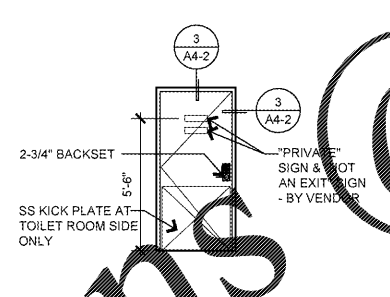
DOOR AND FRAME INFORMATION		DOOR INFORMATION		FRAME INFORMATION				LOCK CORE	FIRE RATING LABEL
NOMINAL SIZE (WxHxD)	MATERIAL	KICK PLATE	MATERIAL	JAMB	HEAD	SILL	LOCK CORE	FIRE RATING LABEL	
3'-0" X 6'-8" X 1-3/4"	S.C.WD.	S STEEL	WD.	3/A4-2	3/A4-2	-	1	-	
<b>COMMENTS:</b> SIMPSON - 2 PANEL #8082 REDI PRIME DOOR.									
DOOR HARDWARE INFORMATION									
QTY.	ITEM	DESCRIPTION							
1 EA	PRIVACY LOCK	BEST 7KC37D15D-S3626, 2-3/4" BACKSET							
3 EA	BUTT HINGES	MCKINNEY TA2714 4-1/2" X 4-1/2" 626, or HAGER BB1279 4-1/2" X 4-1/2" 626, or STANLEY FBB179N 4-1/2" X 4-1/2" 626							
1 EA	CLOSER	NORTON 8501 ALUM or STANLEY QDC21FX SNx689							
1 EA	DOOR STOP	DON-JO 1450-626 or TRIMCO 1201 626 or IVES 444-PA26							
1 EA	HANDICAP SIGN (CALIFORNIA ONLY)	BY VENDOR. SEE 9/A10-1							
1 EA	HANDICAP SIGN	BY VENDOR. SEE 9/A10-1							
1 SET	SILENCERS	GJ64. GRAY FINISH. 3 PER DOOR LEAF							
1 EA	KICK PLATE	32" H X 34" W X 630. BURNISH EDGES SMOOTH. TYP. 4 SIDES, BY VENDOR							
1 EA	SEAL (RATED DOORS ONLY)	PEMCO S88D17							

**DOOR TYPE M - OFFICE**



DOOR AND FRAME INFORMATION		DOOR INFORMATION		FRAME INFORMATION				LOCK CORE	FIRE RATING LABEL
NOMINAL SIZE (WxHxD)	MATERIAL	KICK PLATE	MATERIAL	JAMB	HEAD	SILL	LOCK CORE	FIRE RATING LABEL	
12" X 17.5" X 1/8"	S.C.WD.	-	MTL.	3/A4-2	3/A4-2	-	1	-	
<b>COMMENTS:</b>									
DOOR HARDWARE INFORMATION									
QTY.	ITEM	DESCRIPTION							
1 EA	LOCKSET	BEST 7KC37D15D-S3626, 2 3/4" BACKSET W/ BEST 7-PIN ADAPTER AND INTERCHANGEABLE CONSTRUCTION CORE AND KEY							
3 EA	BUTT HINGES	MCKINNEY TA2714 4-1/2" X 4-1/2" 626, or HAGER BB1279 4-1/2" X 4-1/2" 626, or STANLEY FBB179N 4-1/2" X 4-1/2" 626							
1 EA	CLOSER	NORTON 8501 ALUM or STANLEY QDC21FX SNx689							
1 EA	COAT HOOK	ASI 0745-Z. MOUNT AT 4'-0" A.F.F.							
1 EA	VIEWER	ENTRY SCOPE U-9917. MOUNT @ 4'-10" A.F.F.							
1 SET	SILENCERS	GJ64. GRAY FINISH. 3 PER DOOR LEAF							
1 EA	SEAL (RATED DOORS ONLY)	PEMCO S88D							
1 EA	CLEAR PLASTIC CERTIFICATE HOLDER	12" X 17.5" X 1/8". MOUNT HORIZONTALLY. CENTERLINE @ 5'-6" A.F.F.							
1 EA	DOORSTOP	DON-JO 1450-626 or TRIMCO 1201 626 or IVES 444-PA26							
1 EA	DOORSTOP (SAFE)	IVES-DOOR STOP NO. 407 1/2 W/626 FINISH							

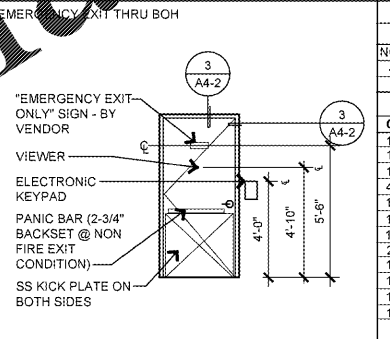
**DOOR TYPE F - JANITOR CLOSET**



2-3/4" BACKSET  
SS KICK PLATE AT TOILET ROOM SIDE ONLY  
"PRIVATE" SIGN & "NOT AN EXIT" SIGN - BY VENDOR

DOOR AND FRAME INFORMATION		DOOR INFORMATION		FRAME INFORMATION				LOCK CORE	FIRE RATING LABEL
NOMINAL SIZE (WxHxD)	MATERIAL	KICK PLATE	MATERIAL	JAMB	HEAD	SILL	LOCK CORE	FIRE RATING LABEL	
3'-0" X 7'-0" X 1-3/4"	S.C.WD.	S STEEL	MTL.	3/A4-2	3/A4-2	-	1	-	
<b>COMMENTS:</b>									
DOOR HARDWARE INFORMATION									
QTY.	ITEM	DESCRIPTION							
1 EA	LOCKSET	TRILOGY - DL 2700IC 26D FINISH WITH BEST IC 17626							
3 EA	BUTT HINGES	MCKINNEY TA2714 4-1/2" X 4-1/2" 626, or HAGER BB1279 4-1/2" X 4-1/2" 626, or STANLEY FBB179N 4-1/2" X 4-1/2" 626							
1 EA	CLOSER	NORTON 8501 ALUM or STANLEY QDC21FX SNx689							
1 SET	DOOR STOP	DON-JO 1450-626 or TRIMCO 1201 626 or IVES 444-PA26							
1 EA	SILENCERS	GJ64. GRAY FINISH. 3 PER DOOR LEAF							
1 EA	SEAL (RATED DOORS ONLY)	PEMCO S88D							
1 EA	KICK PLATE	32" H X 34" W X 630. BURNISH EDGES SMOOTH. TYP. 4 SIDES, BY VENDOR							
1 EA	PRIVATE & NOT AN EXIT SIGNS	BY VENDOR. SEE 3/A10-1							

**DOOR TYPE H2 - EMERGENCY EXIT THROUGH BOH**



"EMERGENCY EXIT ONLY" SIGN - BY VENDOR  
VIEWER  
ELECTRONIC KEYPAD  
PANIC BAR (2-3/4" BACKSET @ NON FIRE EXIT CONDITION)  
SS KICK PLATE ON BOTH SIDES

DOOR AND FRAME INFORMATION		DOOR INFORMATION		FRAME INFORMATION				LOCK CORE	FIRE RATING LABEL
NOMINAL SIZE (WxHxD)	MATERIAL	KICK PLATE	MATERIAL	JAMB	HEAD	SILL	LOCK CORE	FIRE RATING LABEL	
4'-0" X 7'-0" X 1-3/4"	S.C.WD.	S STEEL	MTL.	3/A4-2	3/A4-2	-	1	-	
<b>COMMENTS:</b>									
DOOR HARDWARE INFORMATION									
QTY.	ITEM	DESCRIPTION							
1 EA	PANIC HARDWARE	PRECISION FL2114 X 4914A ALW-3							
1 EA	TRANSFER HINGE	STANLEY CE-FBB179-54 4.5X4 5 626							
1 EA	KEYPAD	CAMDEN CM-120w -V2							
4 EA	HINGES	STANLEY FBB179 4.5X4 5 626							
1 EA	CLOSER	NORTON 8501 ALUM or STANLEY D3551 ALUM							
1 EA	DOOR STOP	DON-JO 1450-626 or TRIMCO 1201 616 or IVES 444-PA26							
1 SET	SILENCERS	GJ64. GRAY FINISH							
2 EA	KICK PLATE	32" H X 34" W X 630. BURNISH EDGES SMOOTH. TYP. 4 SIDES, BY VENDOR							
1 EA	MORTISE CYLINDER	1E74 626							
1 EA	POWER SUPPLY	CAMDEN CX-PS10UL							
1 EA	VIEWER	ENTRY SCOPE U-9917. MOUNT @ 4'-10" A.F.F.							
1 EA	EMERGENCY EXIT ONLY SIGN	BY VENDOR. SEE 9/A10-1							

**DOOR SCHEDULE**

MARK	LOCATION	DOOR TYPE
(1)	ENTRY (RELOCATED)	TYPE A
(2)	ENTRY (RELOCATED)	TYPE A
(3)	SALES / STOCKROOM (EMERGENCY EXIT)	TYPE H2
(4)	CASED OPENING (SEE DETAIL 4 / A4-2)	TYPE C1
(5)	CASED OPENING (SEE DETAIL 4 / A4-2)	TYPE C1
(6)	JANITOR CLOSET	TYPE F
(7)	WOMEN'S TOILET	TYPE E
(8)	MEN'S TOILET	TYPE E
(9)	EMPLOYEE AREA / TOILET ROOM CORRIDOR	TYPE H
(10)	FITTING ROOM / PROCESSING AREA	TYPE J
(11)	OFFICE (REPLACE EXISTING)	TYPE M
(12)	STOCK / PROCESSING AREA EXIT (EXISTING - 3'-6" X 7'-0")	EXISTING
(13)	OVERHEAD LOADING DOOR (EXISTING)	EXISTING

**OLD NAVY**

DEVELOPMENT  
FOLSOM STREET  
FRANCO, CA 94105

REPS. I.D.: 0000131847  
STORE NUMBER: 5724  
BUCKHEAD STATION  
1 BUCKHEAD LOOP NE  
ATLANTA, GA 30326

DESIGN TYPE: P3  
GENERATION: 18012  
PROTOTYPING DATE: 08/31/17  
OPENING: 2018

CONSULTANT INFO.

PROFESSIONAL STAMP:

ARCHITECT INFO:  
**brr**  
ARCHITECT OF RECORD:  
BOYD W. BAU  
6700 ANTIPOCH PLAZA  
SUITE 300  
MERRILL, AS 66204  
www.brrarch.com  
TEL: 913-262-9095  
FAX: 913-262-9044

ISSUE TYPE:  
BID/PERMIT 01/05/18

REVISIONS:

DRAWN BY: CAR  
AVE JOB NUMBER: 65013029

TITLE SHEET:  
DOOR SCHEDULES, TYPES & DOOR HARDWARE

SHEET NUMBER:  
**C0-2**

Order Plans